

**MEXICO OIL CONSERVATION COMMISSION
WELL LOCATION AND ACREAGE DEDICATION PLAT**

Form C-102
Supersedes C-128
Effective 1-1-65

All distances must be from the outer boundaries of the Section

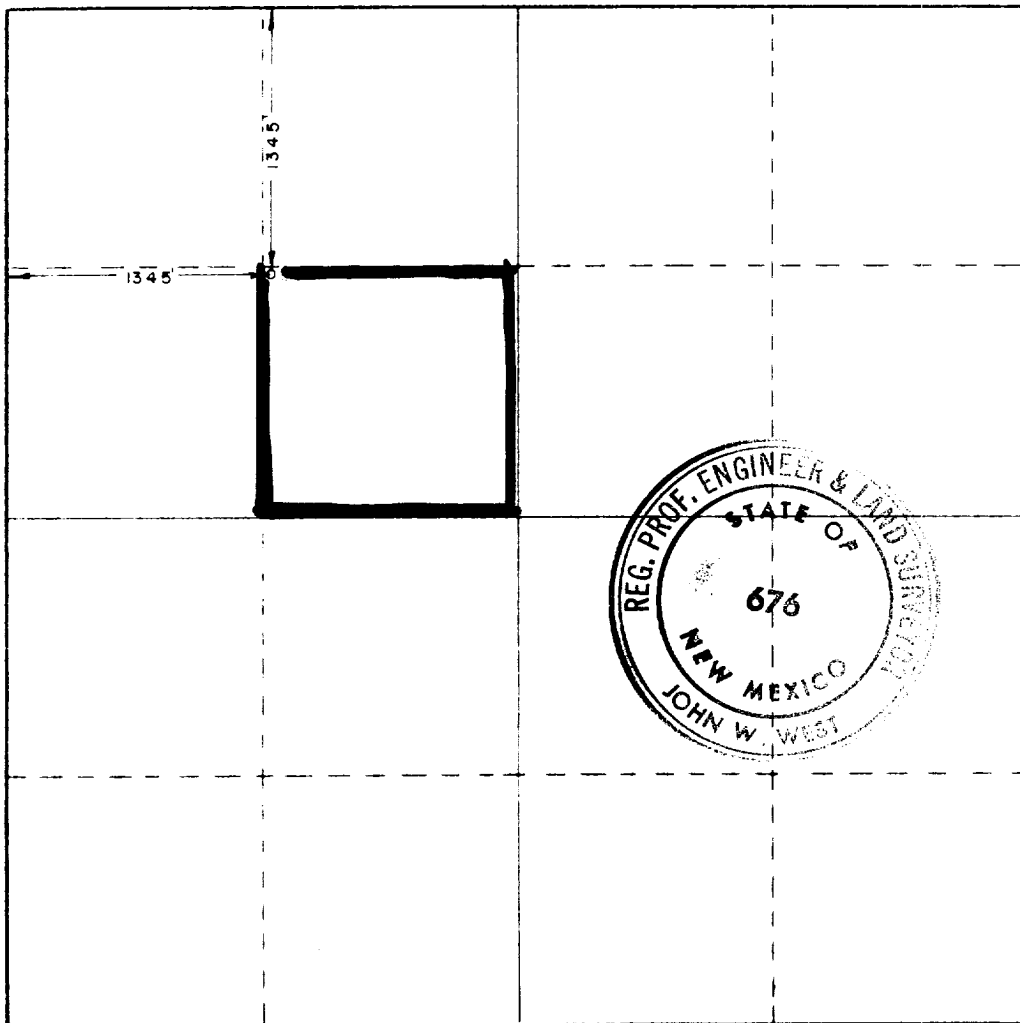
Operator Sun Exploration & Producing Company			Lease " " " " State A A/C 2		Well No. 66
Section Letter F	Section 9	Township 22 South	Range 36 East	County Lea County	
Approximate Location of Well: <div style="display: flex; justify-content: space-between;"> 1345 feet from the North line and 1345 feet from the West line </div>					
Surface Elev. 3565.4	Producing Formation Queen	Pool Evine Seven Rivers Queen South	Dedicated Acreage: 40 Acres		

1. Outline the acreage dedicated to the subject well by colored pencil or hachure marks on the plat below
2. If more than one lease is dedicated to the well, outline each and identify the ownership thereof (both as to working interest and royalty)
3. If more than one lease of different ownership is dedicated to the well, have the interests of all owners been consolidated by communitization, unitization, force-pooling, etc?

☐ Yes ☐ No If answer is "yes," type of consolidation _____

If answer is "no," list the owners and tract descriptions which have actually been consolidated. (Use reverse side of this form if necessary.) _____

No allowable will be assigned to the well until all interests have been consolidated by communitization, unitization, forced-pooling, or otherwise) or until a non-standard unit, eliminating such interests, has been approved by the Commission.



CERTIFICATION

I hereby certify that the information contained herein is true and complete to the best of my knowledge and belief.

Dee Ann Kemp

Dee Ann Kemp

Senior Acct. Asst.

Sun Exploration & Production Co.

7-12-83

I hereby certify that the well location shown on this plat was plotted from field notes of actual surveys made by me or under my supervision, and that the same is true and correct to the best of my knowledge and belief.

Date Surveyed

June 23 & 24, 1983

Registered Professional Engineer and/or Land Surveyor

John W. West

Certificate No. **JOHN W. WEST, 676**
RONALD J. EIDSON, 3239



RECEIVED

JUL 15 1983

CCO
HOBBS OFFICE

RECEIVED
JUL 15 1983
HOBBS OFFICE