

Exxon Lse. No. \_\_\_\_\_ NE MEXICO OIL CONSERVATION COMMISSION  
State Lse. No. \_\_\_\_\_ WELL LOCATION AND ACREAGE DEDICATION AT  
Federal Lse. No. \_\_\_\_\_ All distances must be from the outer boundaries of the Section.

Form C-102  
Supersedes C-128  
Effective 1-1-65

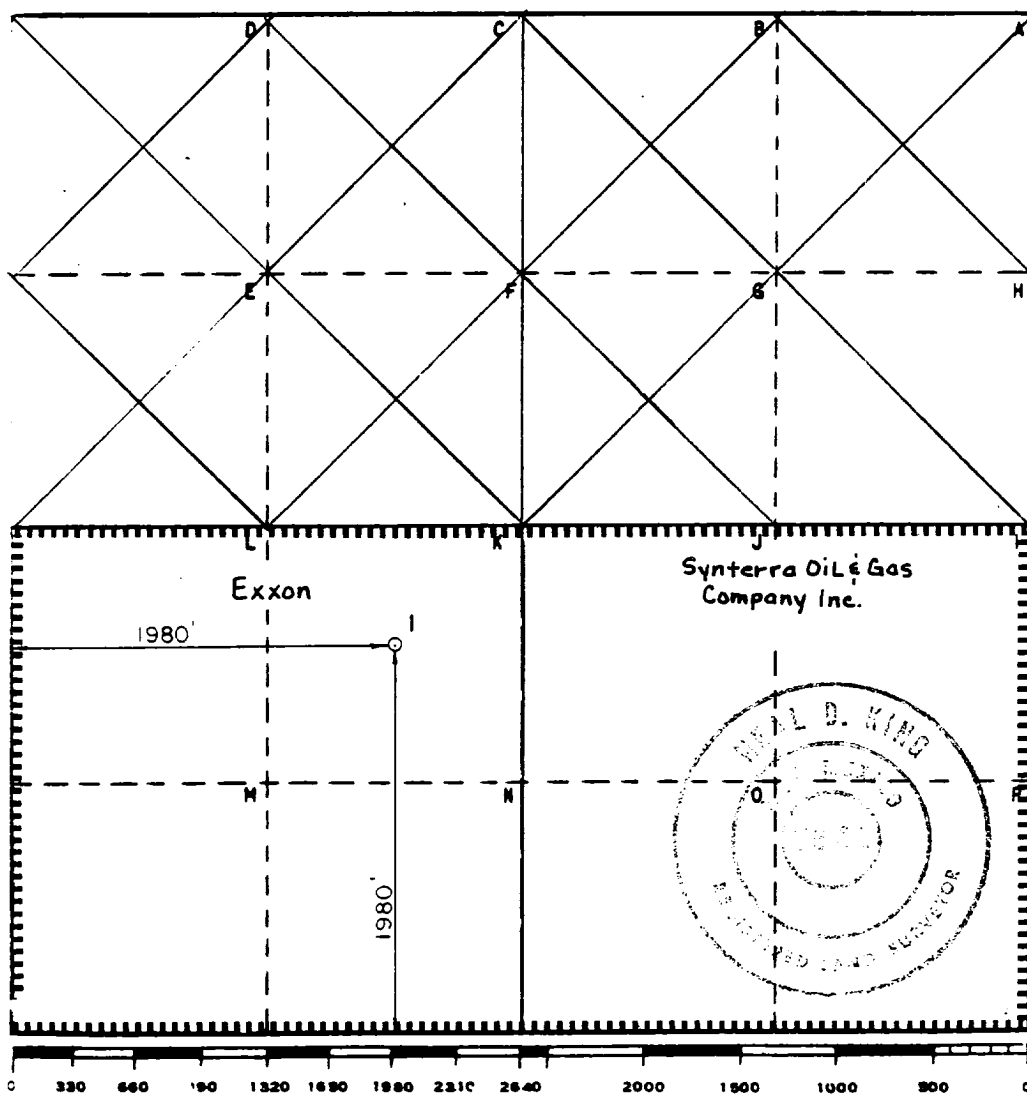
|  |                               |                                      |                                 |               |
|--|-------------------------------|--------------------------------------|---------------------------------|---------------|
| Operator<br>Exxon Corporation  |                               | Lease<br>E. Grama Ridge State Comm.  |                                 | Well No.<br>1 |
| Unit Letter<br>K   | Section<br>11                 | Township<br>22 South                 | Range<br>34 East                | County<br>Lea |
| Actual Footage Location of Well:<br>1980 feet from the South line and 1980 feet from the West line |                               |                                      |                                 |               |
| Ground Level Elev.<br>3540.0   | Producing Formation<br>Morrow | Pool<br>Grama Ridge, East-Morrow Gas | Dedicated Acreage:<br>320 Acres |               |

1. Outline the acreage dedicated to the subject well by colored pencil or hachure marks on the plat below.
2. If more than one lease is dedicated to the well, outline each and identify the ownership thereof (both as to working interest and royalty).
3. If more than one lease of different ownership is dedicated to the well, have the interests of all owners been consolidated by communitization, unitization, force-pooling, etc?

☐ Yes ☒ No If answer is "yes," type of consolidation Pending

If answer is "no," list the owners and tract descriptions which have actually been consolidated. (Use reverse side of this form if necessary.) Synterra

No allowable will be assigned to the well until all interests have been consolidated (by communitization, unitization, forced-pooling, or otherwise) or until a non-standard unit, eliminating such interests, has been approved by the Commission.



#### CERTIFICATION

I hereby certify that the information contained herein is true and complete to the best of my knowledge and belief.

Name Melba Knippling  
Position UNIT HEAD  
Company Exxon Corporation  
Box 1600 Midland, Texas  
Date 3-9-84

I hereby certify that the well location shown on this plat was plotted from field notes of actual surveys made by me or under my supervision, and that the same is true and correct to the best of my knowledge and belief.

Date Surveyed 2/20/84  
Registered Professional Engineer and/or Land Surveyor  
Neal D. King  
Certificate No. 6541 N. M.

RECEIVED  
MAR 12 1984  
O.C.D.  
HOEBS OFFICE

BLOWOUT PREVENTER SPECIFICATION  
EQUIPMENT DESCRIPTION

TYPE II-B

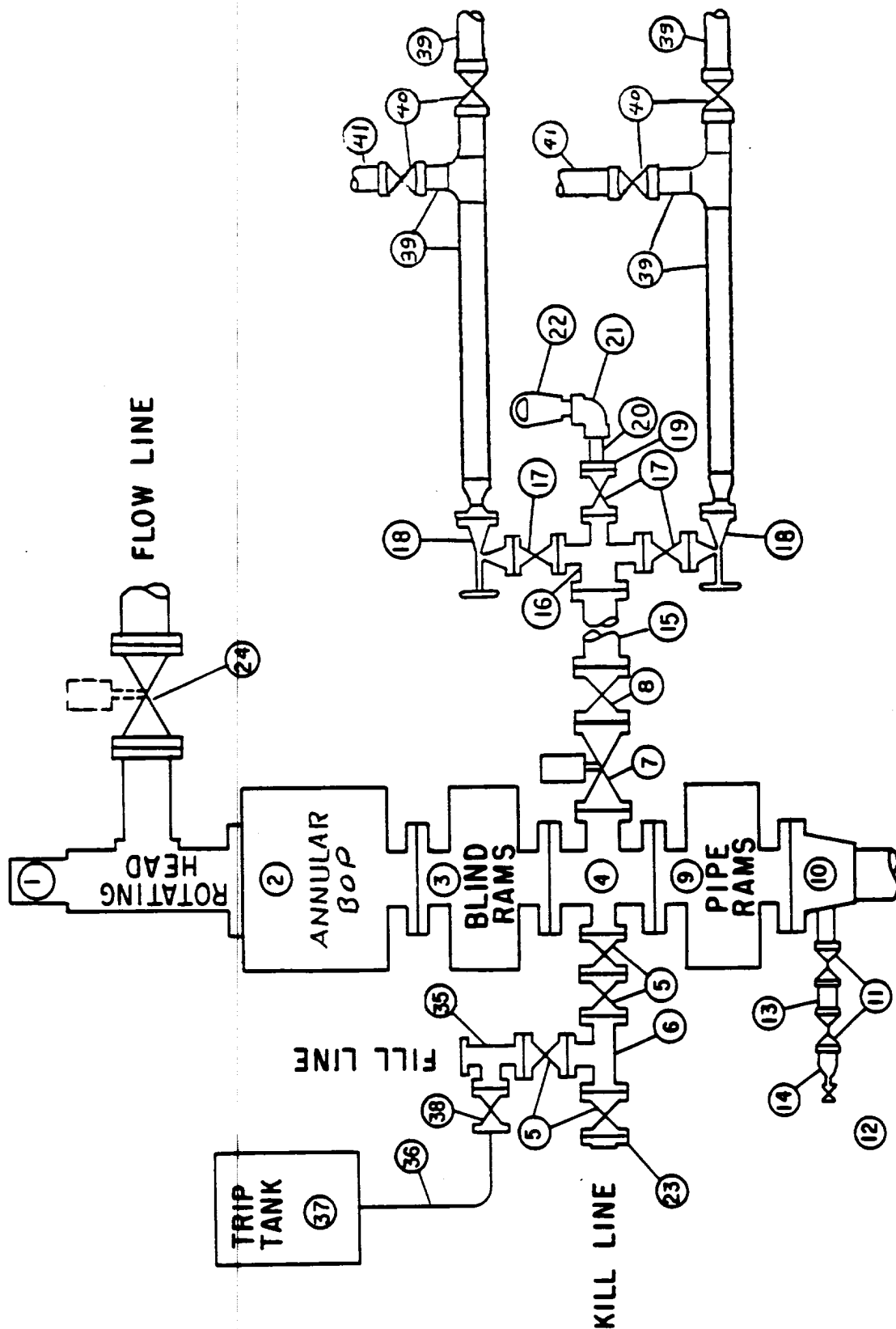
All equipment should be at least 3000 psi WP or higher unless otherwise specified.

1. Rotating BOP.
2. Hydril or Shaffer bag type preventer.
3. Ram type pressure operated blowout preventer with blind rams.
4. Flanged spool with one 4-inch and one 2-inch (minimum) outlet.
5. 2-inch (minimum) flanged plug or gate valve.
6. 2-inch by 2-inch by 2-inch (minimum) flanged tee.
7. 4-inch pressure operated gate valve.
8. 4-inch flanged gate or plug valve.
9. Ram type pressure operated blowout preventer with pipe rams.
10. Flanged type casing head with one side outlet (furnished by Exxon).
11. 2-inch threaded (or flanged) plug or gate valve (furnished by Exxon).  
Flanged on 5000# WP, threaded on 3000# WP or less.
12. Needle valve (furnished by Exxon).
13. 2-inch nipple (furnished by Exxon).
14. Tapped bull plug (furnished by Exxon).
15. 4-inch flanged spacer spool.
16. 4-inch by 2-inch by 2-inch by 2-inch flanged cross.
17. 2-inch flanged plug or gate valve.
18. 2-inch flanged adjustable choke.
19. 2-inch threaded flange.
20. 2-inch XXH nipple.
21. 2-inch forged steel 90° Ell.
22. Cameron (or equal.) threaded pressure gage.
23. Threaded flange.
24. 6-inch manual or pressure operated gate valve.
35. 2-inch flanged tee.
36. 3-inch (minimum) hose. (Furnished by Exxon).
37. Trip tank. (Furnished by Exxon).
38. 2-inch flanged plug or gate valve.
39. 2-1/2-inch pipe, 300' to pit, anchored.
40. 2-1/2-inch SE valve.
41. 2-1/2-inch line to steel pit or separator.

NOTES:

1. Items 3, 4 and 9 may be replaced with double ram type preventer with side outlets between the rams.
2. The two valves next to the stack on the fill and kill line to be closed unless drill string is being pulled.
3. Kill line is for emergency use only. This connection shall not be used for filling.
4. Replacement pipe rams and blind rams shall be on location at all times..
5. Only type U, LWS and QRC ram type preventers with secondary seals are acceptable for 5000 psi WP and higher BOP stacks.
6. Type E ram-type BOP's with factory modified side outlets may be used on 3000 psi and lower WP BOP stacks.

MIDLAND DRILLING ORGANIZATION  
**BLOWOUT PREVENTER SPECIFICATION**  
 TYPE II -B



RECEIVED  
 MAR 12 1984  
 O.C.D.  
 FIELD OFFICE