

DISTRICT I  
P.O. Box 1980, Hobbs, NM 88241-1980  
DISTRICT II  
P.O. Box Drawer DD, Artesia, NM 88211-0719  
DISTRICT III  
1000 Rio Brazos Rd., Aztec, NM 87410  
DISTRICT IV  
P.O. Box 2088, Santa Fe, NM 87504-2088

State of New Mexico  
Energy, Minerals and Natural Resources Departm.

Form C-10  
Revised February 10, 1999  
Instructions on back  
Submit to Appropriate District Office  
State Lease - 6 Copie  
Fee Lease - 5 Copie  
☐ AMENDED REPORT

OIL CONSERVATION DIVISION

P.O. Box 2088  
Santa Fe, New Mexico 87504-2088

APPLICATION FOR PERMIT TO DRILL, RE-ENTER, DEEPEN, PLUGBACK, OR ADD A ZONE

<sup>1</sup> Operator Name and Address TEXACO EXPLORATION & PRODUCTION INC. 205 E. Bender, HOBBS, NM 88240		<sup>2</sup> OGRID Number 022351
<sup>4</sup> Property Code 011131	<sup>5</sup> Property Name WEIR, C. H. -A-	<sup>3</sup> API Number 30-025-28849
		<sup>6</sup> Well No. 15

<sup>7</sup> Surface Location									
UI or lot no	Section	Township	Range	Lot.Idn	Feet From The	North/South Line	Feet From The	East/West Line	County
H	12	20S	37E		1980	NORTH	988	EAST	LEA

<sup>8</sup> Proposed Bottom Hole Location If Different From Surface									
UI or lot no	Section	Township	Range	Lot.Idn	Feet From The	North/South Line	Feet From The	East/West Line	County
<sup>9</sup> Proposed Pool 1 SKAGGS DRINKARD/WEIR BLINEBRY DHC					<sup>10</sup> Proposed Pool 2				

<sup>11</sup> Work Type Code P	<sup>12</sup> WellType Code O	<sup>13</sup> Rotary or C.T.	<sup>14</sup> Lease Type Code P	<sup>15</sup> Ground Level Elevation 3575' KB
<sup>16</sup> Multiple No	<sup>17</sup> Proposed Depth 6575'	<sup>18</sup> Formation	<sup>19</sup> Contractor	<sup>20</sup> Spud Date 7/15/00

<sup>21</sup> Proposed Casing and Cement Program					
SIZE OF HOLE	SIZE OF CASING	WEIGHT PER FOOT	SETTING DEPTH	SACKS OF CEMENT	EST. TOP
26"	20"	94# H-40	40'	READY MIX	CIRC.
17.5"	13 3/8"	54.5# K-55	1453'	1400 SX	CIRC.
12.25"	8 5/8"	24# K-55	4000'	2200 SX	CIRC.
		32# K-55			
7 7/8"	5 1/2"	15.5# K-55	7000'	1150 SX	CIRC.

<sup>22</sup> Describe the proposed program. If this application is to DEEPEN or PLUG BACK give the data on the present productive zone and proposed new productive zone. Describe the blowout prevention program, if any. Use additional sheets if necessary.

TEXACO INTENDS TO COMMINGLE THE SKAGGS DRINKARD & WEIR BLINEBRY FORMATIONS. THE INTENDED PROCEDURE IS AS FOLLOWS:

1. MIRU PU. TOH W/RDS & PMP. NUBOP. TOH W/TBG.
2. PU & RIH W/4 3/4" BIT ON 2 3/8" WS. DRILL OUT CIBP @ 6585'. PUSH CIBP TO BTM.
3. CIRC HLE CLN. TOH W/TBG & BIT. PU & TIH W/SONIC HAMMER TOOL.
4. ACIDIZE DRINKARD PERFS 6634-6873 & BLINEBRY PERFS 5726-5942 W/3000 GALS 15% NEFE W/SONIC HAMMER TOOL.
5. CIRC HLE CLN. TIH W/MUD ANCHOR, SN, & TBG STRING.
6. SET BTM OF MA BELOW DRINKARD PERFS & TBG ANCHOR ABOVE DRINKARD PERFS.
7. TIH W/RDS & PMP.

{ORDER #R-11363}

<sup>23</sup> I hereby certify that the rules and regulations of the Oil Conservation Division have been complied with and that the information given above is true and complete to the best of my knowledge and belief.

Signature

*J. Denise Leake*

Printed Name J. Denise Leake

Title Engineering Assistant

Date 6/22/00

Telephone 397-0405

OIL CONSERVATION DIVISION

Approved By:

*WILLIAM*  
SUPERVISOR

Title:

Approval Date:

Expiration Date:

Conditions of Approval:

Attached Permit Expires 1 Year From Approval

Date Unless Drilling Underway

Plug-Back

# C.H. WEIR "A" #15

1980' FNL, 988' FEL  
SEC 12, TWN 20 S, RANGE 37 E  
LEA COUNTY, NEW MEXICO  
FRSID # 3002528849

UPDATED 6/7/00

## CURRENT

ELEVATION : 3575 KB

COMPLETION DATE : 10-24-84

\*\*\*\* DRINKARD

COMP INTRVL: 6634, 39, 41, 47, 50, 63, 70, 76,  
78, 82, 85, 90, 93, 97, 99, 6701, 06, 09, 13, 15, 20,  
23, 28, 32, 38, 45, 47, 6810, 17, 26, 32, 38, 43, 49,  
58, 62, 69 & 73

TRT: A/3K 15% NEFE 6810-73. A/6K 15% NEFE  
6634-6747

IP: 165 BOPD 260 MCFD 71 BWPD  
(FLOW) 37.2 API

\*\*\*\*

9-21-87 A/2K 15% NEFE. F/84K 40# GEL/180K  
# 20/40 SD. IP: 85 BO 37 BW 535 MCFD (FLOW)  
6-18-91 A/5K 15% NEFE & PUT ON PUMP.  
IP: 58 BO 43 BW 400 MCFd (FLOW)

\*\*\*\* WEIR BLINEBERRY EAST (8-02-97)

COMP INTRVL: 5726 - '36, 5826 - '32, '34 - '42,  
'54 - '62, 5917 - '23 & 5934 - '42

TRT: A/5K 15% NEFE. F/35# GEL/95.5K #  
20/40 SD & 56K # RC SD

0 - 1453' CEMENT 1400 sxs - Circ.  
0 - 1453', 17.5" OD HOLE

13 3/8", 54#, K-55 SURF CASING  
SET @ 1453'

0 - 4000' CEMENT 2200 sxs - Circ.  
1453 - 4000', 12.25" OD HOLE

2 7/8" SEATING NIPPLE  
(ID = 2.25")

8 5/8", 32.00#, J-55, INT CASING  
SET @ 4000'

155-3/4" & 84-7/8" GRD D RODS

TUBING ANCHOR @ 5663'

SEAT NIPPLE @ 6076'

5726 - 5942' PERFS (BLIN)

194 JTS. 2 3/8" TBG, EOT @ 6104'

6634 - 6873' PERFS (DRKD)

0 - 7000' CEMENT 1150 sxs - Circ.  
4000 - 7000', 7.875" OD HOLE

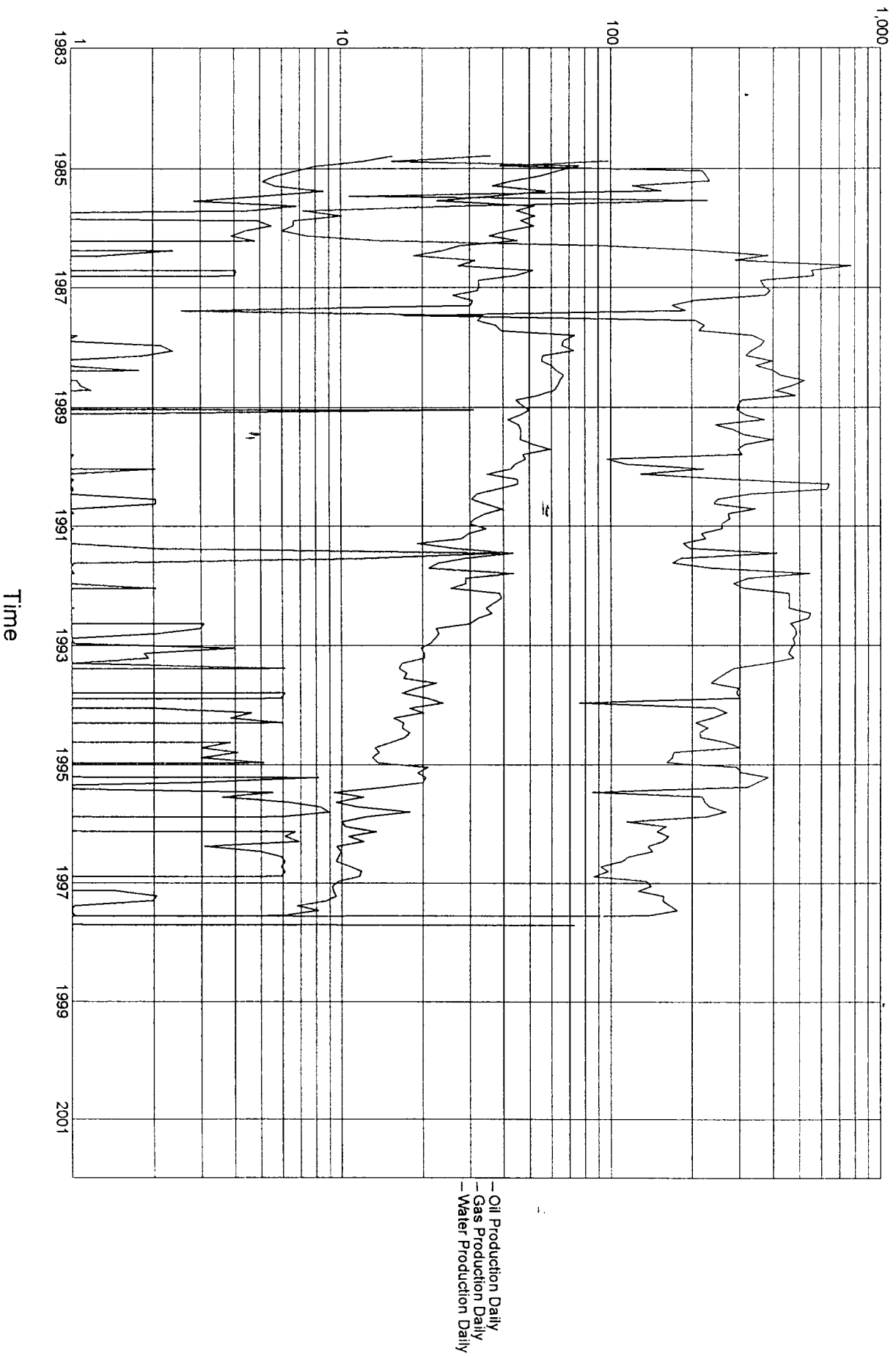
CIBP SET @ 6585'

5 1/2", 15.5#, J-55 CASING  
SET @ 7,000'

WELL TD  
7000'

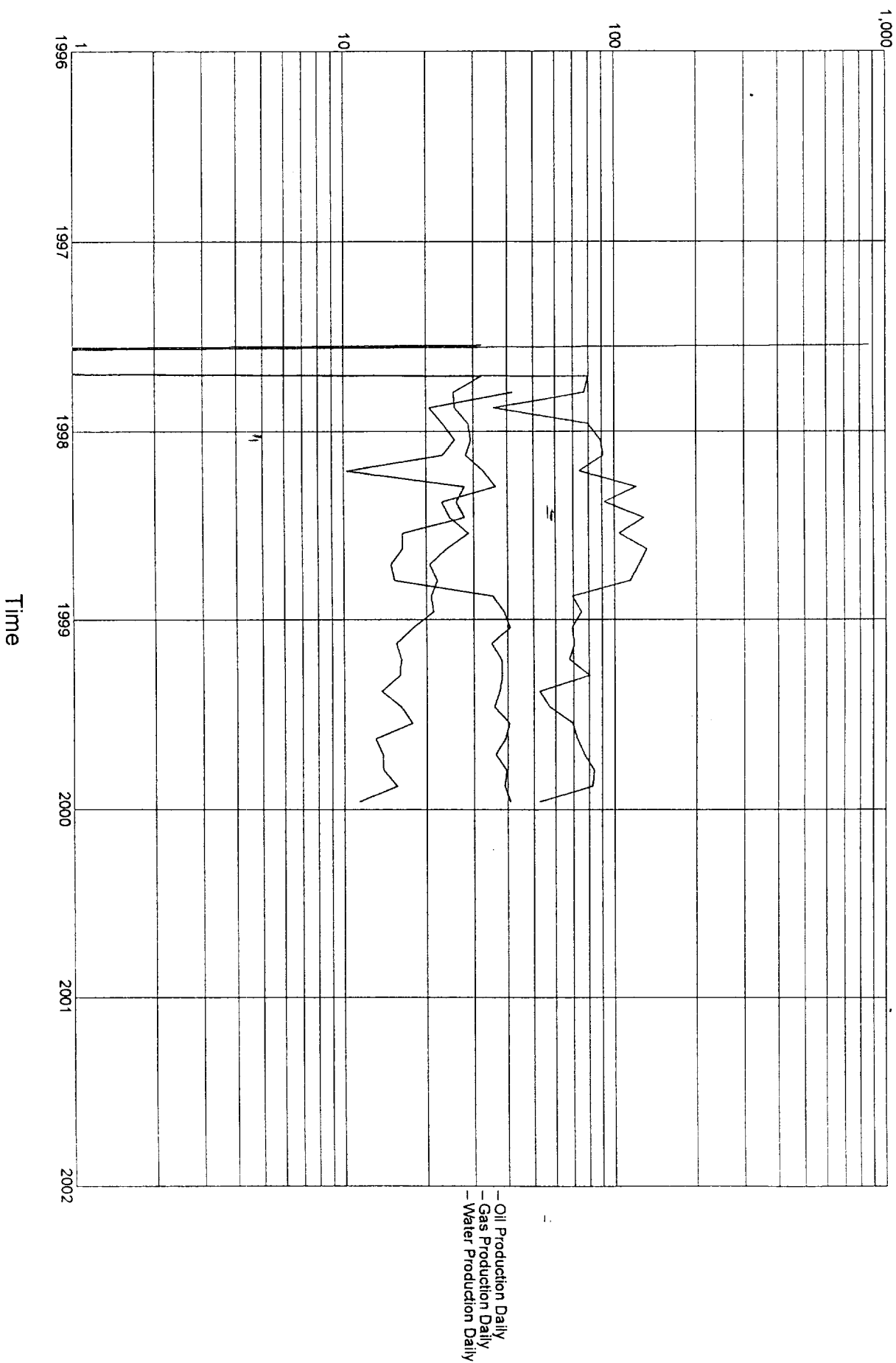
Lease Name: C H WEIR A  
County, State: LEA, NM  
Operator: TEXACO EXPLORATION & PRODUCTION INC  
Field: SKAGGS  
Reservoir: DRINKARD  
Location: S20 E37 0

## C H WEIR A - SKAGGS



Lease Name: C H WEIR A  
County, State: LEA, NM  
Operator: TEXACO EXPLORATION & PRODUCTION INC  
Field: WEIR EAST  
Reservoir: BLINEBRY  
Location: S20 E37 0

## C H WEIR A - WEIR EAST



## DISTRICT I

P.O. Box 1980, Hobbs, NM 88241-1980

## DISTRICT II

P.O. Box Drawer DD, Artesia, NM 88211-0719

## DISTRICT III

1000 Rio Brazos Rd., Aztec, NM 87410

## DISTRICT IV

P.O. Box 2088, Santa Fe, NM 87504-2088

State of New Mexico  
Energy, Minerals and Natural Resources Department

## OIL CONSERVATION DIVISION

P.O. Box 2088  
Santa Fe, New Mexico 87504-2088

Form C-10

Revised February 10, 1999

Instructions on back

Submit to Appropriate District Office

State Lease - 4 Copies

Fee Lease - 3 Copies

☐ AMENDED REPORT

## WELL LOCATION AND ACREAGE DEDICATION PLAT

<sup>1</sup> API Number 30-025-28849	<sup>2</sup> Pool Code 63800	<sup>3</sup> Pool Name WEIR BLINEBRY EAST
<sup>4</sup> Property Code 011131	<sup>5</sup> Property Name WEIR, C. H. -A-	<sup>6</sup> Well No. 15
<sup>7</sup> OGRID Number 022351	<sup>8</sup> Operator Name TEXACO EXPLORATION & PRODUCTION INC.	<sup>9</sup> Elevation 3575' KB

<sup>10</sup> Surface Location

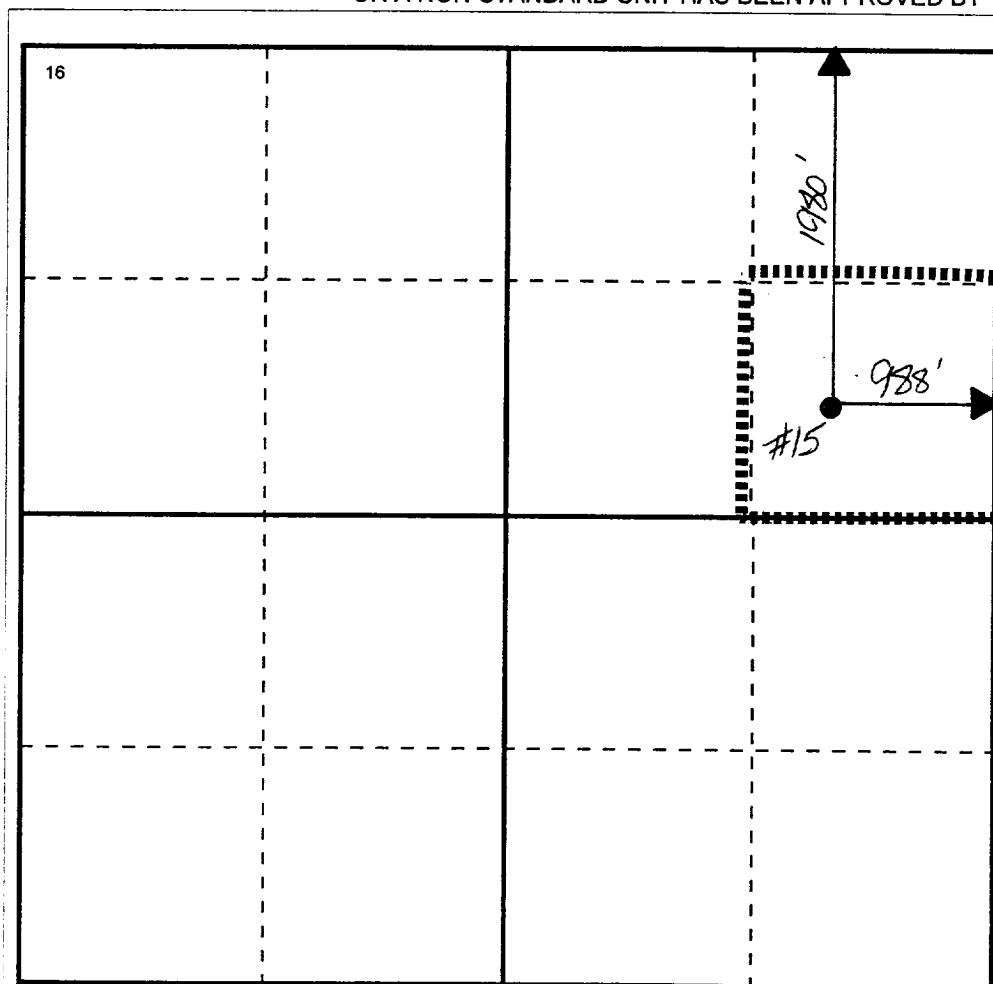
UI or lot no	Section	Township	Range	Lot.Idn	Feet From The	North/South Line	Feet From The	East/West Line	County
H	12	20S	37E		1980	NORTH	988	EAST	LEA

<sup>11</sup> Bottom Hole Location If Different From Surface

UI or lot no	Section	Township	Range	Lot.Idn	Feet From The	North/South Line	Feet From The	East/West Line	County

<sup>12</sup> Dedicated Acre 40	<sup>13</sup> Joint or Infill No	<sup>14</sup> Consolidation Code	<sup>15</sup> Order No.
------------------------------------	-------------------------------------	----------------------------------	-------------------------

NO ALLOWABLE WILL BE ASSIGNED TO THIS COMPLETION UNTIL ALL INTERESTS HAVE BEEN CONSOLIDATED  
OR A NON-STANDARD UNIT HAS BEEN APPROVED BY THE DIVISION

<sup>17</sup> OPERATOR CERTIFICATION

I hereby certify that the information  
contained herein is true and complete to the  
best of my knowledge and belief

Signature

*J. Denise Leake*

Printed Name

J. Denise Leake

Position

Engineering Assistant

Date

6/22/00

<sup>18</sup> SURVEYOR CERTIFICATION

I hereby certify that the well location shown  
on this plat was plotted from field notes of  
actual surveys made by me or under my  
supervision, and that the same is true and  
correct to the best of my knowledge and  
belief.

Date Surveyed

Signature & Seal of  
Professional Surveyor

Certificate No.

0 330 660 990 132 165 1980 2310 2640 2000 1500 1000 500 0

## DISTRICT I

P.O. Box 1980, Hobbs, NM 88241-1980

## DISTRICT II

P.O. Box Drawer DD, Artesia, NM 88211-0719

## DISTRICT III

1000 Rio Brazos Rd., Aztec, NM 87410

## DISTRICT IV

P.O. Box 2088, Santa Fe, NM 87504-2088

## State of New Mexico

Energy, Minerals and Natural Resources Department

Form C-10

Revised February 10, 1999

Instructions on back

Submit to Appropriate District Office

State Lease - 4 Copies

Fee Lease - 3 Copies

☐ AMENDED REPORT

## OIL CONSERVATION DIVISION

P.O. Box 2088

Santa Fe, New Mexico 87504-2088

## WELL LOCATION AND ACREAGE DEDICATION PLAT

<sup>1</sup> API Number 30-025-28849	<sup>2</sup> Pool Code 57000	<sup>3</sup> Pool Name SKAGGS DRINKARD
<sup>4</sup> Property Code 011131	<sup>5</sup> Property Name WEIR, C. H. -A-	<sup>6</sup> Well No. 15
<sup>7</sup> OGRID Number 022351	<sup>8</sup> Operator Name TEXACO EXPLORATION & PRODUCTION INC.	<sup>9</sup> Elevation 3575' KB

<sup>10</sup> Surface Location

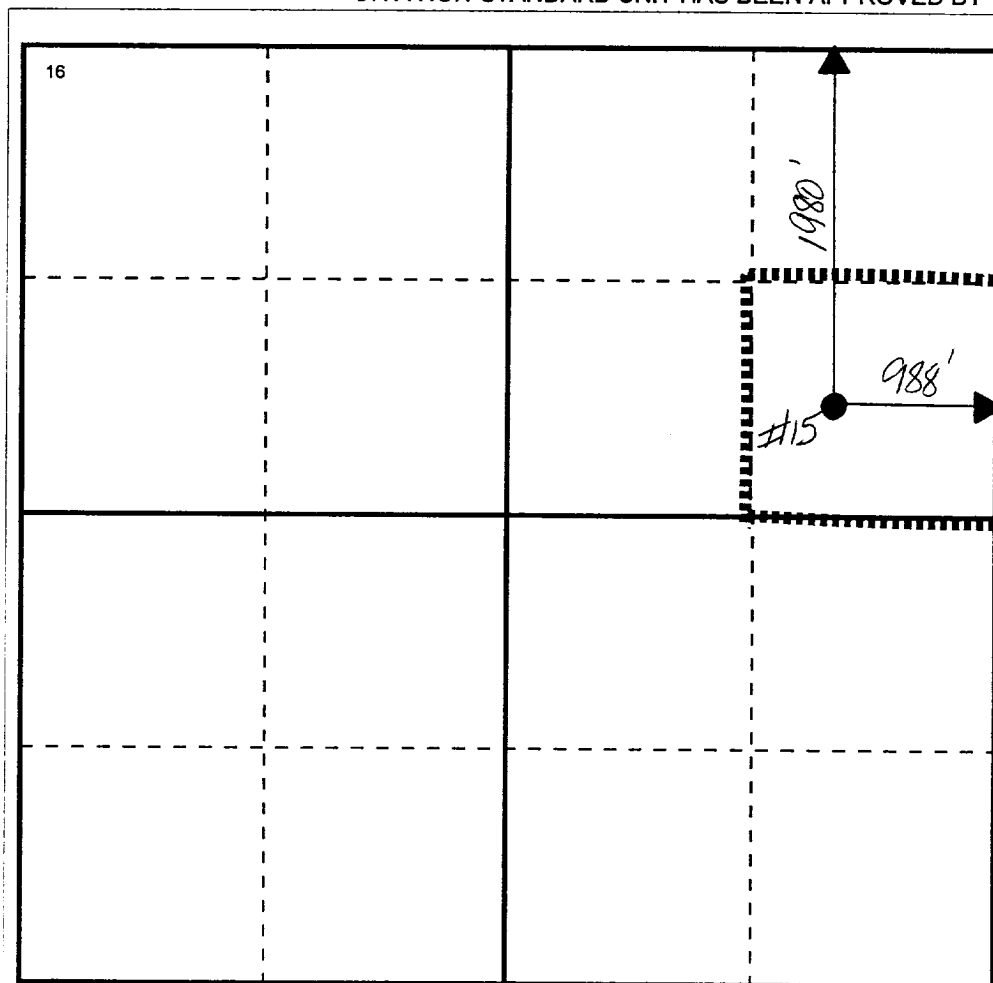
UI or lot no	Section	Township	Range	Lot.Idn	Feet From The	North/South Line	Feet From The	East/West Line	County
H	12	20S	37E		1980	NORTH	988	EAST	LEA

<sup>11</sup> Bottom Hole Location If Different From Surface

UI or lot no	Section	Township	Range	Lot.Idn	Feet From The	North/South Line	Feet From The	East/West Line	County

<sup>12</sup> Dedicated Acre 40	<sup>13</sup> Joint or Infill No	<sup>14</sup> Consolidation Code	<sup>15</sup> Order No.
------------------------------------	-------------------------------------	----------------------------------	-------------------------

NO ALLOWABLE WILL BE ASSIGNED TO THIS COMPLETION UNTIL ALL INTERESTS HAVE BEEN CONSOLIDATED  
OR A NON-STANDARD UNIT HAS BEEN APPROVED BY THE DIVISION

<sup>17</sup> OPERATOR CERTIFICATION

I hereby certify that the information  
contained herein is true and complete to the  
best of my knowledge and belief

Signature

Printed Name

J. Denise Leake

Position

Engineering Assistant

Date

6/22/00

<sup>18</sup> SURVEYOR CERTIFICATION

I hereby certify that the well location shown  
on this plat was plotted from field notes of  
actual surveys made by me or under my  
supervision, and that the same is true and  
correct to the best of my knowledge and  
belief.

Date Surveyed

Signature & Seal of  
Professional Surveyor

Certificate No.

