

P. O. BOX 2088
SANTA FE, NEW MEXICO 87501

NO. OF COPIES RECEIVED	
DISTRIBUTION	
SANTA FE	
FILE	
U.S.G.S.	
LAND OFFICE	
OPERATOR	

5A. Indicate Type of Lease
STATE ☐ FEDERAL ☒

5. State Oil & Gas Lease No.

APPLICATION FOR PERMIT TO DRILL, DEEPEN, OR PLUG BACK

1a. Type of Work

DRILL ☒DEEPEN ☐PLUG BACK ☐

b. Type of Well

OIL WELL ☒GAS WELL ☐

OTHER

SINGLE ZONE ☒MULTIPLE ZONE ☐

2. Name of Operator

Texaco Inc.

3. Address of Operator

P. O. Box 3109 Midland, Texas 79702

4. Location of Well

UNIT LETTER H

LOCATED 1980

FEET FROM THE North

LINE

AND 988

FEET FROM THE East

LINE OF SEC. 12

TWP. 20-S

RGE. 37-E

NMPM

7. Unit Agreement Name

8. Farm or Lease Name

C. H. Weir "A"

9. Well No.

15

10. Field and Pool, or Wildcat

Skaggs Drinkard

12. County

Lea

19. Proposed Depth

7,000'

19A. Formation

Drinkard

20. Rotary or C.T.

Rotary

21. Elevations (show whether DF, RT, etc.)

3559' GR

21A. Kind & Status Plug. Bond

-

21B. Drilling Contractor

-

22. Approx. Date Work will start

September 1, 1984

23.

PROPOSED CASING AND CEMENT PROGRAM

SIZE OF HOLE	SIZE OF CASING	WEIGHT PER FOOT	SETTING DEPTH	SACKS OF CEMENT	EST. TOP
26"	20"	94#, H-40	40'	Ready Mix	Circulate
17 1/2"	13 3/8"	54.5#, K-55	1450'	1400	Circulate
12 1/4"	8 5/8"	24#, K-55	4000'	2700	Circulate
		32#, K-55			
7 7/8"	5 1/2"	15.5#, K-55	7000'	1100	Circulate

CEMENT PROGRAM

1. CONDUCTOR CASING: Cement with Ready Mix.

2. SURFACE CASING: 1200 sxs Class "H" w/4% gel 2% CaCl₂ 1/4# flocele (14.1 ppg, 1.55 ft³/sx) followed by 200 sxs Class "H" w/2% CaCl₂ (15.6 ppg, 1.18 ft³/sx).3. INTERMEDIATE CASING: 1st Stage: 2000 sxs Light Weight w/15# salt and 1/4# flocele (12.7 ppg, 2.10 ft³/sx) followed by 200 sxs Class "H" w/2% CaCl₂ (15.6 ppg, 1.18 ft³/sx). DV Tool 40' above ECP.
2nd Stage: 500 sxs Light Weight (12.4 ppg, 2.00 ft³/sx).4. PRODUCTION CASING: 1st Stage: 400 sxs Class "H" w/1/4# flocele (15.6 ppg, 1.18 ft³/sx). DV Tool @ top of Glorieta.2nd Stage: 700 sxs Light Weight w/1/4# flocele (12.4 ppg, 2.00 ft³/sx).

IN ABOVE SPACE DESCRIBE PROPOSED PROGRAM; IF PROPOSAL IS TO DEEPEN OR PLUG BACK, GIVE DATA ON PRESENT PRODUCTIVE ZONE AND PROPOSED NEW PRODUCTIVE ZONE. GIVE BLOWOUT PREVENTER PROGRAM, IF ANY.

I hereby certify that the information above is true and complete to the best of my knowledge and belief.

Signed Russell E. Sexton Russell E. Sexton Title Engineer's AssistantDate 8-6-84

(This space for State Use)

ORIGINAL SIGNED BY JERRY SEXTON

DISTRICT SUPERVISOR

APPROVED BY

TITLE

DATE

AUG 14 1984

CONDITIONS OF APPROVAL, IF ANY:

APPROVAL VALID FOR 180 DAYS
PERMIT EXPIRES 2/14/85
UNLESS DRILLING UNDERWAY

RECEIVED

AUG 13 1984

O.S.S.
HOBBS OFFICE

NE MEXICO OIL CONSERVATION COMMISSION
WELL LOCATION AND ACREAGE DEDICATION PLAT

Form C-102
Supersedes C-128
Effective 1-1-65

All distances must be from the outer boundaries of the Section.

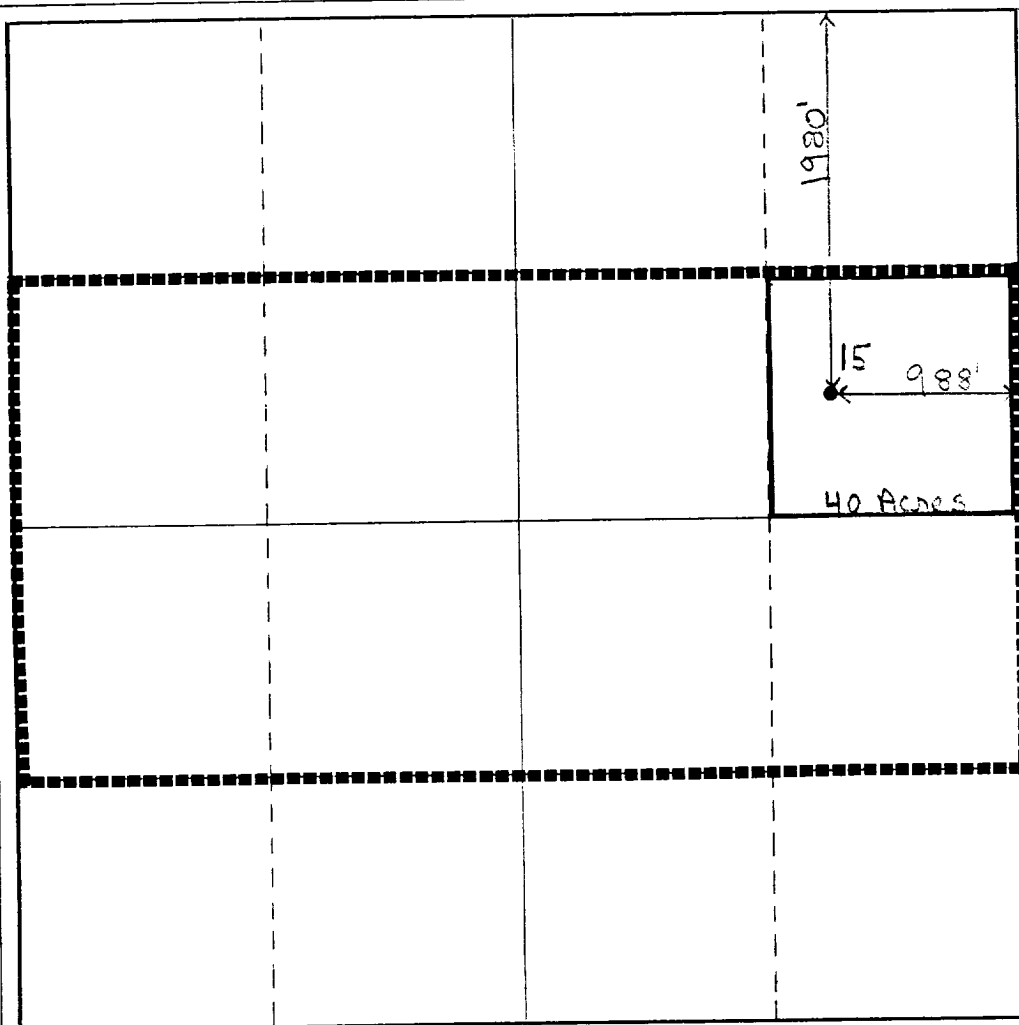
Operator Texaco Inc.			Lease C. H. Weir "A"		Well No. 15
Unit Letter H	Section 12	Township 20-S	Range 37-E	County Lea	
Actual Footage Location of Well: 1980 feet from the North line and 988 feet from the East line					
Ground Level Elev. 3559' GR	Producing Formation Drinkard		Pool Skaggs Drinkard		Dedicated Acreage: 40 Acres

1. Outline the acreage dedicated to the subject well by colored pencil or hachure marks on the plat below.
2. If more than one lease is dedicated to the well, outline each and identify the ownership thereof (both as to working interest and royalty).
3. If more than one lease of different ownership is dedicated to the well, have the interests of all owners been consolidated by communitization, unitization, force-pooling, etc?

☒ Yes ☐ No If answer is "yes," type of consolidation Operating Agreement

If answer is "no," list the owners and tract descriptions which have actually been consolidated. (Use reverse side of this form if necessary.) _____

No allowable will be assigned to the well until all interests have been consolidated (by communitization, unitization, forced-pooling, or otherwise) or until a non-standard unit, eliminating such interests, has been approved by the Commission.



CERTIFICATION

I hereby certify that the information contained herein is true and complete to the best of my knowledge and belief.

Name

Russell E. Sexton

Position

Engineer's Assistant

Company

Texaco Inc.

Date

August 6, 1984

I hereby certify that the well location shown on this plat was plotted from field notes of actual surveys made by me or under my supervision, and that the same is true and correct to the best of my knowledge and belief.

Date Surveyed

July 31, 1984

Registered Professional Engineer
and/or Land Surveyor

R. S. Lane

Certificate No.

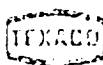
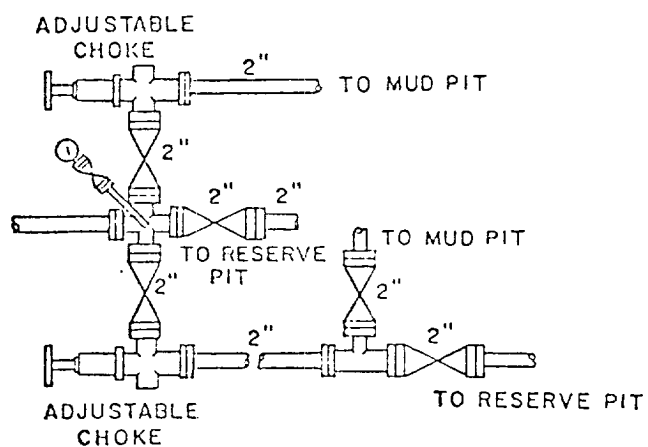
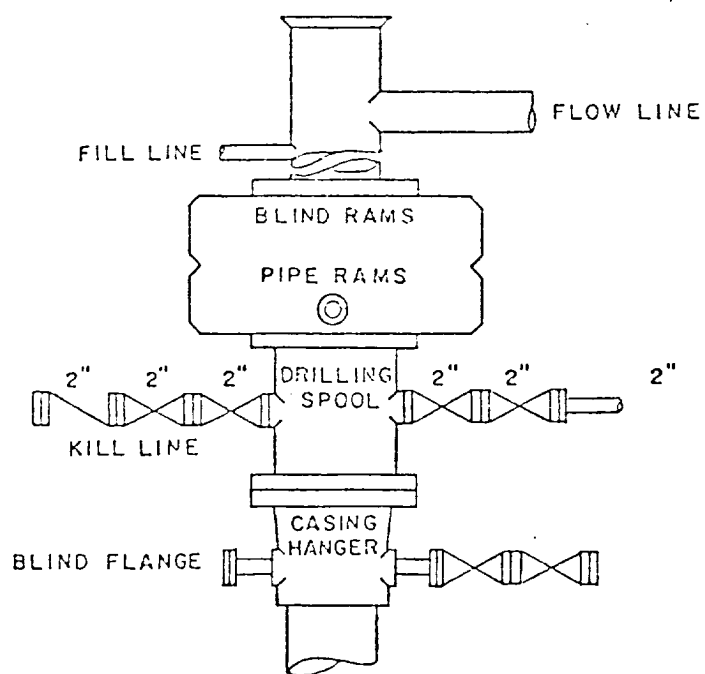
R. S. Lane #8103

0 330 660 990 1320 1650 1980 2310 2640 2000 1500 1000 500 0

RECEIVED

AUG 13 1984

O.C.B.
HOBBS OFFICE



TEXACO, INC.
PRODUCING DEPARTMENT U.S. (EAST)
MIDLAND, TEXAS

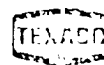


EXHIBIT "B"

DATE	EST. NO.	DRG. NO.
DATE	EST. NO.	DRG. NO.
DATE	EST. NO.	DRG. NO.
DATE	EST. NO.	DRG. NO.

ELF

RECEIVED
AUG 18 1984
GCS
HOLDS OFFICE