

DISTRICT I

P.O. Box 1980, Hobbs, NM 88241-1980

DISTRICT II

P.O. Box Drawer DD, Artesia, NM 88211-0719

DISTRICT III

1000 Rio Brazos Rd., Aztec, NM 87410

DISTRICT IV

P.O. Box 2088, Santa Fe, NM 87504-2088

State of New Mexico

Energy, Minerals and Natural Resources Department

Form C-101

Revised February 10, 1994

Instructions on back

Submit to Appropriate District Office

State Lease - 6 Copies

Fee Lease - 5 Copies

☐ AMENDED REPORT

OIL CONSERVATION DIVISION

P.O. Box 2088

Santa Fe, New Mexico 87504-2088

APPLICATION FOR PERMIT TO DRILL, RE-ENTER, DEEPEN, PLUGBACK, OR ADD A ZONE

¹ Operator Name and Address TEXACO EXPLORATION & PRODUCTION INC. P.O. BOX 730, HOBBS, NM 88240		² OGRID Number 022351
		³ API Number 30 025 29646
⁴ Property Code 11130	⁵ Property Name WEIR, C. H. -A-	⁶ Well No. 18

⁷ Surface Location

UI or lot no.	Section	Township	Range	Lot.Idn	Feet From The	North/South Line	Feet From The	East/West Line	County
I	12	20S	37E		2310	SOUTH	660	EAST	LEA

⁸ Proposed Bottom Hole Location If Different From Surface

UI or lot no.	Section	Township	Range	Lot.Idn	Feet From The	North/South Line	Feet From The	East/West Line	County
⁹ Proposed Pool 1 MONUMENT TUBB					¹⁰ Proposed Pool 2				

¹¹ Work Type Code P	¹² WellType Code O	¹³ Rotary or C.T. -	¹⁴ Lease Type Code S	¹⁵ Ground Level Elevation 3568' KB
¹⁶ Multiple No	¹⁷ Proposed Depth 7204'	¹⁸ Formation	¹⁹ Contractor UNKNOWN	²⁰ Spud Date

²¹ Proposed Casing and Cement Program

SIZE OF HOLE	SIZE OF CASING	WEIGHT PER FOOT	SETTING DEPTH	SACKS OF CEMENT	EST. TOP
15	11-3/4	42	1420	1100	CIRC
11	8-5/8	32	4000	1700	CIRC
7-7/8	5-1/2	15.5	7210	1700	CIRC

²² Describe the proposed program. If this application is to DEEPEN or PLUG BACK give the data on the present productive zone and proposed new productive zone. Describe the blowout prevention program, if any. Use additional sheets if necessary.

Objective: Texaco intends to plug back the current Drinkard completion and recomplete uphole into the Tubb formation.

1. MIRU PU. TOH with production equipment. Install BOP.
2. Set 5-12" CIBP @ 6600' and cap with 35' cement (pbtd=6565').
3. Perforate from 6333'-6520' with 2 jsf (162 holes).
4. Acid treat perms w/ 4000 gallons 15% NEFE.
5. Fracture treat perms w/ 75300 g gel + 286000# 16/30 sand.
6. TOH with treating packer.
7. TIH with production equipment and place on test.

Permit Expires 6 Months From Approval
Date Unless Drilling Underway.
Plugback

²³ I hereby certify that the rules and regulations of the Oil Conservation Division have been complied with and that the information given above is true and complete to the best of my knowledge and belief.

Signature

Printed Name Darrell J. Carriger

Title Engineering Assistant

Date 7/19/95

Telephone 397-0426

OIL CONSERVATION DIVISION

ORIGINAL SIGNED BY

GARY WINK
FIELD REP. II

Approved By:

Title:

Approval Date:

JUL 21 1995

Expiration Date:

Conditions of Approval:

Attached ☐

RECEIVED
JUL 20 1995
UCD HOBBS
OFFICE

DISTRICT I

P.O. Box 1960, Hobbs, NM 88241-1980

DISTRICT II

P.O. Box Drawer DD, Artesia, NM 88211-0719

DISTRICT III

1000 Rio Brazos Rd., Aztec, NM 87410

DISTRICT IV

P.O. Box 2088, Santa Fe, NM 87504-2088

State of New Mexico
Energy, Minerals and Natural Resources Department

OIL CONSERVATION DIVISION

P.O. Box 2088
Santa Fe, New Mexico 87504-2088

Form C-102

Revised February 10, 1994

Instructions on back

Submit to Appropriate District Office

State Lease - 4 Copies

Fee Lease - 3 Copies

☐ AMENDED REPORT

WELL LOCATION AND ACREAGE DEDICATION PLAT

¹ API Number 30 025 29646	² Pool Code 47090	³ Pool Name <i>Monument Tubb</i> SKAGGS-BRINKARD
⁴ Property Code 11130	⁵ Property Name WEIR, C. H. -A-	⁶ Well No. 18
⁷ OGRID Number 022351	⁸ Operator Name TEXACO EXPLORATION & PRODUCTION INC.	⁹ Elevation 3568' KB

¹⁰ Surface Location

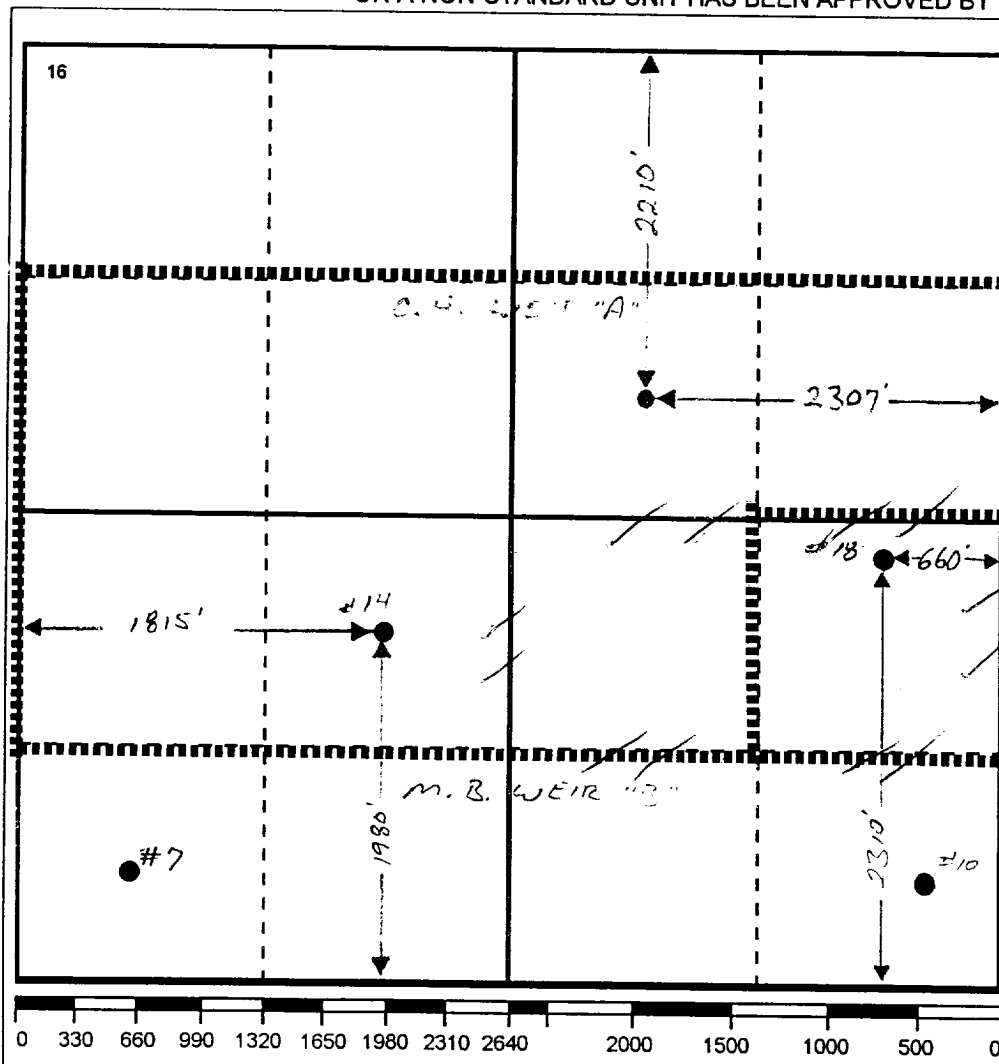
Ul or lot no.	Section	Township	Range	Lot.Idn	Feet From The	North/South Line	Feet From The	East/West Line	County
1	12	20S	37E		2310	SOUTH	660	EAST	LEA

¹¹ Bottom Hole Location If Different From Surface

Ul or lot no.	Section	Township	Range	Lot.Idn	Feet From The	North/South Line	Feet From The	East/West Line	County

¹² Dedicated Acres 40	¹³ Joint or Infill No	¹⁴ Consolidation Code	¹⁵ Order No.
-------------------------------------	-------------------------------------	----------------------------------	-------------------------

NO ALLOWABLE WILL BE ASSIGNED TO THIS COMPLETION UNTIL ALL INTERESTS HAVE BEEN CONSOLIDATED
OR A NON-STANDARD UNIT HAS BEEN APPROVED BY THE DIVISION

¹⁷ OPERATOR CERTIFICATION

I hereby certify that the information
contained herein is true and complete to the
best of my knowledge and belief

Signature:

Printed Name

Darrell J. Camiger

Position

Engineering Assistant

Date

7/19/95

¹⁸ SURVEYOR CERTIFICATION

I hereby certify that the well location shown
on this plat was plotted from field notes of
actual surveys made by me or under my
supervision, and that the same is true and
correct to the best of my knowledge and
belief.

Date Surveyed

Signature & Seal of
Professional Surveyor

Certificate No.

RECEIVED

JUL 20 1995

JCD HOBBS
OFFICE