

NO. OF COPIES RECEIVED	
DISTRIBUTION	
SANTA FE	
FILE	
U.S.G.S.	
LAND OFFICE	
OPERATOR	

3A. Indicate Type of Lease
STATE ☐ FEDERAL ☒

5. State Oil & Gas Lease No.

APPLICATION FOR PERMIT TO DRILL, DEEPEN, OR PLUG BACK

1. Type of Work DRILL <input checked="" type="checkbox"/> DEEPEN <input type="checkbox"/> PLUG BACK <input type="checkbox"/>		7. Unit Agreement Name
2. Type of Well OIL WELL <input checked="" type="checkbox"/> GAS WELL <input type="checkbox"/> OTHER <input type="checkbox"/> SINGLE ZONE <input checked="" type="checkbox"/> MULTIPLE ZONE <input type="checkbox"/>		8. Farm or Lease Name C. H. Weir "B"
3. Name of Operator Texaco Inc.		9. Well No. 8
4. Address of Operator P. O. Box 728, Hobbs, New Mexico 88240		10. Field and Pool, or Wildcat *See Attachment
6. Location of Well UNIT LETTER <u>A</u> LOCATED <u>990</u> FEET FROM THE <u>North</u> LINE <u>330</u> FEET FROM THE <u>East</u> LINE OF SEC. <u>11</u> TWP. <u>20-S</u> REC. <u>37-E</u> RMPM		12. County Lea
19. Proposed Depth 7200'		19A. Formation **See Attachment
20. Rotary or C.T. Rotary		21. Approx. Date Work will start September 15, 1986
11. Elevations (Show whether DT, KT, etc.) 3589' GR		21A. Kind & Status Plug. Bond Blanket
21B. Drilling Contractor		

PROPOSED CASING AND CEMENT PROGRAM

SIZE OF HOLE	SIZE OF CASING	WEIGHT PER FOOT	SETTING DEPTH	SACKS OF CEMENT	EST. TOP
24"	20"	94#	40'	Redi-mix	Surface
15"	11-3/4"	42#	1450'	1000	Circulate
11"	8-5/8"	24# & 28#	4000'	1200	Circulate
7-7/8"	5-1/2"	15.5# & 17#	7200'	1250	Circulate

Cementing Program

Conductor casing: Cement with Redi-mix.

Surface casing: 1000 sxs Class "H" with 1/4# flocele, 2% CaCl (15.6 ppg, 1.18 cu.ft/sx).

Intermediate casing: 1000 sxs Light weight with 15# salt, 1/4# flocele (12.7 ppg, 2.1 cu.ft/sx) followed by 200 sxs Class "H" with 1/4# flocele, 2% CaCl (15.6 ppg, 1.18 cu.ft/sx).

Production casing: First Stage: 250 sxs Light Weight w/5#/sx gilsonite (12.7 ppg, 1.84 Ft3/sx, 9.9 gal/sx), 300 sxs Class "H" w/ 1/4# flocele plug, .6% Halad-9 (15.6 ppg, 1.18 cu.ft/sx).

Continued on Page 2

ABOVE SPACE DESCRIBE PROPOSED PROGRAM: IF PROPOSAL IS TO DEEPEN OR PLUG BACK, GIVE DATA ON PRESENT PRODUCTIVE ZONE AND PROPOSED NEW PRODUCTION ZONE. GIVE BLOWOUT PREVENTER PROGRAM, IF ANY.

I hereby certify that the information above is true and complete to the best of my knowledge and belief.

Signed L. J. Seeman Title Dist. Petr. Engr. Date 8/06/86

(This space for State Use)

ORIGINAL SIGNED BY JERRY SEXTON

DISTRICT 1 SUPERVISOR

APPROVED BY _____ TITLE _____ DATE AUG 7 1986

CONDITIONS OF APPROVAL, IF ANY:

Permit Expires 6 Months From Approval
Date Unless Drilling Underway.

C. H. WEIR "B" WELL NO. 8
LEA COUNTY, NEW MEXICO

Production casing:

Second Stage: 700 sxs Light weight w/1/4# flocele (12.4 ppg,
2.00 cu.ft/sx). (DV tool @ 5250').

All other wells in this 1/4,1/4 section are operated by Texaco.

RECEIVED
AUG 6 1986
HOBBS OFFICE

C. H. WEIR "B" WELL NO. 8
 990' FNL & 330' FEL
 SECTION 11, T-20-S, R-37-E
 LEA COUNTY, NEW MEXICO

*Field and Pool

Weir Blinebry
 Monument Tubb
 Skaggs Drinkard

**Formation

Blinebry
 Tubb
 Drinkard

5). Stem
 do. Blinebry
 do. Tubb

All distances must be from the outer boundaries of the Section.

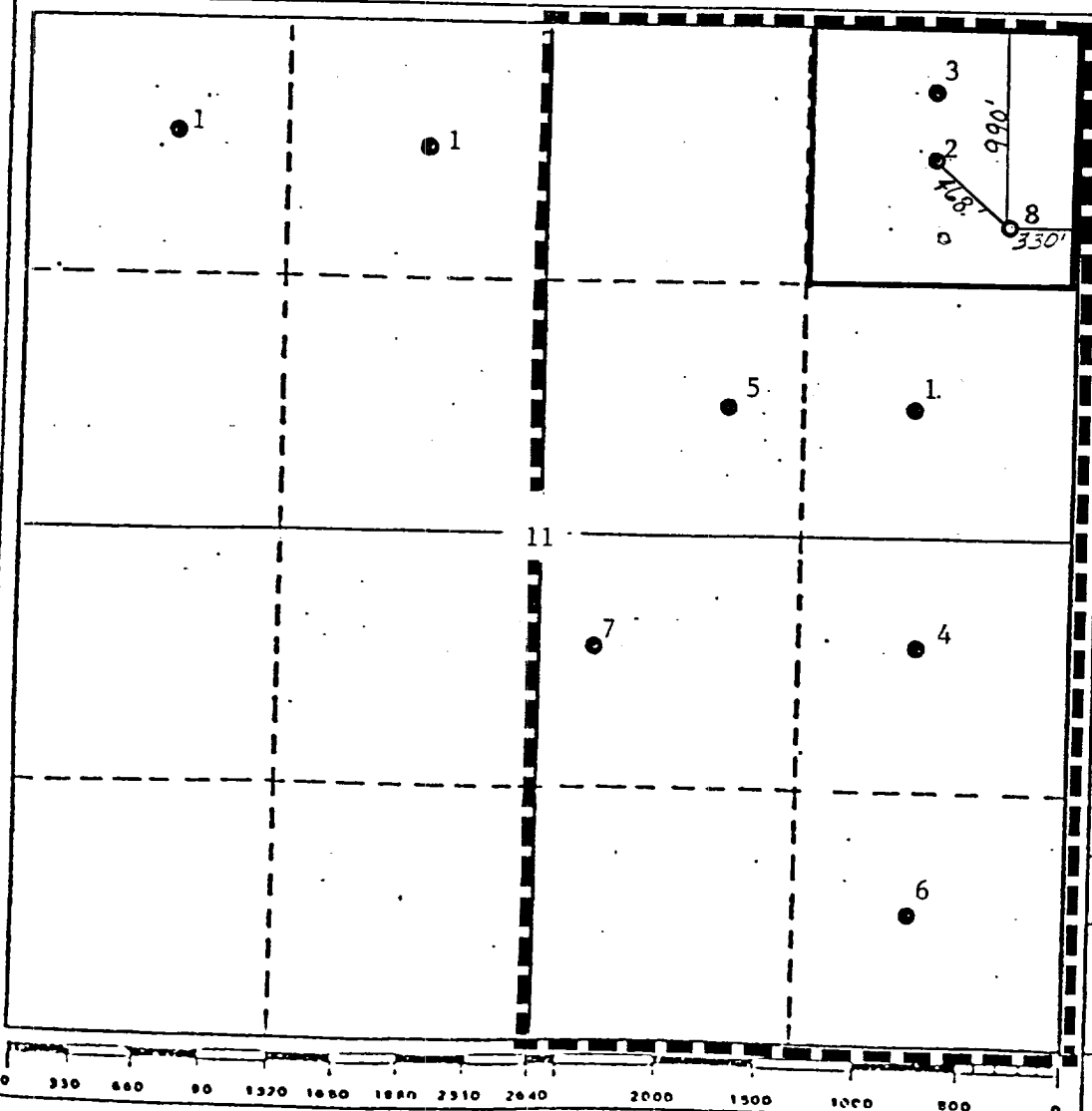
Operator Texaco Inc.		Lease C. H. Wier "B"		Well No. 8	
Unit Letter A	Section 11	Township 20 South	Range 37 East	County Lea	
Actual Footage Location of Well: 990 feet from the North line and 330 feet from the East line					
Ground Level Elev. 3589'	Producing Formation Blinebry		Pool Weir Blinebry	Dedicated Acreage: 40 Acres	

1. Outline the acreage dedicated to the subject well by colored pencil or hatchure marks on the plat below.
2. If more than one lease is dedicated to the well, outline each and identify the ownership thereof (both as to working interest and royalty).
3. If more than one lease of different ownership is dedicated to the well, have the interests of all owners been consolidated by communitization, unitization, force-pooling, etc?

☐ Yes ☐ No If answer is "yes," type of consolidation _____

If answer is "no," list the owners and tract descriptions which have actually been consolidated. (Use reverse side of this form if necessary.) _____

No allowable will be assigned to the well until all interests have been consolidated (by communitization, unitization, forced-pooling, or otherwise) or until a non-standard unit, eliminating such interests, has been approved by the Division.



CERTIFICATION

I hereby certify that the information contained herein is true and complete to the best of my knowledge and belief.

B. L. Eiland

Name

B. L. Eiland

Position

Division Surveyor

Company

Texaco Inc.

Date

July 31, 1986

I hereby certify that the well location shown on this plat was plotted from field notes of actual surveys made by me or under my supervision, and that the same is true and correct to the best of my knowledge and belief.

Date Surveyed

July 28, 1986

Registered Professional Engineer
and State Surveyor*B. L. Eiland*

B. L. Eiland

Certificate No. 5386

RECEIVED
AUG 6 1986
C-2
HCB'S OFFICE

All distances must be from the outer boundaries of the Section.

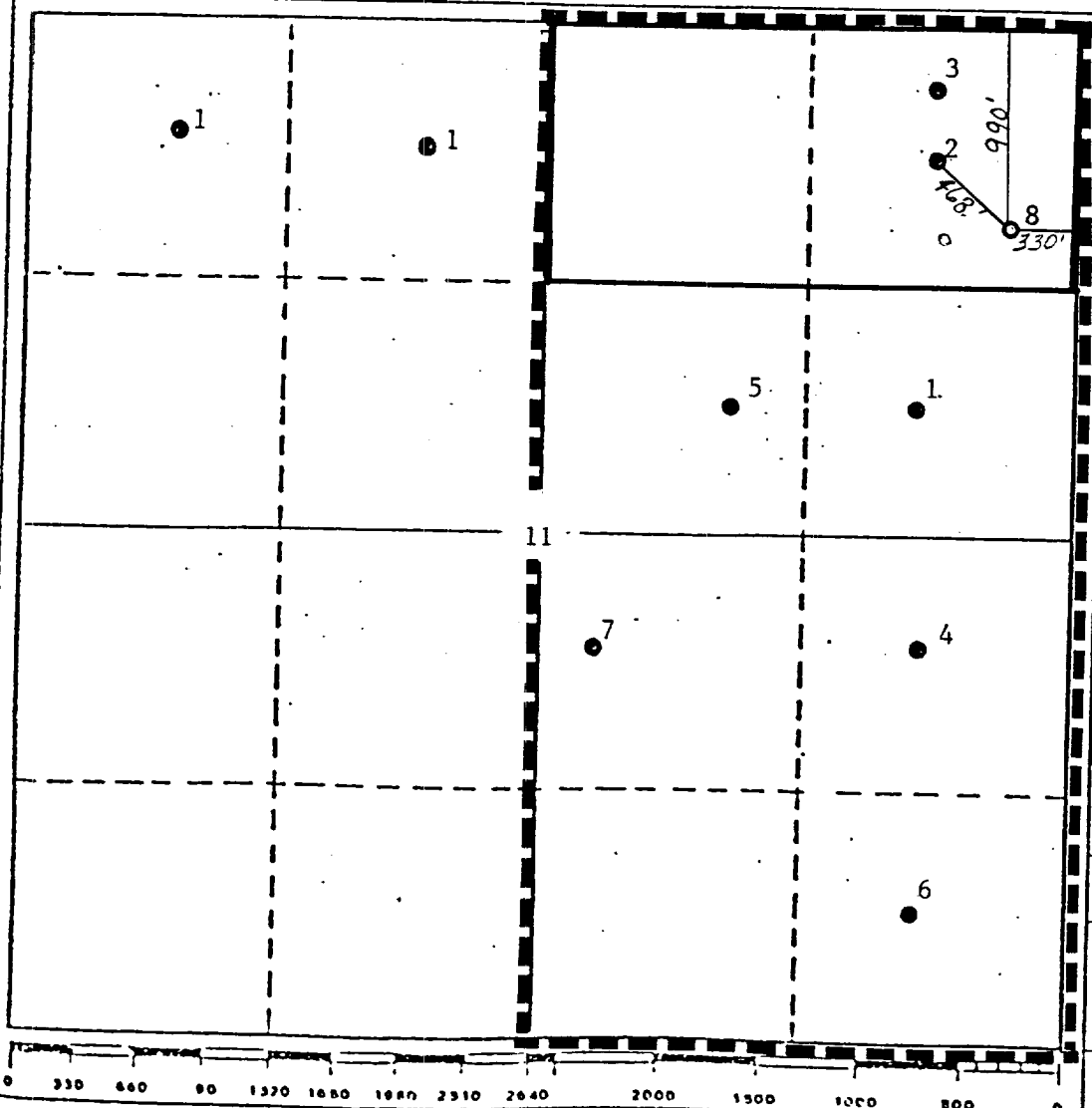
Operator Texaco Inc.			Lease C. H. Wier "B"			Well No. 8		
Unit Letter A	Section 11	Township 20 South	Range 37 East	County Lea				
Actual Footage Location of Well: 990 feet from the North line and 330 feet from the East line								
Ground Level Elev. 3589'	Producing Formation Tubb		Pool Monument Tubb			Dedicated Acreage: 80 Acres		

1. Outline the acreage dedicated to the subject well by colored pencil or hachure marks on the plat below.
2. If more than one lease is dedicated to the well, outline each and identify the ownership thereof (both as to working interest and royalty).
3. If more than one lease of different ownership is dedicated to the well, have the interests of all owners been consolidated by communitization, unitization, force-pooling, etc?

☐ Yes ☐ No If answer is "yes," type of consolidation _____

If answer is "no," list the owners and tract descriptions which have actually been consolidated. (Use reverse side of this form if necessary.) _____

No allowable will be assigned to the well until all interests have been consolidated (by communitization, unitization, forced-pooling, or otherwise) or until a non-standard unit, eliminating such interests, has been approved by the Division.



CERTIFICATION

I hereby certify that the information contained herein is true and complete to the best of my knowledge and belief.

B. L. Eiland
Name

B. L. Eiland

Position

Division Surveyor

Company

Texaco Inc.

Date

July 31, 1986

I hereby certify that the well location shown on this plat was plotted from field notes of actual surveys made by me or under my supervision, and that the same is true and correct to the best of my knowledge and belief.

Date Surveyed

July 28, 1986

Registered Professional Engineer and/or Land Surveyor 1483

B. L. Eiland

B. L. Eiland

Certificate No.

4386

All distances must be from the outer boundaries of the Section.

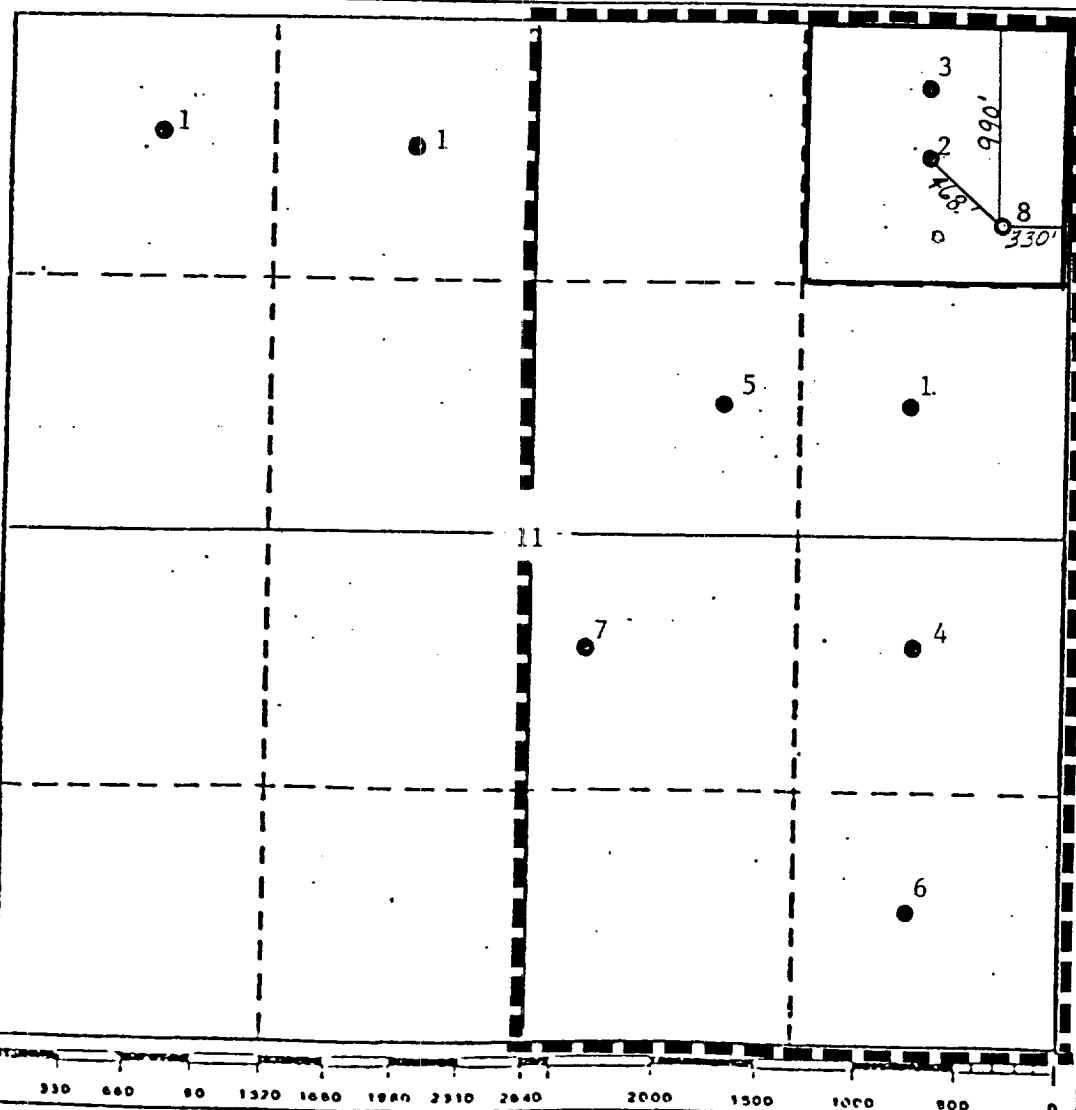
Operator Texaco Inc.			Lease C. H. Wier "B"		Well No. 8
Unit Letter A	Section 11	Township 20 South	Range 37 East	County Lea	
Actual Footage Location of Well: 990 feet from the North line and 330 feet from the East line					
Ground Level Elev. 3589'	Producing Formation Drinkard		Pool Skaggs Drinkard		Dedicated Acreage: 40 Acres

1. Outline the acreage dedicated to the subject well by colored pencil or hatchure marks on the plat below.
2. If more than one lease is dedicated to the well, outline each and identify the ownership thereof (both as to working interest and royalty).
3. If more than one lease of different ownership is dedicated to the well, have the interests of all owners been consolidated by communitization, unitization, force-pooling, etc?

☐ Yes ☐ No If answer is "yes," type of consolidation _____

If answer is "no," list the owners and tract descriptions which have actually been consolidated. (Use reverse side of this form if necessary.) _____

No allowable will be assigned to the well until all interests have been consolidated (by communitization, unitization, forced-pooling, or otherwise) or until a non-standard unit, eliminating such interests, has been approved by the Division.



CERTIFICATION

I hereby certify that the information contained herein is true and complete to the best of my knowledge and belief.

B. L. Eiland

Name

B. L. Eiland

Position

Division Surveyor

Company

Texaco Inc.

Date

July 31, 1986

I hereby certify that the well location shown on this plat was plotted from field notes of actual surveys made by me or under my supervision, and that the same is true and correct to the best of my knowledge and belief.

Date Signed

JULY 28 1986

Registered Professional Surveyor and/or Land Surveyor

B. L. Eiland

Certificate No.

4386

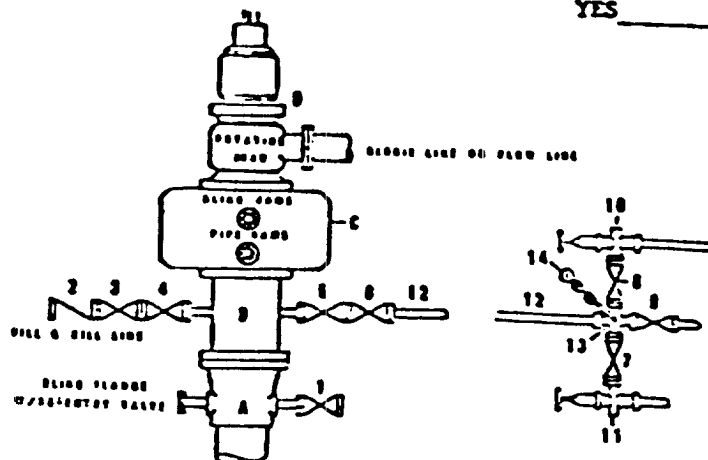
RECEIVED

AUG 6 1986

HOBBY OFFICE

CONDITION II-B 3000 WP
FOR AIR DRILLING OR
WHERE YATES AIR BLOWS ARE EXPECTED

H₂S TRIM REQUIRED
YES _____ NO _____



INSTALLATION CONTROL

MATERIAL LIST - CONDITION II - B
FOR AIR DRILLING

- A Texaco Wellhead
- B 3000 WP drilling spool with a 2" minimum flanged outlet for kill-line and 3" minimum flanged outlet for choke line
- C 3000 WP dual ram type preventer, hydraulic operated with 1" steel, 3000 WP control lines (where sub-structure height is adequate, 2-3000 WP single ram type preventers may be utilized.)
- D Rotating Head and extended choke line.
- 1,3,4, 7,8 2" minimum 3000 WP flanged full opening steel gate valve, or Halliburton Le Torr Plug valve.
- 2 2" minimum 3000 WP back pressure valve
- 5,6,9 3" minimum 3000 WP flanged full opening steel gate valve, or Halliburton Le Torr Plug valve.
- 12 2" minimum schedule 80, Grade "B", seamless line pipe
- 13 2" minimum x 3" minimum 3000 WP flanged cross
- 10, 11 2" minimum 3000 WP adjustable choke bodies
- 14 Cameron Mud Gauge or equivalent (location optional in choke line.)

SCALE	DATE	REV. NO.	REV. NO.
DRAWN BY			
CHECKED BY			
APPROVED BY			



TEXACO, INC.
PRODUCING DEPARTMENT (S) (S) (S)
MIDLAND, TEXAS



EXHIBIT C

RECEIVED
JUL 17 1986
FBI

7/17/86 173
FBI