

NEW MEXICO OIL CONSERVATION COMMISSION  
WELL LOCATION AND ACREAGE DEDICATION PLAT

Form C-102  
Supersedes C-128  
Effective 1-1-65

All distances must be from the outer boundaries of the Section.

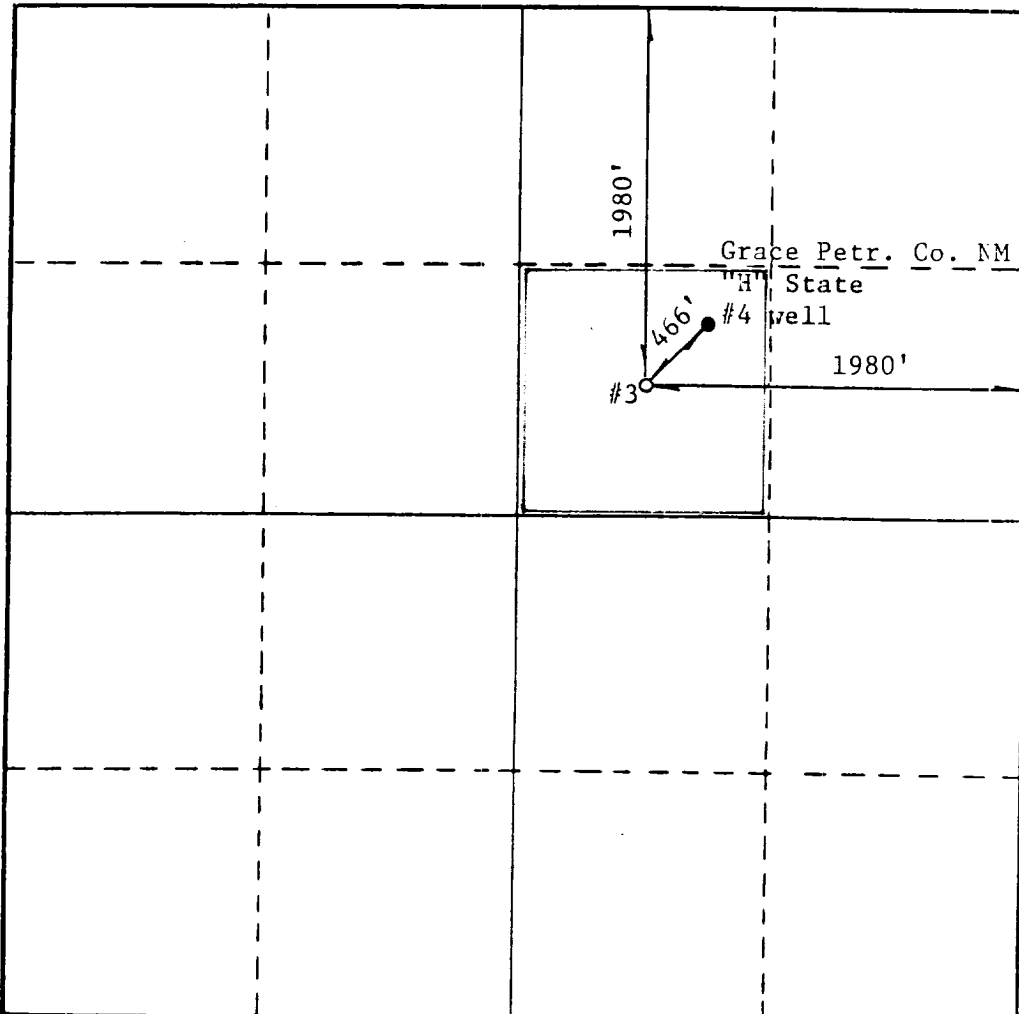
Operator Cities Service Oil & Gas Corp.			Lease State "H"		Well No. 3
Unit Letter G	Section 17	Township 22-South	Range 36-East	County Lea	
Actual Footage Location of Well: 1980 feet from the North line and 1980' feet from the East line					
Ground Level Elev. 3559.3'	Producing Formation Strawn		Pool Undesign. Langley Strawn		Dedicated Acreage: 40 Acres

1. Outline the acreage dedicated to the subject well by colored pencil or hatchure marks on the plat below.
2. If more than one lease is dedicated to the well, outline each and identify the ownership thereof (both as to working interest and royalty).
3. If more than one lease of different ownership is dedicated to the well, have the interests of all owners been consolidated by communitization, unitization, force-pooling, etc?

☐ Yes ☐ No If answer is "yes," type of consolidation \_\_\_\_\_

If answer is "no," list the owners and tract descriptions which have actually been consolidated. (Use reverse side of this form if necessary.) \_\_\_\_\_

No allowable will be assigned to the well until all interests have been consolidated (by communitization, unitization, forced-pooling, or otherwise) or until a non-standard unit, eliminating such interests, has been approved by the Commission.



CERTIFICATION

I hereby certify that the information contained herein is true and complete to the best of my knowledge and belief.

Name  
*JA Vitano*  
Position  
Dist. Opr. Mgr. - Prod.  
Company  
Cities Service O&G Corp.  
Date  
June 23, 1987

I hereby certify that the well location shown on this plat was plotted from field notes of actual surveys made by me or under my supervision, and that the same is true and correct to the best of my knowledge and belief.

Date Surveyed  
June 22, 1987  
Registered Professional Engineer  
and/or Land Surveyor  
*Ronald L. Gordon*  
Certificate No. 676  
RONALD L. GORDON, 3239

#4 is same as 1st 600000

RECEIVED  
JUN 24 1987  
OCD  
HOBBS OFFICE

Rec'd 10/37/87

ELF