

NEW MEXICO OIL CONSERVATION COMMISSION
WELL LOCATION AND ACREAGE DEDICATION PLAT

Form C-102
Supersedes C-128
Effective 1-1-65

All distances must be from the outer boundaries of the Section

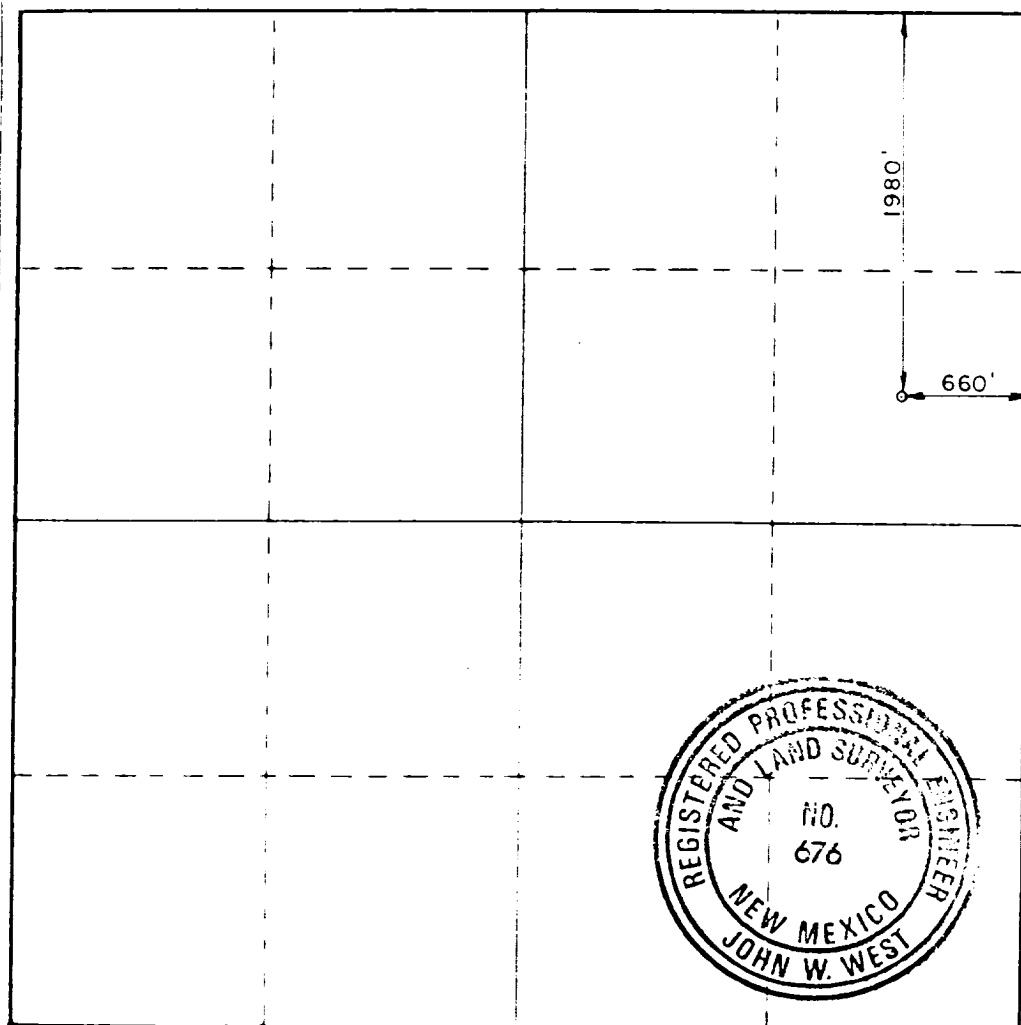
Operator Enron Oil & Gas Company		Lease Grama Ridge 8 State		Well No. 1
Tract Letter H	Section 8	Township 22-S	Range 34-E	County Lea
Actual Portage Location of Well: 1980 feet from the North line and 660 feet from the East line				
Ground Level Elev. 3566.9	Producing Formation Wolfcamp	Pool Grama Ridge	Dedicated Acreage: 320 E $\frac{1}{2}$ Acres	

1. Outline the acreage dedicated to the subject well by colored pencil or hatchure marks on the plat below.
2. If more than one lease is dedicated to the well, outline each and identify the ownership thereof (both as to working interest and royalty).
3. If more than one lease of different ownership is dedicated to the well, have the interests of all owners been consolidated by communitization, unitization, force-pooling, etc?

☐ Yes ☐ No If answer is "yes," type of consolidation _____

If answer is "no," list the owners and tract descriptions which have actually been consolidated. (Use reverse side of this form if necessary.) _____

No allowable will be assigned to the well until all interests have been consolidated (by communitization, unitization, forced-pooling, or otherwise) or until a non-standard unit, eliminating such interests, has been approved by the Commission.



CERTIFICATION

I hereby certify that the information contained herein is true and complete to the best of my knowledge and belief

Betty Gildon
Name

Betty Gildon

Position
Regulatory Analyst

Company
Enron Oil & Gas Company

Date
2/2/88

I hereby certify that the well location shown on this plat was plotted from field notes of actual surveys made by me or under my supervision, and that the same is true and correct to the best of my knowledge and belief.

Date Surveyed
August 31, 1987

Registered Professional Engineer and/or Land Surveyor

John W. West
Certificate No. JOHN W. WEST, 676

RONALD J. EIDSON, 3239

RECEIVED
FEB 4 1988
OCD
HOBBS OFFICE