

UNITED STATES
DEPARTMENT OF THE INTERIOR
BUREAU OF LAND MANAGEMENT

APPLICATION FOR PERMIT TO DRILL, DEEPEN, OR PLUG BACK

1a. TYPE OF WORK

DRILL ☒

DEEPEN ☐

PLUG BACK ☐

b. TYPE OF WELL

OIL
WELL ☐

GAS
WELL ☒

OTHER

SINGLE
ZONE ☐

MULTIPLE
ZONE ☒

2. NAME OF OPERATOR

Hadson Petroleum (USA), Inc. (405) 235-9531

3. ADDRESS OF OPERATOR

P.O. Box 26770, Oklahoma City, Ok. 73126-6770

4. LOCATION OF WELL (Report location clearly and in accordance with any State requirements.)*

At surface

unit # 1980' FNL & 660' FEL (SENE)

At proposed prod. zone

Same

14. DISTANCE IN MILES AND DIRECTION FROM NEAREST TOWN OR POST OFFICE*

15 air miles SW of Oil Center, New Mexico

15. DISTANCE FROM PROPOSED*

LOCATION TO NEAREST
PROPERTY OR LEASE LINE, FT.
(Also to nearest drlg. unit line, if any)

660'

16. NO. OF ACRES IN LEASE

640

17. NO. OF ACRES ASSIGNED
TO THIS WELL

320

18. DISTANCE FROM PROPOSED LOCATION*
TO NEAREST WELL, DRILLING, COMPLETED,
OR APPLIED FOR, ON THIS LEASE, FT.

N/A

19. PROPOSED DEPTH

13,725'

20. ROTARY OR CABLE TOOLS

Rotary

21. ELEVATIONS (Show whether DF, RT, GR, etc.)

3,413' ungraded ground

22. APPROX. DATE WORK WILL START*

Dec. 1, 1987

23. PROPOSED CASING AND CEMENTING PROGRAM

SIZE OF HOLE	SIZE OF CASING	WEIGHT PER FOOT	SETTING DEPTH	QUANTITY OF CEMENT
17-1/2"	13-3/8"	46 ^{5/8} (H-40)	1,000'	825 SX CIRCULATE
12-1/4"	9-5/8"	36 (K-55/S-80)	5,500'	2,000 SX CIRCULATE
8-1/2"	7"	23/26 (N-80/S-95)	11,800'	255 SX
6-1/8"	4-1/2"	15.1 (P-110)	13,725'	265 SX circ. liner

5,000 psi BOP used to 11,800'.
10,000 psi BOP used to 13,725'.

See Pages 2-6 for details on casing, cement, & pressure control.

IN ABOVE SPACE DESCRIBE PROPOSED PROGRAM: If proposal is to deepen or plug back, give data on present productive zone and proposed new productive zone. If proposal is to drill or deepen directionally, give pertinent data on subsurface locations and measured and true vertical depths. Give blowout preventer program, if any.

24.

SIGNED

W. P. England

TITLE

Drill. & Product. Engr.

DATE

OCT 26 1987

(This space for Federal or State office use)

PERMIT NO.

APPROVAL DATE

APPROVED BY

CONDITIONS OF APPROVAL, IF ANY:

TITLE

DATE

11-6-87

cc: BLM (3), England (3), NMOC (2, via BLM)

*See Instructions On Reverse Side

Title 18 U.S.C. Section 1001, makes it a crime for any person knowingly and willfully to make to any department or agency of the United States any false, fictitious or fraudulent statements or representations as to any matter within its jurisdiction.

WELL LOCATION AND ACREAGE DEDICATION

Supersedes C-128
Effective 1-1-65

All distances must be from the outer boundaries of the Section

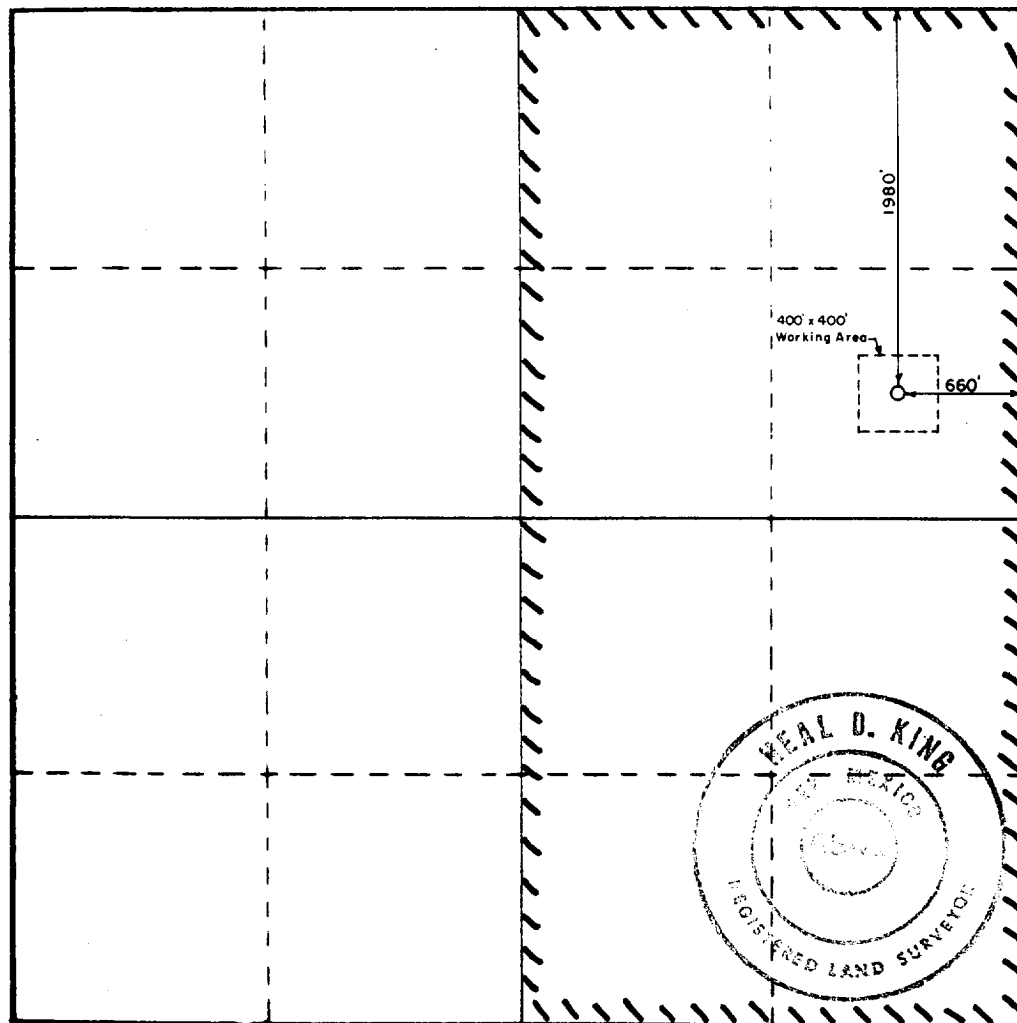
Operator Hudson Petroleum (U.S.A.), Inc.		Lease Cibola Federal		Well No. 1-28
Unit Letter H	Section 28	Township 22 South	Range 34 East	County Lea
Actual Footage Location of Well: 1980 feet from the North line and 660 feet from the East line				
Ground Level Elev. 3413.1	Producing Formation Atoka & Morrow	Pool Wildcat	Dedicated Acreage: 320 Acres	

1. Outline the acreage dedicated to the subject well by colored pencil or hatchure marks on the plat below.
2. If more than one lease is dedicated to the well, outline each and identify the ownership thereof (both as to working interest and royalty).
3. If more than one lease of different ownership is dedicated to the well, have the interests of all owners been consolidated by communitization, unitization, force-pooling, etc?

☐ Yes ☐ No If answer is "yes," type of consolidation _____

If answer is "no," list the owners and tract descriptions which have actually been consolidated. (Use reverse side of this form if necessary.) _____

No allowable will be assigned to the well until all interests have been consolidated (by communitization, unitization, forced-pooling, or otherwise) or until a non-standard unit, eliminating such interests, has been approved by the Commission.



CERTIFICATION

I hereby certify that the information contained herein is true and complete to the best of my knowledge and belief.

Name
W. P. England

Position
Drilling & Production Engr.

Company
Hudson Petroleum (USA), Inc.

Date
OCT 26 1987

I hereby certify that the well location shown on this plat was plotted from field notes of actual surveys made by me or under my supervision, and that the same is true and correct to the best of my knowledge and belief.

October 7, 1987

Date Surveyed
Keal D. King
Registered Professional Engineer
and or Land Surveyor

6541

Certificate No.

0 330 660 990 1320 1650 1980 2310 2640 2970 3300 3630 3960 0

Hadson Petro (USA), Inc.
Cibola Federal -28
1980' FNL & 660' FEL
Sec. 28, T. 22 S., R. 34 E.
Lea County, New Mexico

8 Point Drilling Program

1. FORMATION TOPS

The estimated tops of important geologic markers are:

<u>Formation Name</u>	<u>GL Depth*</u>	<u>KB Depth</u>	<u>Subsea Elevation</u>
Quaternary Dunes	000'	20'	+ 3,413'
Delaware	4,400'	4,420'	- 987'
Bone Spring	8,590'	8,610'	- 5,177'
Wolfcamp	11,440'	11,460'	- 8,027'
Strawn	11,940'	11,960'	- 8,527'
Atoka	12,275'	12,295'	- 8,862'
Morrow X	13,045'	13,065'	- 9,632'
Morrow A	13,205'	13,225'	- 9,792'
Morrow B	13,325'	13,345'	- 9,912'
Morrow C	13,375'	13,395'	- 9,962'
Morrow D	13,395'	13,415'	- 9,982'
Total Depth (TD)	13,725'	13,745'	-10,312'

* ungraded ground level

2. NOTABLE ZONES

The estimated GL depths at which important zones are expected to be encountered and their contents are:

Delaware (oil): 4,400'
Bone Spring (oil): 8,590'
Wolfcamp (oil): 11,440'
Strawn (gas): 11,940'
Atoka (oil & gas): 12,275'

Morrow X (gas): 13,045'
Morrow A (gas): 13,205'
Morrow B (gas): 13,325'
Morrow C (gas): 13,375'
Morrow D (gas): 13,395'

The entire well bore will either be cased or lined. Surface and intermediate casing will be cemented throughout their lengths. Production casing and the liner will be cemented through zones of interest. Water zones will be protected with casing and weighted mud. Fresh water encountered during drilling will be recorded by depth, cased, and cemented. Oil and gas shows will be tested to determine commercial potential.

3. PRESSURE CONTROL

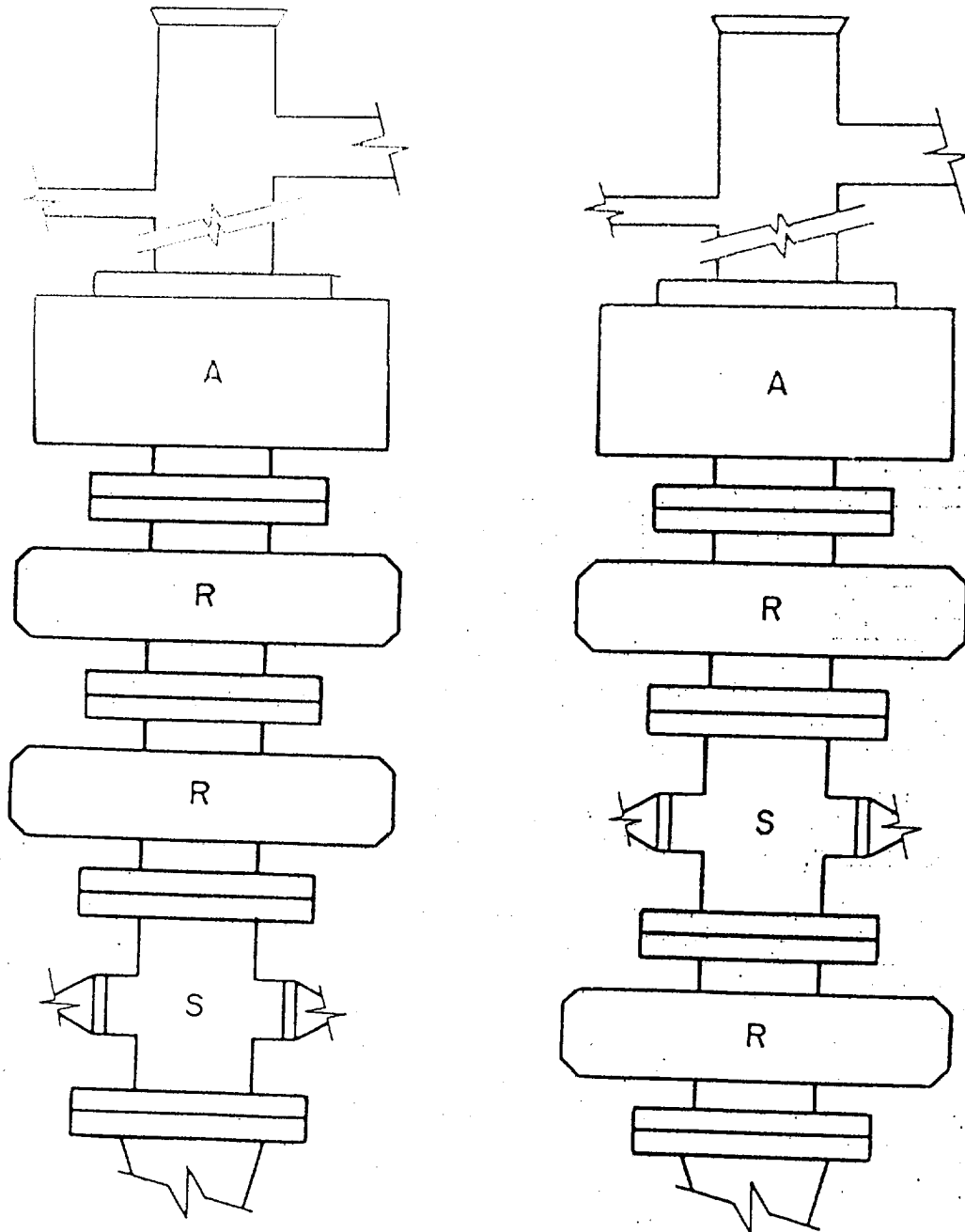
The drilling contract has not yet been awarded, thus the exact types of BOPs to be used are not yet known. A 5,000 psi annular preventer with double rams will be used to 11,800'. A 10,000 psi annular preventer with double rams will be used from 11,800' to 13,725' (TD). Schematic diagrams of typical 5,000 and 10,000 psi BOPs are on the following two pages.

BOP drills and pressure tests will be conducted during installation, before drilling out casing shoes, and monthly. Ram preventers and related control equipment will be tested to the rated working pressure of the stack, or to 70% of the minimum internal yield pressure of the casing, whichever is less. Annular preventers will be tested to 50% of their rated working pressure after installation.

The pipe and blind rams will be activated at the midpoint of each round trip. All BOP mechanical and pressure tests will be recorded on the driller's log.

Hadson Petroleum (USA), Inc.
Cibola Federal 1-28
1980' FNL & 660' FEL
Sec. 28, T. 22 S., R. 34 E.
Lea County, New Mexico

PAGE 3



TYPICAL 5,000 psi WORKING PRESSURE BOP STACKS

A = Annular type blowout preventer

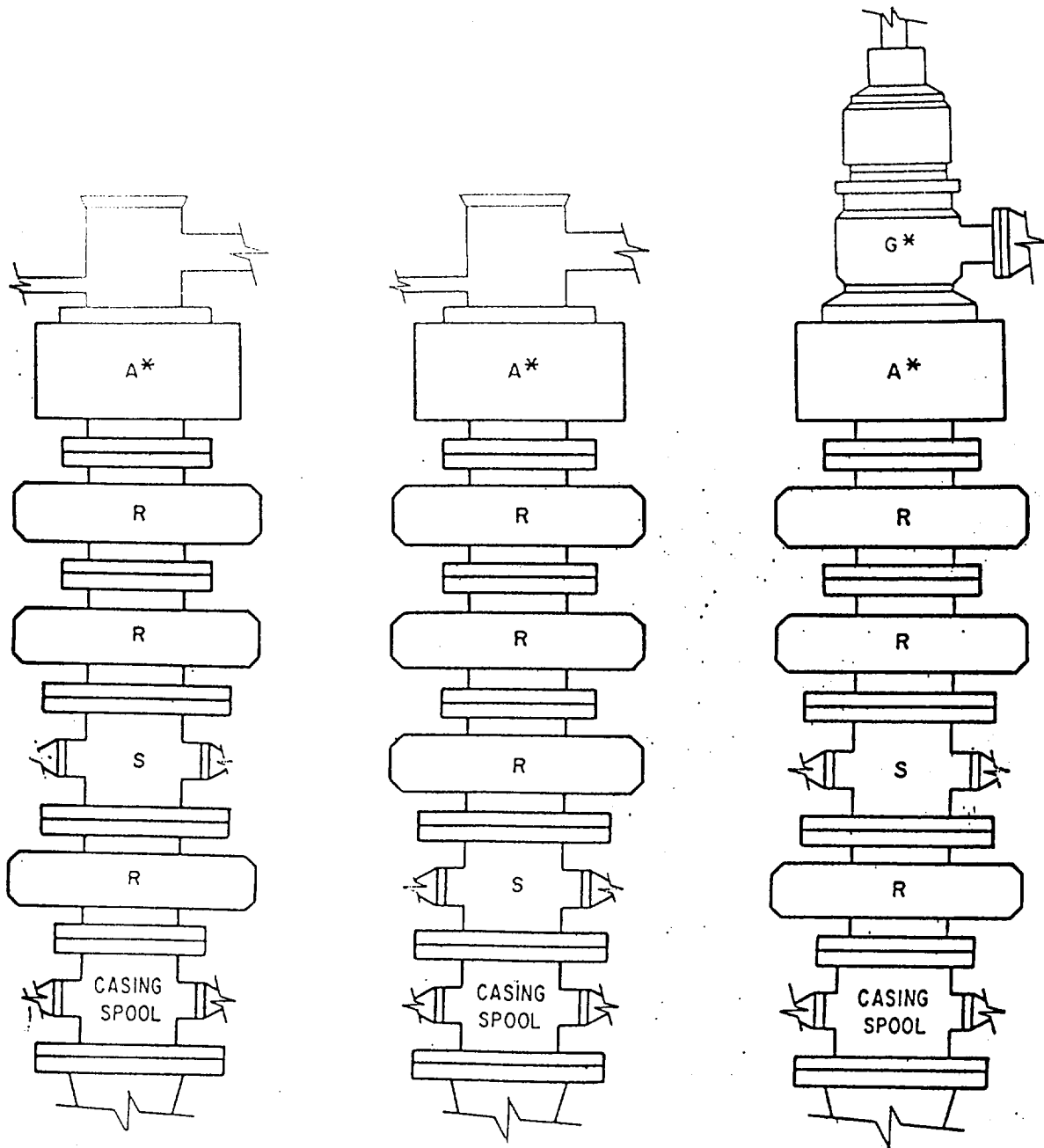
R = Ram

S = Drilling spool with side outlet connections for choke & kill lines

RECEIVED
NOV 9 1987
OCCD
HOBBS OFFICE

Hadson Petroleum (USA), Inc.
 Cibola Federal 1-28
 1980' FNL & 660' FEL
 Sec. 28, T. 22 S., R. 34 E.
 Lea County, New Mexico

PAGE 4



TYPICAL 10,000 psi WORKING PRESSURE BOP ARRANGEMENTS

A = Annular type blowout preventer

G = Rotating Head

R = Ram

S = Drilling spool with side outlet connections for choke & kill lines