

**NEW MEXICO OIL CONSERVATION COMMISSION
WELL LOCATION AND ACREAGE DEDICATION PLAT**

Form O-128
Supersedes O-128
Effective 1-1-65

All distances must be from the outer boundaries of the Section

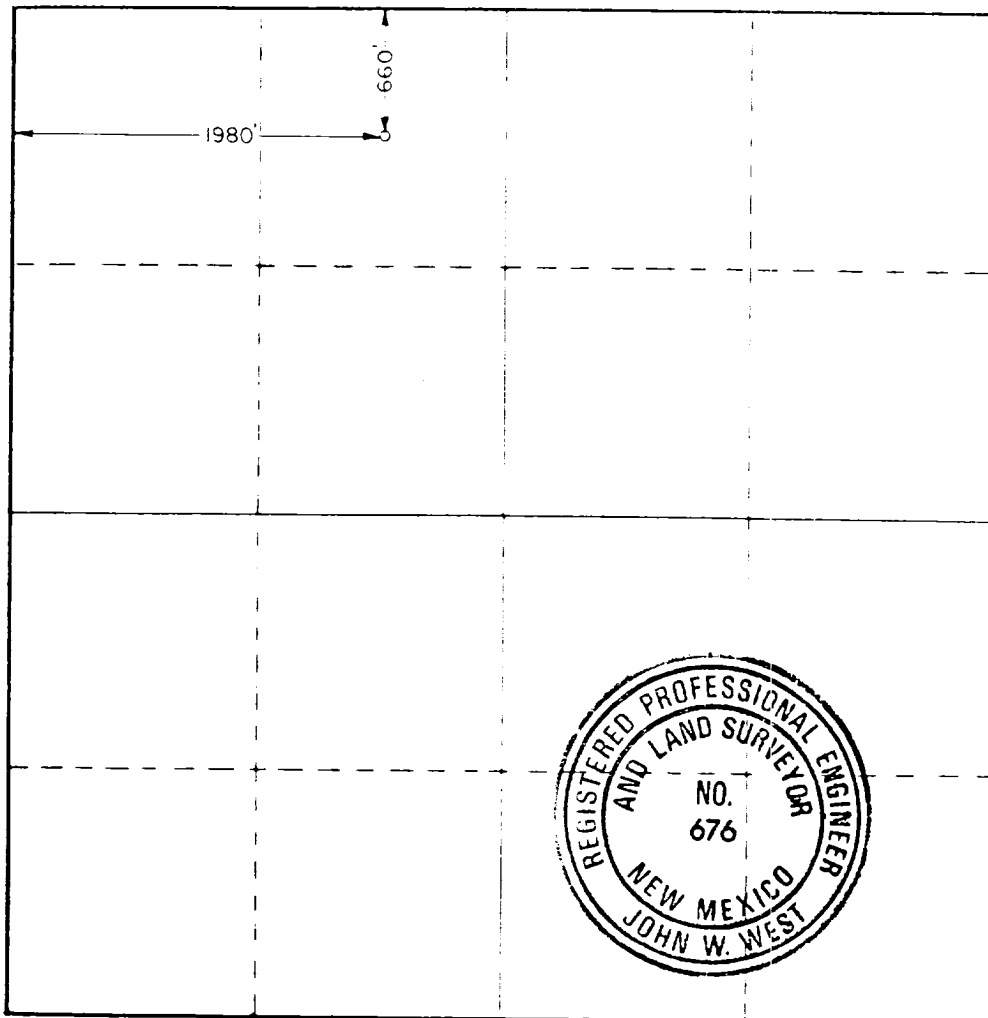
Lessee CHEVRON U.S.A., INC.			Lease DISC		Acres 101
Section 30	Township 20 SOUTH	Range 37 EAST	County DEA		
Actual Perforation Location of Well: <div style="display: flex; justify-content: space-between;"> 660 feet from the NORTH line and 1980 feet from the WEST line </div>					
Ground Level Elev. 3536.1	Producing Formation Eunice Monumument	Area Eunice Monumument G/SA	Estimated Acreage 40		

1. Outline the acreage dedicated to the subject well by colored pencil or hachure marks on the plat below.
2. If more than one lease is dedicated to the well, outline each and identify the ownership thereof (both as to working interest and royalty)
3. If more than one lease of different ownership is dedicated to the well, have the interests of all owners been consolidated by communitization, unitization, force-pooling, etc?

☒ Yes ☐ No If answer is "yes," type of consolidation unitization

If answer is "no," list the owners and tract descriptions which have actually been consolidated (Use reverse side of this form if necessary.) _____

No allowable will be assigned to the well until all interests have been consolidated (by communitization, unitization, forced-pooling, or otherwise) or until a non-standard unit, eliminating such interests, has been approved by the Commission.



CERTIFICATION

I hereby certify that the information contained herein is true and complete to the best of my knowledge and belief.

[Signature] for M&A

Name
M. E. Akins
Position
Staff Drilling Engineer
Company
Chevron U.S.A. Inc.
Date
February 4, 1988

I hereby certify that the well location shown on this plat was plotted from field notes of actual surveys made by me or under my supervision, and that the same is true and correct to the best of my knowledge and belief.

Date Surveyed
February 1, 1988
Registered Professional Engineer and Land Surveyor
[Signature]
Certificate No. **JOHN W. WEST, 676**
RONALD J. EIDSON, 3239