

STATE OF NEW MEXICO  
ENERGY AND MINERALS DEPARTMENT

OIL CONSERVATION DIVISION

P. O. BOX 2088  
SANTA FE, NEW MEXICO 87501

Form C-101  
Revised 10-1-78

NO. OF COPIES RECEIVED	
DISTRIBUTION	
SANTA FE	
FILE	
U.S.G.S.	
LAND OFFICE	
OPERATOR	

5A. Indicate Type of Lease  
STATE ☒ FEE ☐  
5. State Oil & Gas Lease No.  
V-398

APPLICATION FOR PERMIT TO DRILL, DEEPEN, OR PLUG BACK

1a. Type of Work b. Type of Well OIL WELL <input checked="" type="checkbox"/> GAS WELL <input type="checkbox"/> OTHER <input type="checkbox"/> SINGLE ZONE <input checked="" type="checkbox"/> MULTIPLE ZONE <input type="checkbox"/>		7. Unit Agreement Name	
2. Name of Operator Texaco Inc.		8. Farm or Lease Name New Mexico "DX" St. TN	
3. Address of Operator P. O. Box 728, Hobbs, New Mexico 88240		9. Well No. 1	
4. Location of Well UNIT LETTER <u>K</u> LOCATED <u>1980</u> FEET FROM THE <u>South</u> LINE AND <u>1980</u> FEET FROM THE <u>West</u> LINE OF SEC. <u>17</u> TWP. <u>22-S</u> RGE. <u>35-E</u> NMPM		10. Field and Pool, or Wildcat *See Below	
11. Elevations (Show whether DF, RT, etc.) 3567 GR		12. County Lea	
21A. Kind & Status Plug. Bond Blanket		19. Proposed Depth 12,000'	
21B. Drilling Contractor		19A. Formation Bone Springs, Wolfcamp Rotary	
22. Approx. Date Work will start April 6, 1988		20. Rotary or C.T.	

PROPOSED CASING AND CEMENT PROGRAM

SIZE OF HOLE	SIZE OF CASING	WEIGHT PER FOOT	SETTING DEPTH	SACKS OF CEMENT	EST. TOP
24"	20"	94#	40'	Redimix	Surface
17-1/2"	13-3/8"	43#	400'	475	Surface
12-1/4"	9-5/8"	40#	5700'	2150	Surface
8-3/4"	7"	23# & 26#	11,000'	1350	Surface
6-1/8"	5"	15#	10,500'-12,000'	200	Top of Liner

\*Undes. San Simon Wolfcamp, Wildcat Bone Springs

CEMENTING PROGRAM

SURFACE CASING: 475 sacks Class "H" & 2% CaCl & 1/4#/sack Flocele (15.6 ppg, 1.13 cu. ft./s. 5.2 gallons water/sack).

INTERMEDIATE CASING: 450 sacks Light Weight & 10#/sack Gilsonite & 1/4#/sack Flocele (1st Stage) (12.7 ppg, 1.84 cu. ft./sx., 9.9 gallons water/sack) and 250 sacks Class "H" & 1/4#/sack Flocele (15.6 ppg, 1.13 cu. ft./sx., 5.2 gallon water/sack).

(2nd Stage) 1200 sacks Light Weight & 18% Salt & 10#/sack Gilsonite (12.7 ppg, 2.21 cu. ft./sx., 10.9 gallons water/sack) plus 250 sacks Class "H" & 1/4#/sack Flocele (15.6 ppg, 1.13 cu. ft./sx., 5.2 gallons water/sa DV Tool @ 4000'.

Continued on Page 2

IN ABOVE SPACE DESCRIBE PROPOSED PROGRAM: IF PROPOSAL IS TO DEEPEN OR PLUG BACK, GIVE DATA ON PRESENT PRODUCTIVE ZONE AND PROPOSED NEW PRODUCTIVE ZONE. GIVE BLOWOUT PREVENTER PROGRAM, IF ANY.

I hereby certify that the information above is true and complete to the best of my knowledge and belief.

Signed W. B. Cade Title District Operations Manager Date 3/30/88

(This space for State Use)

ORIGINAL SIGNED BY JERRY SEXTON

APPROVED BY DISTRICT 1 SUPERVISOR

TITLE

DATE APR 1 1988

CONDITIONS OF APPROVAL, IF ANY:

Permit Expires 6 Months From Approval  
Date Unless Drilling Underway.

RECEIVED  
MAR 31 1989  
SEC  
OFFICE

NEW MEXICO "DX" STATE TN  
WELL NO. 1  
UNDES. SAN SIMON WOLFCAMP, WILDCAT BONE SPRINGS  
LEA COUNTY, NEW MEXICO

Continuation to Form C-101

CEMENTING PROGRAM: Continued

INTERMEDIATE CASING OR LINER:

1st Stage: 575 sacks Class "H" & 1/4#/sack Flocele & .2% HR-4, & .4% Halad-9 (15.6 ppg, 1.18 cu. ft./sx., 5.2 gallon water/sack)

2nd Stage: 775 sacks Light Weight & 1/4#/sack Flocele (12.4 ppg, 1.97 cu. ft./sx., 10.9 gallon water/sack). DV Tool @ 8000'.

PRODUCTION CASING OR LINER:

200 sacks Class "H" & 1/4#/sack Flocele, .2% HR-4, Halad-9 (15.6 ppg, 1.18 cu. ft./sx., 5.2 gallons water/sack).

There are no other wells in this 1/4, 1/4 section.

RECEIVED  
MAR 31 1988  
OCCD  
HOBBS OFFICE

All distances must be from the outer boundaries of the Section.

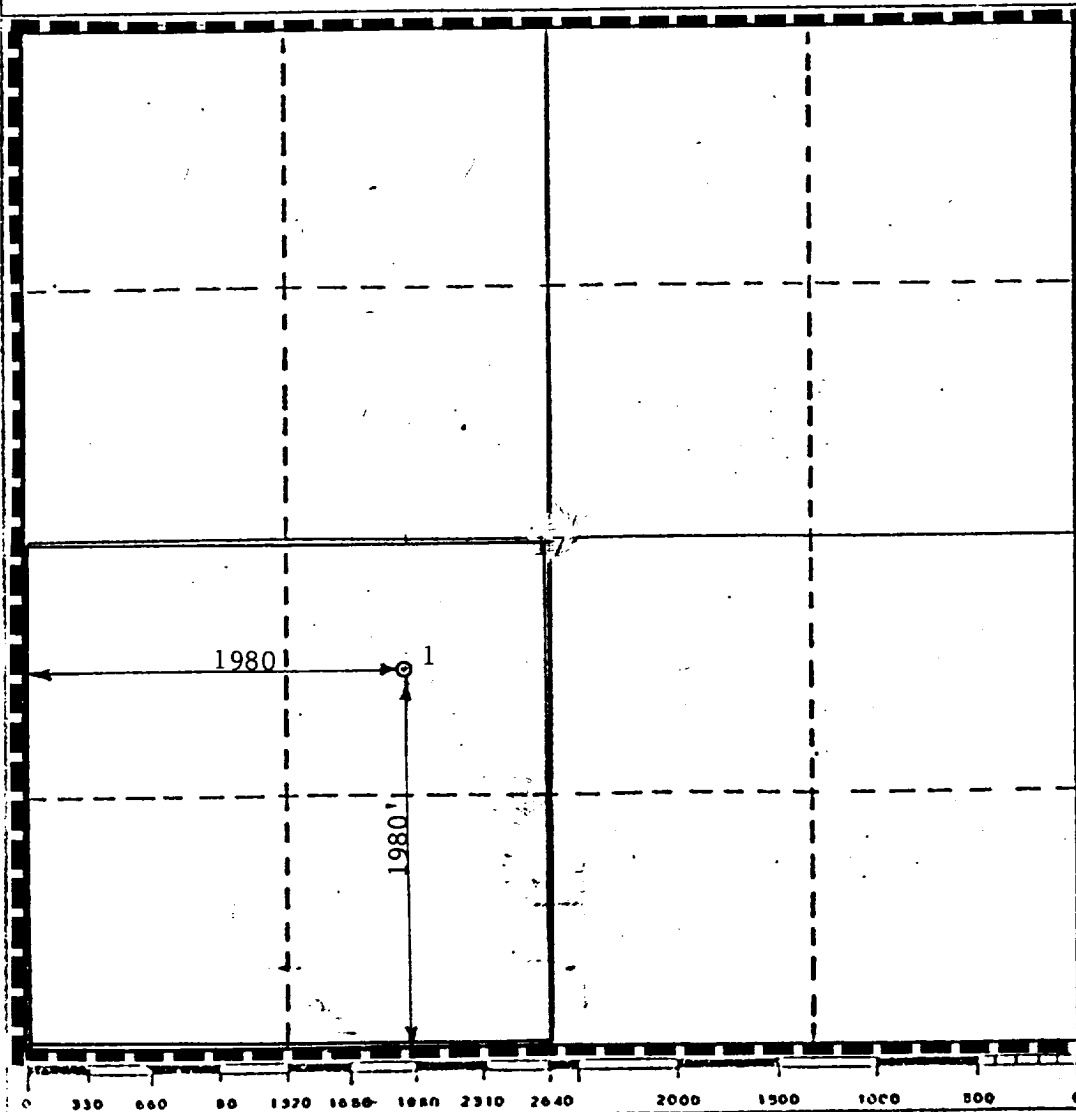
Operator <b>TEXACO INC.</b>		Lease <b>New Mexico "DX" State TN</b>		Well No. <b>1</b>
Unit Letter <b>K</b>	Section <b>17</b>	Township <b>22-S</b>	Range <b>35-E</b>	County <b>Lea</b>
Actual Postage Location of Well: <b>1980</b> feet from the <b>South</b> line and <b>1980</b> feet from the <b>West</b> line				
Ground Level Elev. <b>3567'</b>	Producing Formation <b>Wolfcamp</b>	Pool <b>Undes. San Simon Wolfcamp</b>	Dedicated Acreage: <b>160</b> Acres	

1. Outline the acreage dedicated to the subject well by colored pencil or hatchure marks on the plat below.
2. If more than one lease is dedicated to the well, outline each and identify the ownership thereof (both as to working interest and royalty).
3. If more than one lease of different ownership is dedicated to the well, have the interests of all owners been consolidated by communitization, unitization, force-pooling, etc?

☐ Yes ☐ No If answer is "yes," type of consolidation \_\_\_\_\_

If answer is "no," list the owners and tract descriptions which have actually been consolidated. (Use reverse side of this form if necessary.) \_\_\_\_\_

No allowable will be assigned to the well until all interests have been consolidated (by communitization, unitization, forced-pooling, or otherwise) or until a non-standard unit, eliminating such interests, has been approved by the Division.



CERTIFICATION

I hereby certify that the information contained herein is true and complete to the best of my knowledge and belief.

*B. L. Eiland*

Name

**B.L. Eiland**

Position

**Division Surveyor**

Company

**Texaco Inc.**

Date

**March 24, 1988**

I hereby certify that the well location shown on this plat was plotted from field notes of actual surveys made by me or under my supervision, and that the same is true and correct to the best of my knowledge and belief.

Date Surveyed **NEW**

**March 23, 1988**

Registered Professional Engineer

and/or Land Surveyor

*B. L. Eiland*

Certificate No. **4386**

All distances must be from the outer boundaries of the Section.

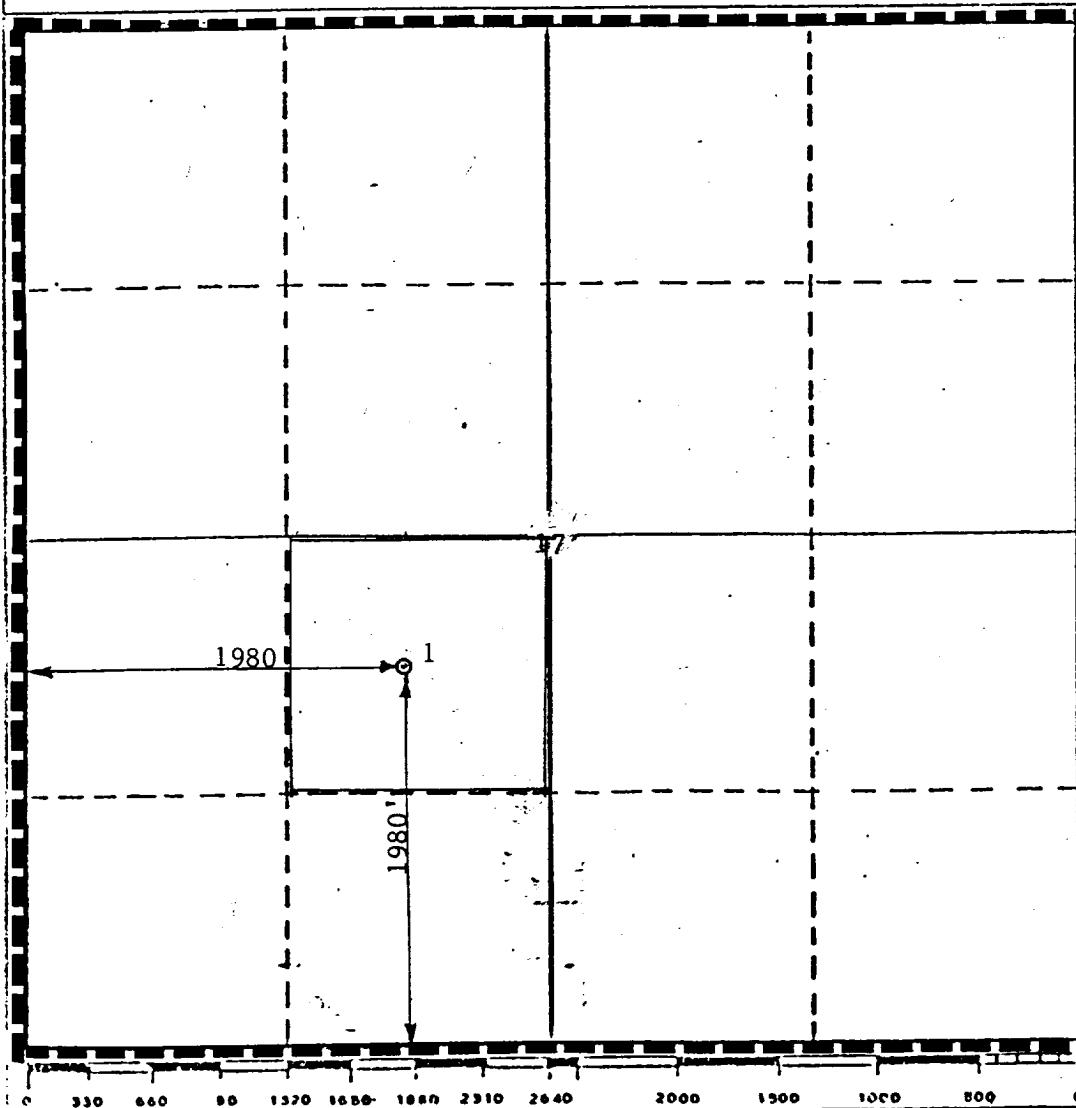
Operator <b>TEXACO INC.</b>		Lease <b>New Mexico "DX" State TN</b>		Well No. <b>1</b>
Unit Letter <b>K</b>	Section <b>17</b>	Township <b>22-S</b>	Range <b>35-E</b>	County <b>Lea</b>
Actual Footage Location of Well: <b>1980</b> feet from the <b>South</b> line and <b>1980</b> feet from the <b>West</b> line				
Ground Level Elev. <b>3567'</b>	Producing Formation <b>Bone Springs</b>	Pool <b>Wildcap</b>	Dedicated Acreage: <b>40</b> Acres	

1. Outline the acreage dedicated to the subject well by colored pencil or hatchure marks on the plat below.
2. If more than one lease is dedicated to the well, outline each and identify the ownership thereof (both as to working interest and royalty).
3. If more than one lease of different ownership is dedicated to the well, have the interests of all owners been consolidated by communitization, unitization, force-pooling, etc?

☐ Yes ☐ No If answer is "yes," type of consolidation \_\_\_\_\_

If answer is "no," list the owners and tract descriptions which have actually been consolidated. (Use reverse side of this form if necessary.) \_\_\_\_\_

No allowable will be assigned to the well until all interests have been consolidated (by communitization, unitization, forced-pooling, or otherwise) or until a non-standard unit, eliminating such interests, has been approved by the Division.



CERTIFICATION

I hereby certify that the information contained herein is true and complete to the best of my knowledge and belief.

*B. L. Eiland*

Name

**B.L. Eiland**

Position

**Division Surveyor**

Company

**Texaco Inc.**

Date

**March 24, 1988**

I hereby certify that the well location shown on this plat was plotted from field notes of actual surveys made by me or under my supervision, and that the same is true and correct to the best of my knowledge and belief.

Date Surveyed **EW**

**March 23, 1988**

Registered Professional Engineer and/or Land Surveyor

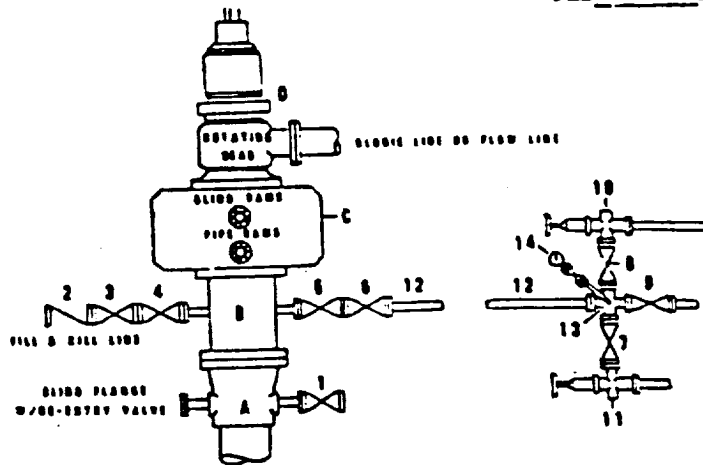
*B. L. Eiland*

Certificate No.

**4386**

**DRILLING CONTROL**  
**CONDITION II-B 3000 WP**  
**FOR AIR DRILLING OR**  
**WHERE YATES AIR BLOWS ARE EXPECTED**

H<sub>2</sub>S TRIM REQUIRED  
 YES \_\_\_\_\_ NO \_\_\_\_\_



**DRILLING CONTROL**

**MATERIAL LIST - CONDITION II - B**  
**FOR AIR DRILLING**

- A      Texaco Wellhead
- B      3000# W.P. drilling spool with a 2" minimum flanged outlet for kill-line and 3" minimum flanged outlet for choke line
- C      3000# W.P. Dual ram type preventer, hydraulic operated with 1" steel, 3000# W.P. control lines (where sub-structure height is adequate, 2-3000# W.P. single ram type preventers may be utilized.)
- D      Rotating Head and extended Elastic Line.
- 1,3,4, 7,8      2" minimum 3000# W.P. flanged full opening steel gate valve, or Halliburton Lo Torc Plug valve.
- 2      2" minimum 3000# W.P. back pressure valve
- 5,6,9      3" minimum 3000# W.P. flanged full opening steel gate valve, or Halliburton Lo Torc Plug valve.
- 12      3" minimum schedule 80, Grade "B", seamless line pipe
- 13      2" minimum x 3" minimum 3000# W.P. flanged cross
- 10, 11      2" minimum 3000# W.P. adjustable choke bodies
- 14      Cameron Mud Gauge or equivalent (location optional in choke line.)



**TEXACO, INC.**  
 MIDLAND DIVISION  
 MIDLAND, TEXAS



SCALE	DATE	EST. NO.	DWG. NO.
DRAWN BY			
CHECKED BY			
APPROVED BY			

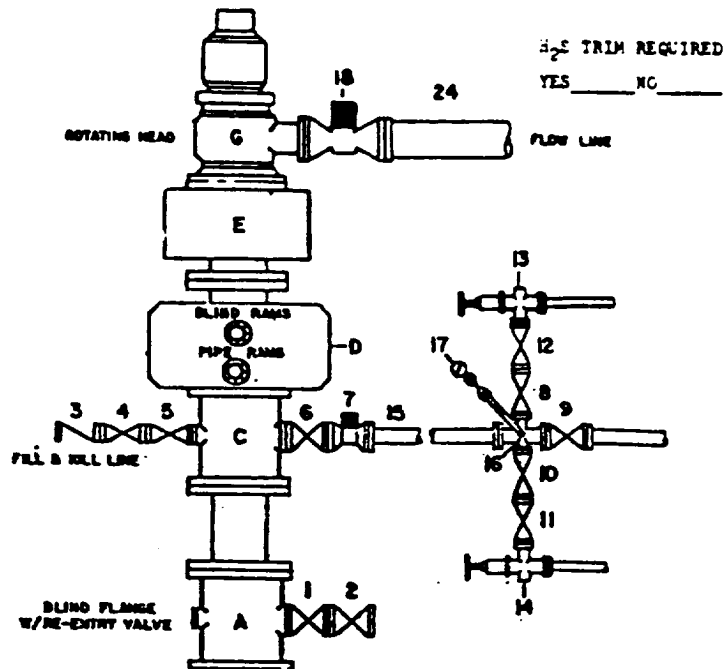
**EXHIBIT C**

**RECEIVED**

MAR 31 1988  
CCD  
HOBBY OFFICE



# **DRILLING CONTROL** **CONDITION IV-B-5000 PSI WP**



## DRILLING CONTROL

### MATERIAL LIST - CONDITION IV-B

- |                      |  |
|----------------------|--|
| A                    | Texaco Wellhead  |
| C                    | 50000 W.P. Drilling Spool with a minimum 2" flanged outlet for kill line and 3" minimum flanged outlet for choke line. |
| D                    | 50000 W.P. Dual Ram Type preventer, hydraulic operated with 1" steel, 50000 W.P. control lines                         |
| E                    | 50000 W.P. Annular Preventer, hydraulic operated with 1" steel, 50000 W.P. control lines                               |
| F                    | Bell Nipple with flowline and fill-up outlets (kill line may also be used for fill-up line).                           |
| 1,2,4,5, 8,10,11, 12 | 2" minimum 50000 W.P. flanged full opening steel gate valve or Halliburton Lo Torc plug valve                          |
| 3                    | 2" minimum 50000 W.P. back pressure valve  |
| 6,9                  | 3" minimum 50000 W.P. flanged full opening steel gate valve, or Halliburton Lo Torc Plug valve                         |
| 7                    | 3" minimum 50000 W.P. flanged hydraulic valve  |
| 13                   | 3" minimum Schedule 160, Grade B, seamless line pipe   |
| 16                   | 2" minimum x 3" minimum 50000 W.P. flanged cross   |
| 13,14                | 2" minimum 50000 W.P. adjustable chokes with carbide trim  |
| 17                   | Cameron Mud Gauge or equivalent (location in choke line optional.)   |
| 18                   | 2" minimum 10000 hydraulic flanged valve   |
| 24                   | 2" minimum steel flow line   |



**TEXACO, INC.**  
 MIDLAND DIVISION  
 MIDLAND, TEXAS



SCALE:	DATE	EST. NO.	ORD. NO.
DRAWN BY:			
CHECKED BY:			
APPROVED BY:			

**EXHIBIT F**