

OIL CONSERVATION DIVISION

STATE OF NEW MEXICO
ENERGY AND MINERALS DEPARTMENTP. O. BOX 2088
SANTA FE, NEW MEXICO 87501Form C-102
Revised 10-1-78

All distances must be from the outer boundaries of the Section.

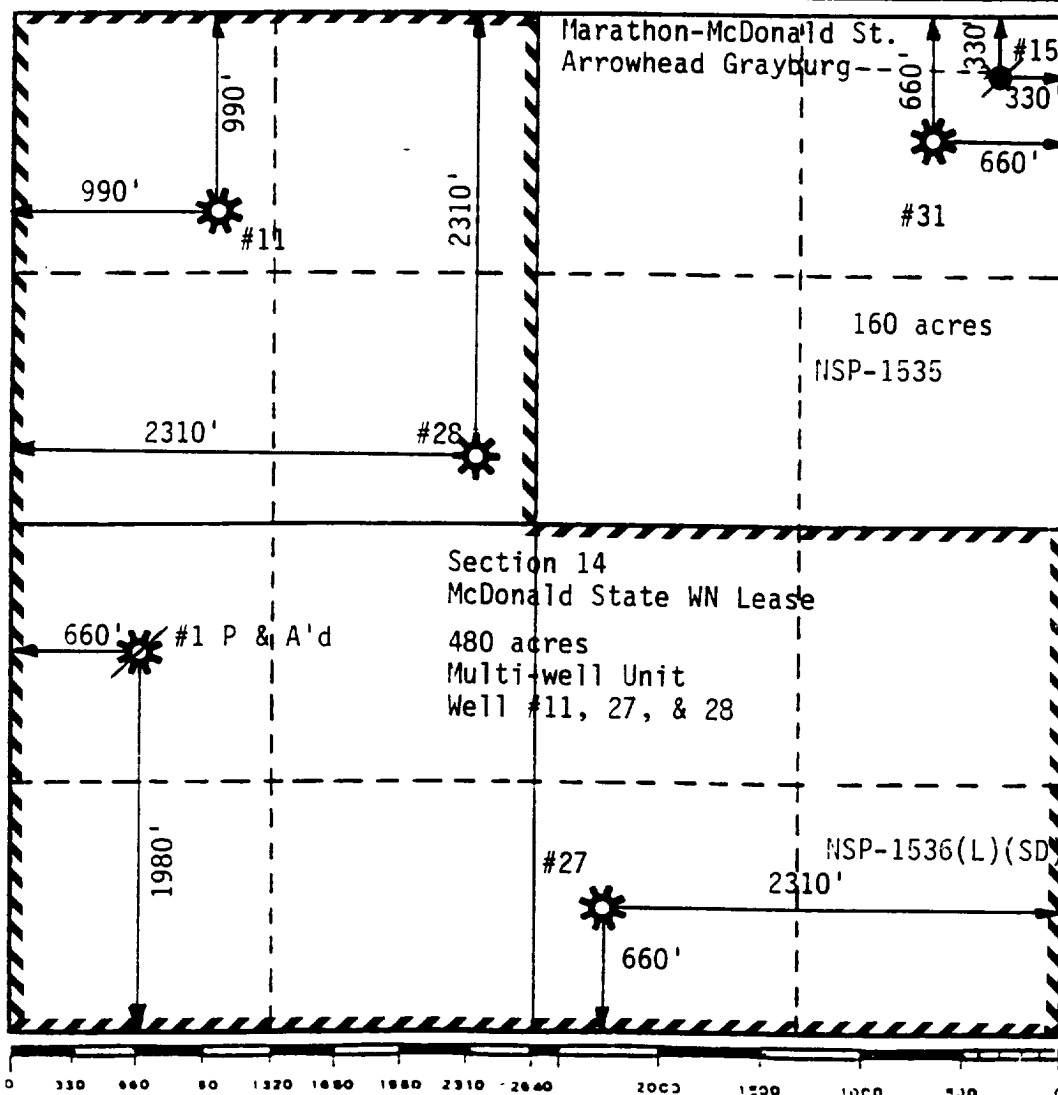
Operator ARCO Oil and Gas Company			Lease McDonald State WN		Well No. 11, 27, 28
Unit Letter D, F, O	Section 14	Township 22S	Range 36E	County Lea	
Actual Footage Location of Well: #11: 990' FNL & 990' FWL; #27: 660' FSL & 2310' FEL; #28: 2310' FNL & 2310' FWL					
Ground Level Elev.		Producing Formation Yates/Seven Rivers		Pool Jalmat Gas	Dedicated Acreage 480 Acres

1. Outline the acreage dedicated to the subject well by colored pencil or hachure marks on the plat below.
2. If more than one lease is dedicated to the well, outline each and identify the ownership thereof (both as to working interest and royalty).
3. If more than one lease of different ownership is dedicated to the well, have the interests of all owners been consolidated by communitization, unitization, force-pooling, etc?

☐ Yes ☐ No If answer is "yes," type of consolidation _____

If answer is "no," list the owners and tract descriptions which have actually been consolidated. (Use reverse side of this form if necessary.) _____

No allowable will be assigned to the well until all interests have been consolidated (by communitization, unitization, forced-pooling, or otherwise) or until a non-standard unit, eliminating such interests, has been approved by the Division.



CERTIFICATION

I hereby certify that the information contained herein is true and complete to the best of my knowledge and belief.

Cindy W. Ellis
Name
Cindy W. Ellis
Position
Senior Engineer
Company
ARCO Oil and Gas Company

Date
April 21, 1988

I hereby certify that the well location shown on this plat was plotted from field notes of actual surveys made by me or under my supervision, and that the same is true and correct to the best of my knowledge and belief.

Date Surveyed

Registered Professional Engineer
and/or Land Surveyor

Certificate No.