

Submit to Appropriate  
District Office  
State Lease -- 6 copies  
Fee Lease -- 5 copies

State of New Mexico  
Energy, Minerals and Natural Resources Department

Form C-101  
Revised 1-1-89

OIL CONSERVATION DIVISION

P.O. Box 2088  
Santa Fe, New Mexico 87504-2088

DISTRICT I  
P.O. Box 1980, Hobbs, NM 88240

DISTRICT II  
P.O. Drawer DD, Artesia, NM 88210

DISTRICT III  
1000 Rio Brazos Rd., Aztec, NM 87410

API NO. (assigned by OCD on New Wells)

30-025-30863

5. Indicate Type of Lease

STATE ☐

FEE ☒

6. State Oil & Gas Lease No.

APPLICATION FOR PERMIT TO DRILL, DEEPEN, OR PLUG BACK

1a. Type of Work:

DRILL ☒

RE-ENTER ☐

DEEPEN ☐

PLUG BACK ☐

b. Type of Well:

OIL  
WELL ☒

GAS  
WELL ☐

OTHER ☐

SINGLE  
ZONE ☒

MULTIPLE  
ZONE ☐

2. Name of Operator

TEXACO INC.

3. Address of Operator

P. O. Box 3109, Midland, Texas 79702

8. Well No.

14

9. Pool name or Wildcat

\* SEE BLEOW

4. Well Location

Unit Letter A : 820 Feet From The NORTH Line and 410 Feet From The EAST Line

Section 14

Township 20-SOUTH

Range 37-EAST

NMPM LEA

County

10. Proposed Depth

7200'

11. Formation

\* SEE BELOW

12. Rotary or C.T.

ROTARY

13. Elevations (Show whether DF, RT, GR, etc.)

GR-3550'

14. Kind & Status Plug. Bond

BLANKET

15. Drilling Contractor

16. Approx. Date Work will start

04-16-90

17.

PROPOSED CASING AND CEMENT PROGRAM

SIZE OF HOLE	SIZE OF CASING	WEIGHT PER FOOT	SETTING DEPTH	SACKS OF CEMENT	EST. TOP
20	16	94#	40'	REDIMIX	SURFACE
14 3/4	11 3/4	42#	1420'	950	SURFACE
11	8 5/8	32#	4000'	1000	SURFACE
7 7/8	5 1/2	15.5#	7200'	1300	SURFACE

\* SKAGGS GLORIETA, WEIR BLINEBRY, SKAGGS DRINKARD

CEMENTING PROGRAM: CONDUCTOR - REDIMIX

SURFACE CSG. - 700 SX CLASS H w/ 2% GEL & 2% Cacl2 (14.8ppg, 1.38f3/s, 6.5gw/s). F/B 250 SX CLASS H w/ 2% Cacl2 (15.6ppg, 1.19f3/s, 5.2gw/s).

INTERMEDIATE CSG. - 750 SX 35/65 POZ CLASS H w/ 6% GEL & 5% SALT (12.8ppg, 1.87f3/s, 9.9gw/s). F/B 250 SX CLASS H w/ 2% Cacl2 (15.6ppg, 1.19f3/s, 5.2gw/s).

PRODUCTION CSG. - 550 SX 50/50 POZ CLASS H w/2% GEL, 5% SALT & 1/4# FLOCELE (14.2ppg, 1.28f3/s, 5.75gw/s).

DV TOOL AT 5000' - 500 SX 35/65 POZ CLASS H w/ 6% GEL & 5% SALT (12.8ppg, 1.87f3/s, 9.9gw/s). F/B 250 SX CLASS H (15.6ppg, 1.18f3/s, 5.2gw/s).

THERE ARE NO ACTIVE OPERATORS IN THE QUARTER QUARTER SECTION.

IN ABOVE SPACE DESCRIBE PROPOSED PROGRAM: IF PROPOSAL IS TO DEEPEN OR PLUG BACK, GIVE DATA ON PRESENT PRODUCTIVE ZONE AND PROPOSED NEW PRODUCTIVE ZONE. GIVE BLOWOUT PREVENTER PROGRAM, IF ANY.

I hereby certify that the information above is true and complete to the best of my knowledge and belief.

SIGNATURE C. Wade Howard TITLE ENGINEER'S ASSISTANT DATE 04-04-90

TYPE OR PRINT NAME C. WADE HOWARD

TELEPHONE NO. 915-688-4606

(This space for State Use)

APR 6 1990

APPROVED BY ORIGINAL SIGNED BY JERRY SEXTON TITLE DISTRICT DATE

CONDITIONS OF APPROVAL, IF ANY:

Submit to Appropriate  
District Office  
State Lease - 4 copies  
Fee Lease - 3 copies

State of New Mexico  
Energy, Minerals and Natural Resources Department

Form C-102  
Revised 1-1-89

OIL CONSERVATION DIVISION

DISTRICT I  
P.O. Box 1980, Hobbs, NM 88240

P.O. Box 2088

Santa Fe, New Mexico 87504-2088

DISTRICT II  
P.O. Drawer DD, Artesia, NM 88210

DISTRICT III  
1000 Rio Brazos Rd., Aztec, NM 87410

WELL LOCATION AND ACREAGE DEDICATION PLAT

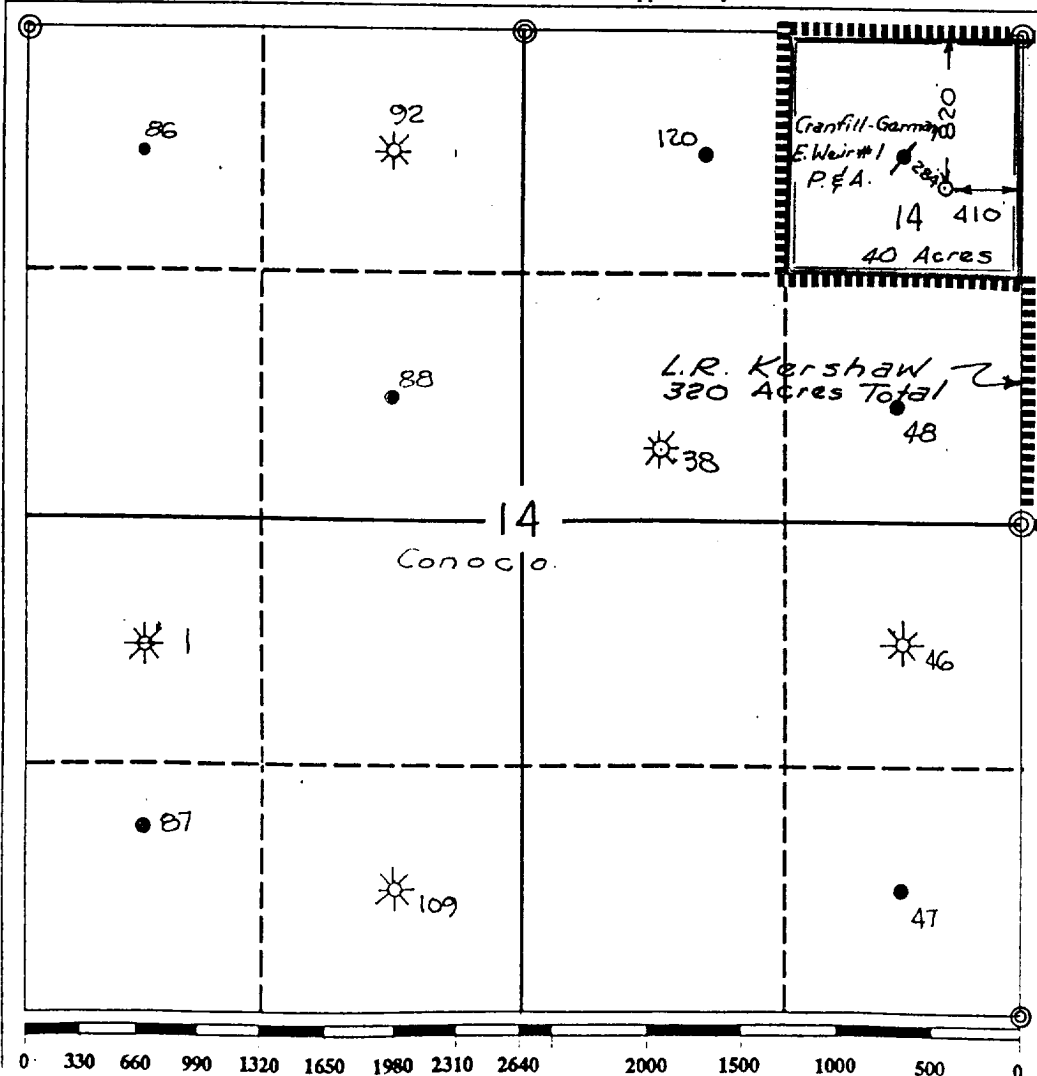
All Distances must be from the outer boundaries of the section

Operator TEXACO INC.			Lease L. R. Kershaw		Well No. 14
Unit Letter A	Section 14	Township 20-South	Range 37- East	County Lea	

Actual Footage Location of Well:

820 feet from the North line and 410 feet from the East line  
Ground level Elev. 3550  
Producing Formation Glorieta; Pool Skaggs Glorieta;  
Blinebry; Drinkard Weir Blinebry; Skaggs Drinkard Dedicated Acreage: 40.00 Acres

1. Outline the acreage dedicated to the subject well by colored pencil or hachure marks on the plat below.
2. If more than one lease is dedicated to the well, outline each and identify the ownership thereof (both as to working interest and royalty).
3. If more than one lease of different ownership is dedicated to the well, have the interest of all owners been consolidated by communitization, unitization, force-pooling, etc.?  
☐ Yes ☐ No If answer is "yes" type of consolidation \_\_\_\_\_  
If answer is "no" list the owners and tract descriptions which have actually been consolidated. (Use reverse side of this form if necessary).  
No allowable will be assigned to the well until all interests have been consolidated (by communitization, unitization, forced-pooling, or otherwise) or until a non-standard unit, eliminating such interest, has been approved by the Division.



OPERATOR CERTIFICATION

I hereby certify that the information contained herein is true and complete to the best of my knowledge and belief.

Signature  
Royce D. Mariott  
Printed Name  
Royce D. Mariott  
Position  
Division Surveyor  
Company  
Texaco Inc.  
Date  
March 29, 1990

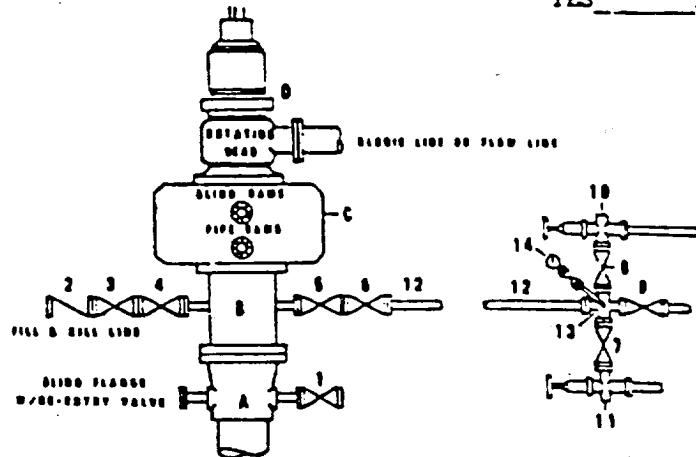
SURVEYOR CERTIFICATION

I hereby certify that the well location shown on this plat was plotted from field notes of actual surveys made by me or under my supervision, and that the same is true and correct to the best of my knowledge and belief.

Date Surveyed  
March 14, 1990  
Signature & Seal of Professional Surveyor  
John S. Piper  
Certificate No.  
7254 John S. Piper

**DRILLING CONTROL**  
**CONDITION II-B 3000 WP**  
**FOR AIR DRILLING OR**  
**WHERE YATES AIR BLOWS ARE EXPECTED**

H<sub>2</sub>S TRIM REQUIRED  
 YES \_\_\_\_\_ NO \_\_\_\_\_



**DRILLING CONTROL**

**MATERIAL LIST - CONDITION II - B**  
**FOR AIR DRILLING**

- A Texaco Wellhead
- B 3000# W.P. drilling spool with a 2" minimum flanged outlet for kill-line and 3" minimum flanged outlet for choke line
- C 3000# W.P. Dual ram type preventer, hydraulic operated with 1" steel, 3000# W.P. control lines (where sub-structure height is adequate, 2-3000# W.P. single ram type preventers may be utilized.)
- D Rotating Head and extended Blosie Line.
- 1,3,4, 7,8 2" minimum 3000# W.P. flanged full opening steel gate valve, or Halliburton Lo Torc Plug valve.
- 2 2" minimum 3000# W.P. back pressure valve
- 5,6,9 3" minimum 3000# W.P. flanged full opening steel gate valve, or Halliburton Lo Torc Plug valve.
- 12 3" minimum schedule 80, Grade "B", seamless line pipe
- 13 2" minimum x 3" minimum 3000# W.P. flanged cross
- 10, 11 2" minimum 3000# W.P. adjustable choke bodies
- 14 Cameron Mud Gauge or equivalent (location optional in choke line.)



TEXACO, INC.  
 HOLLAND DIVISION  
 HOLLAND, TEXAS



SCALE	DATE	EST NO	DRG NO
DRAWN BY			
CHECKED BY			
APPROVED BY			

EXHIBIT C

Rec'd 7-18-90

ELF

RECEIVED

APR 5 1990

CCO  
HOLLYWOOD