

Submit to Appropriate
District Office
State Lease - 6 copies
Fee Lease - 5 copies

State of New Mexico
Energy, Minerals and Natural Resources Department

Form C-101
Revised 1-1-89

OIL CONSERVATION DIVISION

DISTRICT I
P.O. Box 1980, Hobbs, NM 88240

P.O. Box 2088
Santa Fe, New Mexico 87504-2088

DISTRICT II
P.O. Drawer DD, Artesia, NM 88210

DISTRICT III
1000 Rio Brazos Rd., Aztec, NM 87410

API NO. (assigned by OCD on New Wells)

30-025-30894

5. Indicate Type of Lease

STATE ☒

FEE ☐

6. State Oil & Gas Lease No.

B-160-1

APPLICATION FOR PERMIT TO DRILL, DEEPEN, OR PLUG BACK

1a. Type of Work:

DRILL ☒

RE-ENTER ☐

DEEPEN ☐

PLUG BACK ☐

b. Type of Well:

OIL
WELL ☐

GAS
WELL ☒

OTHER

SINGLE
ZONE ☒

MULTIPLE
ZONE ☐

7. Lease Name or Unit Agreement Name

NEW MEXICO -H- STATE NCT-2

2. Name of Operator

TEXACO PRODUCING INC.

8. Well No.

32

3. Address of Operator

P. O. Box 3109, Midland, Texas 79702

9. Pool name or Wildcat

EUMONT YATES 7 RIVERS (PRO GAS)

4. Well Location

Unit Letter N : 990 Feet From The SOUTH Line and 1980 Feet From The WEST Line

Section 20 Township 20-SOUTH Range 37-EAST NMPM LEA County

10. Proposed Depth

3630'

11. Formation

PENROSE

12. Rotary or C.T.

ROTARY

13. Elevations (Show whether DF, RT, GR, etc.)

GR-3518'

14. Kind & Status Plug. Bond

BLANKET

15. Drilling Contractor

16. Approx. Date Work will start

06-15-90

17. PROPOSED CASING AND CEMENT PROGRAM

SIZE OF HOLE	SIZE OF CASING	WEIGHT PER FOOT	SETTING DEPTH	SACKS OF CEMENT	EST. TOP
17 1/2	13 3/8	48#	40'	REDI-MIX	SURFACE
12 1/4	8 5/8	24#	1150'	700	SURFACE
7 7/8	5 1/2	15.5#	3630'	750	SURFACE

CEMENTING PROGRAM: CONDUCTOR - REDI-MIX.

8 5/8 in. CASING - 500 SX CLASS H WITH 2% GEL & 2% CaCl₂ (14.8ppg, 1.38f3/s, 6.5gw/s). F/B 200 SX CLASS H WITH 2% CaCl₂ (15.6ppg, 1.19f3/s, 5.2gw/s).

5 1/2 in. CASING - 500 SX 35/65 POZ CLASS H WITH 6% GEL & 5% SALT (12.8ppg, 1.87f3/s, 9.9gw/s). F/B 250 SX CLASS H (15.6ppg, 1.18f3/s, 5.2gw/s).

GREENHILL PETROLEUM OPERATES A WELL IN THIS 1/4 1/4 SECTION AND THEY HAVE BEEN FURNISHED A COPY OF THIS APPLICATION.

NON-STANDARD GAS PRORATION UNIT - ORDER NO. NSP-1302.

IN ABOVE SPACE DESCRIBE PROPOSED PROGRAM: IF PROPOSAL IS TO DEEPEN OR PLUG BACK, GIVE DATA ON PRESENT PRODUCTIVE ZONE AND PROPOSED NEW PRODUCTIVE ZONE. GIVE BLOWOUT PREVENTER PROGRAM, IF ANY.

I hereby certify that the information above is true and complete to the best of my knowledge and belief.

SIGNATURE C. Wade Howard TITLE ENGINEERING ASSISTANT DATE 04-26-90

TYPE OR PRINT NAME C. W. HOWARD

TELEPHONE NO. 915-688-4606

(This space for State Use)

ORIGINAL SIGNED BY JERRY DEXTON

APPROVED BY DISTRICT I SUPERVISOR TITLE _____ DATE _____

CONDITIONS OF APPROVAL, IF ANY:

Permit Expires 6 Months From Approval
Date Unless Drilling Underway.

MAY 1 1990

**NEW MEXICO OIL CONSERVATION COMMISSION
WELL LOCATION AND ACREAGE DEDICATION PLAT**

Form C-102
Supersedes C-128
Effective 1-1-65

All distances must be from the outer boundaries of the Section.

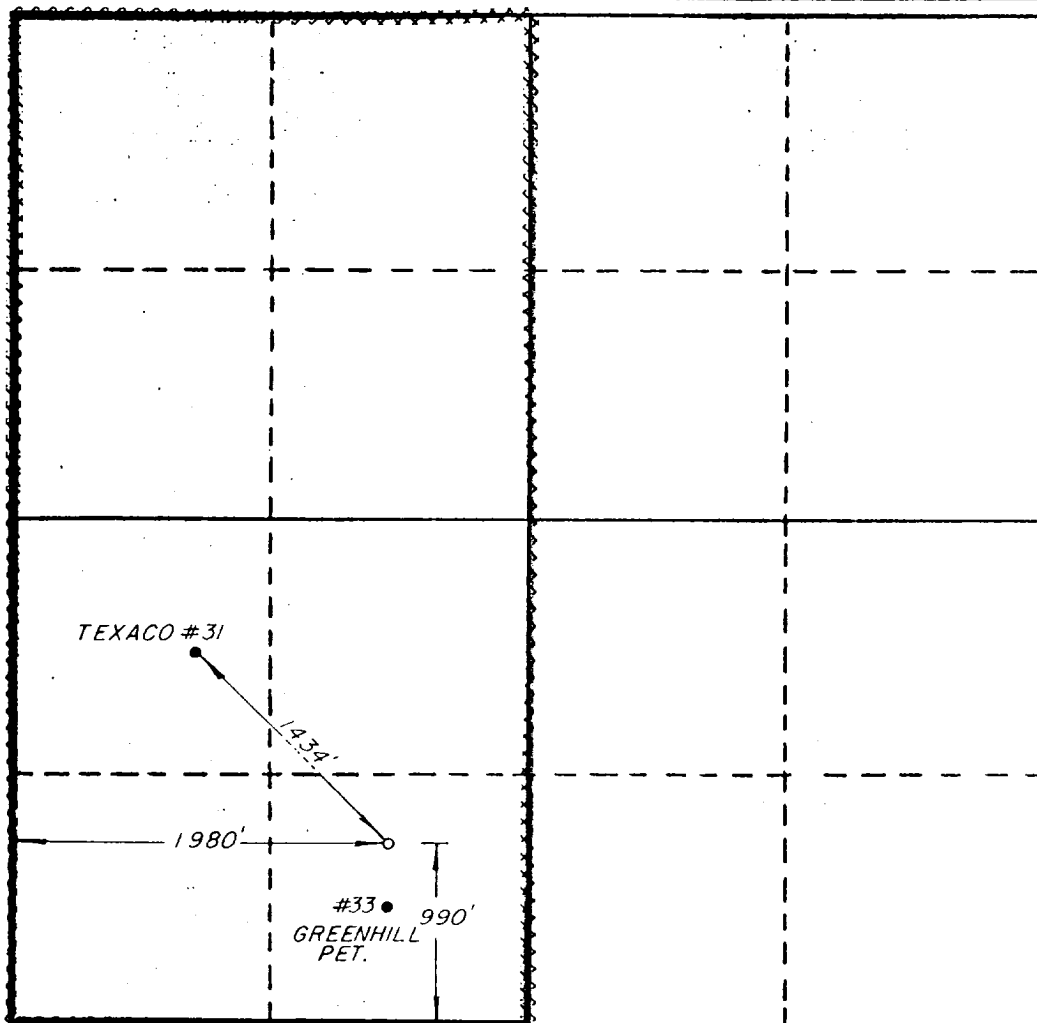
Operator TEXACO PRODUCING INC.			Lease New Mexico "H" State NCT 2		Well No. 32
Unit Letter N	Section 20	Township 20-South	Range 37-East	County Lea	
Actual Footage Location of Well: <div style="display: flex; justify-content: space-between; align-items: center;"> 990 feet from the South line and 1980 feet from the West line </div>					
Ground Level Elev. 3518'	Producing Formation Penrose	Pool Eumont Yates 7 Rvrs on Gas		Dedicated Acreage: 320 Acres	

1. Outline the acreage dedicated to the subject well by colored pencil or hachure marks on the plat below.
2. If more than one lease is dedicated to the well, outline each and identify the ownership thereof (both as to working interest and royalty).
3. If more than one lease of different ownership is dedicated to the well, have the interests of all owners been consolidated by communization, unitization, force-pooling, etc?

☐ Yes ☐ No If answer is "yes," type of consolidation _____

If answer is "no," list the owners and tract descriptions which have actually been consolidated. (Use reverse side of this form if necessary.) _____

No allowable will be assigned to the well until all interests have been consolidated (by communization, unitization, forced-pooling, or otherwise) or until a non-standard unit, eliminating such interests, has been approved by the Commission.



CERTIFICATION

I hereby certify that the information contained herein is true and complete to the best of my knowledge and belief.

R. D. Mariott

Name
R. D. Mariott

Position
Division Surveyor

Company
Texaco Producing Inc.

Date
February 27, 1990

I hereby certify that the well location shown on this plat was plotted from field notes of actual surveys made by me or under my supervision, and that the same is true and correct to the best of my knowledge and belief.

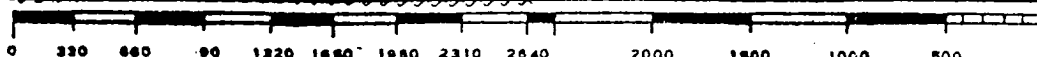
February 27, 1990

Date Surveyed
Richard B. Duniven

Registered Professional Engineer and/or Land Surveyor

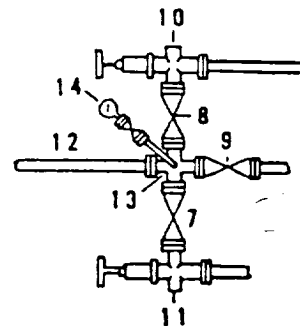
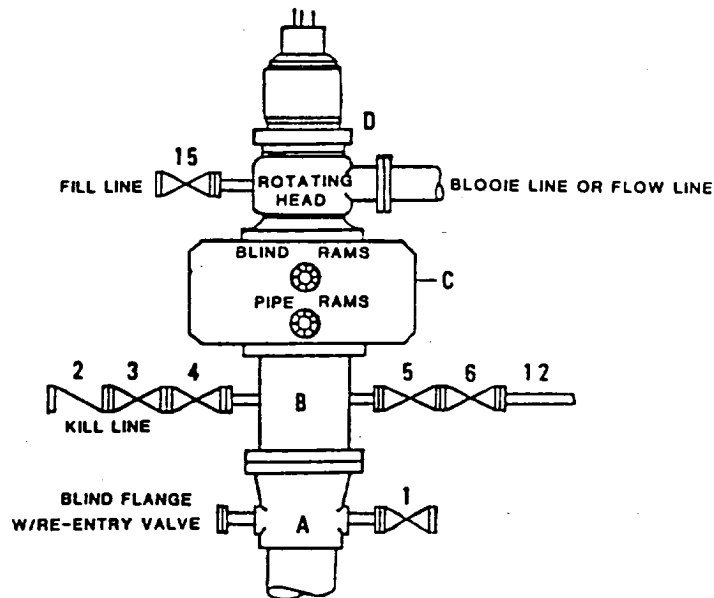
Richard B. Duniven

Certificate No.
4882



**DRILLING CONTROL
CONDITION II-B 3000 WP
FOR AIR DRILLING OR
WHERE NITROGEN OR AIR BLOWS ARE EXPECTED**

H₂S TRIM REQUIRED
YES _____ NO _____



DRILLING CONTROL

MATERIAL LIST - CONDITION II - B

- | | |
|----------------|---|
| A | Texaco Wellhead |
| B | 3000# W.P. drilling spool with a 2" minimum flanged outlet for kill line and 3" minimum flanged outlet for choke line. |
| C | 3000# W.P. Dual ram type preventer, hydraulic operated with 1" steel, 3000# W.P. control lines (where sub-structure height is adequate, 2 - 3000# W.P. single ram type preventers may be utilized). |
| D | Rotating Head with fill up outlet and extended Blooe Line. |
| 1,3,4,
7,8, | 2" minimum 3000# W.P. flanged full opening steel gate valve, or Halliburton Lo Torc Plug valve. |
| 2 | 2" minimum 3000# W.P. back pressure valve. |
| 5,6,9 | 3" minimum 3000# W.P. flanged full opening steel gate valve, or Halliburton Lo Torc Plug valve. |
| 12 | 3" minimum schedule 80, Grade "B", seamless line pipe. |
| 13 | 2" minimum x 3" minimum 3000# W.P. flanged cross. |
| 10,11 | 2" minimum 3000# W.P. adjustable choke bodies. |
| 14 | Cameron Mud Gauge or equivalent (location optional in choke line). |
| 15 | 2" minimum 3000# W.P. flanged or threaded full opening steel gate valve, or Halliburton Lo Torc Plug valve. |



TEXACO, INC.
MIDLAND DIVISION
MIDLAND, TEXAS



SCALE:	DATE	EST. NO.	DWG. NO.
DRAWN BY:			
CHECKED BY:			
APPROVED BY:			

EXHIBIT C