

**NEW MEXICO OIL CONSERVATION COMMISSION
WELL LOCATION AND ACREAGE DEDICATION PLAT**

Form C-102
Supersedes C-120
Effective 1-1-65

All distances must be from the outer boundaries of the Section.

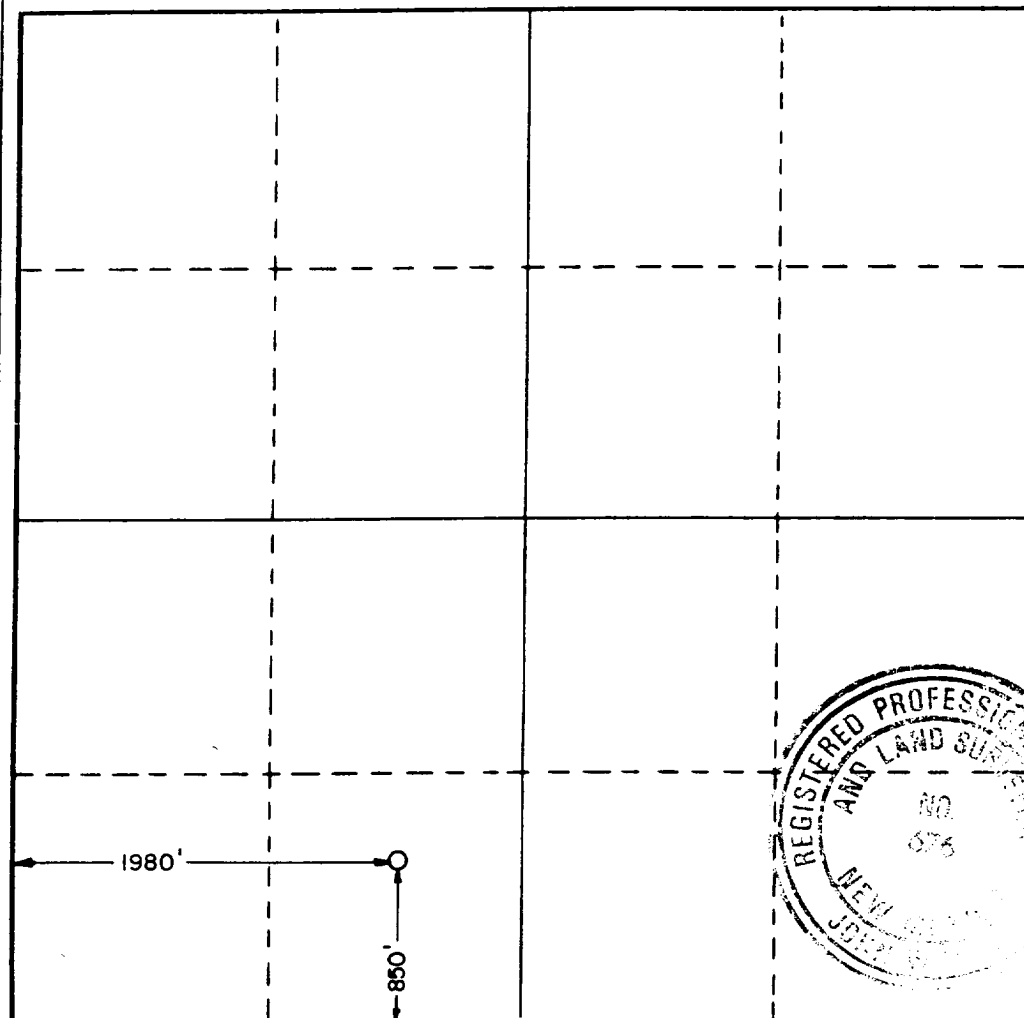
| | | | | | |
|---|--|--------------------------------|--------------------------------------|---------------------------------------|-----------------------|
| Operator MARATHON OIL COMPANY | | | Lease McDonald State A/C-1 | | Well No. 47 |
| Unit Letter N | Section 16 | Township 22 South | Range 36 East | County Lea | |
| Actual Footage Location of Well: <div style="display: flex; justify-content: space-between;"> 1980 feet from the West line and 850 feet from the South line </div> | | | | | |
| Ground Level Elev. 3538.0 | Producing Formation 7-Rivers/Queen | Pool S. Eunice SR-QN | | Dedicated Acreage: 40 Acres | |

1. Outline the acreage dedicated to the subject well by colored pencil or hatchure marks on the plat below.
2. If more than one lease is dedicated to the well, outline each and identify the ownership thereof (both as to working interest and royalty).
3. If more than one lease of different ownership is dedicated to the well, have the interests of all owners been consolidated by communitization, unitization, force-pooling, etc?

☐ Yes ☐ No If answer is "yes," type of consolidation _____

If answer is "no," list the owners and tract descriptions which have actually been consolidated. (Use reverse side of this form if necessary.) _____

No allowable will be assigned to the well until all interests have been consolidated (by communitization, unitization, forced-pooling, or otherwise) or until a non-standard unit, eliminating such interests, has been approved by the Commission.



CERTIFICATION

I hereby certify that the information contained herein is true and complete to the best of my knowledge and belief.

Name
S. L. Atnipp
Position
Drilling Superintendent
Company
Marathon Oil Company
Date
4-11-91

I hereby certify that the well location shown on this plat was plotted from field notes of actual surveys made by me or under my supervision, and that the same is true and correct to the best of my knowledge and belief.

Date Surveyed
April 6, 1991
Registered Professional Engineer
and/or Land Surveyor
John W. West

Certificate No. **JOHN W. WEST, 676**
RONALD J. EIDSON, 3239