

OIL CONSERVATION DIVISION

P.O. Box 2088
 Santa Fe, New Mexico 87504-2088

Check to determine:
 Leasehold
 State Lease - 4 copies
 Fee Lease - 1 copy

DISTRICT I
 P.O. Box 1908, Hobbs, NM 88240

DISTRICT II
 P.O. Drawer 103, Aztec, NM 88210

DISTRICT III
 1000 Rio Blanco Rd., Aztec, NM 87410

WELL LOCATION AND ACREAGE DEDICATION PLAT

All Distances must be from the outer boundaries of the section

Operator CONOCO, INC.			Lease S E M U		Well No. 124
Unit Letter C	Section 23	Township 20 SOUTH	Range 37 EAST	County LEA	
Actual Footage Location of Well: 2100 feet from the WEST line and 660 feet from the NORTH line					
Ground level Elev. 3532.3	Producing Formation Drinkard		Pool Weir Drinkard	Dedicated Acreage: 40 Acres	

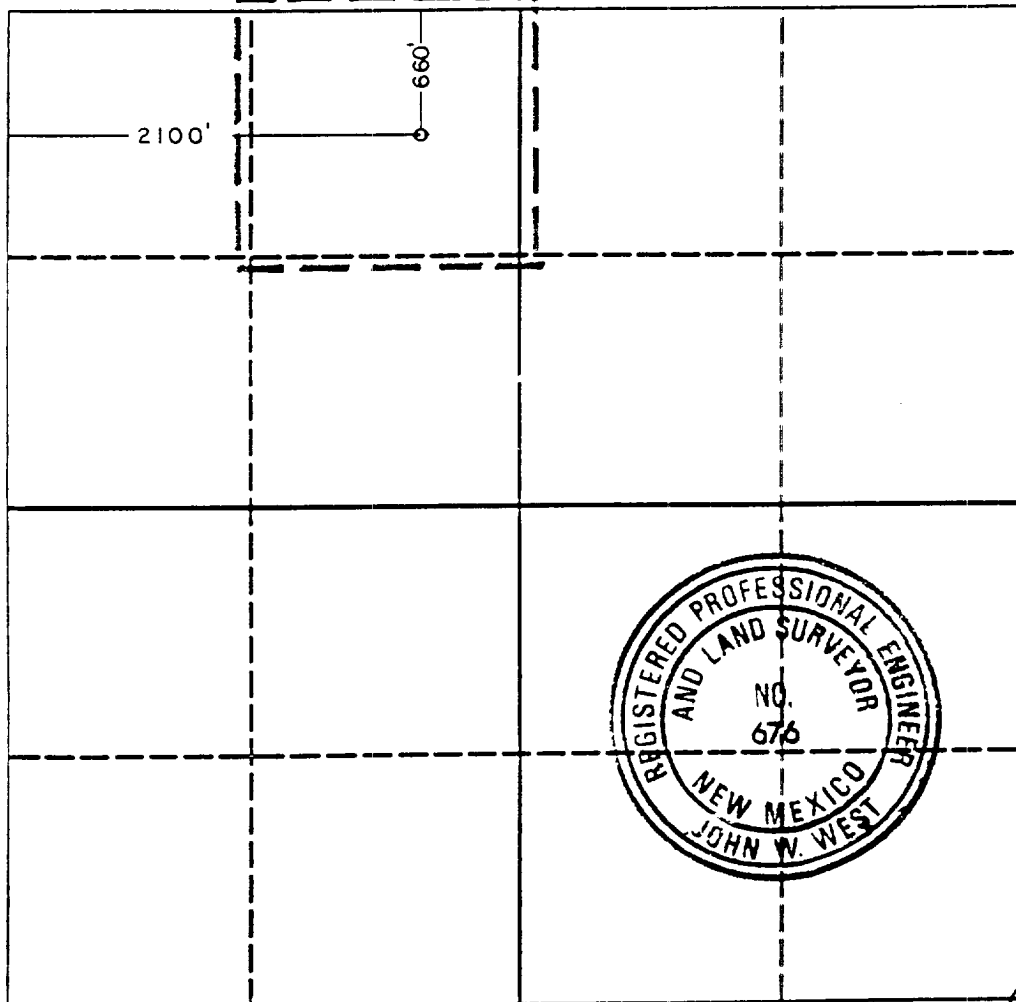
- Outline the acreage dedicated to the subject well by colored pencil or hatchure marks on the plat below.
- If more than one lease is dedicated to the well, outline each and identify the ownership thereof (both as to working interest and royalty).
- If more than one lease of different ownership is dedicated to the well, have the interest of all owners been consolidated by communitization, unitization, force-pooling, etc.?

☐ Yes
 ☐ No

If answer is "yes" type of consolidation _____

If answer is "no" list the owners and tract descriptions which have actually been consolidated. (Use reverse side of this form if necessary.) _____

No allowable will be assigned to the well until all interests have been consolidated (by communitization, unitization, forced-pooling, or otherwise) or until a non-standard unit, eliminating such interest, has been approved by the Division.



OPERATOR CERTIFICATION

I hereby certify that the information contained herein is true and complete to the best of my knowledge and belief.

Signature: *[Signature]*
 Printed Name: **Werry W. Hoover**
 Position: **Regulatory Coordinator**
 Company: **Conoco Inc.**
 Date: **4/11/91**

SURVEYOR CERTIFICATION

I hereby certify that the well location shown on this plat was plotted from field notes of actual surveys made by me or under my supervision, and that the same is true and correct to the best of my knowledge and belief.

Date Surveyed: **12-26-90**

Signature & Seal of Professional Surveyor

[Signature]
 Certificate No. **JOHN W. WEST, 676**
RONALD J. EIDSON, 3239