

UNITED STATES OF MEXICO
DEPARTMENT OF THE INTERIOR
BUREAU OF LAND MANAGEMENT

APPLICATION FOR PERMIT TO DRILL, DEEPEN, OR PLUG BACK

1a. TYPE OF WORK

DRILL ☒

DEEPEN ☐

PLUG BACK ☐

b. TYPE OF WELL

OIL WELL ☒

GAS WELL ☐

OTHER

SINGLE ZONE ☒

MULTIPLE ZONE ☐

2. NAME OF OPERATOR

POGO PRODUCING COMPANY

3. ADDRESS OF OPERATOR

P. O. BOX 10340, MIDLAND, TEXAS 79702

4. LOCATION OF WELL (Report location clearly and in accordance with any State requirements.)*

At surface

1650' FNL AND 330' FWL OF SECTION 6

At proposed prod. zone

14. DISTANCE IN MILES AND DIRECTION FROM NEAREST TOWN OR POST OFFICE*

28 MILES EAST OF CARLSBAD, NEW MEXICO

15. DISTANCE FROM PROPOSED*

LOCATION TO NEAREST PROPERTY OR LEASE LINE, FT.
(Also to nearest drlg. unit line, if any)

330'

18. DISTANCE FROM PROPOSED LOCATION* TO NEAREST WELL, DRILLING, COMPLETED, OR APPLIED FOR, ON THIS LEASE, FT.

1320'

16. NO. OF ACRES IN LEASE

647.58

19. PROPOSED DEPTH

8500'

17. NO. OF ACRES ASSIGNED TO THIS WELL

43.93

20. ROTARY OR CABLE TOOLS

ROTARY

21. ELEVATIONS (Show whether DF, RT, GR, etc.)

3599' GR

23.

PROPOSED CASING AND CEMENTING PROGRAM

R-111-P Potash Secretary's Potash

SIZE OF HOLE	SIZE OF CASING	WEIGHT PER FOOT	SETTING DEPTH	QUANTITY OF CEMENT
17-1/2"	13-3/8"	54.5#	800'	SUFFICIENT TO CIRCULATE
11"	8-5/8"	24#, 32#, 28#	4300'	SUFFICIENT TO CIRCULATE
7-7/8"	5-1/2"	15.5# & 17#	8500'	1000 SACKS - SEE STIPS.

AFTER SETTING PRODUCTION CASING, PAY ZONE WILL BE PERFORATED AND STIMULATED AS NECESSARY.

SEE ATTACHED FOR: SUPPLEMENTAL DRILLING DATA
BOP SKETCH
SURFACE USE AND OPERATIONS PLAN

APPROVAL SUBJECT TO
GENERAL REQUIREMENTS AND
SPECIAL STIPULATIONS
ATTACHED

IN ABOVE SPACE DESCRIBE PROPOSED PROGRAM: If proposal is to deepen or plug back, give data on present productive zone and proposed new productive zone. If proposal is to drill or deepen directionally, give pertinent data on subsurface locations and measured and true vertical depths. Give blowout preventer program, if any.

24.

SIGNED

Richard L. Wright

TITLE

Drilling and Production Supt. DATE August 19, 1991

(This space for Federal or State office use)

PERMIT NO.

APPROVAL DATE

APPROVED BY

TITLE

MANAGED
CARLSBAD RESOURCE AREA

DATE

9-23-91

CONDITIONS OF APPROVAL, IF ANY:

*See Instructions On Reverse Side

RECEIVED

SEP 27 1991

~~CDC~~
HOBBS OFFICE

Submit to Appropriate
District Office
State Lease - 4 copies
Fee Lease - 3 copies

State of New Mexico
Energy, Minerals and Natural Resources Department

Form C-102
Revised 1-1-89

OIL CONSERVATION DIVISION

P.O. Box 2088
Santa Fe, New Mexico 87504-2088

DISTRICT I
P.O. Box 1980, Hobbs, NM 88240

DISTRICT II
P.O. Drawer DD, Artesia, NM 88210

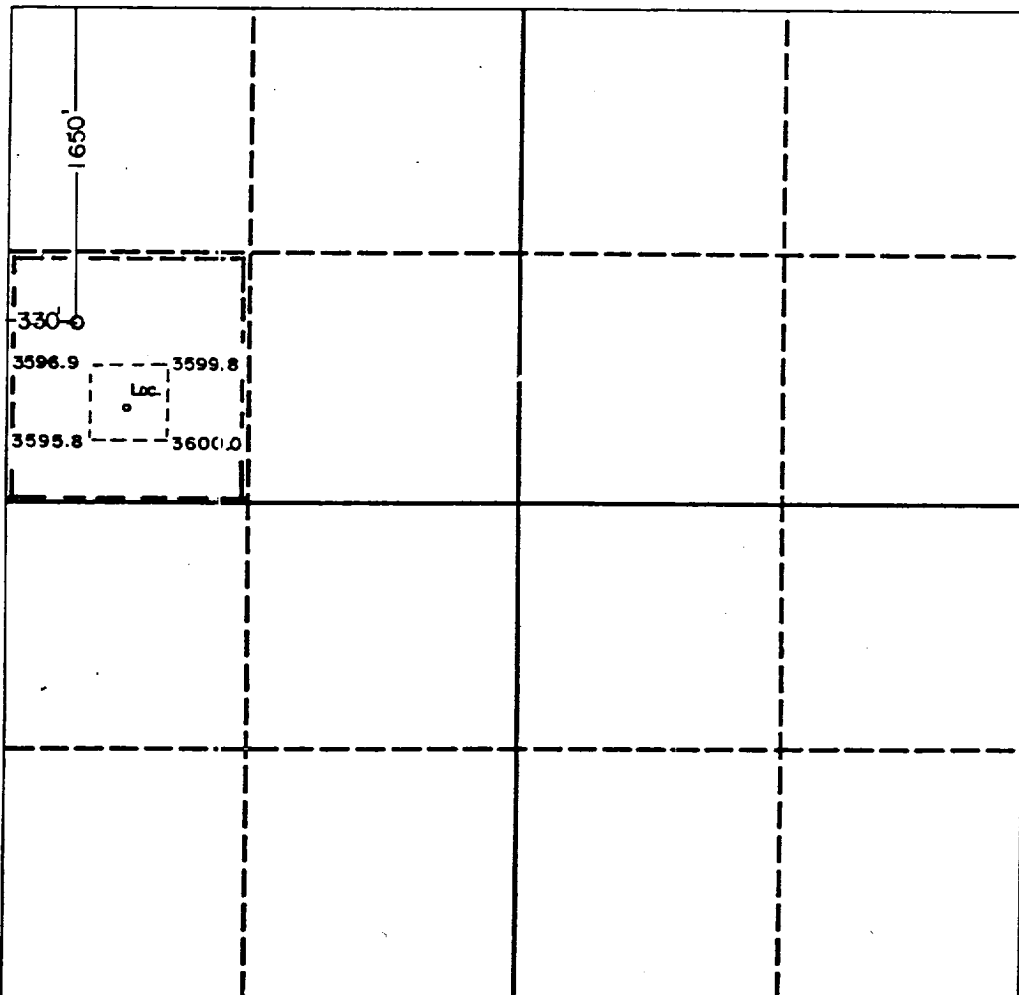
DISTRICT III
1000 Rio Brazos Rd., Aztec, NM 87410

WELL LOCATION AND ACREAGE DEDICATION PLAT

All Distances must be from the outer boundaries of the section

Operator POGO PRODUCING CO.			Lease FEDERAL 6		Well No. 2
Unit Letter E	Section 6	Township 22 SOUTH	Range 32 EAST	County LEA	
Actual Footage Location of Well: 330 feet from the WEST line and 1650 feet from the NORTH line					
Ground level Elev. 3599.0	Producing Formation DELAWARE	Pool NORtheast UNDES. LIVINGSTON RIDGE DELAWARE		Dedicated Acreage: 43.93 Acres	

1. Outline the acreage dedicated to the subject well by colored pencil or hatchure marks on the plat below.
2. If more than one lease is dedicated to the well, outline each and identify the ownership thereof (both as to working interest and royalty).
3. If more than one lease of different ownership is dedicated to the well, have the interest of all owners been consolidated by communitization, unitization, force-pooling, etc.?
☐ Yes ☐ No If answer is "yes" type of consolidation _____
If answer is "no" list the owners and tract descriptions which have actually been consolidated. (Use reverse side of this form if necessary).
No allowable will be assigned to the well until all interests have been consolidated (by communitization, unitization, forced-pooling, or otherwise) or until a non-standard unit, eliminating such interest, has been approved by the Division.



OPERATOR CERTIFICATION

I hereby certify that the information contained herein is true and complete to the best of my knowledge and belief.

Signature

Printed Name

Richard L. Wright

Position

Drilling and Prod. Supt.

Company

POGO PRODUCING COMPANY

Date

August 23, 1991

SURVEYOR CERTIFICATION

I hereby certify that the well location shown on this plat was plotted from field notes of actual surveys made by me or under my supervision, and that the same is true and correct to the best of my knowledge and belief.

Date Surveyed

8-17-91

Signature & Seal of
Professional Surveyor

John W. West

Certificate No. JOHN W. WEST, 676
RONALD J. EIDSON, 3239

REC'D 10

SEP 27 1991

000
HOBBS OFFICE

SUPPLEMENTAL DRILLING DATA

POGO PRODUCING COMPANY

FEDERAL 6 WELL NO.2

1. SURFACE FORMATION: Quaternary.

2. ESTIMATED TOPS OF GEOLOGIC MARKERS:

Rustler Anhydrite	750'
Delaware	4450'
Bell Canyon	4550'
Cherry Canyon	5450'
Brushy Canyon	7200'

3. ANTICIPATED POSSIBLE HYDROCARBON BEARING ZONES:

Brushy Canyon	Oil
---------------	-----

4. PROPOSED CASING AND CEMENTING PROGRAM:

13-3/8" 54.5# K-55 ST&C casing is to be set at approximately 800 feet in 17-1/2" hole. Casing to be cemented with 500 sacks of Light cement tailed in with 200 sacks of Class "C" with 2% CaCl. Cement to circulate.

8-5/8" 24#, 28#, and 32# J-55 and S-80 ST&C casing is to be set at approximately 4300 feet in 11" hole. Casing is to be cemented with 1200 sacks of Light cement tailed in with 200 sacks of Class "C" with 1% CaCl. Cement to circulate.

5-1/2" 15.5# and 17# K-55 and N-80 LT&C casing is to be set at 8500 feet in 7-7/8" hole. Casing is to be cemented with 1000 sacks of Class H cement. Cement to tie-back.

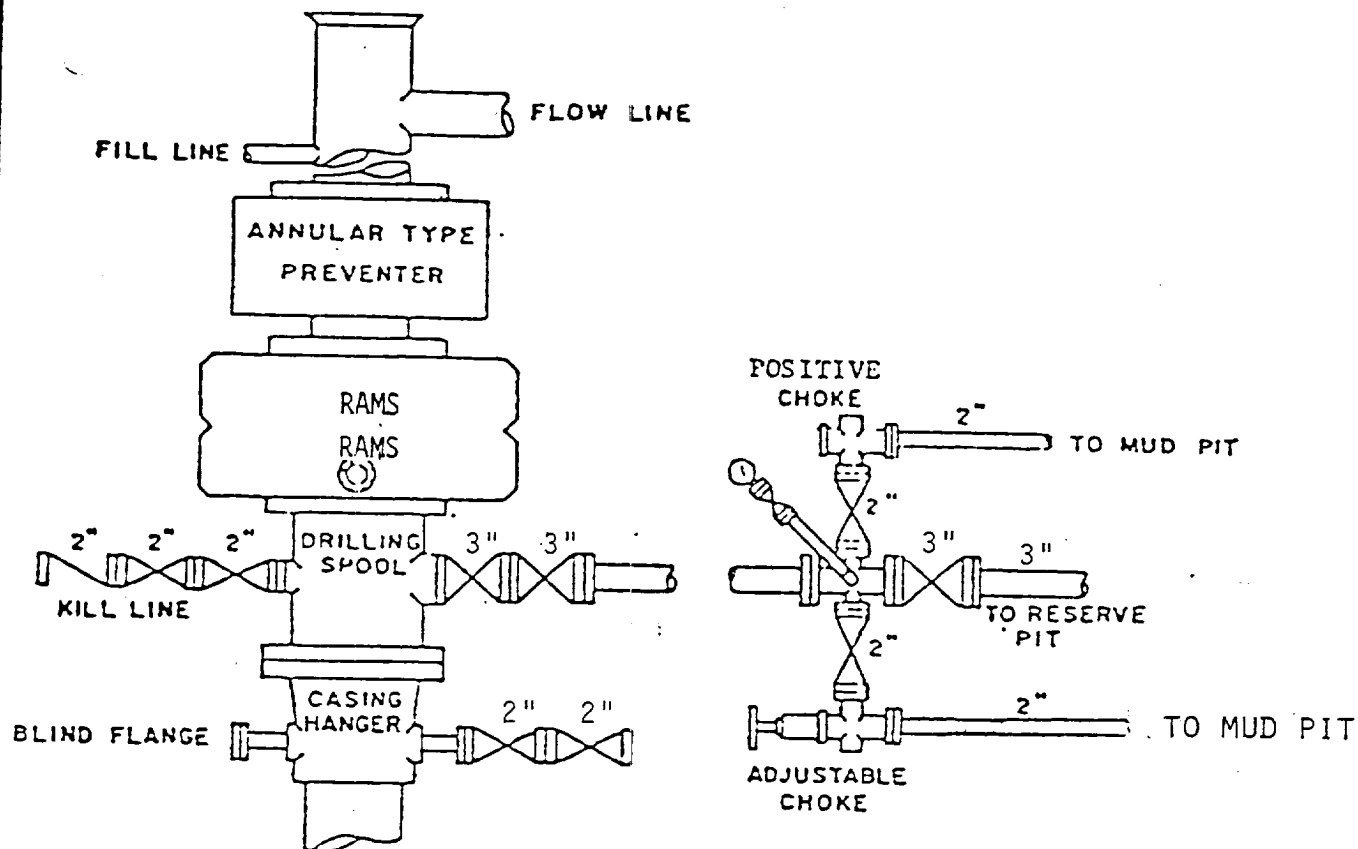
5. PRESSURE CONTROL EQUIPMENT:

Blowout prevention equipment, while drilling the 11" hole, will be either a 3000 psi working pressure double ram type preventer or a 3000 psi working pressure annular type preventer.

Blow out prevention equipment, while drilling below the 8-5/8" casing seat, will be a 3000 psi working pressure BOP stack. A BOP sketch is attached.

SEP 27 1991

CHIEF
HOBBS OFFICE



BOP STACK

3000 PSI WORKING PRESSURE

BOP ARRANGEMENT

RECEIVED

SEP 27 1991

COG
HOBBS OFFICE

RE

SEP 2 .

COG
HOBBS OFFICE