

OIL CONSERVATION DIVISION

DISTRICT I  
P.O. Box 1980, Hobbs, NM 88240

P.O. Box 2088

Santa Fe, New Mexico 87504-2088

DISTRICT II  
P.O. Drawer DD, Artesia, NM 88210

DISTRICT III  
1000 Rio Brazos Rd., Aztec, NM 87410

WELL LOCATION AND ACREAGE DEDICATION PLAT

All Distances must be from the outer boundaries of the section

Operator POGO PRODUCING CO.			Lease RT 23 FEDERAL		Well No. 1
Unit Letter P	Section 23	Township 22 SOUTH	Range 32 EAST	NMPM	County LEA

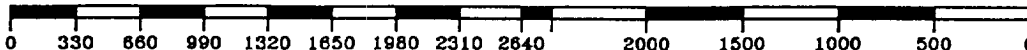
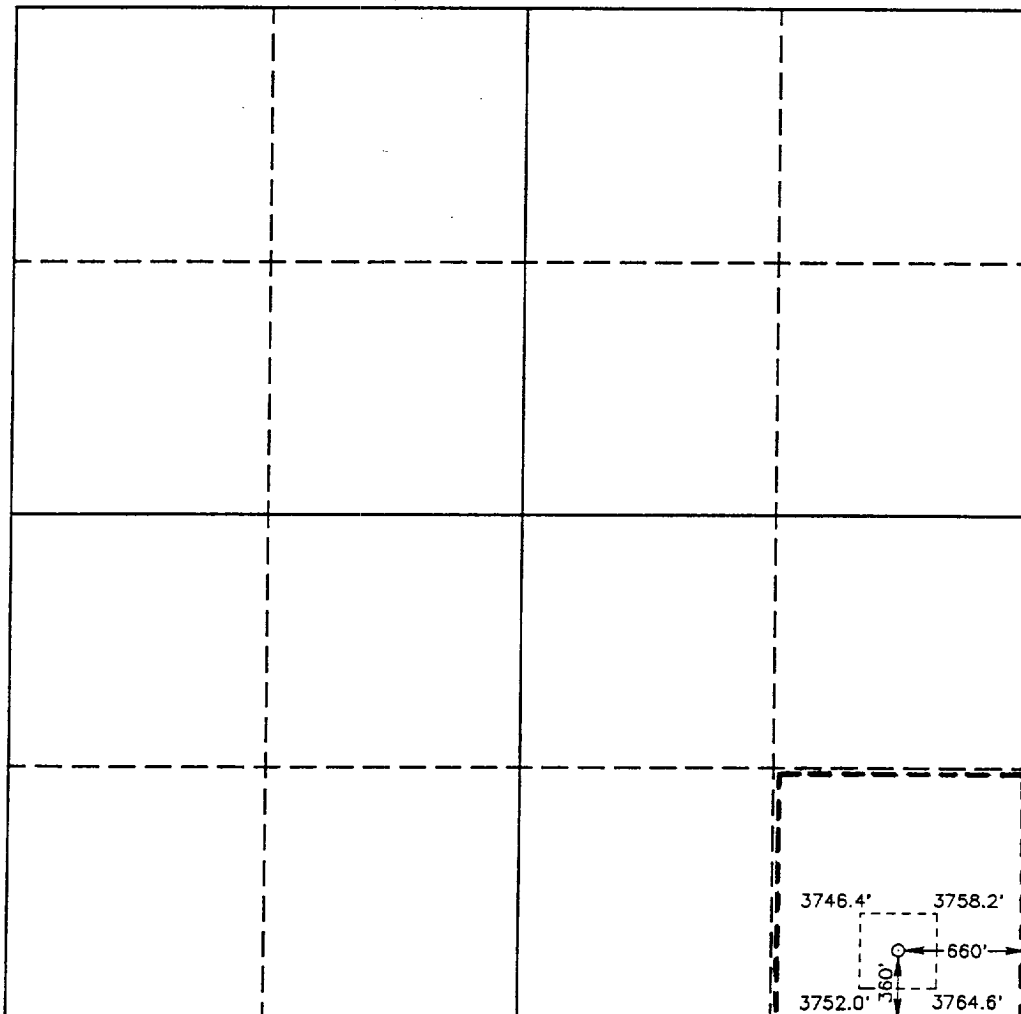
Actual Footage Location of Well:

360 feet from the SOUTH line and		660 feet from the EAST line	
Ground Level Elev. 3757.6'	Producing Formation DELAWARE	Pool WILDCAT	Dedicated Acreage: 40 Acres

1. Outline the acreage dedicated to the subject well by colored pencil or hachure marks on the plat below.
2. If more than one lease is dedicated to the well, outline each and identify the ownership thereof (both as to working interest and royalty).
3. If more than one lease of different ownership is dedicated to the well, have the interest of all owners been consolidated by communitization, unitization, force-pooling, etc.?  
☐ Yes ☐ No If answer is "yes" type of consolidation \_\_\_\_\_

If answer is "no" list of owners and tract descriptions which have actually been consolidated. (Use reverse side of this form necessary.)

No allowable will be assigned to the well unit all interests have been consolidated (by communitization, unitization, forced-pooling, otherwise) or until a non-standard unit, eliminating such interest, has been approved by the Division.



OPERATOR CERTIFICATION

I hereby certify the the information contained herein is true and complete to the best of my knowledge and belief.

Signature  
*Richard L. Wright*

Printed Name  
Richard L. Wright

Position  
Division Operations Supr.

Company  
POGO PRODUCING COMPANY

Date  
August 6, 1992

SURVEYOR CERTIFICATION

I hereby certify that the well location shown on this plat was plotted from field notes of actual surveys made by me or under my supervision and that the same is true and correct to the best of my knowledge and belief.

Date Surveyed  
AUGUST 03, 1992

Signature & Seal of  
Professional Surveyor

*Gary L. Jones*  
GARY L. JONES  
NEW MEXICO  
REGISTERED PROFESSIONAL SURVEYOR  
Certificate No. JOHN W. WEST, 676  
RONALD J. EIDSON, 3239  
GARY L. JONES, 7877

92-11106