

UNITED STATES
DEPARTMENT OF THE INTERIOR
BUREAU OF LAND MANAGEMENT

CONTACT RECEIVING
OFFICE FOR NUMBER
OF COPIES REQUIRED
(Other instructions on
reverse side)

30-025-31726
BLM Roswell District
Modified Form No.
NMO60-3160-2

APPLICATION FOR PERMIT TO DRILL, DEEPEN, OR PLUG BACK

1a. TYPE OF WORK

DRILL ☒

DEEPEN ☐

PLUG BACK ☐

b. TYPE OF WELL

OIL
WELL ☒

GAS
WELL ☐

OTHER

SINGLE
ZONE ☐

MULTIPLE
ZONE ☐

2. NAME OF OPERATOR

Strata Production Company

3a. Area Code & Phone No.

505-622-1127

3. ADDRESS OF OPERATOR

Post Office Box 1030, Roswell, New Mexico 88202

4. LOCATION OF WELL (Report location clearly and in accordance with any State requirements.)

At surface

1650' FNL & 1980' FWL

unit F

At proposed prod. zone

Delaware

14. DISTANCE IN MILES AND DIRECTION FROM NEAREST TOWN OR POST OFFICE*

Approximately 35 miles east of Carlsbad, NM

15. DISTANCE FROM PROPOSED*

LOCATION TO NEAREST
PROPERTY OR LEASE LINE, FT.
(Also to nearest drig. unit line, if any)

1650'

18. DISTANCE FROM PROPOSED LOCATION*

TO NEAREST WELL, DRILLING, COMPLETED,
OR APPLIED FOR, ON THIS LEASE, FT.

1000'

16. NO. OF ACRES IN LEASE

640.00

17. NO. OF ACRES ASSIGNED
TO THIS WELL

40.0

19. PROPOSED DEPTH

8750'

20. ROTARY OR CABLE TOOLS

Rotary

21. ELEVATIONS (Show whether DF, RT, GR, etc.)

3695' GR

22. APPROX. DATE WORK WILL START*

September 15, 1992

23.

PROPOSED CASING AND CEMENTING PROGRAM

Carlsbad Controlled Water Basin

HOLE SIZE	CASING SIZE	WEIGHT/FOOT	GRADE	THREAD TYPE	SETTING DEPTH	QUANTITY OF CEMENT
17 1/2"	13 3/8"	48#	H-40	8 RD ST&C	600'	circ
11"	8 5/8"	24# & 32#	J-55	8 RD ST&C	4460'	+200 into surf csg
7 7/8"	5 1/2"	17#	J-55	8 RD LT&C	8750'	+600' above upper- most pay zone.

A. Will drill to a depth sufficient to test Delaware formation.

* B. Mud Program: Native Mud to 600' 635
Brine 600' to 4460'
Cut Brine 70-80K Chloride 4460' to 6400'
Cut Brine & Starch 6800' to TD (WL 15-25, Vis 31)

C. BOP will be installed-See Exhibit "D".

D. Logs to be run: CNL/FDC, DLL/MSFL, GR/Neutron.

* Water analysis from Gilmore Federal #1 SWD well attached.

IN ABOVE SPACE DESCRIBE PROPOSED PROGRAM: If proposal is to deepen or plug back, give data on present productive zone and proposed new productive zone. If proposal is to drill or deepen directionally, give pertinent data on subsurface locations and measured and true vertical depths. Give blowout preventer program, if any.

24.

SIGNED Regina Linley TITLE Production Records/Land Mgr. DATE 08/18/92

(This space for Federal or State office use)

PERMIT NO.

APPROVAL DATE

* Signed by Richard J. Adams

AREA MANAGER

CARLSBAD RESOURCE AREA

APPROVED BY

TITLE

DATE

CONDITIONS OF APPROVAL, IF ANY:

GENERAL REQUIREMENTS AND
SPECIAL STIPULATIONS

*See Instructions On Reverse Side

Submit to Appropriate
District Office
State Lease - 4 copies
Fee Lease - 3 copies

State of New Mexico
Energy, Minerals and Natural Resources Department

Form C-102
Revised 1-1-89

OIL CONSERVATION DIVISION

P.O. Box 2088
Santa Fe, New Mexico 87504-2088

DISTRICT I
P.O. Box 1980, Hobbs, NM 88240

DISTRICT II
P.O. Drawer DD, Artesia, NM 88210

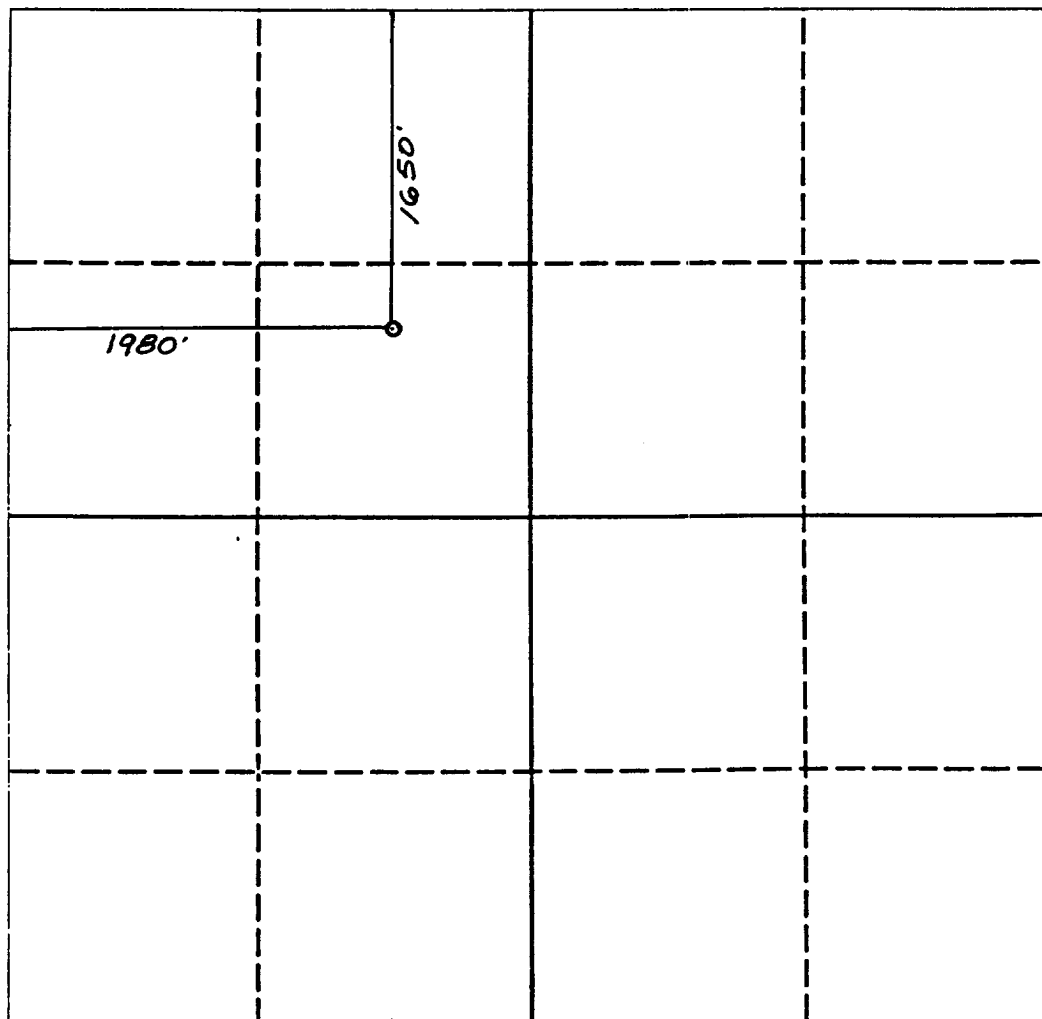
DISTRICT III
1000 Rio Brazos Rd., Aztec, NM 87410

WELL LOCATION AND ACREAGE DEDICATION PLAT

All Distances must be from the outer boundaries of the section

Operator STRATA PRODUCTION			Lease CERCION FEDERAL		Well No. 4
Unit Letter F	Section 22	Township 22 SOUTH	Range 32 EAST	County NMPM LEA COUNTY, NM	
Actual Footage Location of Well: 1650 feet from the NORTH line and 1980 feet from the WEST line					
Ground level Elev. 3695.	Producing Formation Delaware		Pool East Livingston Ridge	Dedicated Acreage: 40.0 Acres	

1. Outline the acreage dedicated to the subject well by colored pencil or hachure marks on the plat below.
2. If more than one lease is dedicated to the well, outline each and identify the ownership thereof (both as to working interest and royalty).
3. If more than one lease of different ownership is dedicated to the well, have the interest of all owners been consolidated by communitization, unitization, force-pooling, etc.?
☐ Yes ☐ No If answer is "yes" type of consolidation _____
If answer is "no" list the owners and tract descriptions which have actually been consolidated. (Use reverse side of this form if necessary). _____
No allowable will be assigned to the well until all interests have been consolidated (by communitization, unitization, forced-pooling, or otherwise) or until a non-standard unit, eliminating such interest, has been approved by the Division.



OPERATOR CERTIFICATION

I hereby certify that the information contained herein is true and complete to the best of my knowledge and belief.

Signature
Regina Finley
Printed Name
Regina Finley
Position
Production Records/Land Mgr.
Company
Strata Production Company
Date
July 20, 1992

SURVEYOR CERTIFICATION

I hereby certify that the well location shown on this plat was plotted from field notes of actual surveys made by me or under my supervision, and that the same is true and correct to the best of my knowledge and belief.

Date Surveyed
JULY 16, 1992
Signature & Seal of Professional Surveyor
Reddy
Professional Surveyor
NEW MEXICO
REGISTERED
5-12
CERTIFICATE NO. SURVEYOR
NM REGS. NO. 5412
ENGINEER

0 330 660 990 1320 1650 1980 2310 2640 2000 1500 1000 500 0

HOLE PROGNOSIS
APPLICATION FOR PERMIT TO DRILL
STRATA PRODUCTION COMPANY
CERCION FEDERAL #4 WELL
1650' FNL & 1980' FWL
SECTION 22, T22S, R32E

In conjunction with form 3160-3, Application for Permit to Drill, Strata Production Company submits the following items in accordance with Onshore Oil and Gas Order Numbers 1 & 2, and with all other applicable federal and state regulations.

1. The Geologic surface formation is of Permian Age.
2. Estimated tops of geologic markers are as follows:

Rustler	870'	Bone Spring	8610'
Top of Salt	1020'	T.D.	8750'
Base of Salt	4410'		
Lamar	4720'		

3. The estimated depths at which water, oil or gas formations are expected to be encountered are:

*Water: 150'
**Oil or Gas: Delaware 4720' - 8750'

* NOTE: Groundwater to be protected by 13 3/8" surface casing with cement circulated to the surface.

**NOTE: Potentially productive horizons to be protected by 5 1/2" production casing with cement tied back to intermediate casing.

4. Casing Program: (See Form 3160-3)
5. Pressure Control Equipment: See Exhibit "D", BOP diagram.
6. Mud Program: See Application to Drill 3160-3.
7. Auxiliary Equipment: None required.
8. Testing, Logging, and Coring Program:

Two (2) man Mudlogging unit from top of Delaware to TD
DLL-MSFL, CNL-Density, Gamma Ray, Caliper.

9. Abnormal Pressures, Temperature, or other Hazards:

Loss of circulation is possible in the Delaware section of the hole, however, no loss was seen in the recent drilling of offsetting wells.

10. Anticipated starting date: September 15, 1992

Forecasted duration of operations:

Drilling: 25 days
Completion: 15 days

ADDITIONS - DELETIONS - CHANGES SPECIFY
•
•
•



**3000* PSI WORKING PRESSURE
BLOWOUT PREVENTER HOOK-UP**

The reducing manifold and remote isolating manifold shall have a separate control for each pressure-operated device. Controls are to be labeled, with control handles indicating open and closed positions. A primary shutoff and regulator shall be provided for opening the hydraulic preventer. When installed, a second pressure indicator shall be available to both opening fluid pressure to ram prevention.

.. 2. Hydraulic oil, on equipment or battery, is to be used as the fluid in operating the hydraulic equipment.

The choke manifold, choke flow line, relief line, and choke lines are to be supported by metal stands and adequately anchored. The choke flow line, relief line, and choke lines shall be constructed as straight as possible and without sharp bends. Every end use access is to be maintained in the choke manifold. If deemed necessary, walkways and subways shall be erected in and around the choke manifold. All valves are to be selected for operation in the pressure of oil, gas, and drilling fluids. The choke flow line valves and relief line valves connected to the drilling spread and oil can type preventers must be equipped with stem extensions, universal joints if needed, and hand wheels which are to extend beyond the edge of the derrick substructure. All other valves are to be equipped with handwheels.