

OFFICIAL FILE COPY

30-025-31743

SEP 29

3160(067)  
NM-69372

ccc 9-21-92  
RLM 9/24/92  
GCH 9/24/92  
Herguson

CERTIFIED--RETURN RECEIPT REQUESTED  
P 864 872 889

Pogo Producing Company  
Attention: Richard L. Wright  
P. O. Box 10340  
Midland, TX 79702

RE: LR 7 Federal Well No. 1  
NM-69372  
660' FSL & 660' FEL, Sec. 7, T22S, R32E  
Lea County, New Mexico

Dear Mr. Wright:

I am pleased to approve your Application for Permit to Drill (APD) at the present location. Your copy of the APD, with attached stipulations, is enclosed.

If you need any additional information, please contact Tony Herrell at the Carlsbad Resource Area (505) 887-6544.

Sincerely,

Monte G. Jordan

*for* Larry L. Woodard  
State Director

1 Enclosure:  
1 - Application for Permit to Drill (APD)

bcc:  
NM (910, L. Woodard)  
NM (920, R. Smith)  
NM (067, T. Herrell)  
NM (060, A. Lopez)  
NM (060, L. Cone)

067:Jolsen:nm:09/12/92:A:\lr7f1.AL

UNITED STATES  
DEPARTMENT OF THE INTERIOR  
BUREAU OF LAND MANAGEMENT

APPLICATION FOR PERMIT TO DRILL, DEEPEN, OR PLUG BACK

1a. TYPE OF WORK

DRILL ☒

DEEPEN ☐

PLUG BACK ☐

b. TYPE OF WELL

OIL WELL ☒

GAS WELL ☐

OTHER

SINGLE ZONE ☒

MULTIPLE ZONE ☐

2. NAME OF OPERATOR

POGO-PRODUCING COMPANY

3. ADDRESS OF OPERATOR

P.O. BOX 10340, MIDLAND, TEXAS 79702

4. LOCATION OF WELL (Report location clearly and in accordance with any State requirements.)

At surface

Unit 8  
At proposed prod. zone

660' FSL AND 660' FEL OF SECTION 7

14. DISTANCE IN MILES AND DIRECTION FROM NEAREST TOWN OR POST OFFICE\*

31 MILES EAST OF CARLSBAD, NEW MEXICO

16. DISTANCE FROM PROPOSED\*  
LOCATION TO NEAREST  
PROPERTY OR LEASE LINE, FT.  
(Also to nearest drig. unit line, if any)

660'

16. NO. OF ACRES IN LEASE

324.38

17. NO. OF ACRES ASSIGNED  
TO THIS WELL

40

18. DISTANCE FROM PROPOSED LOCATION\*  
TO NEAREST WELL, DRILLING, COMPLETED,  
OR APPLIED FOR, ON THIS LEASE, FT.

--

19. PROPOSED DEPTH

8650'

20. ROTARY OR CABLE TOOLS

ROTARY

21. ELEVATIONS (Show whether DF, RT, GR, etc.)

3708.1 GR  
Controlled Water Basin

22. APPROX. DATE WORK WILL START\*

UPON APPROVAL

23.

PROPOSED CASING AND CEMENTING PROGRAM

Secretary's Potash

SIZE OF HOLE	SIZE OF CASING	WEIGHT PER FOOT	SETTING DEPTH	QUANTITY OF CEMENT
17-1/2"	13-3/8"	54.5#	850'	SUFFICIENT TO CIRCULATE
11"	8-5/8"	24#, 32#, 28#	4550'	SUFFICIENT TO CIRCULATE
7-7/8"	5-1/2"	15.5# & 17#	8650'	1000 SACKS - TO TIE BACK

AFTER SETTING PRODUCTION CASING, PAY ZONE WILL BE PERFORATED  
AND STIMULATED AS NECESSARY.

SEE ATTACHED FOR: SUPPLEMENTAL DRILLING DATA  
BOP SKETCH  
SURFACE USE AND OPERATIONS PLAN

IN ABOVE SPACE DESCRIBE PROPOSED PROGRAM: If proposal is to deepen or plug back, give data on present productive zone and proposed new productive zone. If proposal is to drill or deepen directionally, give pertinent data on subsurface locations and measured and true vertical depths. Give blowout preventer program, if any.

24.

SIGNED

*Richard L. Wright*  
Richard L. Wright

TITLE Division Operations Supr.

DATE August 26, 1992

(This space for Federal or State office use)

PERMIT NO.

APPROVAL DATE

APPROVED BY

TITLE

DATE

CONDITIONS OF APPROVAL, IF ANY

APPROVAL SUBJECT TO  
GENERAL REQUIREMENTS AND  
SPECIAL STIPULATIONS

\*See Instructions On Reverse Side

ATTACHED  
Title 18 U.S.C. Section 1001, makes it a crime for any person knowingly and willfully to make to any department or agency of the United States any false, fictitious or fraudulent statements or representations as to any matter within its jurisdiction.

OIL CONSERVATION DIVISION

DISTRICT I  
P.O. Box 1980, Hobbs, NM 88240

P.O. Box 2088  
Santa Fe, New Mexico 87504-2088

DISTRICT II  
P.O. Drawer DD, Artesia, NM 88210

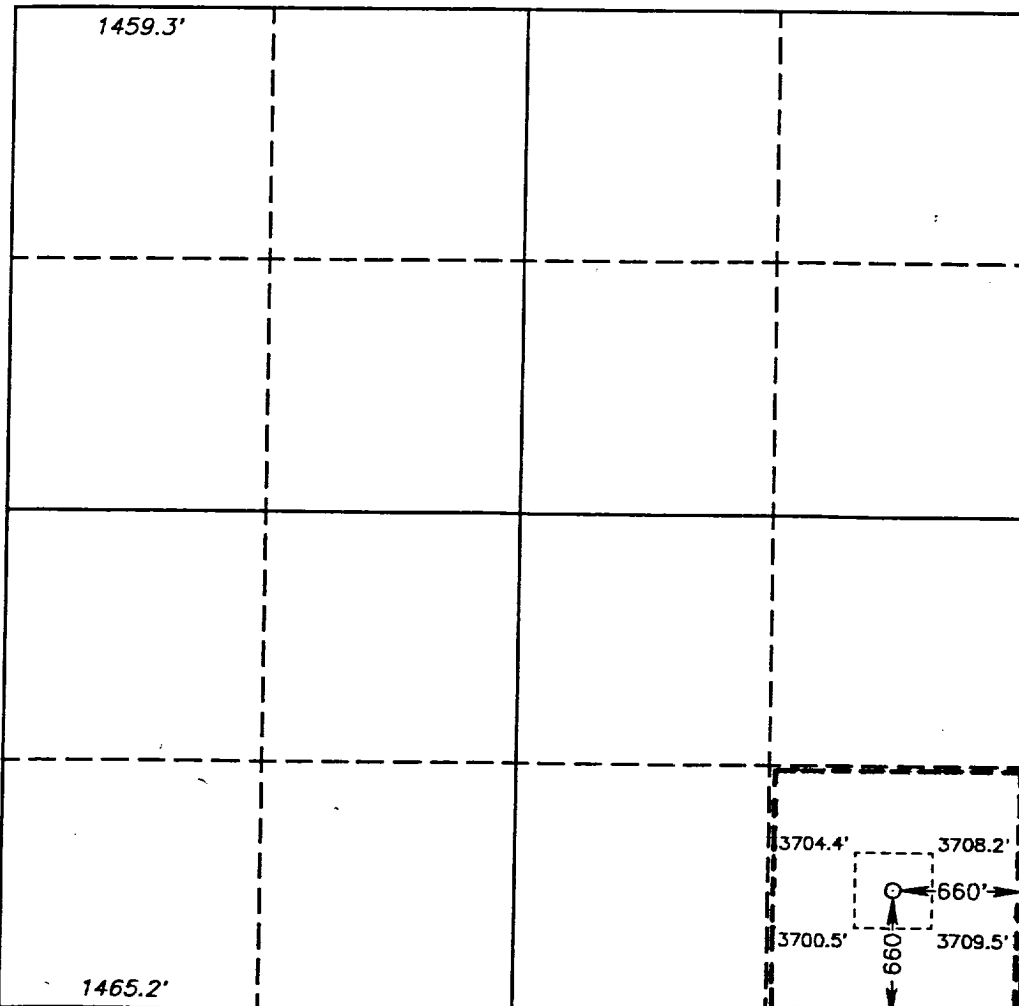
DISTRICT III  
1000 Rio Brazos Rd., Aztec, NM 87410

WELL LOCATION AND ACREAGE DEDICATION PLAT

All Distances must be from the outer boundaries of the section

Operator POGO PRODUCING CO.			Lease LR "7" FEDERAL		Well No. 1
Unit Letter P	Section 7	Township 22 SOUTH	Range 32 EAST	County LEA	
Actual Footage Location of Well:					
660 feet from the SOUTH line and		660 feet from the EAST line			
Ground Level Elev. 3708.1'	Producing Formation DELAWARE	Pool UNDES. NORTH EAST LIVINGSTON RIDGE DELAWARE			Dedicated Acreage: 40 Acres

- Outline the acreage dedicated to the subject well by colored pencil or hatchure marks on the plat below.
- If more than one lease is dedicated to the well, outline each and identify the ownership thereof (both as to working interest and royalty).
- If more than one lease of different ownership is dedicated to the well, have the interest of all owners been consolidated by communitization, unitization, force-pooling, etc.?  
☐ Yes ☐ No If answer is "yes" type of consolidation \_\_\_\_\_  
If answer is "no" list of owners and tract descriptions which have actually been consolidated. (Use reverse side of this form necessary).  
No allowable will be assigned to the well unit all interests have been consolidated (by communitization, unitization, forced-pooling, otherwise) or until a non-standard unit, eliminating such interest, has been approved by the Division.



OPERATOR CERTIFICATION

I hereby certify the the information contained herein is true and complete to the best of my knowledge and belief.

Signature  
Richard L. Wright  
Printed Name  
Richard L. Wright  
Position  
Division Operations Supr.  
Company  
POGO PRODUCING COMPANY  
Date  
August 25, 1992

SURVEYOR CERTIFICATION

I hereby certify that the well location shown on this plat was plotted from field notes of actual surveys made by me or under my supervision, and that the same is true and correct to the best of my knowledge and belief.

Date Surveyed  
AUGUST 18, 1992  
Signature & Seal of Professional Surveyor  
No. 3239  
DONALD E. JONES  
Certificate No. 676  
DONALD E. JONES, 3239  
DONALD E. JONES, 7977

92-11-1132

## SUPPLEMENTAL DRILLING DATA

POGO PRODUCING COMPANY

LR 7 FEDERAL WELL NO.1

1. SURFACE FORMATION: Quaternary.

2. ESTIMATED TOPS OF GEOLOGIC MARKERS:

Rustler	800'
Delaware	4600'
Bell Canyon	4650'
Cherry Canyon	5600'
Brushy Canyon	7300'

3. ANTICIPATED POSSIBLE HYDROCARBON BEARING ZONES:

Brushy Canyon	Oil
---------------	-----

4. PROPOSED CASING AND CEMENTING PROGRAM:

13-3/8" 54.5# K-55 ST&C casing is to be set at approximately 850 feet in 17-1/2" hole. Casing to be cemented with 500 sacks of Light cement tailed in with 200 sacks of Class "C" with 2% CaCl. Cement to circulate.

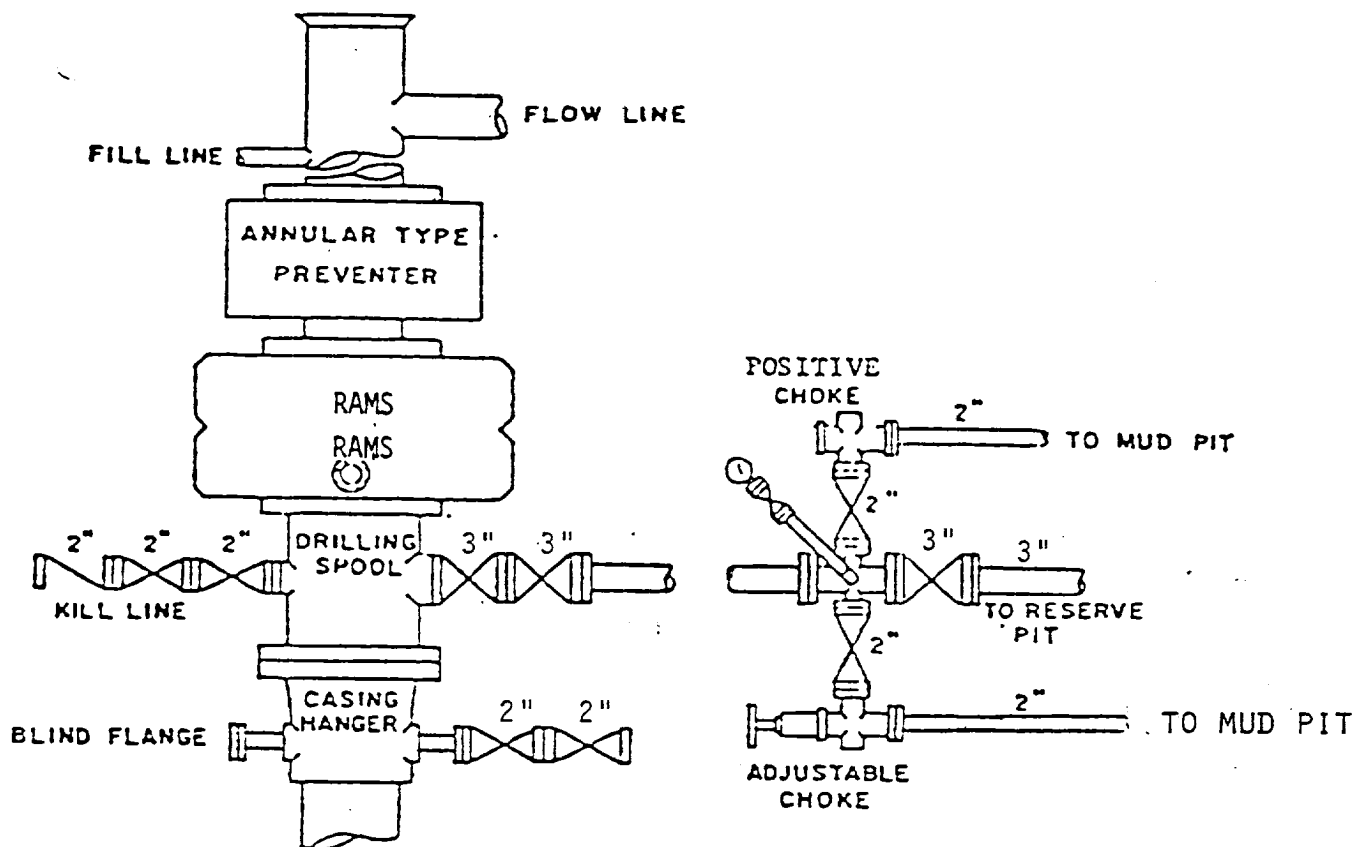
8-5/8" 24#, ~~28#~~<sup>J</sup>, and 32# ~~K-55 and N-80~~ ST&C casing is to be set at approximately 4550 feet in 11" hole. Casing is to be cemented with 1200 sacks of Light cement tailed in with 200 sacks of Class "C". Cement to circulate.

5-1/2" 15.5# and 17# K-55 and N-80 LT&C casing is to be set at 8650 feet in 7-7/8" hole. Casing is to be cemented with 900 sacks of Class "H" cement. Cement to tie back to 3550 feet.

5. PRESSURE CONTROL EQUIPMENT:

Blowout prevention equipment, while drilling the 11" hole, will be either a 3000 psi working pressure double ram type preventer or a 3000 psi working pressure annular type preventer.

Blow out prevention equipment, while drilling below the 8-5/8" casing seat, will be a 3000 psi working pressure BOP stack. A BOP sketch is attached.



BOP STACK

3000 PSI WORKING PRESSURE

BOP ARRANGEMENT