

OIL CONSERVATION DIVISION

P.O. Box 2088
Santa Fe, New Mexico 87504-2088

DISTRICT I

P.O. Box 1980, Hobbs, NM 88240

DISTRICT II

P.O. Drawer DD, Artesia, NM 88210

DISTRICT III

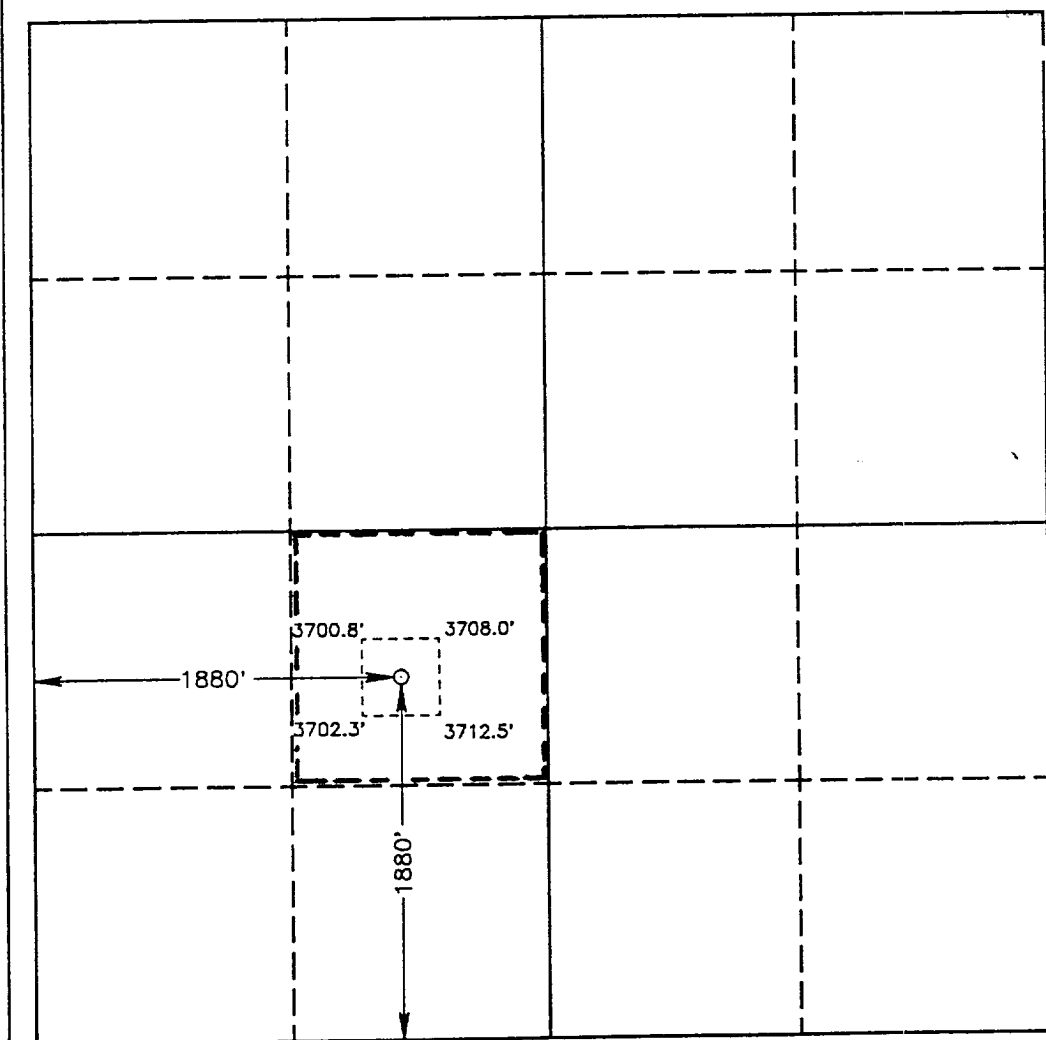
1000 Rio Brazos Rd., Aztec, NM 87410

WELL LOCATION AND ACREAGE DEDICATION PLAT

All Distances must be from the outer boundaries of the section

Operator POGO PRODUCING CO.		Lease RED TANK "26" FEDERAL		Well No. 1
Unit Letter K	Section 26	Township 22 SOUTH	Range 32 EAST NMPM	County LEA
Actual Footage Location of Well:				
1880 feet from the SOUTH line and		1880 feet from the WEST line		
Ground Level Elev. 3708.0'	Producing Formation BONE SPRINGS	Pool UNDES. RED TANK BONE SPRINGS	Dedicated Acreage: 40 Acres	

- Outline the acreage dedicated to the subject well by colored pencil or hachure marks on the plat below.
 - If more than one lease is dedicated to the well, outline each and identify the ownership thereof (both as to working interest and royalty).
 - If more than one lease of different ownership is dedicated to the well, have the interest of all owners been consolidated by communitization, unitization, force-pooling, etc.?
☐ Yes ☐ No If answer is "yes" type of consolidation _____
- If answer is "no" list of owners and tract descriptions which have actually been consolidated. (Use reverse side of this form necessary.)
No allowable will be assigned to the well unit all interests have been consolidated (by communitization, unitization, forced-pooling, otherwise) or until a non-standard unit, eliminating such interest, has been approved by the Division.



OPERATOR CERTIFICATION

I hereby certify the the information contained herein is true and complete to the best of my knowledge and belief.

Signature

Printed Name

Richard L. Wright

Position

Division Operations Supr

Company

POGO PRODUCING COMPANY

Date

December 3, 1992

SURVEYOR CERTIFICATION

I hereby certify that the well location shown on this plat was plotted from field notes of actual surveys made by me or under my supervision, and that the same is true and correct to the best of my knowledge and belief.

Date Surveyed

NOVEMBER 24, 1992

Signature & Seal of Professional Surveyor

GARY L. JONES
NEW MEXICO
1977
Certified by: JOHN W. WEST, 676
RONALD J. EASON, 3239
GARY L. JONES, 7977

92-11-1686

RECEIVED

JAN 17 1993

SCN HOBBS 1993