

# OIL CONSERVATION DIVISION

P.O. Box 2088  
Santa Fe, New Mexico 87504-2088

## DISTRICT I

P.O. Box 1980, Hobbs, NM 88240

## DISTRICT II

P.O. Drawer DD, Artesia, NM 88210

## DISTRICT III

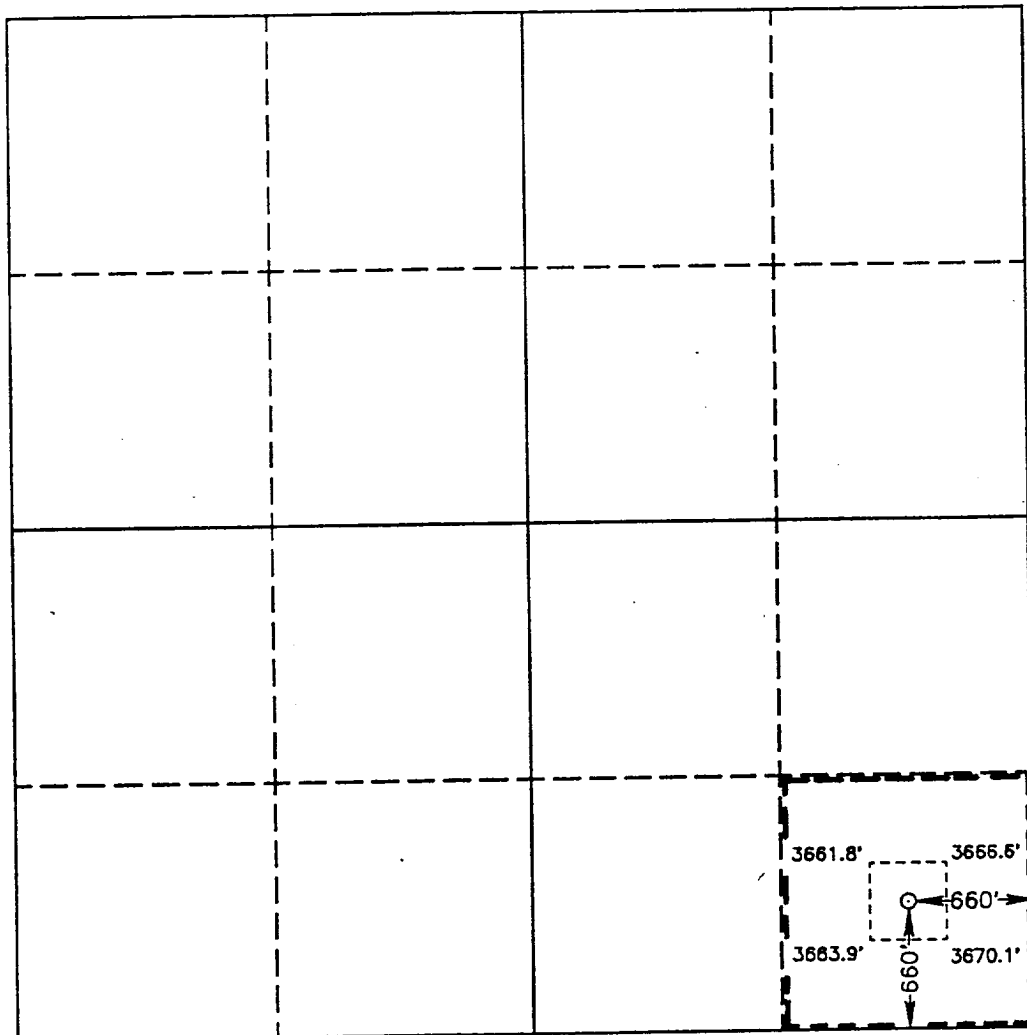
1000 Rio Brazos Rd., Aztec, NM 87410

## WELL LOCATION AND ACREAGE DEDICATION PLAT

All Distances must be from the outer boundaries of the section

Operator POGO PRODUCING CO.			Lease EXXON "27" FEDERAL		Well No. 2
Unit Letter P	Section 27	Township 22 SOUTH	Range 32 EAST	County NMPM	LEA
Actual Footage Location of Well: 660 feet from the SOUTH line and 660 feet from the EAST line					
Ground Level Elev. 3669.2'	Producing Formation BONE SPRINGS		Pool WILDCAT		Dedicated Acreage: 40 Acres

1. Outline the acreage dedicated to the subject well by colored pencil or hachure marks on the plat below.
  2. If more than one lease is dedicated to the well, outline each and identify the ownership thereof (both as to working interest and royalty).
  3. If more than one lease of different ownership is dedicated to the well, have the interest of all owners been consolidated by communitization, unitization, force-pooling, etc.?  
☐ Yes ☐ No If answer is "yes" type of consolidation \_\_\_\_\_
- If answer is "no" list of owners and tract descriptions which have actually been consolidated. (Use reverse side of this form necessary.) \_\_\_\_\_
- No allowable will be assigned to the well unit all interests have been consolidated (by communitization, unitization, forced-pooling, otherwise) or until a non-standard unit, eliminating such interest, has been approved by the Division.



### OPERATOR CERTIFICATION

I hereby certify that the information contained herein is true and complete to the best of my knowledge and belief.

Signature  
*Richard L. Wright*

Printed Name  
Richard L. Wright

Position  
Division Operations Supr.

Company  
POGO PRODUCING COMPANY

Date  
January 4, 1993

### SURVEYOR CERTIFICATION

I hereby certify that the well location shown on this plat was plotted from field notes of actual surveys made by me or under my supervision, and that the same is true and correct to the best of my knowledge and belief.

Date Surveyed  
DECEMBER 1, 1992

Signature & Seal of  
Professional Surveyor

*[Signature]*  
GARY L. JONES  
NEW MEXICO  
Certification No. 7966-N.W. WEG. 876  
RONALD A. EDSON, 3239  
GARY L. JONES, 7977  
11-185-1000  
OFFICIAL SEAL

0 330 660 990 1320 1650 1980 2310 2640 2000 1500 1000 500 0