

APPLICATION FOR PERMIT TO DRILL, DEEPEN, OR PLUG BACK

1a. TYPE OF WORK

DRILL ☒

DEEPEN ☐

PLUG BACK ☐

b. TYPE OF WELL

OIL
WELL ☒

GAS
WELL ☐

OTHER ☐

SINGLE
ZONE ☒

MULTIPLE
ZONE ☐

2. NAME OF OPERATOR

POGO PRODUCING COMPANY

3. ADDRESS OF OPERATOR

P.O. BOX 10340, MIDLAND, TEXAS 79702

4. LOCATION OF WELL (Report location clearly and in accordance with any State requirements.)

At surface

Unit 11

1980' FNL AND 660' FEL OF SECTION 18

At proposed prod. zone

14. DISTANCE IN MILES AND DIRECTION FROM NEAREST TOWN OR POST OFFICE*

31 MILES EAST OF CARLSBAD, NEW MEXICO

10. DISTANCE FROM PROPOSED*

LOCATION TO NEAREST

PROPERTY OR LEASE LINE, FT.

(Also to nearest drig. unit line, if any)

660'

18. DISTANCE FROM PROPOSED LOCATION*

TO NEAREST WELL, DRILLING, COMPLETED,

OR APPLIED FOR, ON THIS LEASE, FT.

1350'

21. ELEVATIONS (Show whether DF, RT, GR, etc.)

3729.6' GR

23.

PROPOSED CASING AND CEMENTING PROGRAM

SIZE OF HOLE	SIZE OF CASING	WEIGHT PER FOOT	SETTING DEPTH	QUANTITY OF CEMENT
17-1/2"	13-3/8"	54.5#	850'	SUFFICIENT TO CIRCULATE
11"	8-5/8"	24# & 32#	4600'	SUFFICIENT TO CIRCULATE
7-7/8"	5-1/2"	15.5# & 17#	8800'	SUFFICIENT TO CIRCULATE (tieback)

AFTER SETTING PRODUCTION CASING, PAY ZONE WILL BE PERFORATED
AND STIMULATED AS NECESSARY.

SEE ATTACHED FOR: SUPPLEMENTAL DRILLING DATA
BOP SKETCH
SURFACE USE AND OPERATIONS PLAN

IN ABOVE SPACE DESCRIBE PROPOSED PROGRAM: If proposal is to deepen or plug back, give data on present productive zone and proposed new productive zone. If proposal is to drill or deepen directionally, give pertinent data on subsurface locations and measured and true vertical depths. Give blowout preventer program, if any.

24.

SIGNED

Richard L. Wright
Richard L. Wright

TITLE Division Operations Supr.

DATE January 22, 1992

(This space for Federal or State office use)

PERMIT NO.

APPROVAL DATE

AREA MANAGER

APPROVED BY

TITLE

DATE

4/8/93

CONDITIONS OF APPROVAL, IF ANY:

APPROVAL SUBJECT TO
GENERAL REQUIREMENTS AND
SPECIAL STIPULATIONS

*See Instructions On Reverse Side

Title 18 U.S.C. Section 1001, makes it a crime for any person knowingly and willfully to make to any department or agency of the United States any false, fictitious or fraudulent statements or representations as to any matter within its jurisdiction.

RECEIVED

APR 09 1993

U.S. DEPARTMENT OF JUSTICE

OIL CONSERVATION DIVISION

DISTRICT I
P.O. Box 1980, Hobbs, NM 88240

P.O. Box 2088
Santa Fe, New Mexico 87504-2088

DISTRICT II
P.O. Drawer DD, Artesia, NM 88210

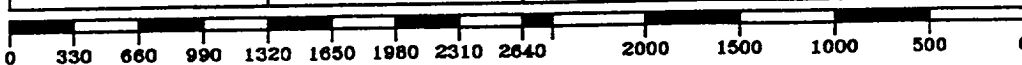
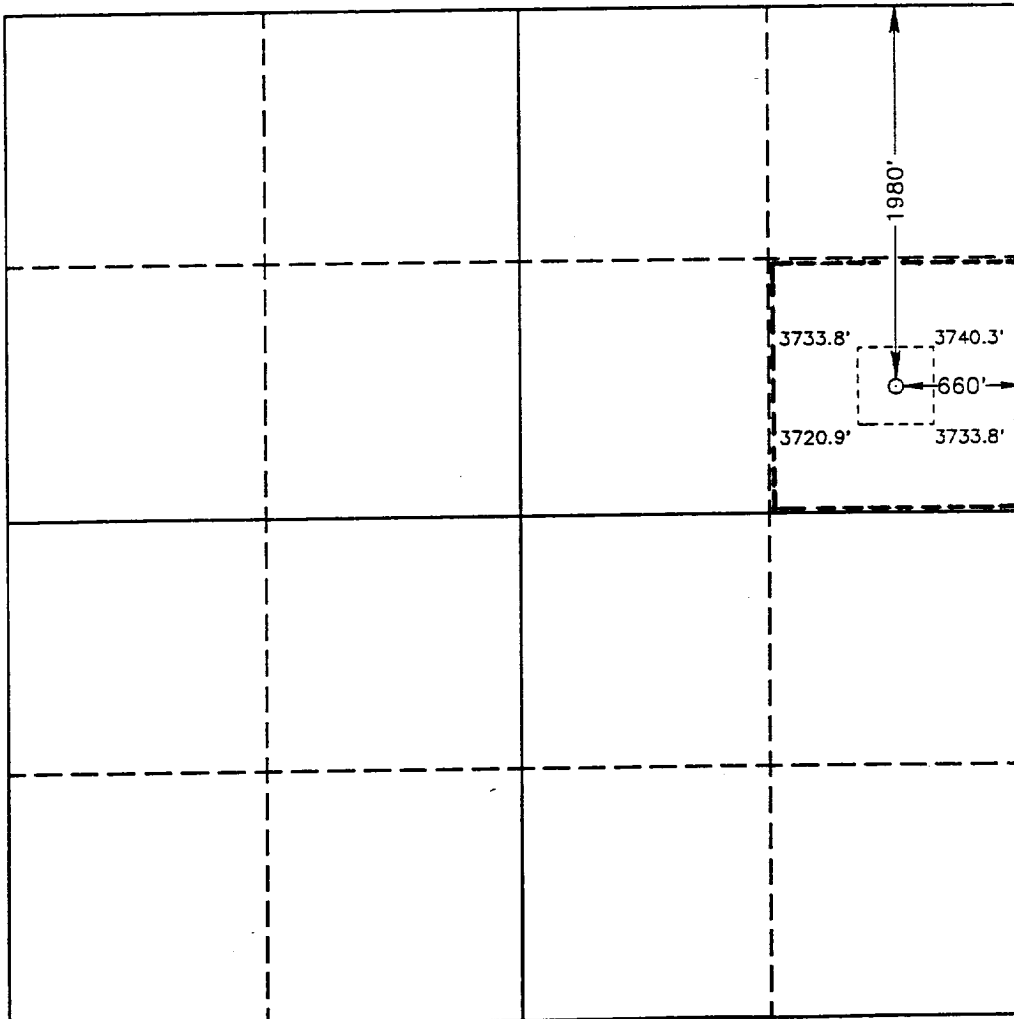
DISTRICT III
1000 Rio Brazos Rd., Aztec, NM 87410

WELL LOCATION AND ACREAGE DEDICATION PLAT

All Distances must be from the outer boundaries of the section

Operator POGO PRODUCING CO.			Lease EAST LIVINGSTON RIDGE UNIT		Well No. 2
Unit Letter H	Section 18	Township 22 SOUTH	Range 32 EAST	NMPM	County LEA
Actual Postage Location of Well: 1980 feet from the NORTH line and 660 feet from the EAST line					
Ground Level Elev. 3729.6'	Producing Formation DELAWARE	Pool UNDESIGNATED EAST LIVINGSTON RIDGE DELAWARE		Dedicated Acreage: 40 Acres	

- Outline the acreage dedicated to the subject well by colored pencil or hatchure marks on the plat below.
- If more than one lease is dedicated to the well, outline each and identify the ownership thereof (both as to working interest and royalty).
- If more than one lease of different ownership is dedicated to the well, have the interest of all owners been consolidated by communitization, unitization, force-pooling, etc.?
☐ Yes ☐ No If answer is "yes" type of consolidation _____
If answer is "no" list of owners and tract descriptions which have actually been consolidated. (Use reverse side of this form necessary.)
No allowable will be assigned to the well unit all interests have been consolidated (by communitization, unitization, forced-pooling, otherwise) or until a non-standard unit, eliminating such interest, has been approved by the Division.



OPERATOR CERTIFICATION I hereby certify that the information contained herein is true and complete to the best of my knowledge and belief. Signature: <i>Richard L. Wright</i> Printed Name: Richard L. Wright Position: Division Operations Supr. Company: POGO PRODUCING COMPANY Date: January 22, 1993	
SURVEYOR CERTIFICATION I hereby certify that the well location shown on this plat was plotted from field notes of actual surveys made by me or under my supervision, and that the same is true and correct to the best of my knowledge and belief. Date Surveyed: DECEMBER 10, 1992 Signature & Seal of Professional Surveyor: Certificate No. 7977 JOHN W. WEST, 676 RONALD J. SEDSON, 3239 GARY L. JONES, 7977	

RECEIVED

APR 09 1993

GOV. HON. J. J. ...

SUPPLEMENTAL DRILLING DATA

POGO PRODUCING COMPANY
EAST LIVINGSTON RIDGE UNIT WELL NO. 2

1. SURFACE FORMATION: Quaternary.

2. ESTIMATED TOPS OF GEOLOGIC MARKERS:

Rustler	850'
Delaware	4600'
Bell Canyon	4650'
Cherry Canyon	5600'
Brushy Canyon	7300'

3. ANTICIPATED POSSIBLE HYDROCARBON BEARING ZONES:

Brushy Canyon	Oil
---------------	-----

4. PROPOSED CASING AND CEMENTING PROGRAM:

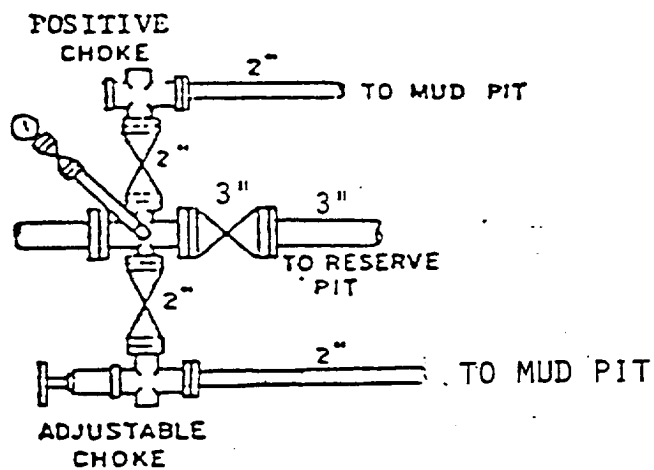
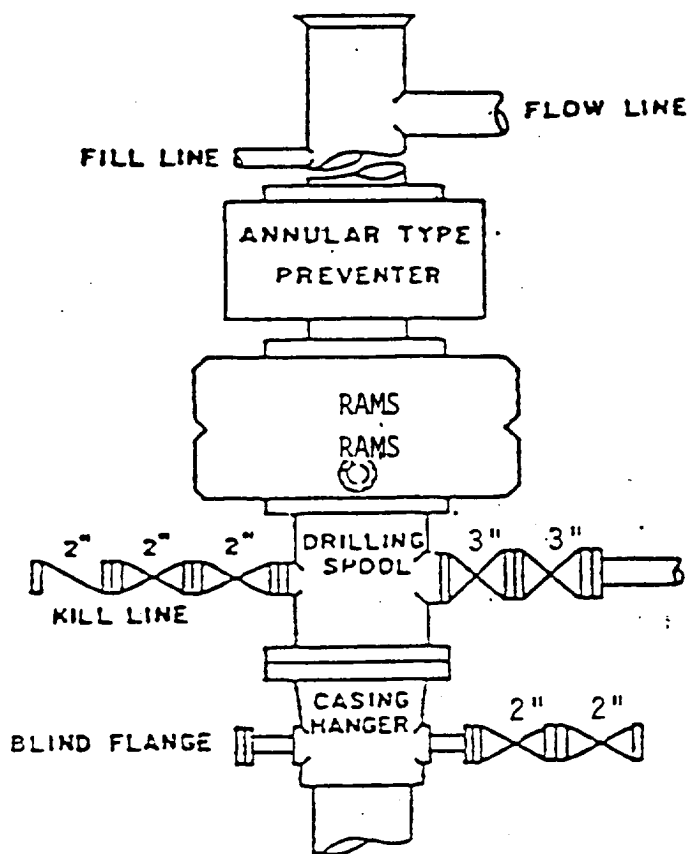
CASING SIZE	SETTING DEPTH		WEIGHT	GRADE	JOINT
	FROM	TO			
13-3/8"	0	850'	54.5#	J-55	STC
8-5/8"	0	1000'	32#	J-55	STC
"	1000'	2200'	24#	J-55	STC
"	2200'	4500'	32#	J-55	STC
"	4500'	4600'	32#	N-80	STC
5-1/2"	0	800'	17#	J-55	LTC
"	800'	5300'	15.5#	J-55	LTC
"	5300'	6300'	17#	J-55	LTC
"	6300'	8800'	17#	N-80	LTC

MINIMUM

DESIGN FACTORS: COLLAPSE 1.125 BURST 1.1 TENSION 1.7

13-3/8" casing to be cemented with 500 sacks of Light cement tailed in with 200 sacks of Class "C" with 2% CaCl. Cement to circulate.

8-5/8" casing to be cemented with 1200 sacks of Light cement with 10% salt tailed in with 200 sacks of Premium cement. Cement to circulate.



BOP STACK

3000 PSI WORKING PRESSURE

BOP ARRANGEMENT