

U. S. DEPARTMENT OF THE INTERIOR  
BUREAU OF LAND MANAGEMENT  
NEW MEXICO

APPLICATION FOR PERMIT TO DRILL, DEEPEN, OR PLUG BACK

1a. TYPE OF WORK

DRILL ☒

DEEPEN ☐

PLUG BACK ☐

b. TYPE OF WELL

OIL WELL ☒

GAS WELL ☐

OTHER ☐

SINGLE ZONE ☐

MULTIPLE ZONE ☐

2. NAME OF OPERATOR

Santa Fe Energy Operating Partners, L.P.

3. ADDRESS OF OPERATOR

550 W. Texas, Suite 1330, Midland, Texas 79701

4. LOCATION OF WELL (Report location clearly and in accordance with any State requirements.)

At surface

(P), 330' FSL and 330' FEL, Sec. 9, T-22S, R-32E

At proposed prod. zone

14. DISTANCE IN MILES AND DIRECTION FROM NEAREST TOWN OR POST OFFICE\*

12 miles Southeast of Halfway Bar, New Mexico

15. DISTANCE FROM PROPOSED\*

LOCATION TO NEAREST

PROPERTY OR LEASE LINE, FT.

(Also to nearest drlg. unit line, if any)

330'

16. NO. OF ACRES IN LEASE

540

17. NO. OF ACRES ASSIGNED TO THIS WELL

40

18. DISTANCE FROM PROPOSED LOCATION\*

TO NEAREST WELL, DRILLING COMPLETED, OR APPLIED FOR, ON THIS LEASE, FT.

N/A

19. PROPOSED DEPTH

8800'

20. ROTARY OR CABLE TOOLS

Rotary

21. ELEVATIONS (Show whether DF, RT, GR, etc.)

3792' GR

22. APPROX. DATE WORK WILL START\*

March 4, 1993

23.

PROPOSED CASING AND CEMENTING PROGRAM

Secretary's Potash

SIZE OF HOLE	SIZE OF CASING	WEIGHT PER FOOT	SETTING DEPTH	QUANTITY OF CEMENT
17-1/2"	13-3/8"	48.0	600'	600 sx to circulate
12-1/4"	8-5/8"	32.0	4500'	2300 sx to circulate
7-7/8"	5-1/2"	15.5 & 17.0	8800'	To tie back to 4300'

We propose to drill to a depth sufficient to test the Delaware formation for oil. If productive, 5-1/2" casing will be cemented at TD. If non-productive, the well will be plugged and abandoned in a manner consistent with Federal Regulations. Specific programs as per Onshore Oil and Gas Order No. 1 are outlined in the following attachments:

Drilling Program

Exhibit A - Operations Plan

Exhibit B - BOP and Choke

Exhibit C - Drilling Fluid Program

Exhibit D - Auxiliary Equipment

Exhibit E - Topo Map of Location

Exhibit F - Plat Showing Existing Wells

Exhibit G - Well Site Layout

Surface Use and Operations Plan

H2S Drilling Operations Plan

IN ABOVE SPACE DESCRIBE PROPOSED PROGRAM: If proposal is to deepen or plug back, give data on present productive zone and proposed new productive zone. If proposal is to drill or deepen directionally, give pertinent data on subsurface locations and measured and true vertical depths. Give blowout preventer program, if any.

24.

SIGNED

Daniel Pohats

TITLE

Sr. Drilling Engineer

DATE

2/16/93

(This space for Federal or State office use)

PERMIT NO.

APPROVAL DATE

APPROVED BY

/s/ Kathy Eaton

TITLE

Acting State Director

DATE

5-17-93

CONDITIONS OF APPROVAL, IF ANY:

APPROVAL SUBJECT TO

GENERAL REQUIREMENTS AND

SPECIAL STIPULATIONS

\*See Instructions On Reverse Side

ATTACHED Section 1001, makes it a crime for any person knowingly and willfully to make to any department or agency of the United States any false, fictitious or fraudulent statements or representations as to any matter within its jurisdiction.

**DISTRICT I**  
P. O. Box 1980  
Hobbs, NM 88240

**DISTRICT II**  
P. O. Drawer DD  
Artesia, NM 88210

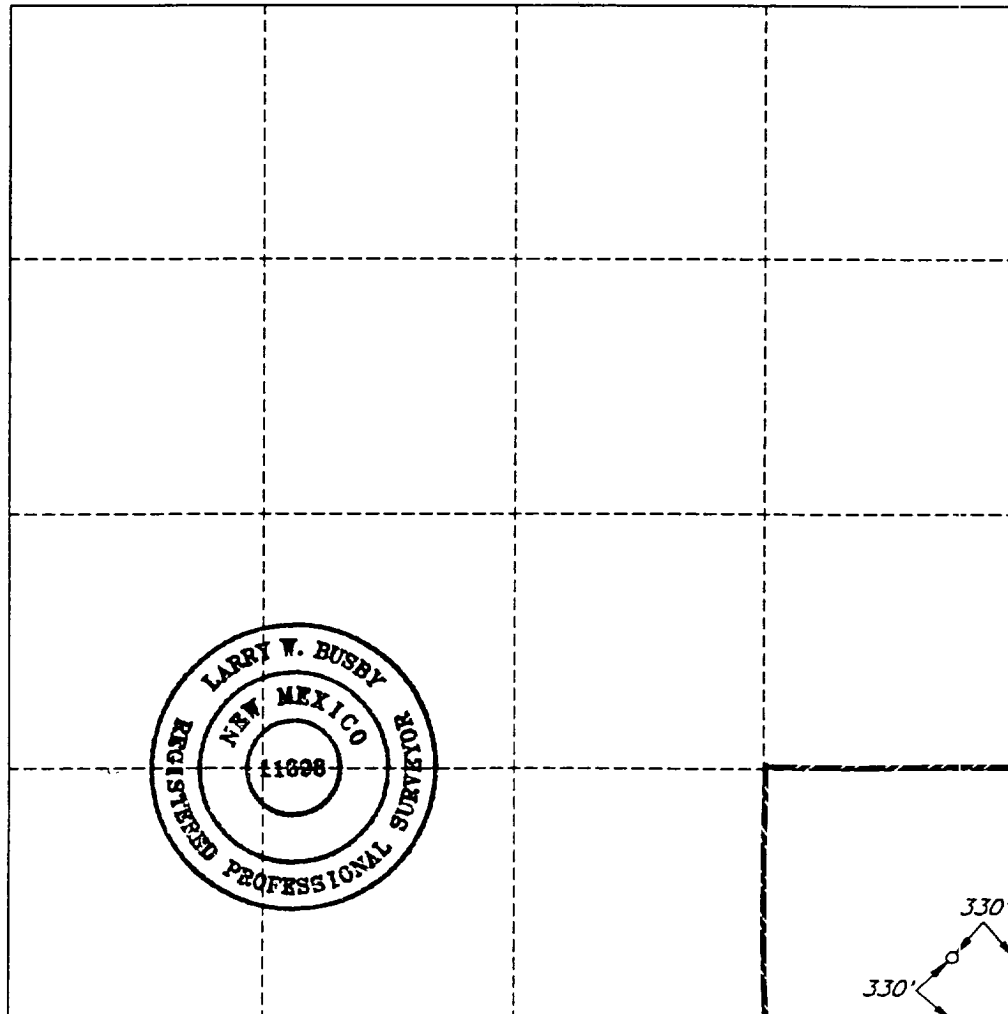
**OIL CONSERVATION DIVISION**  
**P. O. Box 2088**  
**Santa Fe, New Mexico 87504-2088**

**DISTRICT III**  
1000 Rio Brazos Rd  
Aztec, NM 87410

**WELL LOCATION AND ACREAGE DEDICATION PLAT**  
All distances must be from the outer boundaries of the section.

Operator <b>SANTA FE ENERGY OPER. PART. L.P.</b>		Lease <b>WHITE SWAN '9' FEDERAL</b>		Well No. <b>1</b>
Unit Letter <b>P</b>	Section <b>9</b>	Township <b>22 SOUTH</b>	Range <b>32 EAST, N.M.P.M.</b>	County <b>LEA</b>
Actual Footage Location of Well				
330 feet from the <b>SOUTH</b> line and		330 feet from the <b>EAST</b> line		
Ground Level Elev. <b>3792'</b>	Producing Formation <b>Delaware</b>	Pool <b>Livingston Ridge, East (Delaware)</b>		40 Acres

1. Outline the acreage dedicated to the subject well by colored pencil or hatchure marks on the plat below.
2. If more than one lease is dedicated to the well, outline each and identify the ownership thereof (both as to working interest and royalty).
3. If more than one lease of different ownership is dedicated to the well, have the interest of all the owners been consolidated by communitization, unitization, forced-pooling, etc.?  
☐ Yes ☐ No If answer is "yes", type of consolidation \_\_\_\_\_  
If the answer is "no", list the owners and tract descriptions which have actually been consolidated. (Use the reverse side of this form if necessary.) \_\_\_\_\_  
No allowable will be assigned to the well until all interests have been consolidated (by communitization, unitization, forced-pooling, or otherwise) or until a non-standard unit, eliminating such interest, has been approved by the division.



**OPERATOR CERTIFICATION**

I hereby certify that the information herein is true and complete to the best of my knowledge and belief.

Signature

*Darrell Roberts*

Printed Name

Darrell Roberts

Position

Sr. Drilling Engineer

Company Santa Fe Energy  
Operating Partners, L.P.

Date

2/16/93

**SURVEYOR CERTIFICATION**

I hereby certify that the well location shown on this plat was plotted from field notes of actual surveys made by me or under my supervision, and that the same is true and correct to the best of my knowledge and belief.

Date Surveyed

JANUARY 20, 1993

Signature and Seal of  
Professional Surveyor

*Larry W. Busby*

Certificate No.

LARRY W. BUSBY R.P.S. #11398

JOB NO. 94019

V.H.B.

**DRILLING PROGRAM**  
**SANTA FE ENERGY OPERATING PARTNERS, L.P.**  
**White Swan "9" Federal No.1**

In conjunction with Form 3160-3, Application to Drill the subject well, Santa Fe Energy Operating Partners, L.P., submits the following ten items of pertinent information in accordance with Onshore Oil & Gas Order No. 10.

1. **Geologic Name of Surface Formation:** Alluvium

2. **Estimated Tops of Significant Geologic Markers:**

Rustler Anhydrite	875'
Base of Salt	4450'
Delaware Lime	4775'
Delaware Sand	4850'
Cherry Canyon	5800'
Brushy Canyon	7000'
Bone Spring	8720'
Total Depth	8800'

3. **The estimated depths at which water, oil, or gas formations are expected:**

Water	None expected in area
Brine	Salt Section @ $\pm 3300'$
Oil	Delaware @ 7200'-8000'

4. **Proposed Casing Program:** See Form 3160-3 and Exhibit A.

5. **Pressure Control Equipment:** See Exhibit B.

6. **Drilling Fluid Program:** See Exhibit C.

7. **Auxiliary Equipment:** A mud logging unit will be utilized to monitor penetration rate and hydrocarbon shows while drilling below the intermediate casing at 4500'.

8. **Testing, Logging and Coring Program:**

Drill Stem Tests: (all DST's to be justified on the basis of a valid show of oil or gas):

No Drill Stem Tests Planned.

Logging:

Dual Laterolog w/MSFL and Gamma Ray	4500'- 8800'
Compensated Neutron/Litho-Density/Gamma Ray	4500'- 8800'
Compensated Neutron/Gamma Ray (thru csg)	Surface-4500'

Coring:  $\pm 25$  Rotary Sidewall Cores taken at different intervals in Delaware.

# PROPOSED 3-M BOPE AND CHOKE ARRANGEMENT

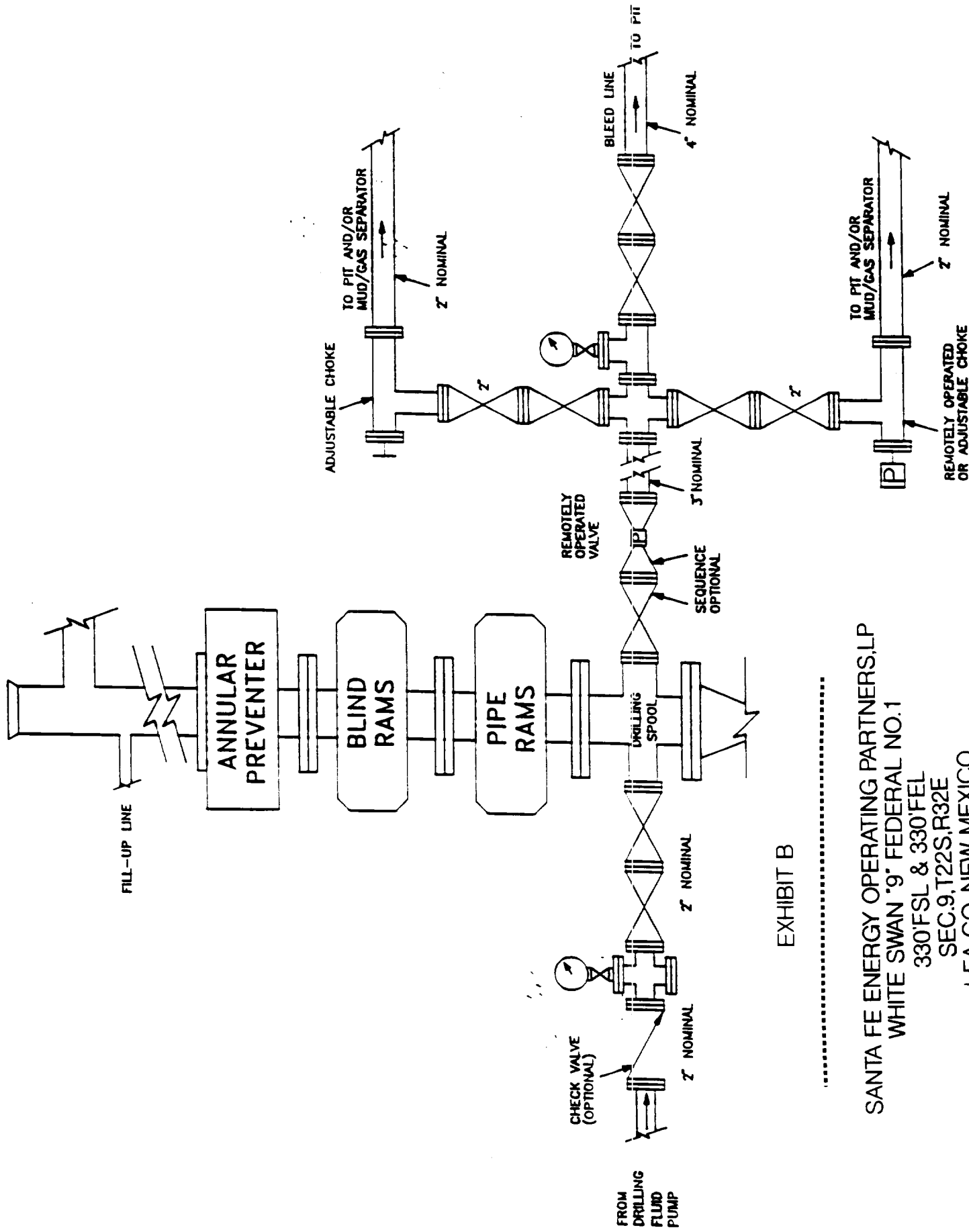


EXHIBIT B

SANTA FE ENERGY OPERATING PARTNERS,LP  
 WHITE SWAN "9" FEDERAL NO.1  
 330'FSL & 330'FEL  
 SEC.9,T22S,R32E  
 LEA CO.,NEW MEXICO

**WARNING**  
**YOU ARE ENTERING**  
**AN H2S AREA**

***TIGHT HOLE LOCATION***

***DO NOT ENTER***  
***UNLESS YOU WERE CALLED!!***

***SANTA FE ENERGY***  
***OPERATING PARTNERS,L.P.***

24 JUN 1993

JUN 07 1993  
OCD HOBBS OFFICE