

OIL CONSERVATION DIVISION

P.O. Box 2088
Santa Fe, New Mexico 87504-2088

DISTRICT I
P.O. Box 1980, Hobbs, NM 88240

DISTRICT II
P.O. Drawer DD, Artesia, NM 88210

DISTRICT III
1000 Rio Brazos Rd., Aztec, NM 87410

WELL LOCATION AND ACREAGE DEDICATION PLAT

All Distances must be from the outer boundaries of the section

Operator POGO PRODUCING COMPANY			Lease COVINGTON "A" FEDERAL		Well No. 8
Unit Letter M	Section 25	Township 22 SOUTH	Range 32 EAST	NMPM	County LEA
Actual Footage Location of Well: 330 feet from the SOUTH line and 660 feet from the WEST line					
Ground Level Elev. 3749.3'	Producing Formation Delaware	Pool Red Tank Delaware West		Dedicated Acreage: 40 Acres	

1. Outline the acreage dedicated to the subject well by colored pencil or hatchure marks on the plat below.

2. If more than one lease is dedicated to the well, outline each and identify the ownership thereof (both as to working interest and royalty).

3. If more than one lease of different ownership is dedicated to the well, have the interest of all owners been consolidated by communitization, unitization, force-pooling, etc.?

☐ Yes ☐ No If answer is "yes" type of consolidation _____

If answer is "no" list of owners and tract descriptions which have actually been consolidated. (Use reverse side of this form necessary.)

No allowable will be assigned to the well unit all interests have been consolidated (by communitization, unitization, forced-pooling, otherwise) or until a non-standard unit, eliminating such interest, has been approved by the Division.

OPERATOR CERTIFICATION

I hereby certify the the information contained herein is true and complete to the best of my knowledge and belief.

Signature

Printed Name

Barrett L. Smith

Position

Senior Operations Engineer

Company

Pogo Producing Company

Date

December 27, 1994

SURVEYOR CERTIFICATION

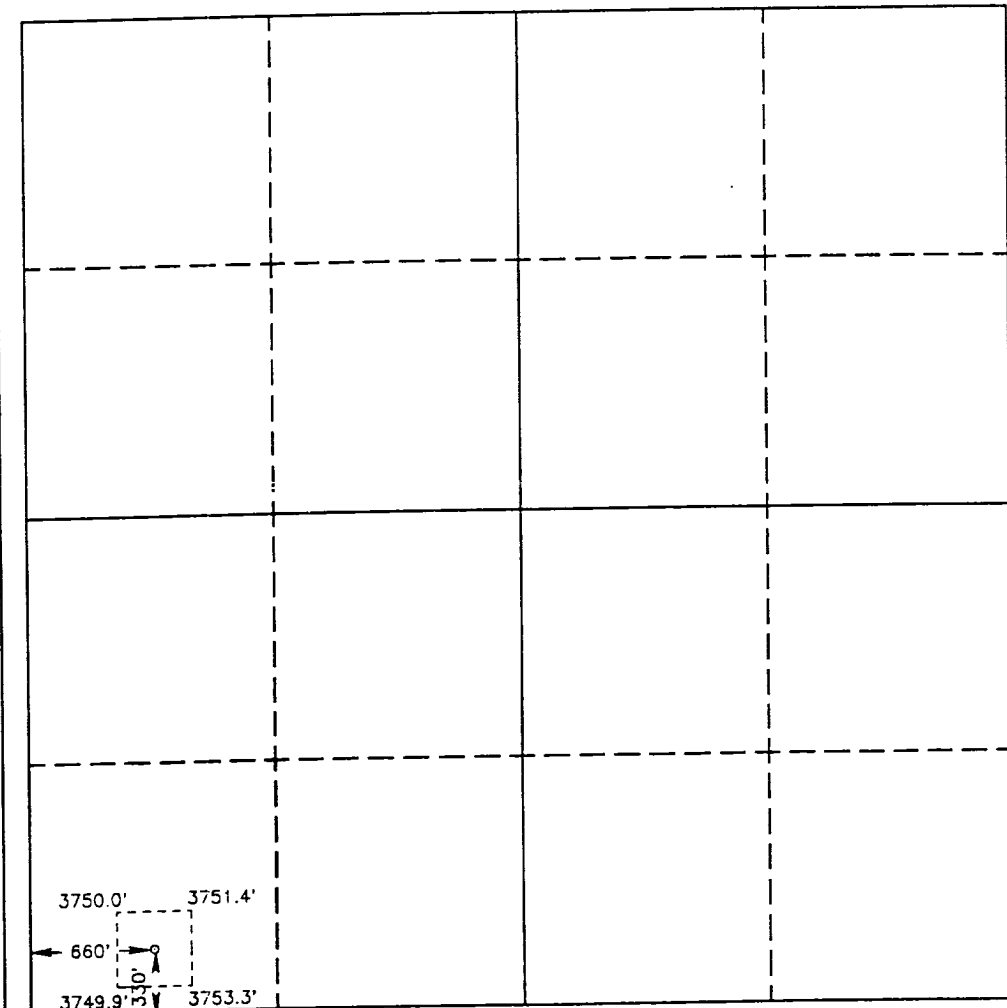
I hereby certify that the well location shown on this plat was plotted from field notes of actual surveys made by me or under my supervision, and that the same is true and correct to the best of my knowledge and belief.

Date Surveyed

SEPTEMBER 22, 1992

Signature & Seal of
Professional Surveyor

Certificate No. 77 JOHN W. WEST 676
RONALD J. EASON 3239
GARY L. JONES 7977



0 330 660 990 1320 1650 1980 2310 2640 2000 1500 1000 500 0