

Submit to Appropriate
District Office
State Lease - 4 copies
Fee Lease - 3 copies

State of New Mexico
Energy, Minerals and Natural Resources Department

Form C-102
Revised 1-1-89

OIL CONSERVATION DIVISION

P.O. Box 2088
Santa Fe, New Mexico 87504-2088

DISTRICT I
P.O. Box 1980, Hobbs, NM 88240

DISTRICT II
P.O. Drawer DD, Artesia, NM 88210

DISTRICT III
1000 Rio Brazos Rd., Aztec, NM 87410

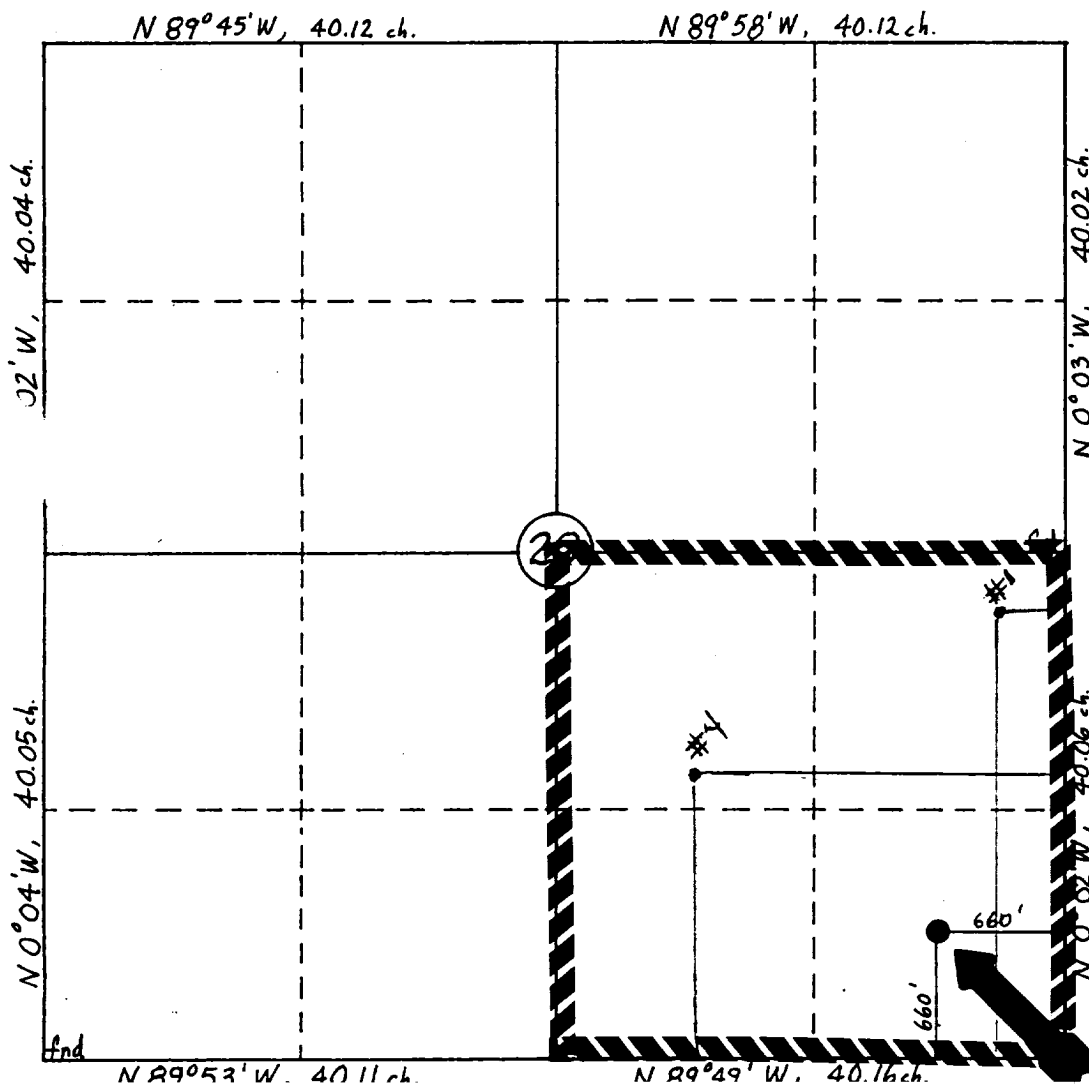
WELL LOCATION AND ACREAGE DEDICATION PLAT

All Distances must be from the outer boundaries of the section

Operator MERIDIAN OIL INC.			Lease STATE "A" 20		Well No. 3
Unit Letter P	Section 20	Township 20 SOUTH	Range 37 EAST	County LEA	NMPM
Actual Footage Location of Well: 660 feet from the SOUTH line and 660 feet from the EAST line					
Ground level Elev. 3510	Producing Formation QUEEN SAND		Pool EUMONT (PRORATED GAS)		Dedicated Acreage: 160 160 Acres

1. Outline the acreage dedicated to the subject well by colored pencil or hatchure marks on the plat below.
2. If more than one lease is dedicated to the well, outline each and identify the ownership thereof (both as to working interest and royalty).
3. If more than one lease of different ownership is dedicated to the well, have the interest of all owners been consolidated by communitization, unitization, force-pooling, etc.?
☐ Yes ☐ No If answer is "yes" type of consolidation _____
If answer is "no" list the owners and tract descriptions which have actually been consolidated. (Use reverse side of this form if necessary.) _____
No allowable will be assigned to the well until all interests have been consolidated (by communitization, unitization, forced-pooling, or otherwise) or until a non-standard unit, eliminating such interest, has been approved by the Division.

0 330 660 990 1320 1650 1980 2310 2640 2000 1500 1000 500 0



OPERATOR CERTIFICATION

I hereby certify that the information contained herein is true and complete to the best of my knowledge and belief.

Signature
DONNA WILLIAMS
Printed Name
PRODUCTION ASSISTANT
Position
MERIDIAN OIL INC.
Company
6/2/93
Date

SURVEYOR CERTIFICATION

I hereby certify that the well location shown on this plat was plotted from field notes of actual surveys made by me or under my supervision, and that the same is true and correct to the best of my knowledge and belief.

5-18-93

Date Surveyed
WILLIAM E. MAHNKE II
Signature & Seal of Professional Surveyor

WILLIAM E. MAHNKE II
NEW MEXICO
#8466
Certification No. 8466
REGISTERED PROFESSIONAL SURVEYOR

NSP-75

62-41-9
JUN 14 1993

JUN 14 1993
LCD HOBBS OFFICE