

# OIL CONSERVATION DIVISION

DISTRICT I  
P.O. Box 1980, Hobbs, NM 88240

P.O. Box 2088  
Santa Fe, New Mexico 87504-2088

**DISTRICT II**  
P.O. Drawer DD, Artesia, NM 88210

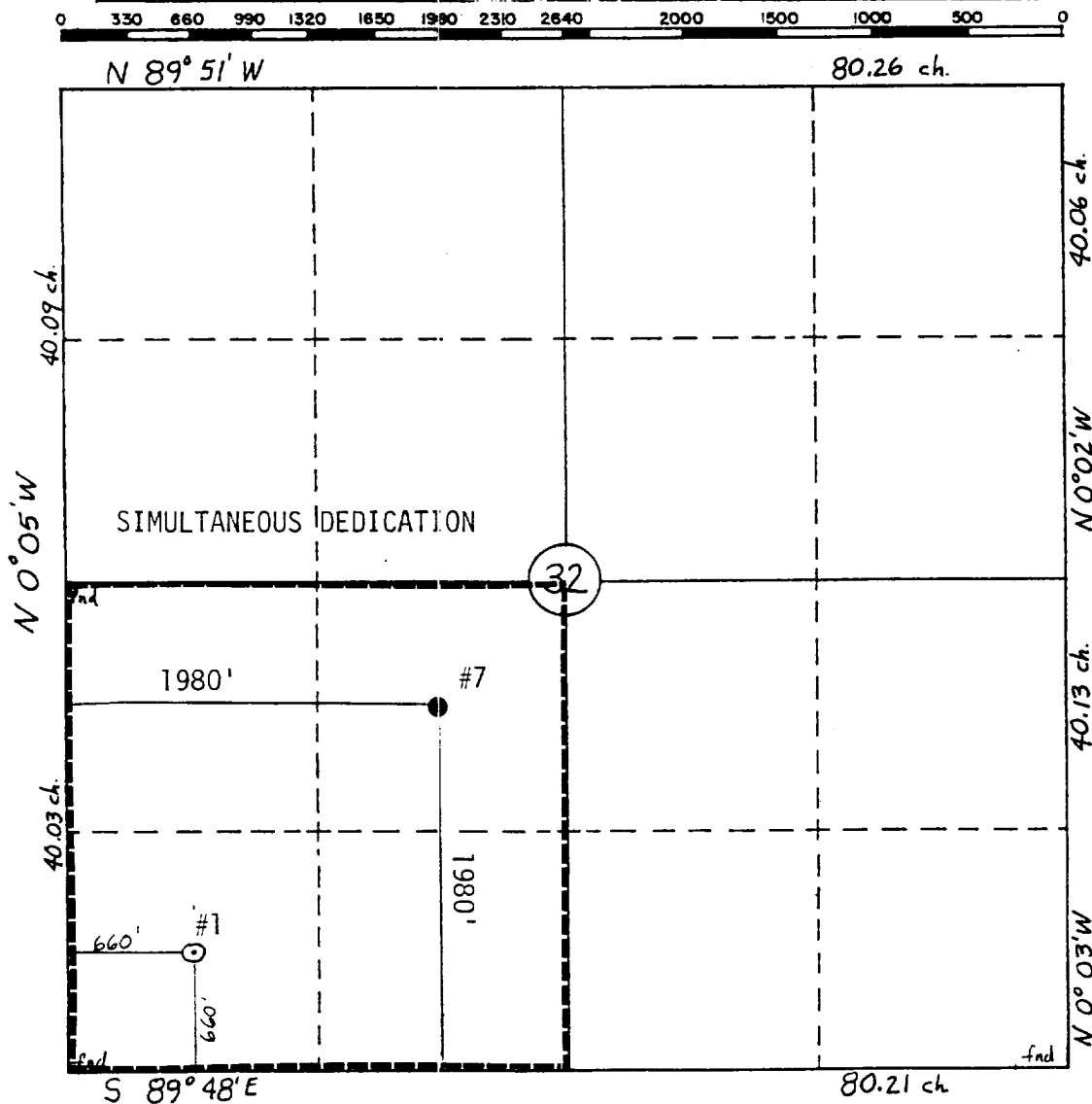
DISTRICT III  
1000 Rio Brazos Rd., Aztec, NM 87410

# WELL LOCATION AND ACREAGE DEDICATION PLAT

**All Distances must be from the outer boundaries of the section**

Operator MERIDIAN OIL INC.		Lease SHELL STATE COM. B		Well No. 7
Unit Letter K	Section 32	Township 20 SOUTH	Range 37 EAST	County LEA
Actual Footage Location of Well:				
1980 feet from the SOUTH		line and 1980 feet from the WEST line		
Ground level Elev. 3539'	Producing Formation QUEEN	Pool EUMONT YATES 7 RIVERS QN PRO GAS		Dedicated Acreage: 160 Acres

1. Outline the acreage dedicated to the subject well by colored pencil or hatchure marks on the plat below.
2. If more than one lease is dedicated to the well, outline each and identify the ownership thereof (both as to working interest and royalty).
3. If more than one lease of different ownership is dedicated to the well, have the interest of all owners been consolidated by communization, unitization, force-pooling, etc.?
- ☒ Yes      ☐ No      If answer is "yes" type of consolidation \_\_\_\_\_
- If answer is "no" list the owners and tract descriptions which have actually been consolidated. (Use reverse side of this form if necessary.) \_\_\_\_\_
- No allowable will be assigned to the well until all interests have been consolidated (by communization, unitization, forced-pooling, or otherwise) or until a non-standard unit, eliminating such interest, has been approved by the Division.



### OPERATOR CERTIFICATION

I hereby certify that the information contained herein is true and complete to the best of my knowledge and belief.

Signature \_\_\_\_\_

Printed Name  
MARIA L. PEREZ

Position  
PRODUCTION ASST.

**Company**  
MERIDIAN OIL INC.

Date  
6-14-93

### SURVEYOR CERTIFICATION

I hereby certify that the well location shown on this plat was plotted from field notes actual surveys made by me or under supervision, and that the same is true & correct to the best of my knowledge & belief.

Date Surveyed  
WILLIAM E. MAHNKE I

Signature & Seal of  
Professional Surveyor

**WILLIAM MAHNKE II**  
NEW MEXICO  
#8466

Certificate No. 8466

REGISTERED PROFESSIONAL SURVEYOR