

OIL CONSERVATION DIVISION

P.O. Box 2088  
Santa Fe, New Mexico 87504-2088

DISTRICT I

P.O. Box 1980, Hobbs, NM 88240

DISTRICT II

P.O. Drawer DD, Artesia, NM 88210

DISTRICT III

1000 Rio Brazos Rd., Aztec, NM 87410

WELL LOCATION AND ACREAGE DEDICATION PLAT

All Distances must be from the outer boundaries of the section

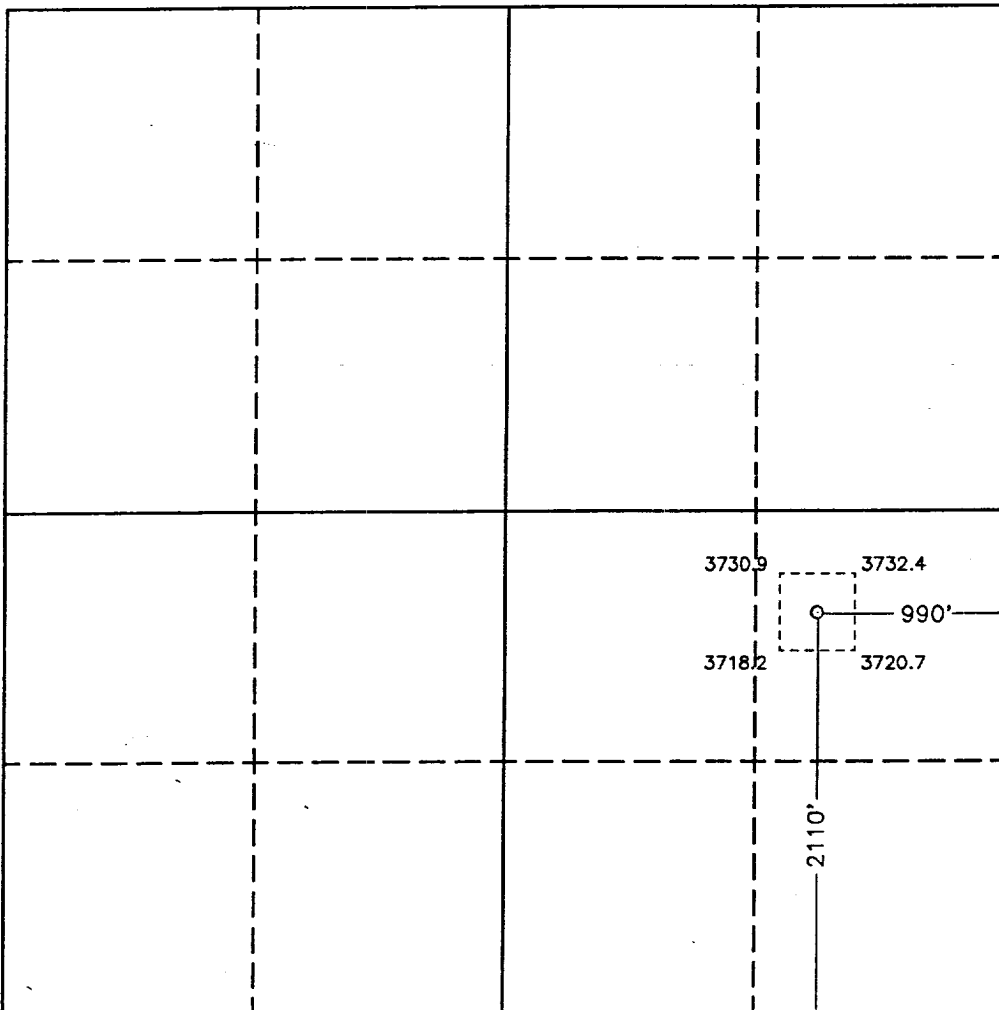
Operator POGO PRODUCING COMPANY			Lease RED TANK 23 FEDERAL		Well No. 2
Unit Letter I	Section 23	Township 22 SOUTH	Range 32 EAST NMPM	County LEA	

Actual Footage Location of Well: 2110 feet from the South line and 990 feet from the East line					
Ground Level Elev. 3721.8	Producing Formation Brushy Canyon	Pool West Red Tank Delaware			Dedicated Acreage: 40 Acres

- Outline the acreage dedicated to the subject well by colored pencil or hachure marks on the plat below.
- If more than one lease is dedicated to the well, outline each and identify the ownership thereof (both as to working interest and royalty).
- If more than one lease of different ownership is dedicated to the well, have the interest of all owners been consolidated by communization, unitization, force-pooling, etc.?  
☐ Yes ☐ No If answer is "yes" type of consolidation \_\_\_\_\_

If answer is "no" list of owners and tract descriptions which have actually been consolidated. (Use reverse side of this form necessary.)

No allowable will be assigned to the well unit all interests have been consolidated (by communization, unitization, forced-pooling, otherwise) or until a non-standard unit, eliminating such interest, has been approved by the Division.



OPERATOR CERTIFICATION

I hereby certify the the information contained herein is true and complete to the best of my knowledge and belief.

Signature  
Barrett L. Smith

Printed Name  
Senior Oper. Engineer

Position  
Pogo Producing Company

Company  
January 11, 1994

Date

SURVEYOR CERTIFICATION

I hereby certify that the well location shown on this plat was plotted from field notes of actual surveys made by me or under my supervision, and that the same is true and correct to the best of my knowledge and belief.

Date Surveyed  
JUNE 7, 1993

Signature & Seal of  
Professional Surveyor

GARY L. JONES  
NEW MEXICO  
7977  
Certification No. JOHN W. JONES, 878  
RONALD L. JONES, 8289  
BALAN JONES, 7977

93-11-1057