

UNITED STATES  
DEPARTMENT OF THE INTERIOR  
BUREAU OF LAND MANAGEMENT

APPLICATION FOR PERMIT TO DRILL, DEEPEN, OR PLUG BACK

1a. TYPE OF WORK

DRILL ☒

DEEPEN ☐

PLUG BACK ☐

b. TYPE OF WELL

OIL  
WELL ☒

GAS  
WELL ☐

OTHER

SINGLE  
ZONE ☒

MULTIPLE  
ZONE ☐

2. NAME OF OPERATOR

POGO PRODUCING COMPANY

3. ADDRESS OF OPERATOR

P. O. BOX 10340, MIDLAND, TEXAS 79702

4. LOCATION OF WELL (Report location clearly and in accordance with any State requirements.)

At surface

1980' FNL AND 2310' FEL OF SECTION 22

At proposed prod. zone

Unit 6

14. DISTANCE IN MILES AND DIRECTION FROM NEAREST TOWN OR POST OFFICE\*

30 MILES WEST OF EUNICE, NEW MEXICO

15. DISTANCE FROM PROPOSED\*

LOCATION TO NEAREST

PROPERTY OR LEASE LINE, FT.

(Also to nearest drlg. unit line, if any)

330'

16. NO. OF ACRES IN LEASE

640

17. NO. OF ACRES ASSIGNED  
TO THIS WELL

40

18. DISTANCE FROM PROPOSED LOCATION\*

TO NEAREST WELL, DRILLING, COMPLETED,  
OR APPLIED FOR, ON THIS LEASE, FT.

6600'

19. PROPOSED DEPTH

9000'

20. ROTARY OR CABLE TOOLS

ROTARY

21. ELEVATIONS (Show whether DF, RT, GR, etc.)

3713.6' GR

22. APPROX. DATE WORK WILL START\*

UPON APPROVAL

23. PROPOSED CASING AND CEMENTING PROGRAM

SIZE OF HOLE	SIZE OF CASING	WEIGHT PER FOOT	SETTING DEPTH	QUANTITY OF CEMENT
17-1/2"	13-3/8"	54.5#	800'	SUFFICIENT TO CIRCULATE
11"	8-5/8"	32#	4600'	SUFFICIENT TO CIRCULATE
7-7/8"	5-1/2"	17#	9000'	TO TIE BACK TO 3600'

AFTER SETTING PRODUCTION CASING, PAY ZONE WILL BE PERFORATED  
AND STIMULATED AS NECESSARY.

SEE ATTACHED FOR: SUPPLEMENTAL DRILLING DATA  
BOP SKETCH  
SURFACE USE AND OPERATIONS PLAN  
HYDROGEN SULFIDE DRILLING OPERATIONS PLAN

IN ABOVE SPACE DESCRIBE PROPOSED PROGRAM: If proposal is to deepen or plug back, give data on present productive zone and proposed new productive zone. If proposal is to drill or deepen directionally, give pertinent data on subsurface locations and measured and true vertical depths. Give blowout preventer program, if any.

SIGNED

Richard L. Wright

TITLE

Division Operations Mgr.

DATE

December 3, 1993

(This space for Federal or State office use)

PERMIT NO.

APPROVAL DATE

(ORIG. SGD.) RICHARD L. MANTIS

TITLE

AREA MANAGER

DATE

JAN 24 1994

CONDITIONS OF APPROVAL, IF ANY:

\*See Instructions On Reverse Side

Title 18 U.S.C. Section 1001, makes it a crime for any person knowingly and willfully to make to any department or agency of the United States any false, fictitious or fraudulent statements or representations as to any matter within its jurisdiction.

**OIL CONSERVATION DIVISION**

DISTRICT I  
P.O. Box 1980, Hobbs, NM 88240

P.O. Box 2088

Santa Fe, New Mexico 87504-2088

DISTRICT II  
P.O. Drawer DD, Artesia, NM 88210

DISTRICT III  
1000 Rio Brazos Rd., Aztec, NM 87410

**WELL LOCATION AND ACREAGE DEDICATION PLAT**

All Distances must be from the outer boundaries of the section

Operator POGO PRODUCING COMANY			Lease PRIZE FEDERAL		Well No. 9
Unit Letter G	Section 22	Township 22 SOUTH	Range 32 EAST	County LEA	

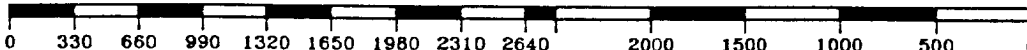
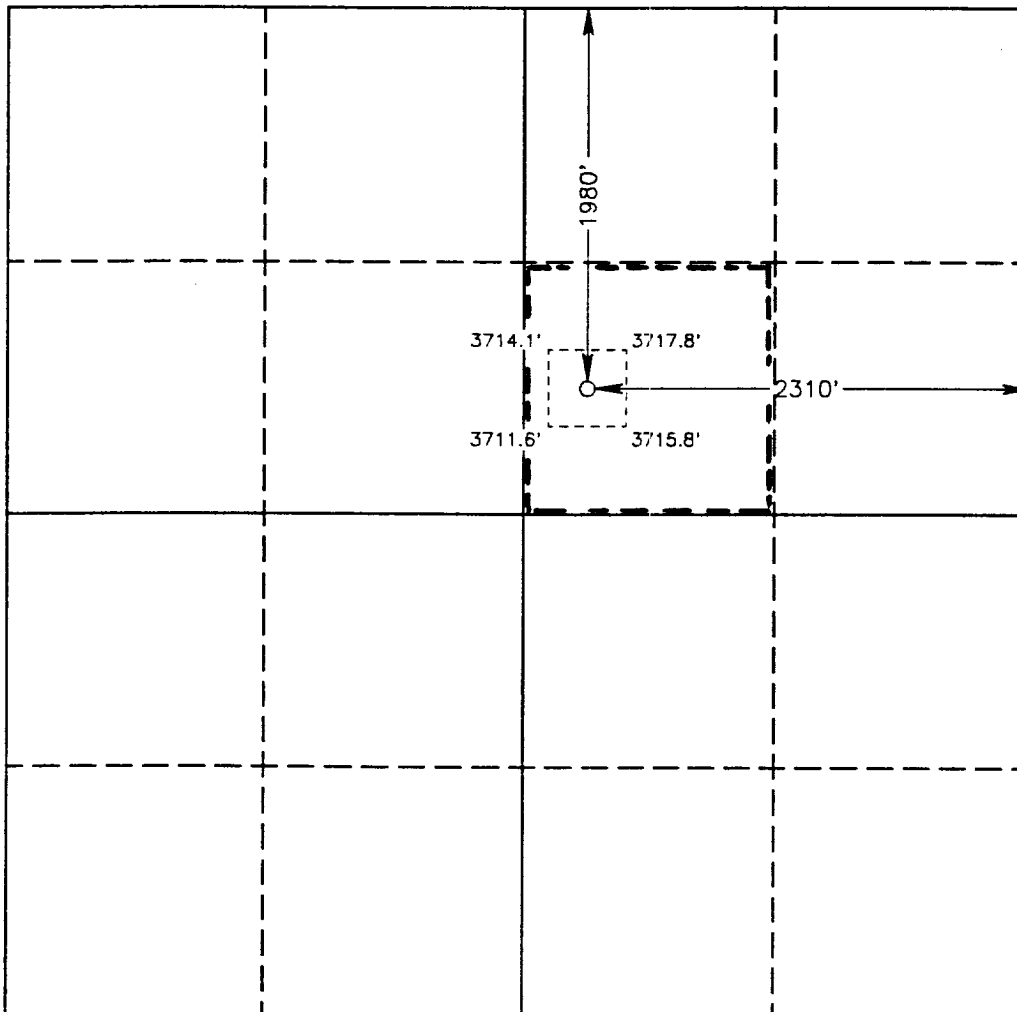
Actual Footage Location of Well:

1980 feet from the NORTH line and		2310 feet from the EAST line	
Ground Level Elev. 3713.6'	Producing Formation BONE SPRINGS	Pool UNDES. RED TANK BONE SPRINGS	Dedicated Acreage: 40 Acres

1. Outline the acreage dedicated to the subject well by colored pencil or hatchure marks on the plat below.
2. If more than one lease is dedicated to the well, outline each and identify the ownership thereof (both as to working interest and royalty).
3. If more than one lease of different ownership is dedicated to the well, have the interest of all owners been consolidated by communitization, unitization, force-pooling, etc.?  
☐ Yes ☐ No If answer is "yes" type of consolidation \_\_\_\_\_

If answer is "no" list of owners and tract descriptions which have actually been consolidated. (Use reverse side of this form necessary.)

No allowable will be assigned to the well unit all interests have been consolidated (by communitization, unitization, forced-pooling, otherwise) or until a non-standard unit, eliminating such interest, has been approved by the Division.



**OPERATOR CERTIFICATION**

I hereby certify that the information contained herein is true and complete to the best of my knowledge and belief.

Signature *Richard L. Wright*

Printed Name  
Richard L. Wright

Position  
Division Operations Mgr.

Company  
Pogo Producing Company

Date  
December 3, 1993

**SURVEYOR CERTIFICATION**

I hereby certify that the well location shown on this plat was plotted from field notes of actual surveys made by me or under my supervision, and that the same is true and correct to the best of my knowledge and belief.

Date Surveyed  
MARCH 23, 1993

Signature & Seal of  
Professional Surveyor

*Gary L. Jones*  
GARY L. JONES  
NEW MEXICO  
1977  
Certificate No. JOHN W. WEST, 676  
RONALD J. EIDSON, 3239  
PROFESSIONAL SURVEYOR GARY L. JONES, 7977  
95-11-0468

SUPPLEMENTAL DRILLING DATA

POGO PRODUCING COMPANY

PRIZE FEDERAL WELL NO. 9

1. SURFACE FORMATION: Quaternary.

2. ESTIMATED TOPS OF GEOLOGIC MARKERS:

Anhydrite	850'
Delaware Lime	4800'
Cherry Canyon	6100'
Brushy Canyon	7400'
Bone Springs	8800'

3. ANTICIPATED POSSIBLE HYDROCARBON BEARING ZONES:

Delaware	Oil
Bone Springs	Oil

4. PROPOSED CASING AND CEMENTING PROGRAM:

CASING SIZE	SETTING DEPTH		WEIGHT	GRADE	JOINT
	FROM	TO			
13-3/8"	0	800'	54.5#	J-55	STC
8-5/8"	0	4300'	32#	J-55	STC
"	4300'	4600'	32#	S-80	STC
5-1/2"	0	1000'	17#	N-80	LTC
"	1000'	7000'	17#	J-55	LTC
"	7000'	9000'	17#	N-80	LTC

MINIMUM

DESIGN FACTORS: COLLAPSE 1.125 BURST 1.1 TENSION 1.7

13-3/8" casing to be cemented with 500 sacks of light cement tailed in with 200 sacks of Class "C" with 2% CaCl. Cement to circulate.

8-5/8" casing to be cemented with 1200 sacks of light cement with 10% salt tailed in with 200 sacks of premium cement with 1% CaCl. Cement to circulate.

5-1/2" production casing is to be cemented with approximately 500 sacks

of light cement followed by 400 sacks of premium cement. Cement to tie back to 3600 feet.

If, during drilling operations, need for stage cementing of casing is indicated, staging tool(s) will be run and positioned to best suit hole conditions at time casing is run.

Cement volumes may be adjusted and cement may have lost circulation and/or other additives depending on hole conditions at the time casing is run.

#### 5. PRESSURE CONTROL EQUIPMENT:

Blowout prevention equipment, while drilling the 11" hole, will be either a 3000 psi working pressure double ram type preventer or a 3000 psi working pressure annular type preventer.

Blow out prevention equipment, while drilling below the 8-5/8" casing seat, will be a 3000 psi working pressure BOP stack. A BOP sketch is attached.

#### 6. CIRCULATING MEDIUM:

Surface to 800 feet: Fresh water spud mud. Viscosity 30 to 36 as required for hole cleaning.

800 feet to 4600 feet: Brine conditioned as necessary for control of viscosity. Weight 9.8 to 10. pH 9 to 10. Viscosity 32 to 36.

4600 feet to T.D.: Water base drilling fluid conditioned as necessary for control of weight, viscosity, pH and water-loss. Weight 9 to 10. Viscosity 38-45. pH 9 to 10. Filtrate while drilling pay zone 6 to 15.

#### 7. AUXILIARY EQUIPMENT:

A mud logging trailer will be in use while drilling below the intermediate casing.

8. TESTING, LOGGING, AND CORING PROGRAM:

Drill stem tests will be made when well data indicate a test is warranted.

It is planned that electric logs will include GR-CNL-Density logs and GR-DLL logs.

No coring is planned.

9. ABNORMAL PRESSURES, TEMPERATURES, OR HYDROGEN SULFIDE GAS:

No abnormal pressures or temperatures are expected.

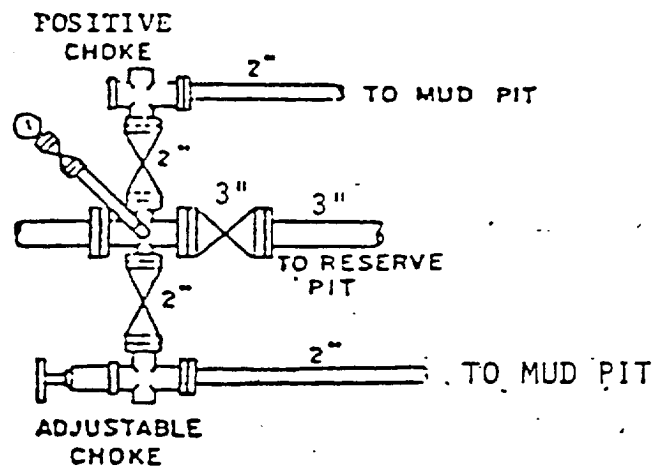
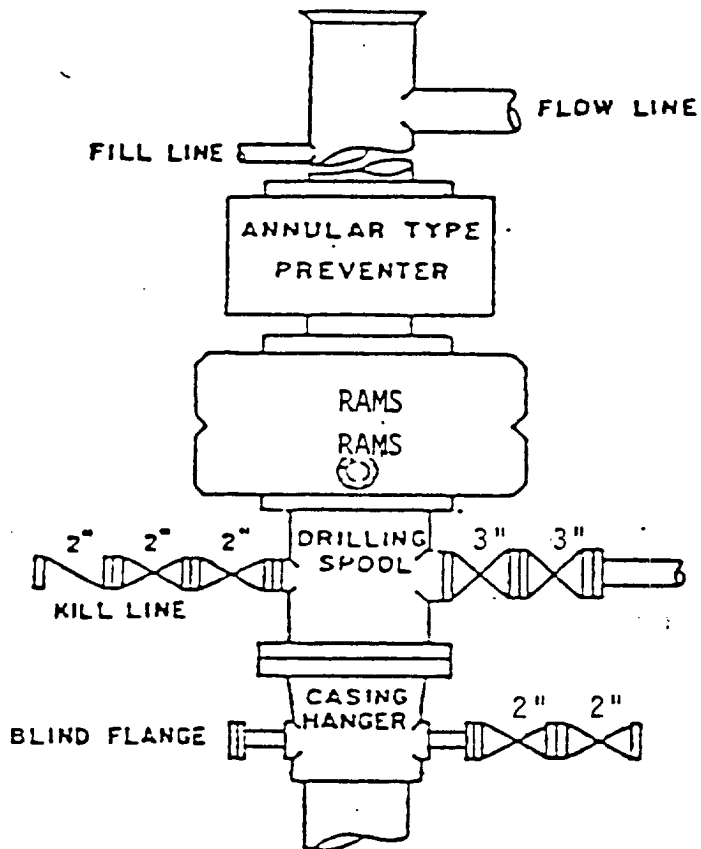
Expected bottom hole pressure is about 3600 psi.

Expected bottom hole temperature is about 125 degrees Fahr.

No hydrogen sulfide gas is expected. The production stream of Pogo Producing Company's wells in this area have been tested specifically for hydrogen sulfide gas and test results were negative. However, since it is possible that low-volume hydrogen sulfide gas may be present in permeable water zones of the Castile formation, drilling operations below the surface casing will be in accordance with the attached "HYDROGEN SULFIDE DRILLING OPERATIONS PLAN" until intermediate casing is set and cemented and this possible source of hydrogen sulfide gas is cased off.

10. ANTICIPATED STARTING DATE:

It is planned that operations will commence upon approval of this application, with drilling and completion operations lasting about 30 days.



BOP STACK

3000 PSI WORKING PRESSURE

BOP ARRANGEMENT