

APPLICATION FOR PERMIT TO DRILL, DEEPEN, OR PLUG BACK

1a. TYPE OF WORK

DRILL ☒

DEEPEN ☐

PLUG BACK ☐

b. TYPE OF WELL

OIL
WELL ☒

GAS
WELL ☐

OTHER

SINGLE
ZONE ☐

MULTIPLE
ZONE ☒

2. NAME OF OPERATOR

Conoco, Inc.

3a. Area Code & Phone No.

(915) 686-6548

3. ADDRESS OF OPERATOR

10 Desta Dr. Ste 100W, Midland, TX 79705

4. LOCATION OF WELL (Report location clearly and in accordance with any State requirements.)*

At surface

1930' FNL & 1980' FEL

At proposed prod. zone

Blinebry-Tubb/Drinkard

Unit G

14. DISTANCE IN MILES AND DIRECTION FROM NEAREST TOWN OR POST OFFICE*

19. DISTANCE FROM PROPOSED*
LOCATION TO NEAREST
PROPERTY OR LEASE LINE, FT.
(Also to nearest drilg. unit line, if any)

16. NO. OF ACRES IN LEASE

17. NO. OF ACRES ASSIGNED
TO THIS WELL

40

13. DISTANCE FROM PROPOSED LOCATION*
TO NEAREST WELL, DRILLING, COMPLETED,
OR APPLIED FOR, ON THIS LEASE, FT.

19. PROPOSED DEPTH

6975'

20. ROTARY OR CABLE TOOLS

Rotary

21. ELEVATIONS (Show whether DP, RT, GR, etc.)

3540.4'

Lea County Controlled Water Basin

22. APPROX. DATE WORK WILL START*

5/1/94

23. PROPOSED CASING AND CEMENTING PROGRAM

HOLE SIZE	CASING SIZE	WEIGHT/FOOT	GRADE	THREAD TYPE	SETTING DEPTH	QUANTITY OF CEMENT
12-1/4"	9-5/8"	36#	K-55	ST&C	1500'	700 sx/circ.
8-3/4"	7"	23#	K-55	LT&C	6975'	1220 sx/circ

It is proposed to drill this Blinebry-Tubb/Drinkard oil well according to the plan submitted in the following attachments:

1. Well Location and Acreage Dedication Plat (C-102)
2. Attachment to FORM 3160-3
3. Proposed Well Plan Outline
4. Surface Use Plan
5. EXHIBIT A: New Mexico road map
6. EXHIBIT B.1: Lease road & well location maps
7. EXHIBIT B.2: Well Location Map
8. EXHIBITS B.3: 7.5" Quadrangle Topo Area Map
9. EXHIBIT C.1-C.7: Flowline and powerline plats
10. EXHIBIT D: Rig Layout Plan
11. BOP Specifications
12. H2S Drilling Operations Plan

IN ABOVE SPACE DESCRIBE PROPOSED PROGRAM: If proposal is to deepen or plug back, give data on present production and whether or not a new productive zone. If proposal is to drill or deepen directionally, give pertinent data on subsurface locations and measured and true vertical depths. Give blowout preventer program, if any.

24.

SIGNED

TITLE Sr. Conservation Coordinator DATE 2/24/94

(This space for Federal or State office use)

PERMIT NO.

APPROVAL DATE

APPROVED BY

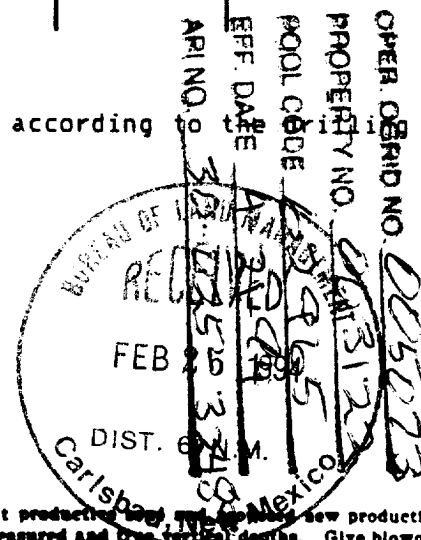
TITLE

DATE

CONDITIONS OF APPROVAL, IF ANY:

Approval Subject to
Environmental Requirements and
Conservation Regulations
APR 1994

*See Instructions On Reverse Side



RECEIVED

APR 20 1994

OFFICE

OIL CONSERVATION DIVISION

P.O. Box 2088
Santa Fe, New Mexico 87504-2088

DISTRICT I

P.O. Box 1980, Hobbs, NM 88240

DISTRICT II

P.O. Drawer DD, Artesia, NM 88210

DISTRICT III

1000 Rio Brazos Rd., Aztec, NM 87410

WELL LOCATION AND ACREAGE DEDICATION PLAT

All Distances must be from the outer boundaries of the section

Operator CONOCO INC.			Lease WARREN UNIT		Well No. 112
Unit Letter G	Section 28	Township 20 SOUTH	Range 38 EAST	NMPM	County LEA

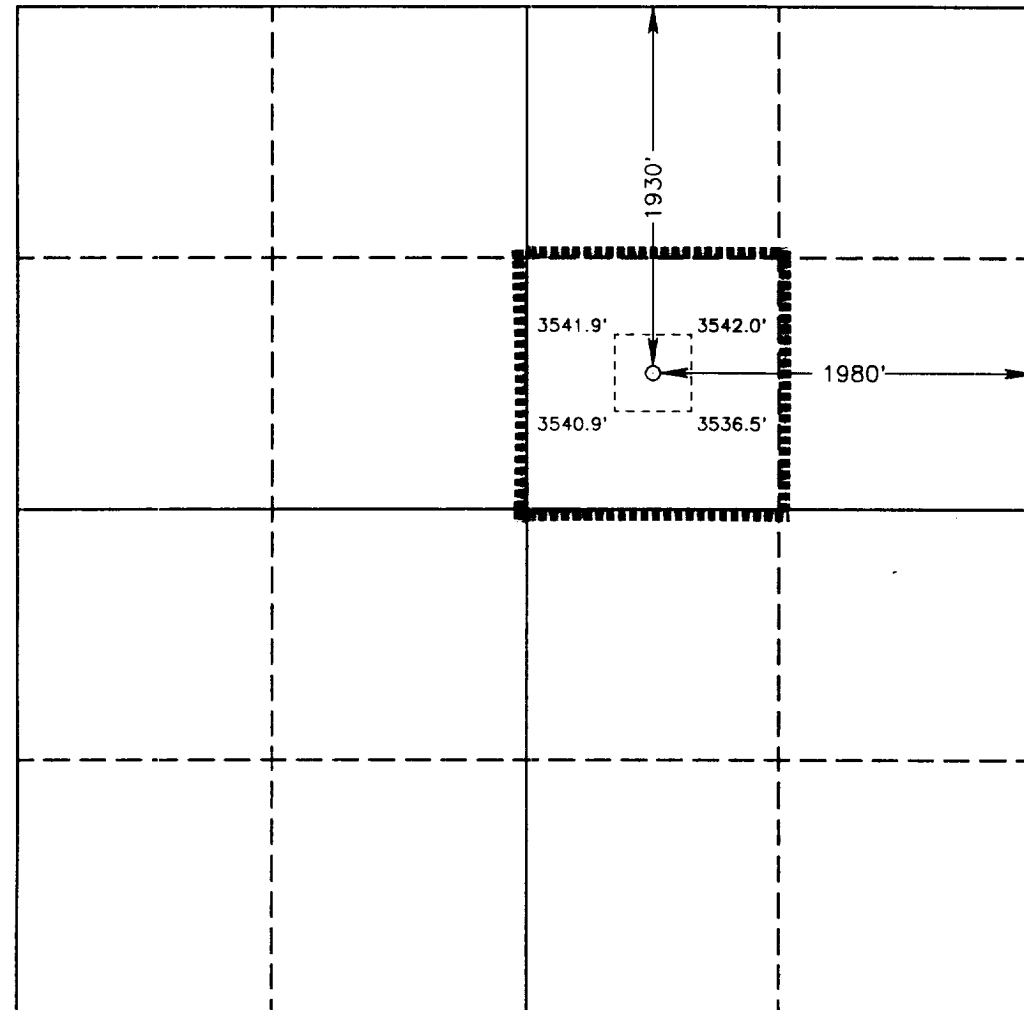
Actual Footage Location of Well:

1930 feet from the NORTH line and		1980 feet from the EAST line	
Ground Level Elev. 3540.4'	Producing Formation Blinebry-Tubb	Pool Warren Blinebry-Tubb	Dedicated Acreage: 40 Acres

- Outline the acreage dedicated to the subject well by colored pencil or hatchure marks on the plat below.
- If more than one lease is dedicated to the well, outline each and identify the ownership thereof (both as to working interest and royalty).
- If more than one lease of different ownership is dedicated to the well, have the interest of all owners been consolidated by communitization, unitization, force-pooling, etc.?
☐ Yes ☐ No If answer is "yes" type of consolidation _____

If answer is "no" list of owners and tract descriptions which have actually been consolidated. (Use reverse side of this form necessary.)

No allowable will be assigned to the well unit all interests have been consolidated (by communitization, unitization, forced-pooling, otherwise) or until a non-standard unit, eliminating such interest, has been approved by the Division.



OPERATOR CERTIFICATION

I hereby certify the the information contained herein is true and complete to the best of my knowledge and belief.

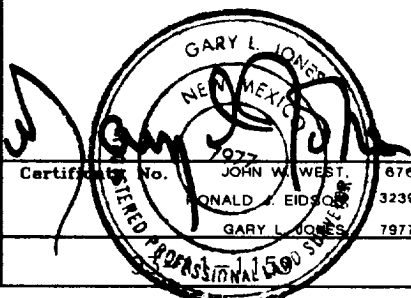
Signature
Jerry W. Hoover
Printed Name
Jerry W. Hoover
Position
Sr. Conservation Coordinator
Company
Conoco Inc.
Date
2/22/94

SURVEYOR CERTIFICATION

I hereby certify that the well location shown on this plat was plotted from field notes of actual surveys made by me or under my supervision, and that the same is true and correct to the best of my knowledge and belief.

Date Surveyed
JUNE 29, 1993

Signature & Seal of
Professional Surveyor



0 330 660 990 1320 1650 1980 2310 2640 2000 1500 1000 500 0

RECEIVED

APR 20 1994

OFFICE

ATTACHMENT TO FORM 3160-3
APPLICATION FOR PERMIT TO DRILL

Conoco Inc.

Warren Unit No. 112
Sec. 28, T-20S, R-38E
Lea County, New Mexico

1. The estimated tops of important geologic markers are shown on the attached Proposed Well Plan Outline.
2. The estimated depths at which anticipated water, oil, gas or other mineral-bearing formations to be encountered are shown on the attached Proposed Well Plan Outline.
3. A drawing of Blowout Preventer Specifications is attached. Pipe rams and blinds will be checked to the working pressure of the stack or 70% of the minimum internal yield strength of the casing whichever is less. BOP will be checked when casing string is set.
4. The proposed casing program is as follows:

0-1500':	9-5/8"	36#	K-55
0-6975':	7"	23	K-55
5. The proposed mud program is as follows:

0-1200':	8.4# Fresh
1500'-5600':	10.0# Saturated Brine
5600'-6975':	9.2# Brine w/starch
6. The logging suite will include the following open-hole logs:
1) GR-CAL-DLL-MSFL-CNL-LDT from TD-2500' and 2) CBIL from TD-2500'. A temperature survey will be run to determine the top of cement on each casing string where cement is not circulated.
7. Special Drilling Problems:
 - a) Lost circulation 4000'-5000'.
 - b) Possible differential sticking 5000'-5500'.
8. The anticipated starting date is 5-1-94 with a duration of approximately 17 days.

RECEIVED

APR 20 1994

OFFICE

PROPOSED WELL PLAN OUTLINE

WELL NAME **WARREN UNIT NO.112**

LOCATION **1930'FNL 1980'FEL SECT. 28 T-20S R-38E LEA CO.**

TVD IN 1000'	MD	FORMATION TOPS & TYPE	DRILLING PROBLEMS	TYPE OF FORMATION EVALUATION	HOLE SIZE	CASING SIZE DEPTH	FRAC GRAD	FORMATION PRESSURE GRADIENT	WT	MUD TYPE	DAYS
0			POSSIBLE HOLE ENLARGEMENT & SLOUGHING		12-1/4"				8.4	FRESH	
1		RUSTLER 1430'			8-3/4"	9-5/8" 1500'			10	BRINE	3
2		BASE SALT 2525'		2-MAN MUD LOGGERS 2500' - TD							
3		YATES 2730'									
		7-RIVERS 2985'									5
		GRAYBURG 3575'									
4		SAN ANDRES 4040'		H2S MONITORS AT 4000'				LESS THAN 8.3			
5		GLORIETTA 5355'	POSSIBLE LOST CIRCULATION OR SEEPAGE. W.U.35 HAD STUCK PIPE DUE TO DIFFERENTIAL STICKING WHILE DRILLING THRU GLORIETTA								8
6		BLINEBRY 5805'	POSSIBLE SEEPAGE FROM BLINEBRY - TD						9.2	BRINE STARCH	10
		TUBBS 6315'		GR-CAL-DDL-MSFL FROM 2500' - TD							
		DRINKARD 6605'		GR-CAL-FDC-CNL-PE FROM 2500' - TD							
7		TD 6975'		BRING GR-CAL TO SURFACE ON ONE SUITE	7"	6975'		LESS THAN 8.3			17
8											

DATE **01 JANUARY 1994**

APPROVED _____
DRILLING ENGINEER

DIVISION DRILLING SUPERVISOR

RECEIVED

APR 20 1994

OFFICE

**SURFACE USE PLAN
Conoco Inc.**

Warren Unit No. 112

The following is required information concerning the possible effect which the drilling of this well may have on the environment, existing road sites, and surrounding acreage. A copy will be posted on the derrick floor so all contractors and sub-contractors will be aware of all items of this plan.

1. Existing Roads

- A. The proposed well site is 1930' FNL & 1980' FEL, Sec. 28, T-20S, R-38E, Lea County, New Mexico.
- B. Exhibit "A" is a portion of a New Mexico road map and Exhibit "B.2" a lease road map showing existing roads. Directions to the location are as follows:

From Hobbs go south on Hwy. 18 to mile marker 39. Turn west and go 2-1/2 miles, then turn north for 1/4 mile to location.

- C. No improvement or maintenance is anticipated for the existing roads.

2. Planned Access Roads

- A. No new access road will be required.
- B. No turnout will be required.
- C. No culverts will be required.
- D. No gates, cattleguards, or fences will be required.

3. Location of Existing Wells

See Exhibit "B.2"

4. Topographic Map and Well Location

A 7.5" quadrangle topo map of the area is included as Exhibit "B.3".

5. Location of Proposed Facilities if Well is Productive

Blinebry-Tubb production will be moved by flowline to Warren Unit Blinebry-Tubb Battery No. 3 and Drinkard production to Warren Drinkard Battery No. 5 for facility treatment, storage and sales.

6. Water Supply

Fresh water will be secured from the City of Eunice and brine from McCaslands water station in Eunice. All water will be trucked from Eunice, north on highway 18. The route will go north on highway 18 to mile marker 39 and then followed the above described route to location.

RECEIVED

APR 20 1994

OFFICE

7. Source of Construction Materials

Caliche will come from the pit located in the NW NE Sec. 15, T-20S, R-38E.

8. Methods of Handling Waste Disposal

Waste Disposal: Well cuttings will be disposed in reserve pit. Barrel trash containers to be in accessible locations within drill site area during drilling and completion procedures. All detrimental waste will be hauled away. See Exhibit "D" for location of pits. If well is productive, maintenance waste will be placed in special trash cans and hauled away periodically. Any produced water will be collected in tanks until hauled to an approved disposal system, or separate disposal applications will be submitted to survey for appropriate approval.

9. Ancillary Facilities

See Exhibits "C.1-C.7" for flowlines, and powerline plats.

10. Wellsite Layout

See Exhibit "D". The V-door faces east. The reserve pit will be lined with plastic and the pad and pits are staked.

11. Plans for Restoration of Surface

Pits will be backfilled and leveled to original condition when they are dry. Commencement of rehabilitation operations will immediately follow removal of drilling and completion equipment from location and rehabilitation of the surface is planned to be completed within 45 days from commencement.

12. Surface Ownership

Federal.

13. Other Information

An archaeological survey will be done on Federal Land crossed by the flowlines and powerline in Sec. 28.

14. Operator's Representative and Certification

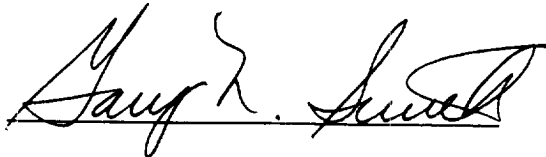
The person who can be contacted concerning compliance of this Surface Use Plan is:

**Jerry W. Hoover
10 Desta Drive West
Midland, Texas 79705
(915) 686-6548**

RECEIVED
APR 20 1994

OFFICE

I hereby certify that I, or persons under my direct supervision, have inspected the proposed drilling site; that I am familiar with the conditions which currently exist; that the statements made in this plan, are, to the best of my knowledge, true and correct; and that the work associated with operations proposed herein will be performed by Conoco Inc. and its contractors and subcontractors in conformity with this plan and the terms and conditions under which it is approved. This statement is subject to the provisions of 18 U.S.C. 1001 for the filing of a false statement.

A handwritten signature in black ink, appearing to read "Gary L. Smith", written over a horizontal line.

Gary L. Smith,
Drilling Manager

24 FEB 1994

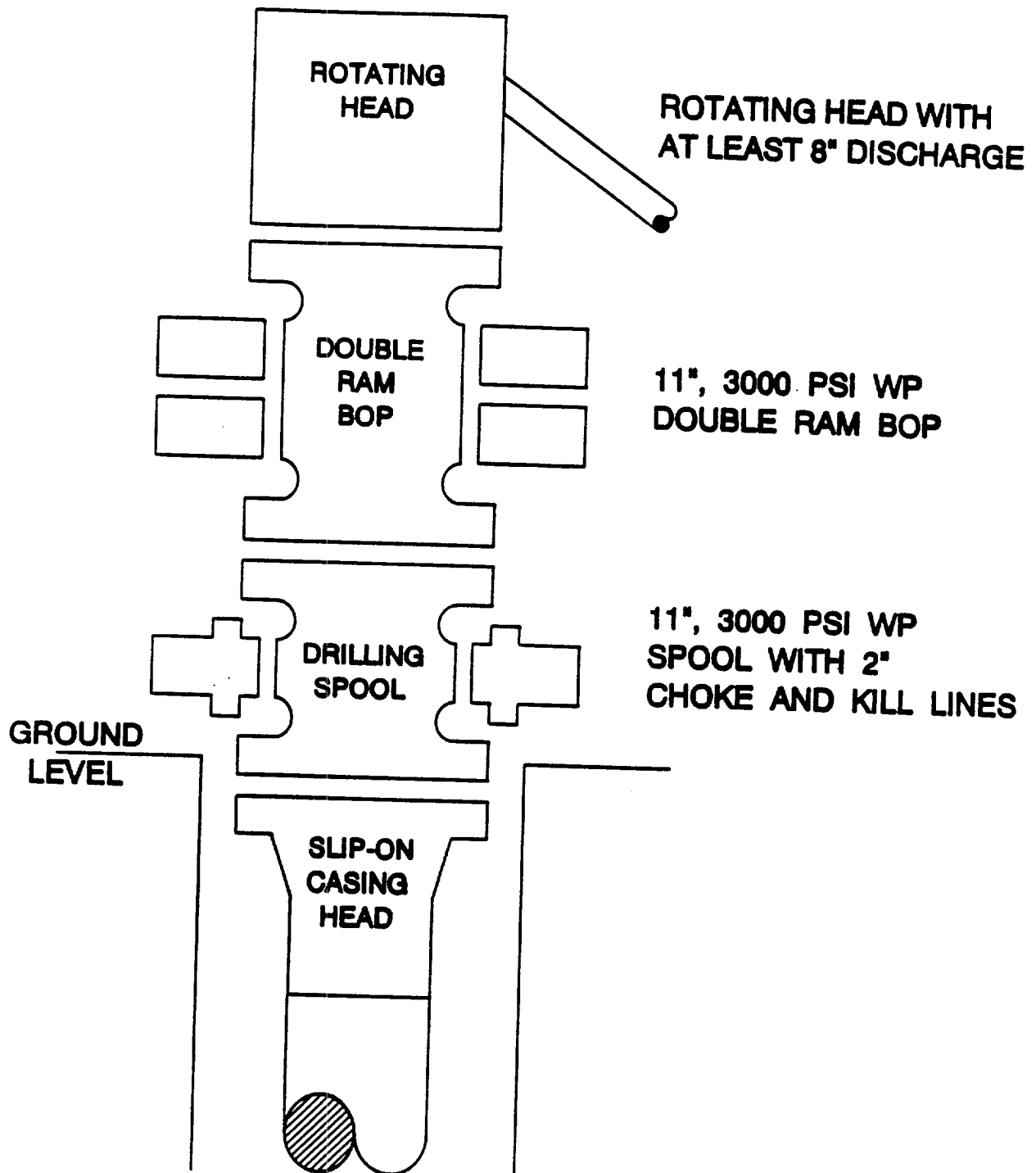
Date

RECEIVED

APR 20 1994

OFFICE

BOP SPECIFICATIONS



RECEIVED

APR 20 1994

U.S. DEPT. OF JUSTICE
OFFICE

46-81-b