

District I
PO Box 1980, Hobbs, NM 88241-1980
District II
PO Drawer DD, Artesia, NM 88211-0719
District III
1000 Rio Brazos Rd., Aztec, NM 87410
District IV
PO Box 2088, Santa Fe, NM 87504-2088

State of New Mexico
Energy, Minerals & Natural Resources Department

OIL CONSERVATION DIVISION
PO Box 2088
Santa Fe, NM 87504-2088

Form C-101
Revised February 21, 1994
Instructions on back
Submit to Appropriate District Office
State Lease - 6 Copies
Fee Lease - 5 Copies

☐ AMENDED REPORT

APPLICATION FOR PERMIT TO DRILL, RE-ENTER, DEEPEN, PLUGBACK, OR ADD A ZONE

¹ Operator Name and Address. CONOCO INC. 10 DESTA DRIVE STE 100W MIDLAND, TEXAS 79705		² OGRID Number 005073
		³ API Number 30-025-32513
⁴ Property Code 29760	⁵ Property Name Hardy 36 State	⁶ Well No. 4

⁷ Surface Location

UL or lot no.	Section	Township	Range	Lot Idn	Feet from the	North/South line	Feet from the	East/West line	County
J	36	20S	37E		1880	South	1680	East	Lea

⁸ Proposed Bottom Hole Location If Different From Surface

UL or lot no.	Section	Township	Range	Lot Idn	Feet from the	North/South line	Feet from the	East/West line	County

⁹ Proposed Pool 1 Hardy-Tubb Drinkard	¹⁰ Proposed Pool 2
---	-------------------------------

¹¹ Work Type Code N	¹² Well Type Code O	¹³ Cable/Rotary R	¹⁴ Lease Type Code S	¹⁵ Ground Level Elevation 3490'
¹⁶ Multiple No	¹⁷ Proposed Depth 6975'	¹⁸ Formation Tubb-Drinkard	¹⁹ Contractor	²⁰ Spud Date 6/1/94

²¹ Proposed Casing and Cement Program

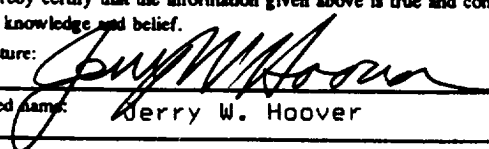
Hole Size	Casing Size	Casing weight/foot	Setting Depth	Sacks of Cement	Estimated TOC
12-1/4"	9-5/8"	40#	1500'	700	Surface
8-3/4"	7"	26#	6975'	1800	Surface

²² Describe the proposed program. If this application is to DEEPEN or PLUG BACK give the data on the present productive zone and proposed new productive zone. Describe the blowout prevention program, if any. Use additional sheets if necessary.

It is proposed to drill this well vertically through the Drinkard formation according to the plan outlined in the following attachments:

1. Well Location & Acreage Dedication Plat (C-102)
2. Proposed Well Plan Outline
3. Cementing Program
4. BOP & Choke Manifold Specifications

²³ I hereby certify that the information given above is true and complete to the best of my knowledge and belief.

Signature: 
Printed Name: Jerry W. Hoover
Title: Sr. Conservation Coordinator
Date: 5/16/94
Phone: (915) 686-6548

OIL CONSERVATION DIVISION

Approved by:	Orig. Signed by: Paul Kautz Geologist
Title:	
Approval Date: MAY 18 1994	Expiration Date:
Conditions of Approval: Attached <input type="checkbox"/>	

RECEIVED

March 17, 1994

ASST. DIR.
OFFICE

District I
PO Box 1988, Hobbs, NM 88241-1988
District II
PO Drawer DD, Artesia, NM 88211-9719
District III
1008 Rio Brazos Rd., Aztec, NM 87410
District IV
PO Box 2088, Santa Fe, NM 87504-2088

State of New Mexico
Energy, Minerals & Natural Resources Department

OIL CONSERVATION DIVISION
PO Box 2088
Santa Fe, NM 87504-2088

Form C-102
Revised February 10, 1994
Instructions on back
Submit to Appropriate District Office
State Lease - 4 Copies
Fee Lease - 3 Copies

☐ AMENDED REPORT

WELL LOCATION AND ACREAGE DEDICATION PLAT

API Number		Pool Code 29760	Pool Name Hardy Tubb Drinkard
Property Code 13396	Property Name HARDY 36 STATE		Well Number 4
OGRID No. 005073	Operator Name CONOCO, INC.		Elevation 3490

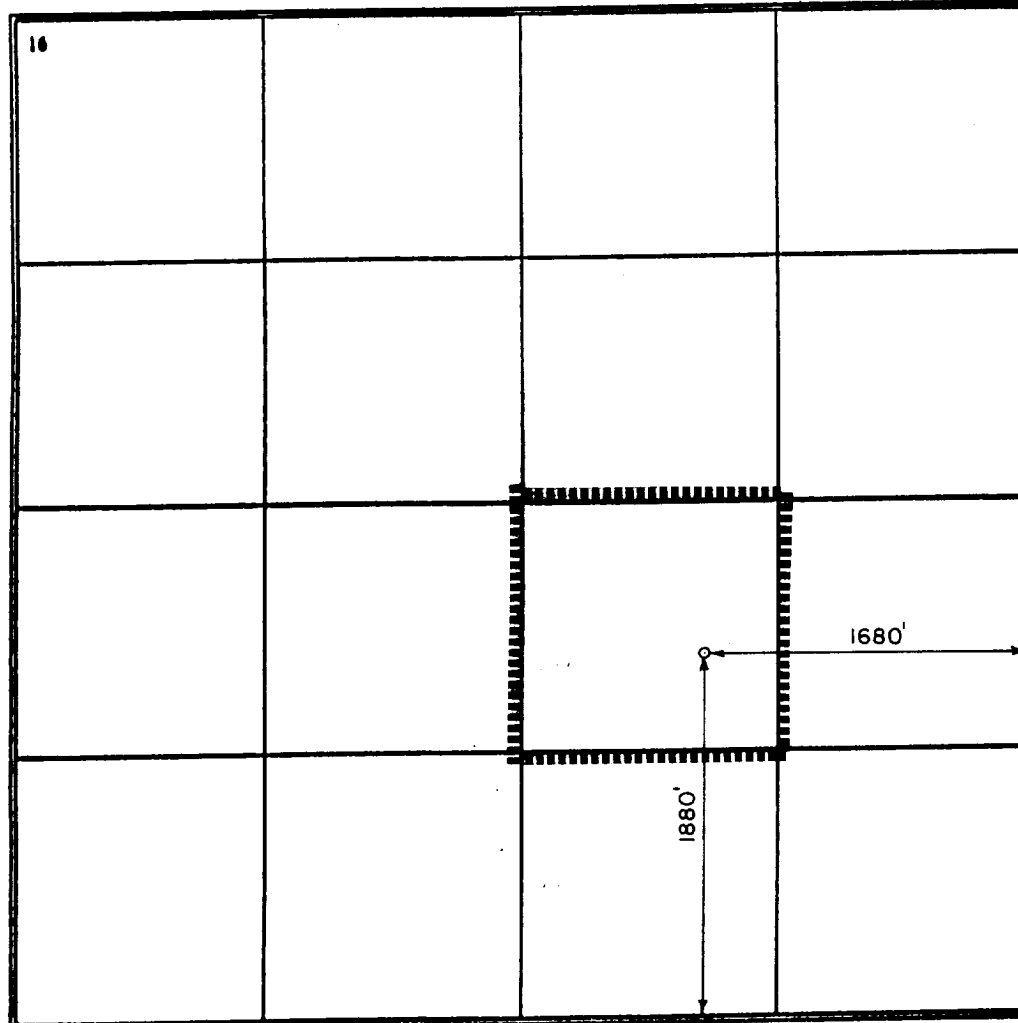
10 Surface Location

UL or lot no.	Section	Township	Range	Lot Idn	Feet from the	North/South line	Feet from the	East/West line	County
J	36	20-S	37-E		1880	SOUTH	1680	EAST	LEA

11 Bottom Hole Location If Different From Surface

UL or lot no.	Section	Township	Range	Lot Idn	Feet from the	North/South line	Feet from the	East/West line	County
Dedicated Acres 40		Joint or Infill		Consolidation Code		Order No.			

NO ALLOWABLE WILL BE ASSIGNED TO THIS COMPLETION UNTIL ALL INTERESTS HAVE BEEN CONSOLIDATED
OR A NON-STANDARD UNIT HAS BEEN APPROVED BY THE DIVISION



17 OPERATOR CERTIFICATION

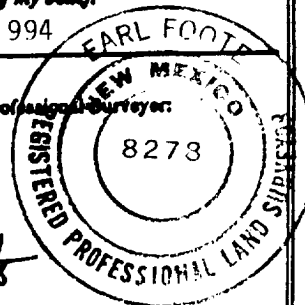
I hereby certify that the information contained herein is true and complete to the best of my knowledge and belief

Jerry W. Hoover
Signature
Jerry W. Hoover
Printed Name
Sr. Conservation Coordinator
Title
5/16/94
Date

18 SURVEYOR CERTIFICATION

I hereby certify that the well location shown on this plat was plotted from field notes of actual surveys made by me or under my supervision, and that the same is true and correct to the best of my belief.

April 12, 1994
Date of Survey
Signature and Seal of Professional Surveyor:
Earl Foote
Certificate Number
8273



RECEIVED

MAY 1 1994

OFFICE

PROPOSED WELL PLAN OUTLINE

WELL NAME **HARDY STATE 36 NO. 4**

LOCATION **1880' FSL 1680' FEL SECT. 36 T-20S R-37E LEA CO.**

TVD IN 1000'	MD	FORMATION TOPS & TYPE	DRILLING PROBLEMS	TYPE OF FORMATION EVALUATION	HOLE SIZE	CASING SIZE DEPTH	FRAC GRAD	FORMATION PRESSURE GRADIENT	WT	MUD TYPE	DAYS
0			POSSIBLE HOLE ENLARGEMENT AND SLOUGHING		12-1/4"				8.4	FRESH	
1		RUSTLER 1430'				9-5/8" 1500' 36# K-55 (700 ms to surface)			10	BRINE	3
2		B/SALT 2525' YATES 2610' 7-RIVERS 2812'		2-MAN MUD LOGGERS ON AT 3500'							
3		GRAYBURG 3784' SAN ANDRES 4009'		H2S MONITOR ON AT 4000'							
4			POSSIBLE LOST CIRCULATION AND SEEPAGE TO TOTAL DEPTH		8-3/4"					BRINE STARCH 10 - 10.2	
5		GLORIETTA 5217' BLINEBRY 5763'	CASES OF DIFFERENTIAL STICKING THROUGH GLORIETTA								
6		TUBB 6306' DRINKARD 6602' TD @ 6975'		GR-CAL-DDL-MSFL 3500' - TD GR-CAL-FDC-CNL-PE 3500' - TD		7" TD 26# K-55 (1800 ms to surface)					17
7											
8											
9											
10											
11											
12											
13											
14											
15											
16											

DATE _____

APPROVED D.W. EUBANK

DRILLING ENGINEER

RECEIVED

MAY 17 1994

**JOE HOBBS
OFFICE**

WELL NAME: HARDY STATE 36 No. 4

LOCATION: 1800 FSL 1680 FEL Sect. 36 T-20S R-37E

Casing Program

Surface 9-5/8 inch in 12-1/4 hole at 1500 ft.
Inter inch in hole at ft.
Prod 7 inch in 8-3/4 hole at 6975 ft.

Cementing Program

Surface

Lead 500 sxs Class C Mixed at 13.7 ppg
Additives 4% GEL 2% A-7 0.2% SNS
Tail 200 sxs Class C Mixed at 14.8 ppg
Additives 2% A-7

Intermediate (first stage)

Lead sxs Class Mixed at ppg
Additives
Tail sxs Class Mixed at ppg
Additives
Percent Free Water Water Loss cc

(second stage)

Lead sxs Class Mixed at ppg
Additives
Tail sxs Class Mixed at ppg
Additives
Percent Free Water Water Loss cc

Production (first stage)

Lead 150 sxs Class C Mixed at 12.8 ppg
Additives 0.2% SMS
Tail 350 sxs Class C Mixed at 14.8 ppg
Additives 1% RA-10 0.2% SMS 1% A-7
Percent Free Water Water Loss cc

(second stage)

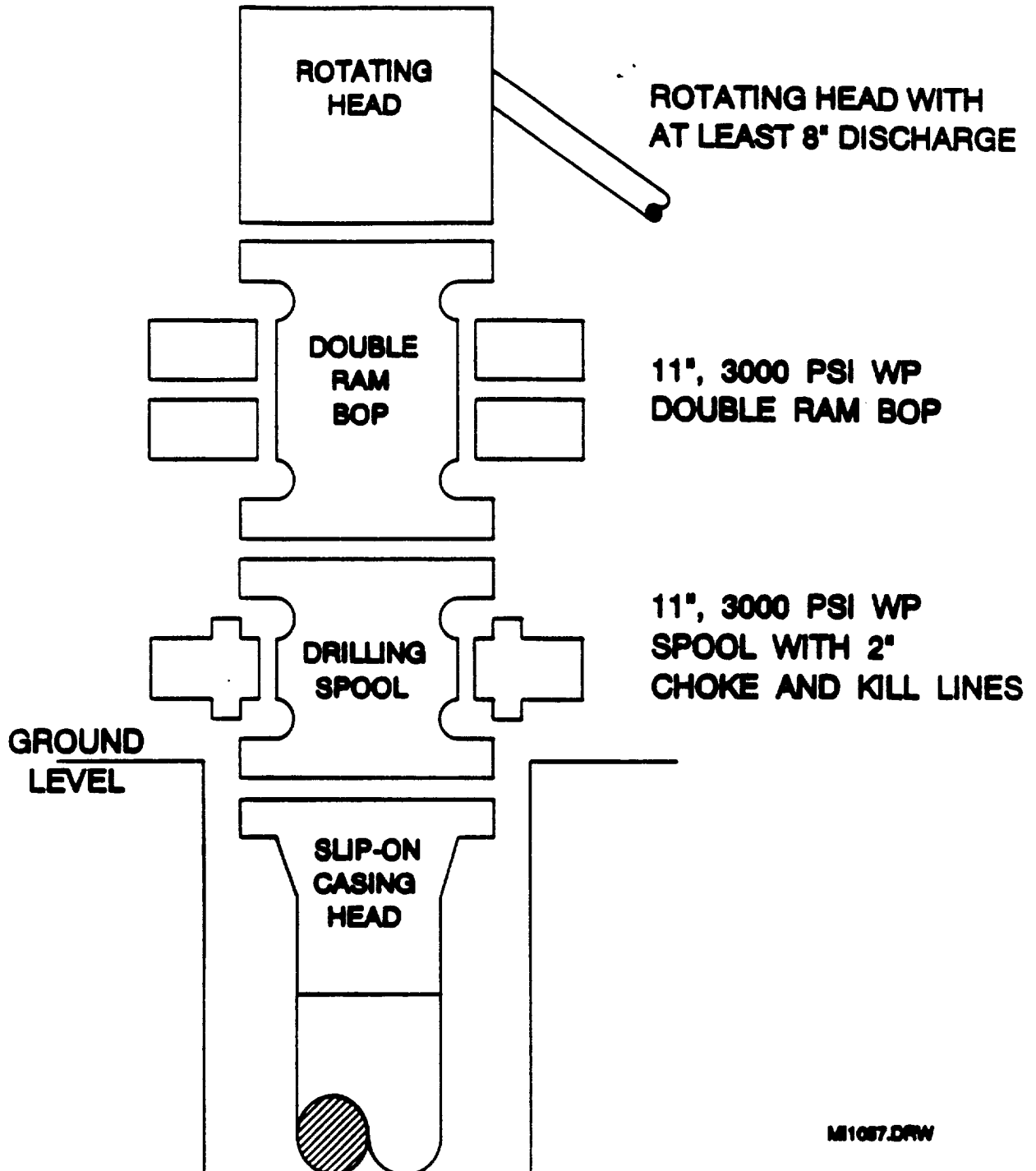
Lead 1070 sxs Class C Mixed at 14.2 ppg
Additives 8% A-10 0.25% FL-62 0.2% SMS
Tail 300 sxs Class C Mixed at 14.8 ppg
Additives 1% BA-10 0.2% SMS 1% A-7
Percent Free Water Water Loss cc

RECEIVED

MAY 17 1996

AS
OFFICE

BOP SPECIFICATIONS



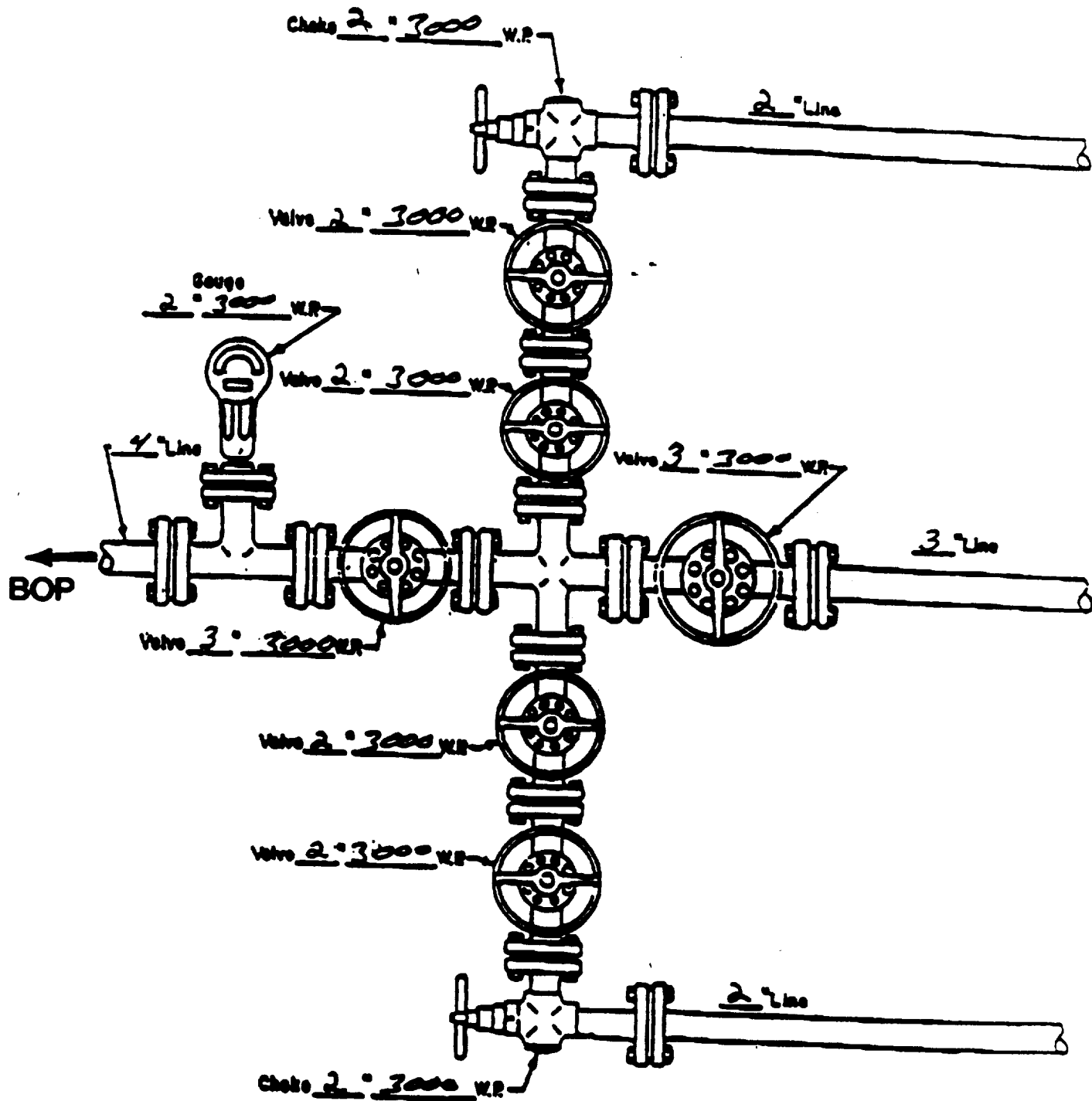
M1057.DRW

RECEIVED

MAY 17 1964

OFFICE

CHUKE MANIFOLD DIAGRAM



MANIFOLD
3000 #W.P.

- ☒ Manual
- ☐ Hydraulic

RECEIVED

MAY 17 1994

JOHN HODGINS
OFFICE

OCT 11 1995

