

Form 3160-3  
(July 1979)  
(formerly 9-331C)

N.M. OIL CONS. COMMISSION

P.O. BOX 188

HOBBS, NEW MEXICO 88401

DEPARTMENT OF THE INTERIOR

BUREAU OF LAND MANAGEMENT

CONTACT RECEIVING  
OFFICE FOR NUMBER  
OF COPIES JURED  
(Other instructions on  
reverse side)

BLM Roswell District  
Modified Form No.  
ND60-3160-2

# APPLICATION FOR PERMIT TO DRILL, DEEPEN, OR PLUG BACK

## 1A. TYPE OF WORK

DRILL ☒

DEEPEN ☐

PLUG BACK ☐

## B. TYPE OF WELL

OIL  
WELL ☒

GAS  
WELL ☐

OTHER

SINGLE  
ZONE ☐

MULTIPLE  
ZONE ☒

## 2. NAME OF OPERATOR

Conoco, Inc.

## 3a. Area Code & Phone No.

(915) 686-6548

## 3. ADDRESS OF OPERATOR

10 Desta Dr. Ste 100W, Midland, TX 79705

## 4. LOCATION OF WELL (Report location clearly and in accordance with any State requirements.)

At surface

660' FNL & 610' FWL

At proposed prod. zone

Blinebry-Tubb/Drinkard

## 14. DISTANCE IN MILES AND DIRECTION FROM NEAREST TOWN OR POST OFFICE

## 15. DISTANCE FROM PROPOSED

LOCATION TO NEAREST  
PROPERTY OR LEASE LINE, FT.  
(Also to nearest 40g. unit line, if any)

## 16. NO. OF ACRES IN LEASE

18. DISTANCE FROM PROPOSED LOCATION  
TO NEAREST WELL, DRILLING, COMPLETED,  
OR APPLIED FOR, ON THIS LEASE, FT.

## 21. ELEVATIONS (Show whether DP, RT, GR, etc.)

3543'

Lee County Controlled Water Basin

## 22. APPROX. DATE WORK WILL START

7/1/94

## PROPOSED CASING AND CEMENTING PROGRAM

HOLE SIZE	CASING SIZE	WEIGHT/FOOT	GRADE	THREAD TYPE	SETTING DEPTH	QUANTITY OF CEMENT
12-1/4"	9-5/8"	36#	K-55	ST&C	1500'	700 sx/circ.
8-3/4"	7"	23#	K-55	LT&C	6975'	1870 sx/circ.

It is proposed to drill this Blinebry-Tubb/Drinkard oil well according to the drilling plan submitted in the following attachments:

- Well Location and Acreage Dedication Plat (C-102)
- Attachment to FORM 3160-3
- Proposed Well Plan Outline
- Surface Use Plan
- EXHIBIT A: New Mexico road map
- EXHIBIT B.1: Lease road & well location maps
- EXHIBIT B.2: Well Location Map
- EXHIBITS B.3: 7.5" Quadrangle Topo Area Map
- EXHIBIT C.1-C.8: Road, flowline, & powerline
- EXHIBIT D: Rig Layout Plan
- BOP & Choke Manifold Specifications
- H2S Drilling Operations Plan

OPER. OGRID NO. 5273  
PROPERTY NO. 3127  
POOL CODE 62965  
EFF. DATE 5-20-94  
API NO. 302025-32520

Approval Subject to  
General Requirements and  
Special Stipulations  
Attached

IN ABOVE SPACE DESCRIBE PROPOSED PROGRAM: If proposal is to deepen or plug back, give data on present productive zone and proposed new productive zone. If proposal is to drill or deepen directionally, give pertinent data on subsurface locations and measured and true vertical depths. Give blowout preventer program, if any.

24.

SIGNED

TITLE Sr. Conservation Coordinator DATE 4/6/94

(This space for Federal or State office use)

PERMIT NO.

APPROVAL DATE

APPROVED BY JARIS SGO RICHARD L. MANUS  
CONDITIONS OF APPROVAL, IF ANY:

TITLE

AREA MANAGER

DATE

MAY 13 1994

APPROVAL OF THIS APPLICATION DOES NOT WARRANT  
OR CERTIFY THAT THE APPLICANT HOLDS LEGAL OR  
EQUITABLE TITLE TO THOSE RIGHTS IN THE SUBJECT  
LEASE WHICH WOULD ENTITLE THE APPLICANT TO  
Title 18 U.S.C. Section 1001, makes it a crime for any person knowingly and willfully to make to any department or agency of the  
CONDUCT OPERATIONS THEREON

RECEIVED

MAY 19 1994

OUTREACH  
OFFICE

District I  
PO Box 1966, Hobbs, NM 88241-1966  
District II  
PO Drawer DD, Artesia, NM 88211-0719  
District III  
1000 Rio Bravos Rd., Aztec, NM 87410  
District IV  
PO Box 2088, Santa Fe, NM 87504-2088

State of New Mexico  
Energy, Minerals & Natural Resources Department

OIL CONSERVATION DIVISION  
PO Box 2088  
Santa Fe, NM 87504-2088

Form C-10  
Revised February 10, 1994  
Instructions on back  
Submit to Appropriate District Office  
State Lease - 4 Copies  
Fee Lease - 3 Copies

☐ AMENDED REPORT

WELL LOCATION AND ACREAGE DEDICATION PLAT

<sup>1</sup> API Number	<sup>1</sup> Pool Code 62965	<sup>1</sup> Pool Name Warren Blinebry - Tubb
<sup>2</sup> Property Code	<sup>2</sup> Property Name Warren Unit Blinebrv-Tubb	<sup>3</sup> Well Number 116
<sup>1</sup> OGRID No.	<sup>1</sup> Operator Name CONOCO, INC.	<sup>3</sup> Elevation 3543

<sup>10</sup> Surface Location

UL or lot no.	Section	Township	Range	Lot Ida	Feet from the	North/South line	Feet from the	East/West line	County
D	28	20-S	38-E		660	NORTH	610	WEST	LEA

<sup>11</sup> Bottom Hole Location If Different From Surface

UL or lot no.	Section	Township	Range	Lot Ida	Feet from the	North/South line	Feet from the	East/West line	County

<sup>13</sup> Dedicated Acres 40	<sup>13</sup> Joint or Infill	<sup>14</sup> Consolidation Code	<sup>14</sup> Order No.
-------------------------------------	-------------------------------	----------------------------------	-------------------------

NO ALLOWABLE WILL BE ASSIGNED TO THIS COMPLETION UNTIL ALL INTERESTS HAVE BEEN CONSOLIDATED  
OR A NON-STANDARD UNIT HAS BEEN APPROVED BY THE DIVISION

16 660' 610'			

<sup>17</sup> OPERATOR CERTIFICATION

I hereby certify that the information contained herein is true and complete to the best of my knowledge and belief

*Jerry W. Hoover*  
Signature

Jerry W. Hoover  
Printed Name

Sr. Conservation Coordinator  
Title

4/5/94  
Date

<sup>18</sup> SURVEYOR CERTIFICATION

I hereby certify that the well location shown on this plat was plotted from field notes of actual surveys made by me or under my supervision, and that the same is true and correct to the best of my belief

3-11-94  
Date of Survey

Signature and Seal of Registered Surveyor

*Earl Foote*

8278

REGISTERED PROFESSIONAL LAND SURVEYOR

NEW MEXICO

8278

Certificate Number

8278

**RECEIVED**

**MAY 19 1994**

**USCIS  
OFFICE**

**ATTACHMENT TO FORM 3160-3**  
**APPLICATION FOR PERMIT TO DRILL**

**Conoco Inc.**

**Warren Unit No. 116**  
**Sec. 28, T-20S, R-38E**  
**Lea County, New Mexico**

1. The estimated tops of important geologic markers are shown on the attached Proposed Well Plan Outline.
2. The estimated depths at which anticipated water, oil, gas or other mineral-bearing formations to be encountered are shown on the attached Proposed Well Plan Outline.
3. A drawing of Blowout Preventer Specifications is attached. Pipe rams and blinds will be checked to the working pressure of the stack or 70% of the minimum internal yield strength of the casing whichever is less. BOP will be checked when casing string is set.
4. The proposed casing program is as follows:

0-1500':	9-5/8"	36#	K-55
0-6975':	7"	23	K-55
5. The proposed mud program is as follows:

0-1200':	8.4# Fresh
1500'-5600':	10.0# Saturated Brine
5600'-6975':	9.2# Brine w/starch
6. The logging suite will include the following open-hole logs:  
1) ~~GR-CAL-DLL-MSFL-CNL-LDT~~ from TD-2500' and 2) CBIL from TD-2500'. A temperature survey will be run to determine the top of cement on each casing string where cement is not circulated.
7. Special Drilling Problems:
  - a) Lost circulation 4000'-5000'.
  - b) Possible differential sticking 5000'-5500'.
8. The anticipated starting date is 7-1-94 with a duration of approximately 17 days.

**RECEIVED**

**MAY 19 1994**

**JOHN HODDS  
OFFICE**

# PROPOSED WELL PLAN OUTLINE

WELL NAME **WARREN UNIT NO. 116**

LOCATION **660' FNL 610' FWL SECT. 28 T-20S R-38E LEA CO.**

TVD IN 1000'	MD	FORMATION TOPS & TYPE	DRILLING PROBLEMS	TYPE OF FORMATION EVALUATION	HOLE SIZE	CASING SIZE DEPTH	FRAC GRAD	FORMATION PRESSURE GRADIENT	MUD WT TYPE	DAYS
0					12-1/4"				8.4 FRESH	
1										
2		RUSTLER 1430'				9-5/8" 1500'			10 BRINE	3
3		B/SALT 2525' YATES 2730' 7-RIVERS 2985'		2-MAN MUD LOGGERS ON AT 2500'						
4		GRAYBURG 3575' SAN ANDRES 4040'		H2S MONITOR ON AT 4000'						
5			POSSIBLE LOST CIRCULATION AND SEEPAGE		8-3/4"				BRINE STARCH	
6		GLORIETTA 5355' BLINEBRY 5805'	CASES OF DIFFERENTIAL STICKING THROUGH GLORIETTA TO TOTAL DEPTH							
7		TUBB 6315' DRINKARD 6605' TD @ 6975'		GR-CAL-DDL-MSFL 2500' - TD GR-CAL-FDC-CNL-PE 2500' - TD		7" TD				17
8										
9										
10										
11										
12										
13										
14										
15										
16										

DATE \_\_\_\_\_

APPROVED **D.W. EUBANK**

DRILLING ENGINEER

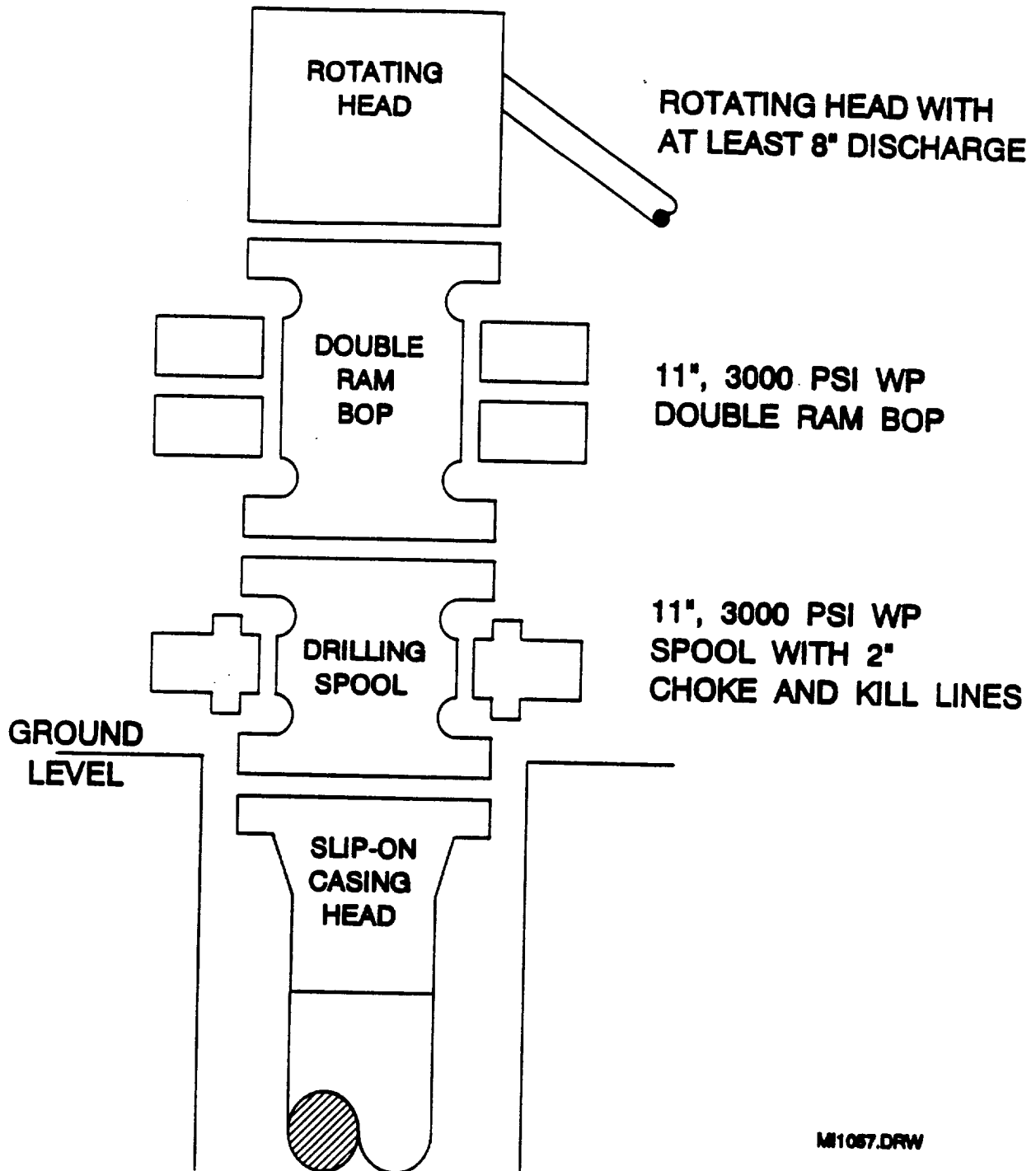
**RECEIVED**

**MAY 15 1993**

**OUR OFFICE**



# BOP SPECIFICATIONS



MR1057.DRW

**RECEIVED**

**MAY 19 1994**

**OLD NODDS  
OFFICE**

50/6/9

10/1/94