

Form 3160-3
(July 1989)
(formerly 9-331c)

N.M. OIL CON COMMISSION
P.O. BOX 1980 UNITED STATES
HOBBS, NEW MEXICO 88401
BUREAU OF LAND MANAGEMENT

ORIGINAL RECEIVING
OFFICE FOR NUMBER
OF COPY REQUIRED
(Other instructions on
reverse side)

NM Roswell District
Modified Form No.
NMD60-3160-2

APPLICATION FOR PERMIT TO DRILL, DEEPEN, OR PLUG BACK

1a. TYPE OF WORK

DRILL ☒

DEEPEN ☐

PLUG BACK ☐

b. TYPE OF WELL

OIL
WELL ☒

GAS
WELL ☐

OTHER ☐

SINGLE
ZONE ☐

MULTIPLE
ZONE ☒

2. NAME OF OPERATOR

Conoco, Inc.

3a. Area Code & Phone No.

(915) 686-6548

3. ADDRESS OF OPERATOR

10 Desta Dr. Ste 100W, Midland, TX 79705

4. LOCATION OF WELL (Report location clearly and in accordance with any State requirements.)*

At surface

2155' FSL & 660' FWL

At proposed prod. zone

Blinbry-Tubb/Drinkard

14. DISTANCE IN MILES AND DIRECTION FROM NEAREST TOWN OR POST OFFICE*

**10. DISTANCE FROM PROPOSED*
LOCATION TO NEAREST
PROPERTY OR LEASE LINE, FT.
(Also to nearest drig. unit line, if any)**

**13. DISTANCE FROM PROPOSED LOCATION*
TO NEAREST WELL, DRILLING, COMPLETED,
OR APPLIED FOR, ON THIS LEASE, FT.**

16. NO. OF ACRES IN LEASE

19. PROPOSED DEPTH

6975'

**17. NO. OF ACRES ASSIGNED
TO THIS WELL**

40

20. ROTARY OR CABLE TOOLS

Rotary

21. ELEVATIONS (Show whether DP, RT, GR, etc.)

3526'

Lea County Controlled Water Basin

22. APPROX. DATE WORK WILL START*

7/1/94

23.

PROPOSED CASING AND CEMENTING PROGRAM

HOLE SIZE	CASING SIZE	WEIGHT/FOOT	GRADE	THREAD TYPE	SETTING DEPTH	QUANTITY OF CEMENT
12-1/4"	9-5/8"	36H	K-55	ST&C	1500'	700 sx/circ.
8-3/4"	7"	23H	K-55	IT&C	6975'	1870 sx/circ.

It is proposed to drill this Blinbry-Tubb/Drinkard oil well according to the plan submitted in the following attachments:

1. Well Location and Acreage Dedication Plat (C-102)
2. Attachment to FORM 3160-3
3. Proposed Well Plan Outline
4. Surface Use Plan
5. EXHIBIT A: New Mexico road map
6. EXHIBIT B.1: Lease road & well location maps
7. EXHIBIT B.2: Well Location Map
8. EXHIBITS B.3: 7.5" Quadrangle Topo Area Map
9. EXHIBIT C.1-C.8: Road, flowline, & powerline
10. EXHIBIT D: Rig Layout Plan
11. BOP & Choke Manifold Specifications
12. H2S Drilling Operations Plan
13. Letter verifying negotiations with fee surface owner

OPER. OR HIB NO. 3023
PROPERTY NO. 3122
POOL CODE 63080
EFF. DATE 5-20-94
API NO. 30-025-32521

Approval Subject to
General Requirements and
Special Stipulations
Attached

IN ABOVE SPACE DESCRIBE PROPOSED PROGRAM: If proposal is to deepen or plug back, give data on present productive zone and proposed new productive zone. If proposal is to drill or deepen directionally, give pertinent data on subsurface locations and measured and true vertical depths. Give blowout preventer program, if any.

24.

SIGNED

TITLE Sr. Conservation Coordinator DATE 4/6/94

(This space for Federal or State office use)

PERMIT NO.

APPROVAL DATE

(ORIG. SGD.) RICHARD L. MANUS

AREA MANAGER

APPROVED BY

TITLE

DATE

MAY 13 1994

CONDITIONS OF APPROVAL, IF ANY:

APPROVAL OF THIS APPLICATION DOES NOT WARRANT OR CERTIFY THAT THE APPLICANT HOLDS LEGAL OR EQUITABLE TITLE TO THOSE RIGHTS IN THE SUBJECT LEASE WHICH WOULD ENTITLE THE APPLICANT TO

See Instructions On Reverse Side

CRIMINAL OFFENSES: It is a crime for any person knowingly and willfully to make to any department or agency of the

RECEIVED

MAY 10 1994

FOODS
OFFICE

District I
PO Box 1966, Hobbs, NM 88241-1966
District II
PO Drawer DD, Artesia, NM 88211-0719
District III
1000 Rio Grande Rd., Aztec, NM 87410
District IV
PO Box 2088, Santa Fe, NM 87504-2088

State of New Mexico
Energy, Minerals & Natural Resources Dep.

OIL CONSERVATION DIVISION
PO Box 2088
Santa Fe, NM 87504-2088

Form C-1
Revised February 10, 1994
Instructions on back
Submit to Appropriate District Office
State Lease - 4 Copies
Fee Lease - 3 Copies

☐ AMENDED REPORT

WELL LOCATION AND ACREAGE DEDICATION PLAT

API Number		Pool Code 62965	Pool Name Warren Blinebry - Tubb
Property Code	Property Name Warren Unit Blinebry-Tubb		Well Number 117
OGRID No.	Operator Name CONOCO, INC.		Elevation 3526

10 Surface Location

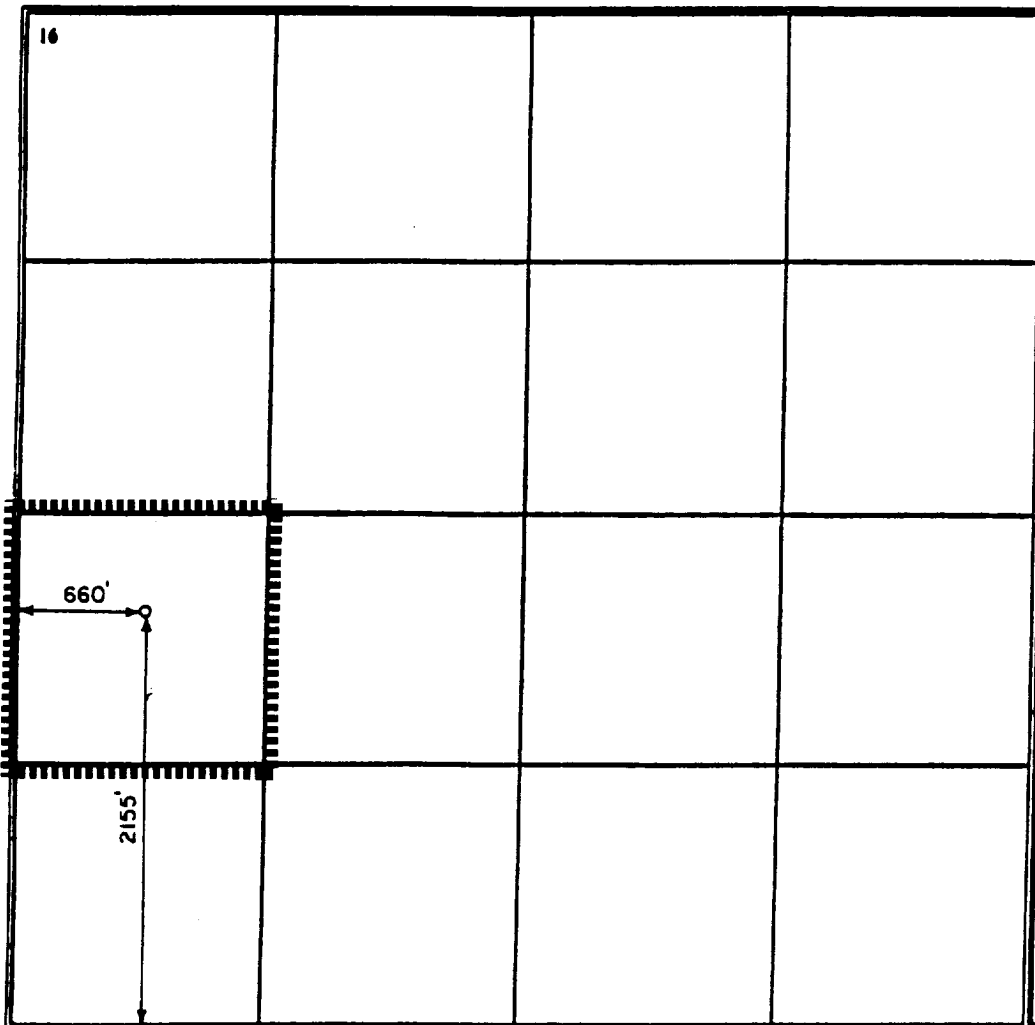
UL or lot no. L	Section 28	Township 20-S	Range 38-E	Lot Idn	Feet from the 2155	North/South line SOUTH	Feet from the 660	East/West line WEST	County LEA
--------------------	---------------	------------------	---------------	---------	-----------------------	---------------------------	----------------------	------------------------	---------------

11 Bottom Hole Location If Different From Surface

UL or lot no.	Section	Township	Range	Lot Idn	Feet from the	North/South line	Feet from the	East/West line	County
---------------	---------	----------	-------	---------	---------------	------------------	---------------	----------------	--------

Dedicated Acres 40	Joint or Infill	Consolidation Code	Order No.
-----------------------	-----------------	--------------------	-----------

NO ALLOWABLE WILL BE ASSIGNED TO THIS COMPLETION UNTIL ALL INTERESTS HAVE BEEN CONSOLIDATED
OR A NON-STANDARD UNIT HAS BEEN APPROVED BY THE DIVISION



17 OPERATOR CERTIFICATION

I hereby certify that the information contained herein is true and complete to the best of my knowledge and belief.

Jerry W. Hoover
Signature

Jerry W. Hoover
Printed Name

Sr. Conservation Coordinator
Title

4/15/94
Date

18 SURVEYOR CERTIFICATION

I hereby certify that the well location shown on this plat was plotted from field notes of actual surveys made by me or under my supervision, and that the same is true and correct to the best of my belief.

3-11-94
Date of Survey

Signature and Seal of Professional Surveyor

Earl Foote
Certificate Number 8278



★ CHIEF

MAY 1 1964

RECEIVED
OFFICE

ATTACHMENT TO FORM 3160-3
APPLICATION FOR PERMIT TO DRILL

Conoco Inc.

Warren Unit No. 117
Sec. 28, T-20S, R-38E
Lea County, New Mexico

1. The estimated tops of important geologic markers are shown on the attached Proposed Well Plan Outline.
2. The estimated depths at which anticipated water, oil, gas or other mineral-bearing formations to be encountered are shown on the attached Proposed Well Plan Outline.
3. A drawing of Blowout Preventer Specifications is attached. Pipe rams and blinds will be checked to the working pressure of the stack or 70% of the minimum internal yield strength of the casing whichever is less. BOP will be checked when casing string is set.
4. The proposed casing program is as follows:

0-1500':	9-5/8"	36#	K-55
0-6975':	7"	23	K-55
5. The proposed mud program is as follows:

0-1200':	8.4# Fresh
1500'-5600':	10.0# Saturated Brine
5600'-6975':	9.2# Brine w/starch
6. The logging suite will include the following open-hole logs:
1) ~~GR-CAL-DLL-MSFL-CNL-LDT~~ from TD-2500' and 2) CBIL from TD-2500'. A temperature survey will be run to determine the top of cement on each casing string where cement is not circulated.
7. Special Drilling Problems:
 - a) Lost circulation 4000'-5000'.
 - b) Possible differential sticking 5000'-5500'.
8. The anticipated starting date is 7-1-94 with a duration of approximately 17 days.

RECEIVED

MAY 1961

SPONSORS
OFFICE

PROPOSED WELL PLAN OUTLINE

WELL NAME **WARREN UNIT NO. 117**

LOCATION **2155' FSL 660' FWL SECT. 28 T-20S R-38E LEA CO.**

TVD IN 1000'	MD	FORMATION TOPS & TYPE	DRILLING PROBLEMS	TYPE OF FORMATION EVALUATION	HOLE SIZE	CASING SIZE DEPTH	FRAC GRAD	FORMATION PRESSURE GRADIENT	WT TYPE	DAYS
0			POSSIBLE HOLE ENLARGEMENT AND SLOUGHING		12-1/4"				8.4 FRESH	
1		RUSTLER 1430'				9-5/8" 1500'			10 BRINE	3
2		B/SALT 2525' YATES 2730' 7-RIVERS 2985'		2-MAN MUD LOGGERS ON AT 2500'						
3										
4		GRAYBURG 3575' SAN ANDRES 4040'		H2S MONITOR ON AT 4000'						
5			POSSIBLE LOST CIRCULATION AND SEEPAGE		8-3/4"				BRINE STARCH	
6		GLORIETTA 5355' BLINEBRY 5805'	CASES OF DIFFERENTIAL STICKING THROUGH GLORIETTA TO TOTAL DEPTH							
7		TUBB 6315' DRINKARD 6605' TD @ 6975'		GR-CAL-DDL-MSFL 2500' - TD GR-CAL-FDC-CNL-PE 2500' - TD		7" TD				17
8										
9										
10										
11										
12										
13										
14										
15										
16										

DATE _____

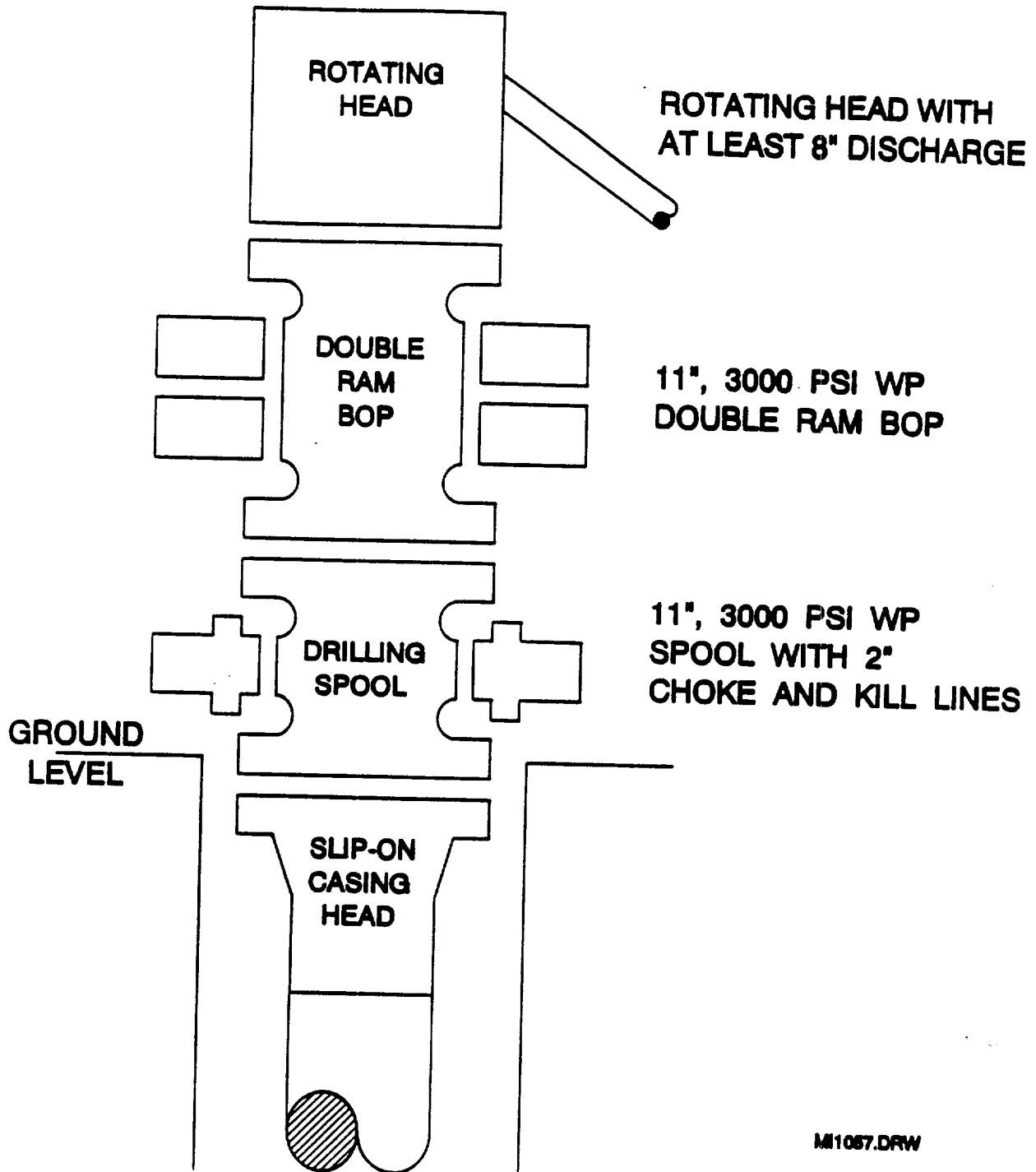
APPROVED **D.W. EUBANK**
DRILLING ENGINEER

RECEIVED

MAY 19 1964

FOR RECORDS
OFFICE

BOP SPECIFICATIONS



M11067.DRW

RECEIVED

MAY 19 1994

JOHN ROBERTS
OFFICE

50 98 2