

District I  
PO Box 1980, Hobbs, NM 88241-1980  
District II  
PO Drawer DD, Artesia, NM 88211-0719  
District III  
1000 Rio Brazos Rd., Aztec, NM 87410  
District IV  
PO Box 2088, Santa Fe, NM 87504-2088

State of New Mexico  
Energy, Minerals & Natural Resources Department

OIL CONSERVATION DIVISION  
PO Box 2088  
Santa Fe, NM 87504-2088

Form C-101  
Revised February 21, 1994  
Instructions on back  
Submit to Appropriate District Office  
State Lease - 6 Copies  
Fee Lease - 5 Copies

☒ AMENDED REPORT

APPLICATION FOR PERMIT TO DRILL, RE-ENTER, DEEPEN, PLUGBACK, OR ADD A ZONE

Operator Name and Address. CONOCO INC. 10 DESTA DRIVE STE 100W MIDLAND, TEXAS 79705		OGRID Number 005073
		API Number 30 - 0 25-32530
Property Code 13396	Property Name Hardy 36 State	Well No. 7

Surface Location

UL or lot no.	Section	Township	Range	Lot Idn	Feet from the	North/South line	Feet from the	East/West line	County
0 E	36	20S	37E		2200'	North	990	West	Lea

Proposed Bottom Hole Location If Different From Surface

UL or lot no.	Section	Township	Range	Lot Idn	Feet from the	North/South line	Feet from the	East/West line	County
Proposed Pool 1 Wildcat Ellenburger-Granite Wash					Proposed Pool 2				

Work Type Code N	Well Type Code O	Cable/Rotary R	Lease Type Code S	Ground Level Elevation 3496'
Multiple No	Proposed Depth 10,550'	Formation Granite Wash	Contractor	Spud Date 9/15/94

Proposed Casing and Cement Program

Hole Size	Casing Size	Casing weight/foot	Setting Depth	Sacks of Cement	Estimated TOC
17-1/2"	13-3/8"	54.5#	500'	525	Surface
12-1/4"	9-5/8"	36#	3850'	1400	Surface
8-3/4"	7"	26#	10,550'	1870	Surface

Describe the proposed program. If this application is to DEEPEN or PLUG BACK give the data on the present productive zone and proposed new productive zone. Describe the blowout prevention program, if any. Use additional sheets if necessary.

It is proposed to drill this well vertically through the Granite Wash formation according to the plan outlined in the following attachments:

1. Well Location & Acreage Dedication Plat (C-102)
2. Proposed Well Plan Outline
3. Cementing Program
4. BOP & Choke Manifold Specifications

I hereby certify that the information given above is true and complete to the best of my knowledge and belief.

Signature:

Printed name: Jerry W. Hoover

Title: Sr. Conservation Coordinator

Date: 8/26/94

Phone: (915) 686-6548

OIL CONSERVATION DIVISION

Approved by:

Title:

Approval Date: SEP 08 1994

Expiration Date:

Conditions of Approval:

Attached ☐



District I  
PO Box 1968, Hobbs, NM 88241-1968  
District II  
PO Drawer DD, Artesia, NM 88211-0719  
District III  
1000 Rio Brazos Rd., Aztec, NM 87410  
District IV  
PO Box 2088, Santa Fe, NM 87504-2088

State of New Mexico  
Energy, Minerals & Natural Resources Department

OIL CONSERVATION DIVISION  
PO Box 2088  
Santa Fe, NM 87504-2088

Form C-102

Revised February 10, 1994

Instructions on back

Submit to Appropriate District Office

State Lease - 4 Copies

Fee Lease - 3 Copies

☐ AMENDED REPORT

WELL LOCATION AND ACREAGE DEDICATION PLAT

API Number		Pool Code -29760 76238	Pool Name Wildcat Ellenburger-Granite Wash
Property Code 13396	Property Name HARDY 36 STATE		Well Number 7
OGRID No. 005073	Operator Name Conoco, Inc.		Elevation 3496'

10 Surface Location

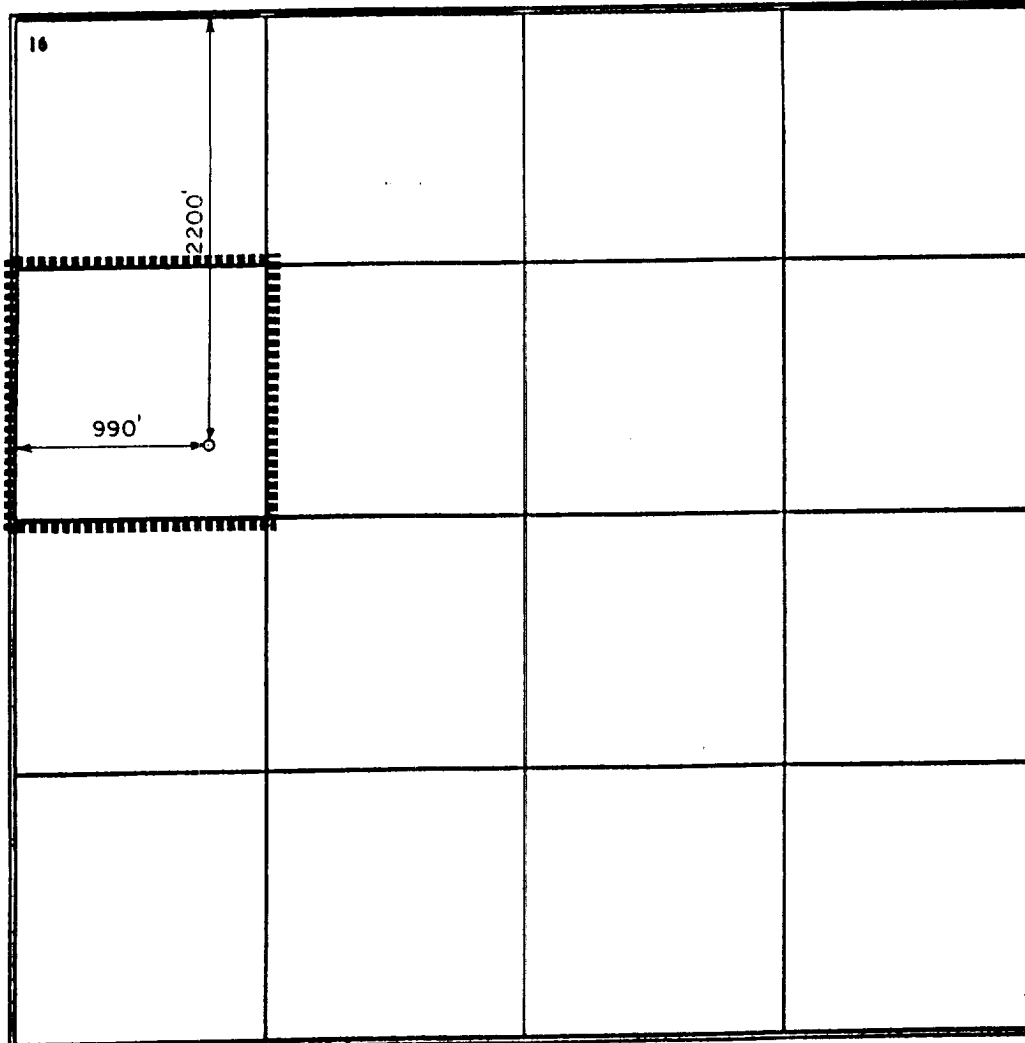
UL or lot no.	Section	Township	Range	Lot Ida	Feet from the	North/South line	Feet from the	East/West line	County
E	36	20-S	37-E		2200	North	990	West	Lea

11 Bottom Hole Location If Different From Surface

UL or lot no.	Section	Township	Range	Lot Ida	Feet from the	North/South line	Feet from the	East/West line	County

Dedicated Acres 40	Joint or Infill	Consolidation Code	Order No.
-----------------------	-----------------	--------------------	-----------

NO ALLOWABLE WILL BE ASSIGNED TO THIS COMPLETION UNTIL ALL INTERESTS HAVE BEEN CONSOLIDATED  
OR A NON-STANDARD UNIT HAS BEEN APPROVED BY THE DIVISION



17 OPERATOR CERTIFICATION

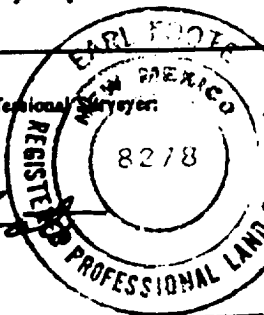
I hereby certify that the information contained herein is true and complete to the best of my knowledge and belief

Signature  
Jerry W. Hoover  
Printed Name  
Sr. Conservation Coordinator  
Title  
5/27/94  
Date

18 SURVEYOR CERTIFICATION

I hereby certify that the well location shown on this plat was plotted from field notes of actual surveys made by me or under my supervision, and that the same is true and correct to the best of my belief.

May 19, 1994  
Date of Survey  
Signature and Seal of Professional Surveyor:  
Earl F. Foltz  
Certificate Number 8278





# PROPOSED WELL PLAN OUTLINE

WELL NAME **HARDY STATE 36 NO. 7**  
 LOCATION **SEC 36, T20S, R37E, LEA Co., NEW MEXICO**

Est. GL = 3490'  
 Est. KB = 3506'

TVD IN 1000'	MD	FORMATION TOPS & TYPE	DRILLING PROBLEMS	TYPE OF FORMATION EVALUATION	HOLE SIZE	CASING SIZE DEPTH	FRAC GRAD	FORMATION PRESSURE GRADIENT	MUD WT TYPE	DAYS
0					17-1/2	13-3/8" J4.5 K-55 ST&C @ 500'			SPUD	
1		RUSTLER 1295' TOP SALT 1390'	WASHOUTS IN SALT SECTION						10 PPG BRINE	
2		BOTTOM SALT 2510' YATES 2610'	LOST CIRCULATION TO 5000' SEEPAGE TO SEVERE		12-1/4			<8.3		
3		SEVEN RIVERS 2882'	ACTIVE WATERFLOOD ZONE							
4		QUEEN 3520' GRAYBURG 3785' SAN ANDRES 4009'	POSSIBLE DEVIATION TO TD	TWO MAN MUDLOG @ 3500'		9-5/8" J36# K-55 LT&C @ 3850' DRIFT @ 8-3/4"				
5		GLORIETA 5217'	PARTIAL LOSSES POSSIBLE						FRESH WATER	
6		BLINEBRY MKR 5703'						<8.4		
7		TUBB MARKER 6310' DRINKARD 6602' ABO 6886'	HARDY ST. 36-1 HAD LOSSES @ 6357' OF 170 BPH - MUDDER UP						MUD UP @ 6300' FW GEL 8.5-8.7 WL 35cc	
8		STRAWN 7510'			8-3/4					
9		DEVONIAN 7986'	POSSIBLE SEVERE LOSSES FROM DEVONIAN TO TD							
10		SIMPSON 9640' McKEE SAND 9940' ELLENBURG LIME 10180' GRANITE WASH 10456'	WASHOUTS IN McKEE SAND HARDY ST. 36-1 HAD LOSSES OF 10 BPH @ 10300' - USED 8.8 MW & CaCO3 TO STOP LOSSES			7" 26# J K-55 & L-80 @ 10,550'		8.7-8.8	REDUCE WL @ 9400' TO 15cc MW @ 8.7-9.0	
11		TD @ 10550'		GR-CAL-LDT-CNL GR-DLL-MSFL GR-SON(LS)-DIEL 2000' OF NMR LOG ROTARY SW CORES						
12										
13										
14										
15										
16										

DATE 8/2/94

PREPARED BY: BILLY GOODWIN  
 DRILLING ENGINEER

DAMIAN BARRETT  
 RESERVOIR ENGINEER



WELL NAME: Hardy 36 State No. 7

**C E M E N T I N G      P R O G R A M**

**SURFACE CASING STRING**

<u>525</u>	sxs	Class <u>C</u>	Mixed at <u>14.8</u> ppg
Additives	<u>2 % A-7P</u>		
<u>      </u>	sxs	Class <u>      </u>	Mixed at <u>      </u> ppg
Additives	<u>      </u>		

**1st INTERMEDIATE CASING STRING**

LEAD	<u>1150</u>	sxs	Class <u>C</u>	Mixed at <u>12.7</u> ppg
Additives	<u>35:65:6 + 10 pps A-5 + .25 pps Cello</u>			
TAIL	<u>250</u>	sxs	Class <u>C</u>	Mixed at <u>14.8</u> ppg
Additives	<u>2 % A-7P</u>			

**PRODUCTION CASING STRING**

S  
T  
A  
G  
E  
  
1

LEAD	<u>530</u>	sxs	Class <u>H</u>	Mixed at <u>12.5</u> ppg
Additives	<u>2 % SMS + 3 % A-9</u>			
TAIL	<u>230</u>	sxs	Class <u>H</u>	Mixed at <u>16.2</u> ppg
Additives	<u>1.1% FL-62+.3% A-9+.3% CD-32+.2% SMS+3% R-3</u>			

S  
T  
A  
G  
E  
  
2

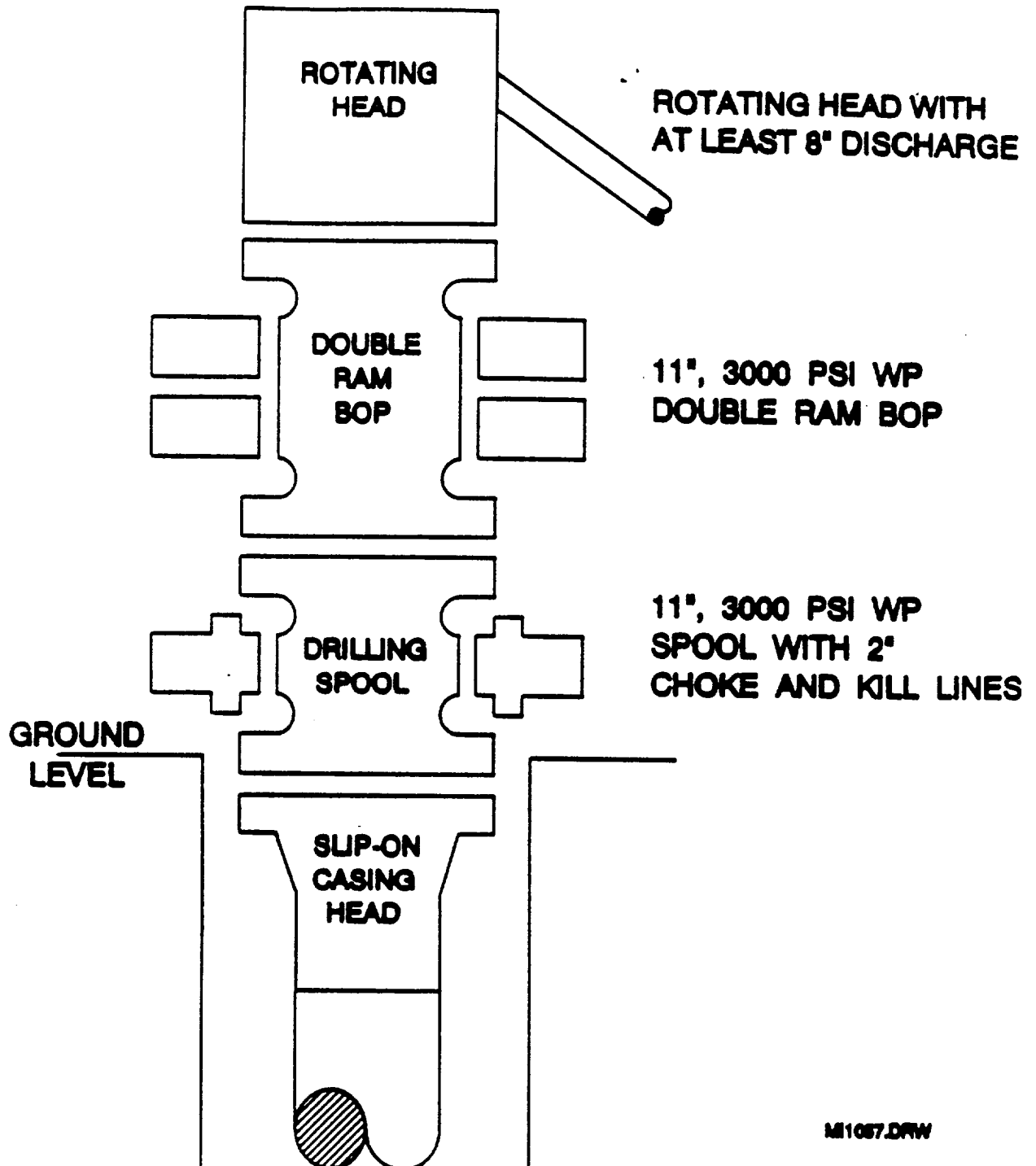
LEAD	<u>500</u>	sxs	Class <u>C</u>	Mixed at <u>14.8</u> ppg
Additives	<u>1.1% FL-62+.3% CD-32+.2% SMS+3% A-9</u>			
TAIL	<u>      </u>	sxs	Class <u>      </u>	Mixed at <u>      </u> ppg
Additives	<u>      </u>			

S  
T  
A  
G  
E  
  
3

LEAD	<u>280</u>	sxs	Class <u>C</u>	Mixed at <u>12.4</u> ppg
Additives	<u>2% SMS</u>			
TAIL	<u>330</u>	sxs	Class <u>C</u>	Mixed at <u>14.8</u> ppg
Additives	<u>1.1% FL-62+.3% CD-32+.2% SMS+3% A-9</u>			



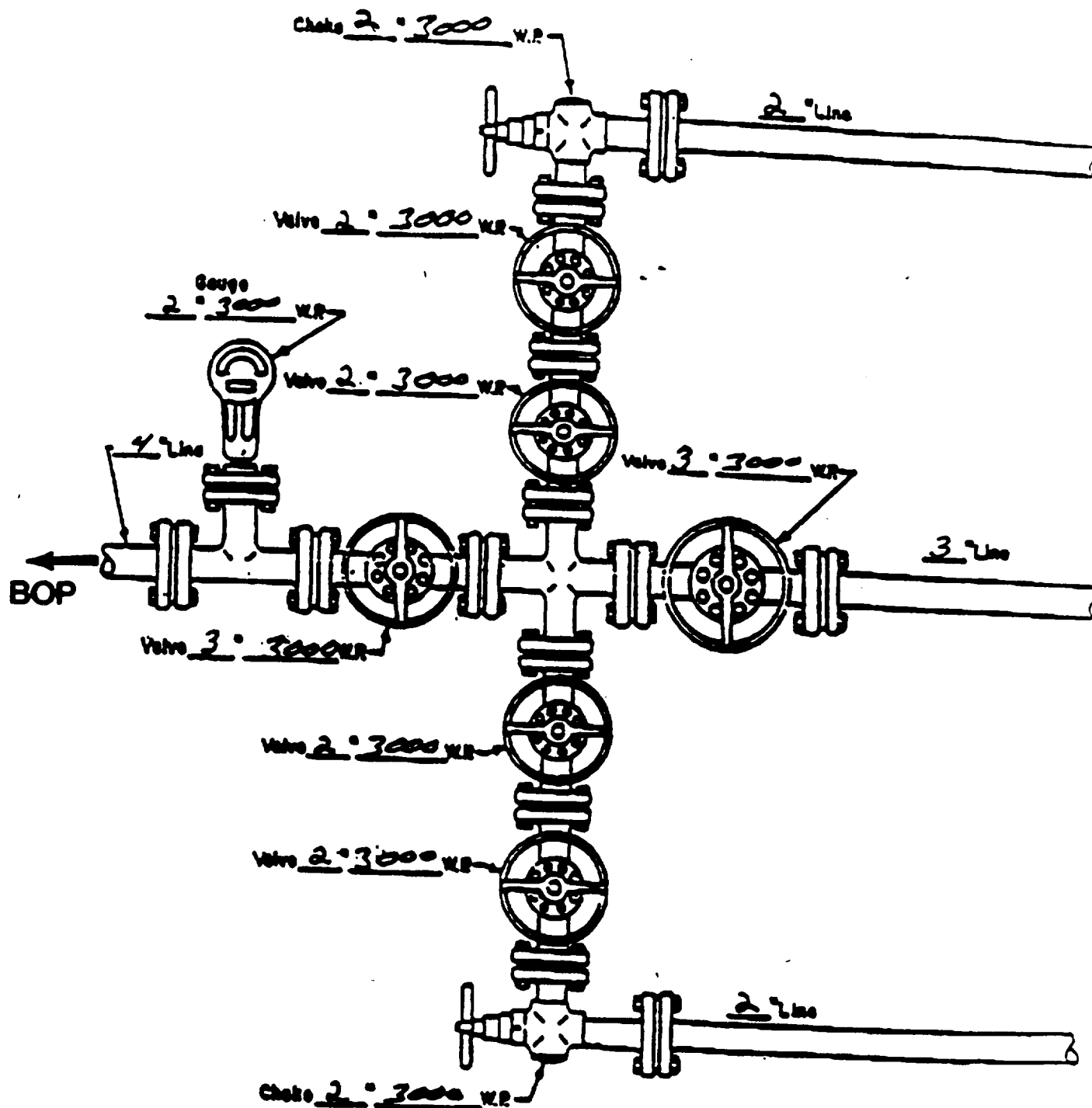
# BOP SPECIFICATIONS



M1057.DRW



# CHUKE MANIFOLD DIAGRAM



MANIFOLD  
3000 W.P.

- ☒ Manual
- ☐ Hydraulic