

## DISTRICT I

P.O. Box 1980, Hobbs, NM 88241-1980

## DISTRICT II

P.O. Box Drawer DD, Artesia, NM 88211-0719

## DISTRICT III

1000 Rio Brazos Rd., Aztec, NM 87410

## DISTRICT IV

P.O. Box 2088, Santa Fe, NM 87504-2088

## State of New Mexico

Energy, Minerals and Natural Resources Department

## OIL CONSERVATION DIVISION

P.O. Box 2088

Santa Fe, New Mexico 87504-2088

Form C-101

Revised February 10, 1994

Instructions on back

Submit to Appropriate District Office

State Lease - 6 Copies

Fee Lease - 5 Copies

☐ AMENDED REPORT

## APPLICATION FOR PERMIT TO DRILL, RE-ENTER, DEEPEN, PLUGBACK, OR ADD A ZONE

<sup>1</sup> Operator Name and Address TEXACO EXPLORATION & PRODUCTION INC. P.O. Box 3109, Midland Texas 79702		<sup>2</sup> OGRID Number 022351
		<sup>3</sup> API Number 30-025-32561
<sup>4</sup> Property Code 11042	<sup>5</sup> Property Name NEW MEXICO 'H' STATE NCT-3	<sup>6</sup> Well No. 35

<sup>7</sup> Surface Location

UI or lot no.	Section	Township	Range	Lot.Idn	Feet From The	North/South Line	Feet From The	East/West Line	County
E	19	20-S	37-E		1880	NORTH	710	WEST	LEA

<sup>8</sup> Proposed Bottom Hole Location If Different From Surface

UI or lot no.	Section	Township	Range	Lot.Idn	Feet From The	North/South Line	Feet From The	East/West Line	County
<sup>9</sup> Proposed Pool 1 EUMONT YATES SEVEN RIVERS QUEEN (PRO GAS)					<sup>10</sup> Proposed Pool 2				

<sup>11</sup> Work Type Code N	<sup>12</sup> WellType Code G	<sup>13</sup> Rotary or C.T. R	<sup>14</sup> Lease Type Code S (B-160)	<sup>15</sup> Ground Level Elevation 3524'
<sup>16</sup> Multiple No	<sup>17</sup> Proposed Depth 3565'	<sup>18</sup> Formation PENROSE	<sup>19</sup> Contractor	<sup>20</sup> Spud Date 7/8/94

<sup>21</sup> Proposed Casing and Cement Program

SIZE OF HOLE	SIZE OF CASING	WEIGHT PER FOOT	SETTING DEPTH	SACKS OF CEMENT	EST. TOP
11	8 5/8	24#	425'	200	SURFACE
7 7/8	5 1/2	15.5#	3565'	1015	SURFACE

<sup>22</sup> Describe the proposed program. If this application is to DEEPEN or PLUG BACK give the data on the present productive zone and proposed new productive zone.  
Describe the blowout prevention program, if any. Use additional sheets if necessary.

## CEMENTING PROGRAM:

SURFACE CASING - 200 SACKS CLASS C w/ 2% CACL2 (14.8 PPG, 1.34 CF/S, 6.31 GW/S).

PRODUCTION CASING - 415 SACKS 35/65 POZ CLASS H w/ 6% GEL, 5% SALT, 1/4# FLOCELE (12.8 PPG, 1.94 CF/S, 10.4 GW/S). F/B 600 SACKS CLASS H (15.6 PPG, 1.19 CF/S, 5.2 GW/S).

NON STANDARD GAS PRORATION UNIT - ORDER NO. R-520.

GREENHILL PETROLEUM OPERATES A WELL IN THIS QUARTER QUARTER SECTION AND HAS BEEN FURNISHED A COPY OF THIS APPLICATION.

<sup>23</sup> I hereby certify that the rules and regulations of the Oil Conservation Division have been complied with and that the information given above is true and complete to the best of my knowledge and belief.

Signature C.P. Basham /cwn

Printed Name C. P. Basham

Title Drilling Operations Mgr.

Date 6/27/94

Telephone 688-4606

## OIL CONSERVATION DIVISION

Approved By:

Orig. Signed by  
Paul Kautz  
Geologist

Title:

Approval Date:

JUN 30 1994

Expiration Date:

Conditions of Approval:

Attached ☐

Submit to Appropriate  
District Office  
State Lease - 4 copies  
Fee Lease - 3 copies

State of New Mexico  
Energy, Minerals and Natural Resources Department

Form C-102  
Revised 1-1-89

OIL CONSERVATION DIVISION

P.O. Box 2088  
Santa Fe, New Mexico 87504-2088

DISTRICT I  
P.O. Box 1980, Hobbs, NM 88240

DISTRICT II  
P.O. Drawer DD, Artesia, NM 88210

DISTRICT III  
1000 Rio Brazos Rd., Aztec, NM 87410

WELL LOCATION AND ACREAGE DEDICATION PLAT

All Distances must be from the outer boundaries of the section

Operator <b>TEXACO PRODUCING INC</b>			Lease <b>NEW MEXICO "H" STATE NCT 3</b>		Well No. <b>35</b>
Unit Letter <b>E</b>	Section <b>19</b>	Township <b>20 SOUTH</b>	Range <b>37 EAST</b>	County <b>LEA</b>	
Actual Footage Location of Well: <b>1880</b> feet from the <b>NORTH</b> line and <b>710</b> feet from the <b>WEST</b> line					
Ground level Elev. <b>3524'</b>	Producing Formation <b>PENROSE</b>		Pool <b>EUMONT YATES SEVEN RIVERS QUEEN</b>		Dedicated Acreage: <b>3.20</b> Acres

1. Outline the acreage dedicated to the subject well by colored pencil or hatchure marks on the plat below.

2. If more than one lease is dedicated to the well, outline each and identify the ownership thereof (both as to working interest and royalty).

3. If more than one lease of different ownership is dedicated to the well, have the interest of all owners been consolidated by communitization, unitization, force-pooling, etc.?

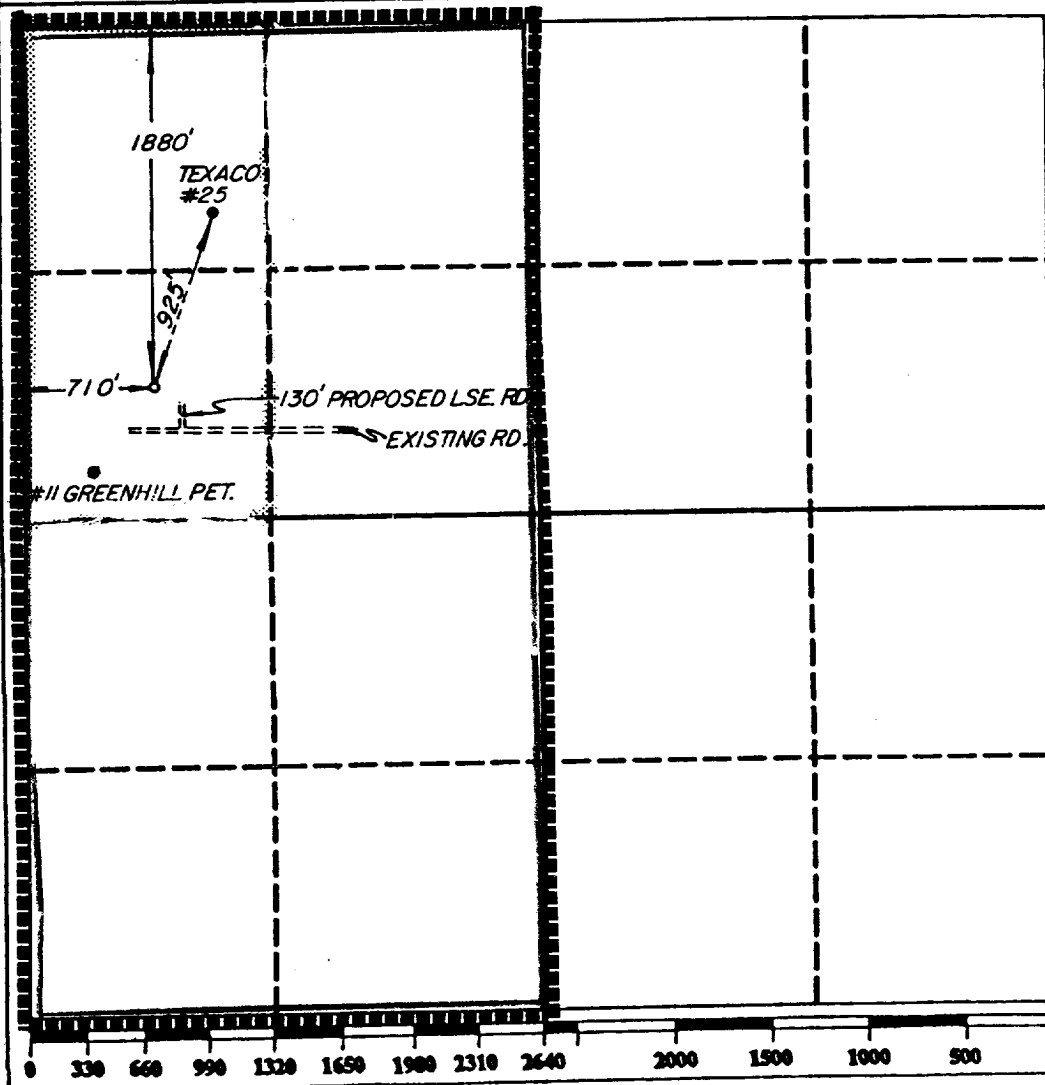
☐ Yes

☐ No

If answer is "yes" type of consolidation

If answer is "no" list the owners and tract descriptions which have actually been consolidated. (Use reverse side of this form if necessary.)

No allowable will be assigned to the well until all interests have been consolidated (by communitization, unitization, forced-pooling, or otherwise) or until a non-standard unit, eliminating such interest, has been approved by the Division.



OPERATOR CERTIFICATION

I hereby certify that the information contained herein is true and complete to the best of my knowledge and belief.

Signature

*R. D. Mariott*

Printed Name

R. D. MARIOTT

Position

DIVISION SURVEYOR

Company

TEXACO PRODUCING INC.

Date

JUNE 7, 1994

SURVEYOR CERTIFICATION

I hereby certify that the well location shown on this plat was plotted from field notes of actual surveys made by me or under my supervision, and that the same is true and correct to the best of my knowledge and belief.

JUNE 7, 1994

Date Surveyed

Signature & Seal of  
Professional Surveyor

*Richard J. Pickett*

Certificate No.

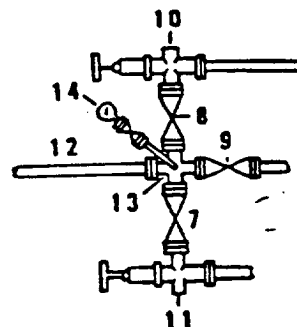
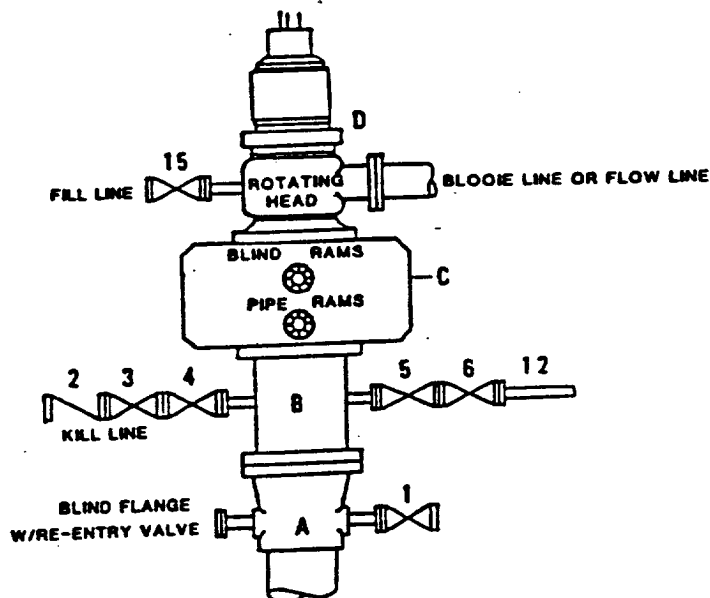
4882

RECEIVED

UNIVERSITY OF  
TORONTO

**DRILLING CONTROL  
CONDITION II-B 3000 WP  
FOR AIR DRILLING OR  
WHERE NITROGEN OR AIR BLOWS ARE EXPECTED**

H<sub>2</sub>S TRIM REQUIRED  
YES   X   NO       



**DRILLING CONTROL  
MATERIAL LIST - CONDITION II - B**

- |                |                                                                                                                                                                                                     |
|----------------|-----------------------------------------------------------------------------------------------------------------------------------------------------------------------------------------------------|
| A              | Texaco Wellhead                                                                                                                                                                                     |
| B              | 3000# W.P. drilling spool with a 2" minimum flanged outlet for kill line and 3" minimum flanged outlet for choke line.                                                                              |
| C              | 3000# W.P. Dual ram type preventer, hydraulic operated with 1" steel, 3000# W.P. control lines (where sub-structure height is adequate, 2 - 3000# W.P. single ram type preventers may be utilized). |
| D              | Rotating Head with fill up outlet and extended Blooe Line.                                                                                                                                          |
| 1,3,4,<br>7,8, | 2" minimum 3000# W.P. flanged full opening steel gate valve, or Halliburton Lo Torc Plug valve.                                                                                                     |
| 2              | 2" minimum 3000# W.P. back pressure valve.                                                                                                                                                          |
| 5,6,9          | 3" minimum 3000# W.P. flanged full opening steel gate valve, or Halliburton Lo Torc Plug valve.                                                                                                     |
| 12             | 3" minimum schedule 80, Grade "B", seamless line pipe.                                                                                                                                              |
| 13             | 2" minimum x 3" minimum 3000# W.P. flanged cross.                                                                                                                                                   |
| 10,11          | 2" minimum 3000# W.P. adjustable choke bodies.                                                                                                                                                      |
| 14             | Cameron Mud Gauge or equivalent ( location optional in choke line).                                                                                                                                 |
| 15             | 2" minimum 3000# W.P. flanged or threaded full opening steel gate valve, or Halliburton Lo Torc Plug valve.                                                                                         |



TEXACO, INC.  
MIDLAND DIVISION  
MIDLAND, TEXAS



SCALE	DATE	EST. NO.	DRG. NO.
DRAWN BY			
CHECKED BY			
APPROVED BY			

EXHIBIT C

1661441

1661441  
OFFICE

4/2/8/9