

District I
PO Box 1988, Hobbs, NM 88241-1988
District II
PO Drawer DD, Artesia, NM 88211-0719
District III
1000 Rio Brazos Rd., Aztec, NM 87410
District IV
PO Box 1088, Santa Fe, NM 87504-2088

State of New Mexico
Energy, Minerals & Natural Resources Department

OIL CONSERVATION DIVISION
PO Box 2088
Santa Fe, NM 87504-2088

Form C-102

Revised February 10, 1994

Instructions on back

Submit to Appropriate District Office

State Lease - 4 Copies

Fee Lease - 3 Copies

☐ AMENDED REPORT

WELL LOCATION AND ACREAGE DEDICATION PLAT

API Number		Pool Code 22800		Pool Name Eumont Yates 7 Rivers Queen	
Property Code 002999		Property Name Britt B			Well Number 31
OGRID No. 005073		Operator Name Conoco, Inc.			Elevation 3560'

10 Surface Location									
UL or lot no.	Section	Township	Range	Lot Idn	Feet from the	North/South line	Feet from the	East/West line	County
L	10	20-S	37-E		1650	South	990	West	Lea

11 Bottom Hole Location If Different From Surface									
UL or lot no.	Section	Township	Range	Lot Idn	Feet from the	North/South line	Feet from the	East/West line	County

12 Dedicated Acres 600	13 Joint or Infill	14 Consolidation Code	15 Order No.
---------------------------	--------------------	-----------------------	--------------

NO ALLOWABLE WILL BE ASSIGNED TO THIS COMPLETION UNTIL ALL INTERESTS HAVE BEEN CONSOLIDATED
OR A NON-STANDARD UNIT HAS BEEN APPROVED BY THE DIVISION

16					17 OPERATOR CERTIFICATION I hereby certify that the information contained herein is true and complete to the best of my knowledge and belief. Signature <u>Jerry W. Hoover</u> Printed Name <u>Jerry W. Hoover</u> Title <u>Sr. Conservation Coordinator</u> Date <u>5/18/94</u>
					18 SURVEYOR CERTIFICATION I hereby certify that the well location shown on this plat was plotted from field notes of actual surveys made by me or under my supervision, and that the same is true and correct to the best of my belief. Date of Survey <u>May 5, 1994</u> Signature and Seal of Professional Surveyor: <u>Earl Foote</u> 8278 Certificate Number <u>8278</u>

District I
PO Box 1988, Hobbs, NM 88241-1988
District II
PO Drawer DD, Artesia, NM 88211-0719
District III
1000 Rio Brava Rd., Aztec, NM 87410
District IV
PO Box 2088, Santa Fe, NM 87504-2088

State of New Mexico
Energy, Minerals & Natural Resources Department

OIL CONSERVATION DIVISION
PO Box 2088
Santa Fe, NM 87504-2088

Form C-102
Revised February 21, 1994
Instructions on back
Submit to Appropriate District Office
State Lease - 4 Copies
Fee Lease - 3 Copies

☐ AMENDED REPORT

WELL LOCATION AND ACREAGE DEDICATION PLAT

1 API Number		2 Pool Code 22800		3 Pool Name Eumont Yates 7 Rivers Queen	
4 Property Code 002999		5 Property Name Britt B			6 Well Number 31
7 OGRID No. 005073		8 Operator Name CONOCO INC.			9 Elevation 3560'

10 Surface Location

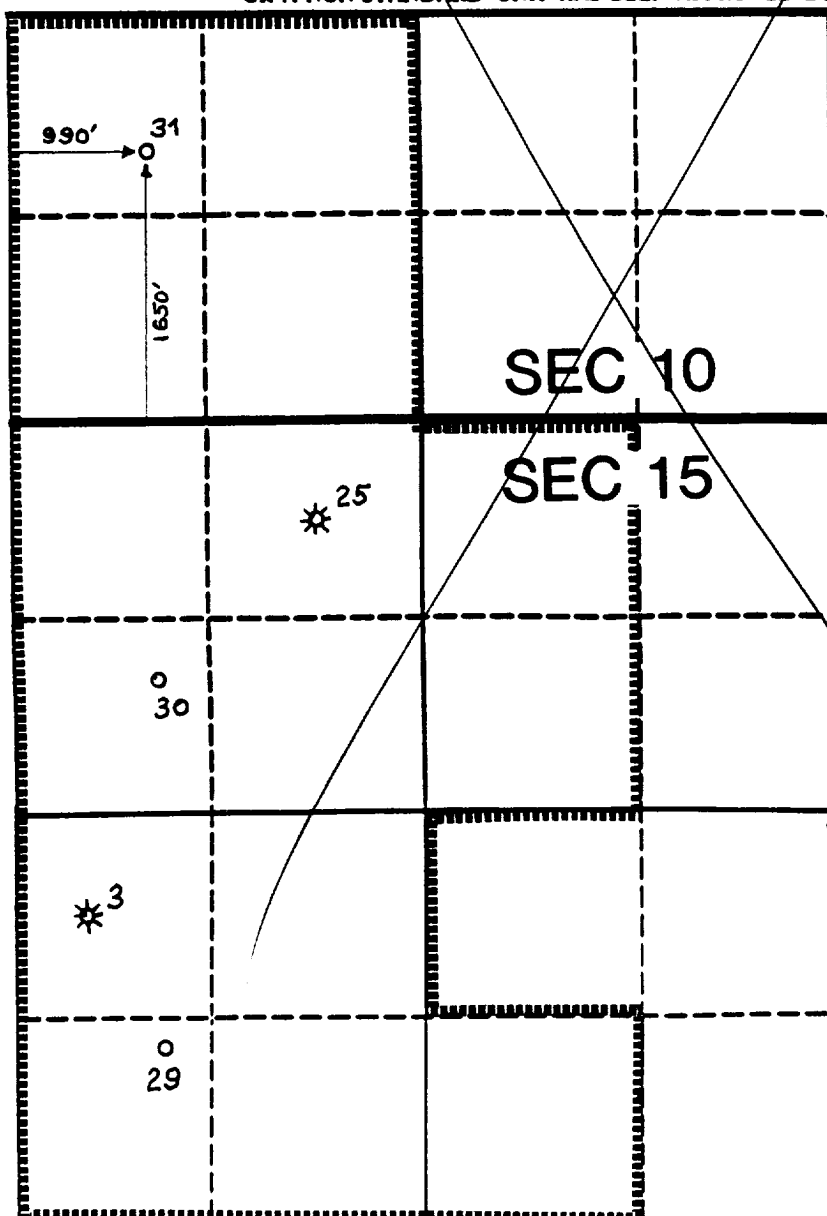
UL or lot no. L	Section 10	Township 20S	Range 37E	Lot Ids	Feet from the 1650	North/South line South	Feet from the 990	East/West line West	County Lea
--------------------	---------------	-----------------	--------------	---------	-----------------------	---------------------------	----------------------	------------------------	---------------

11 Bottom Hole Location If Different From Surface

UL or lot no.	Section	Township	Range	Lot Ids	Feet from the	North/South line	Feet from the	East/West line	County
---------------	---------	----------	-------	---------	---------------	------------------	---------------	----------------	--------

12 Dedicated Acres 600	13 Joint or Infill	14 Consolidation Code	15 Order No. NA
---------------------------	--------------------	-----------------------	--------------------

NO ALLOWABLE WILL BE ASSIGNED TO THIS COMPLETION UNTIL ALL INTERESTS HAVE BEEN CONSOLIDATED OR A NON-STANDARD UNIT HAS BEEN APPROVED BY THE DIVISION



17 OPERATOR CERTIFICATION

I hereby certify that the information contained herein is true and complete to the best of my knowledge and belief

Joseph M. Hoover
Signature
Joseph M. Hoover
Printed Name
Sr. Conservation Coordinator
Title
5/18/94
Date

18 SURVEYOR CERTIFICATION

I hereby certify that the well location shown on this plat was plotted from field notes of actual surveys made by me or under my supervision, and that the same is true and correct to the best of my belief.

Date of Survey
Signature and Seal of Professional Surveyor:

Certificate Number

PROPOSED WELL PLAN OUTLINE

WELL NAME **BRITT B-31**

LOCATION **1650' FSL 990' FWL SEC 10 T-20S R-37E**

TVD IN 1000'	MD	FORMATION TOPS & TYPE	DRILLING PROBLEMS	TYPE OF FORMATION EVALUATION	HOLE SIZE	CASING SIZE DEPTH	FRAC GRAD	FORMATION PRESSURE GRADIENT	MUD WT TYPE	DAYS
0		Red Beds	Swelling in red beds from surface		12-1/4"	420"			Fresh Spn	
1		Anhydrite 1300	Salt Section washout	H2S ON AT 1500'		8-5/8" 24# K33 STC Circulate to surface 325 sxs			Saturated brine 10 ppg	
2		B/Salt 2500 Yates 2660'	Low circulation to TD		7-7/8"					
3		7-Rivers 2910' Queen 3430'								
4		Grayburg 3740' TD 3750'	Stuck log	TD - B/SALT DLLMSPL/GR/CAL CNL/PDC/GR/CAL		3750' 5-1/2" 15.5# K33 LTC Circulate to surface 850 sxs			Oil & Starch at TD for logging FL @ 10 pp 10.0 ppg	
5		est. BHP: 200 psi								
6										
7										
8										
9										
10										
11										
12										
13										
14										
15										
16										

DATE **MAY 1994**

APPROVED **D.W. EUBANK**

DRILLING ENGINEER

WELL NAME: BRITT B NO. 31

LOCATION : 1650' FSL 990' FWL S-15 T-20S R-37E Lea Co.

Casing Program

Surface 8-5/8 inch in 12-1/4 hole at 420 ft.
Inter inch in hole at ft.
Prod 5-1/2 inch in 7-7/8 hole at 3800 ft.

Cementing Program

Surface

Lead 225 sxs Class C Mixed at 13.7 ppg
Additives 4% Gel 2% CaCl
Tail 100 sxs Class C Mixed at 14.8 ppg
Additives 2% CaCl

Intermediate (first stage)

Lead sxs Class Mixed at ppg
Additives
Tail sxs Class Mixed at ppg
Additives
Percent free water Water loss cc

(second stage)

Lead sxs Class Mixed at ppg
Additives
Tail sxs Class Mixed at ppg
Additives
Percent free water Water loss cc

Production (first stage)

Lead 500 sxs Class C Mixed at 12.7 ppg
Additives 5 pps salt 65:35:6
Tail 350 sxs Class C Mixed at 14.6 ppg
Additives 1.1% FloBlock 0.2% SMS
Percent free water Water loss cc

(second stage)

Lead sxs Class Mixed at ppg
Additives
Tail sxs Class Mixed at ppg
Additives
Percent free water Water loss cc

**SURFACE USE PLAN
Conoco Inc.**

Britt B No. 31

The following is required information concerning the possible effect which the drilling of this well may have on the environment, existing road sites, and surrounding acreage. A copy will be posted on the derrick floor so all contractors and sub-contractors will be aware of all items of this plan.

1. Existing Roads

- A. The proposed well site is 1650' FSL & 990' FWL, Sec. 10, T-20S, R-37E, Lea County, New Mexico.
- B. Exhibit "A" is a Vicinity map showing highways and roads in the area and Exhibit "B.1" is a topographic map showing existing lease roads. Directions to the location are as follows:

From Oil Center go 4.8 miles North on State highway #8. Turn east 1-1/2 miles, then turn left for 1 mile and turn right .3 miles to location.

- C. No improvement or maintenance is anticipated for the existing roads.

2. Planned Access Roads

- A. 450' X 12' of new access road will be required.
- B. No turnout will be required.
- C. No culverts, or fills will be required.
- D. No gates, cattleguards, or fences will be required.

3. Location of Existing Wells

Exhibit "B.2" is a plat showing the proposed and offset well locations.

4. Location of Proposed Facilities if Well is Productive

Since this is a proposed gas well, no production facilities are anticipated.

5. Water Supply

Brine and fresh water will be trucked in from the Cooper Water Station located 3 miles South of Monument by the same route described for reaching the drilling location.

6. Source of Construction Materials

Caliche will come from a pit located in SW/4, Sec. 8, T-20S, R-37E and will be transported by the same route as described in the above directions to the drilling site.

7. Methods of Handling Waste Disposal

Waste Disposal: Well cuttings will be disposed in reserve pit. Barrel trash containers to be in accessible locations within drill site area during drilling and completion procedures. All detrimental waste will be hauled away. See Exhibit "D" for location of pits. If well is productive, maintenance waste will be placed in special trash cans and hauled away periodically. Any produced water will be collected in tanks until hauled to an approved disposal system, or separate disposal applications will be submitted to survey for appropriate approval.

8. Ancillary Facilities

A plat showing the 450' X 12' new access road is attached as Exhibit "C".

9. Wellsite Layout

See Exhibit "D". The V-door faces South. The reserve pit will be lined with plastic and the pad and pits are staked. All unguarded pits containing liquids will be fenced and any unguarded pit containing oil and/or toxic liquids will be covered with a fine mesh netting to protect wildlife, if necessary.

10. Plans for Restoration of Surface

Pits will be backfilled and leveled to original condition when they are dry. Commencement of rehabilitation operations will immediately follow removal of drilling and completion equipment from location and rehabilitation of the surface is planned to be completed within 45 days from commencement.

11. Surface Ownership

Federal.

12. Other Information

An archaeological survey has been scheduled for the location and all required rights-of-way and the resultant report will be submitted by Pecos Archeological Consultants.

13. Operator's Representative and Certification

The person who can be contacted concerning compliance of this Surface Use Plan is:

**Jerry W. Hoover
10 Desta Drive West
Midland, Texas 79705
(915) 686-6548**

I hereby certify that I, or persons under my direct supervision, have inspected the proposed drilling site; that I am familiar with the conditions which currently exist; that the statements made in this plan, are, to the best of my knowledge, true and correct; and that the work associated with operations proposed herein will be performed by Conoco Inc. and its contractors and subcontractors in conformity with this plan and the terms and conditions under which it is approved. This statement is subject to the provisions of 18 U.S.C. 1001 for the filing of a false statement.

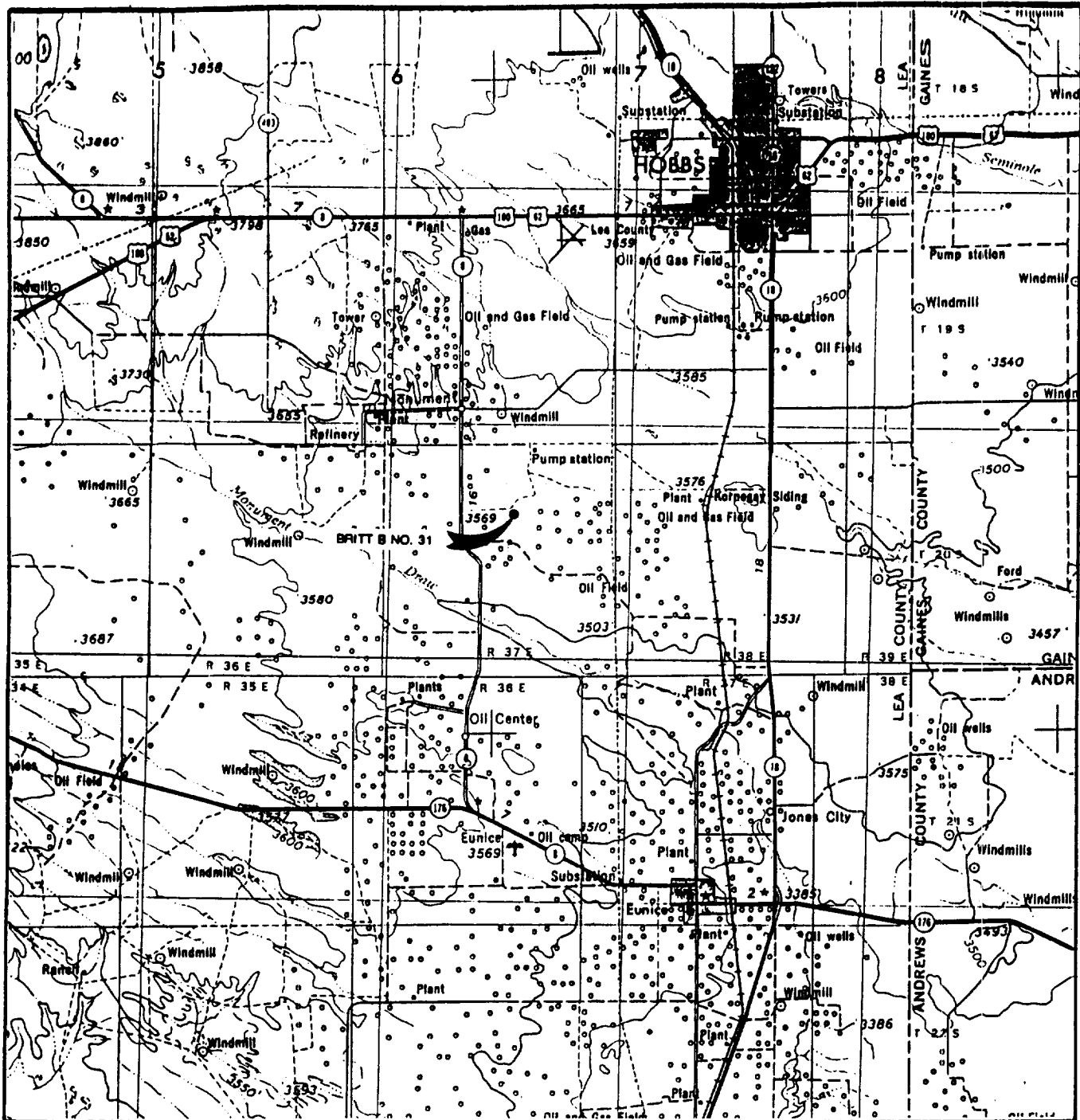
 F/Gary Smith

Gary L. Smith,
Drilling Manager

5/18/94

Date

—

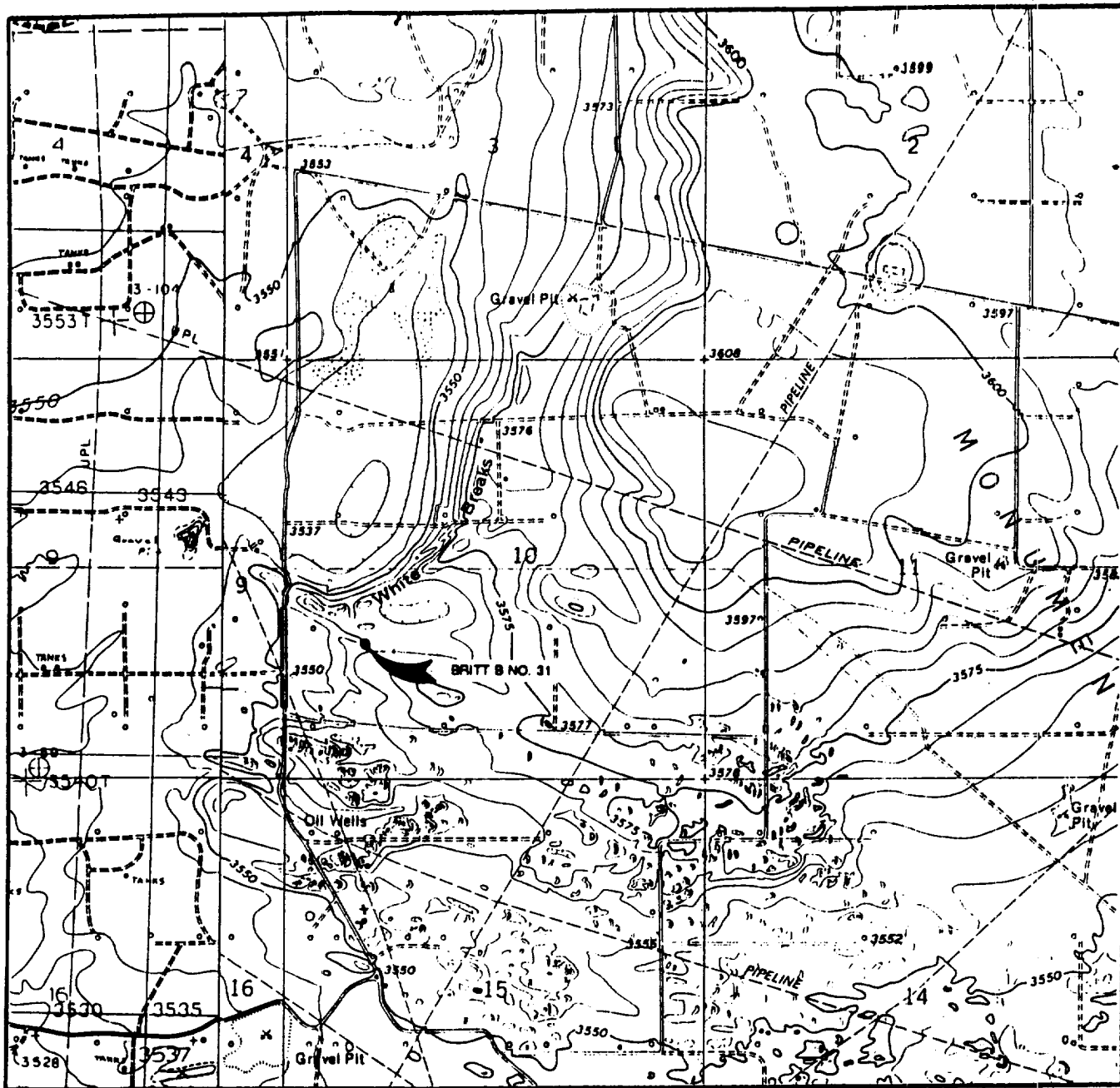


SEC. 10 TWP. 20-S RGE. 37-E
SURVEY N.M.P.M.
COUNTY Lea STATE NM
DESCRIPTION 1650' FSL & 990' FWL
ELEVATION 3560'
OPERATOR Conoco, Inc.
LEASE Britt B No. 31

915-685-3800

EXHIBIT A

LOCATION VERIFICATION MAP



SCALE: 1" = 2000'

CONTOUR INTERVAL 5'

SEC. 10 TWP. 20-S RGE. 37-E

SURVEY N.M.P.M.

COUNTY Lea STATE NM

DESCRIPTION 1650' FSL & 990' FWL

ELEVATION 3560'

OPERATOR Conoco, Inc.

LEASE Britt B No. 31

U.S.G.S. TOPOGRAPHIC MAP

Monument South, New Mexico

Hobbs SW, N. Mex.

WEST TEXAS CONSULTANTS, INC.

ENGINEERS-PLANNERS-SURVEYORS

MIDLAND, TEXAS

915-685-3800

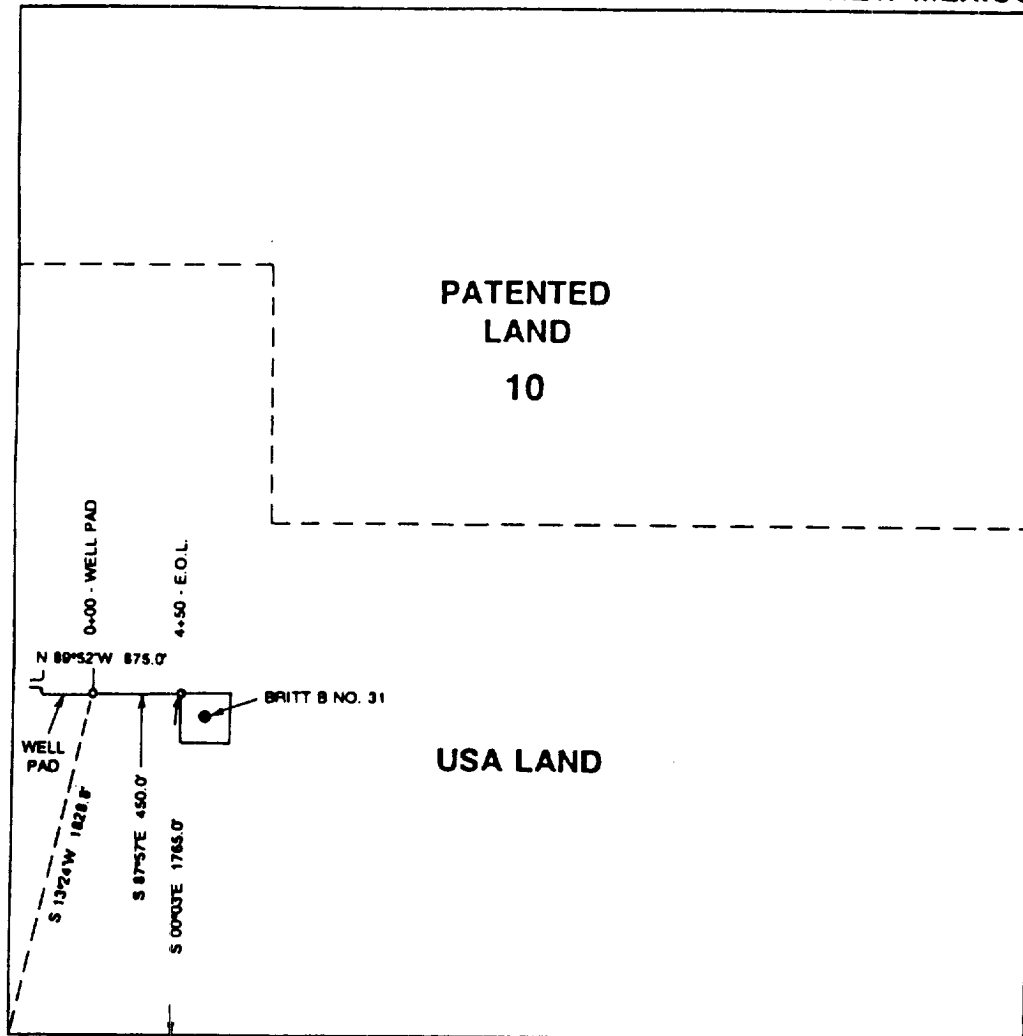
EXHIBIT B.1

[illegible]1
N

Project:	
By:	Date: MAY 2, 1994
Sheet:	County: LEA, NEW MEXICO
Scale:	C.I. LA1016.DRW

EXHIBIT B.2

SECTION 10, TOWNSHIP 20 SOUTH, RANGE 37 EAST, N.M.P.M.
LEA COUNTY, NEW MEXICO



CENTERLINE DESCRIPTION OF PROPOSED ROAD:

BEGINNING at a point in an existing well pad from which point the southwest corner of Section 10, T-20-S, R-37-E, N.M.P.M., Lea County, New Mexico, bears S 13°24'W, 1828.8 feet;

THENCE S 87°57'E, 450.0 feet to a point in well pad BRITT B No. 31, for the end of this line, from which point the southwest corner of Section 10 bears S 00°03'E, 1765.0 feet and N 89°52'W, 875.0 feet.

I hereby certify that this plat was prepared from an actual survey made on the ground, and meets or exceeds all requirements for land surveys, as specified by the State of New Mexico.

Earl Foote
Earl Foote
Registered Professional Surveyor
New Mexico Certificate No. 8278



PROPOSED ROAD FOR CONOCO BRITT B NO. 31

CONOCO, INC.

Proposed Road for Conoco Britt B No. 31
in Section 10, T-20-S, R-37-E,
N.M.P.M. Lea County, New Mexico

WEST TEXAS CONSULTANTS, INC.

ENGINEERS-PLANNERS-SURVEYORS

MIDLAND, TEXAS

Survey Date: 5-5-94	Date: 5/16/94	Scale: 1" = 1000'
WTC No. 43699	Drawn by: RS	Sheet 1 of 1

EXHIBIT C

TRAILER - MOUNTED RIG LAYOUT

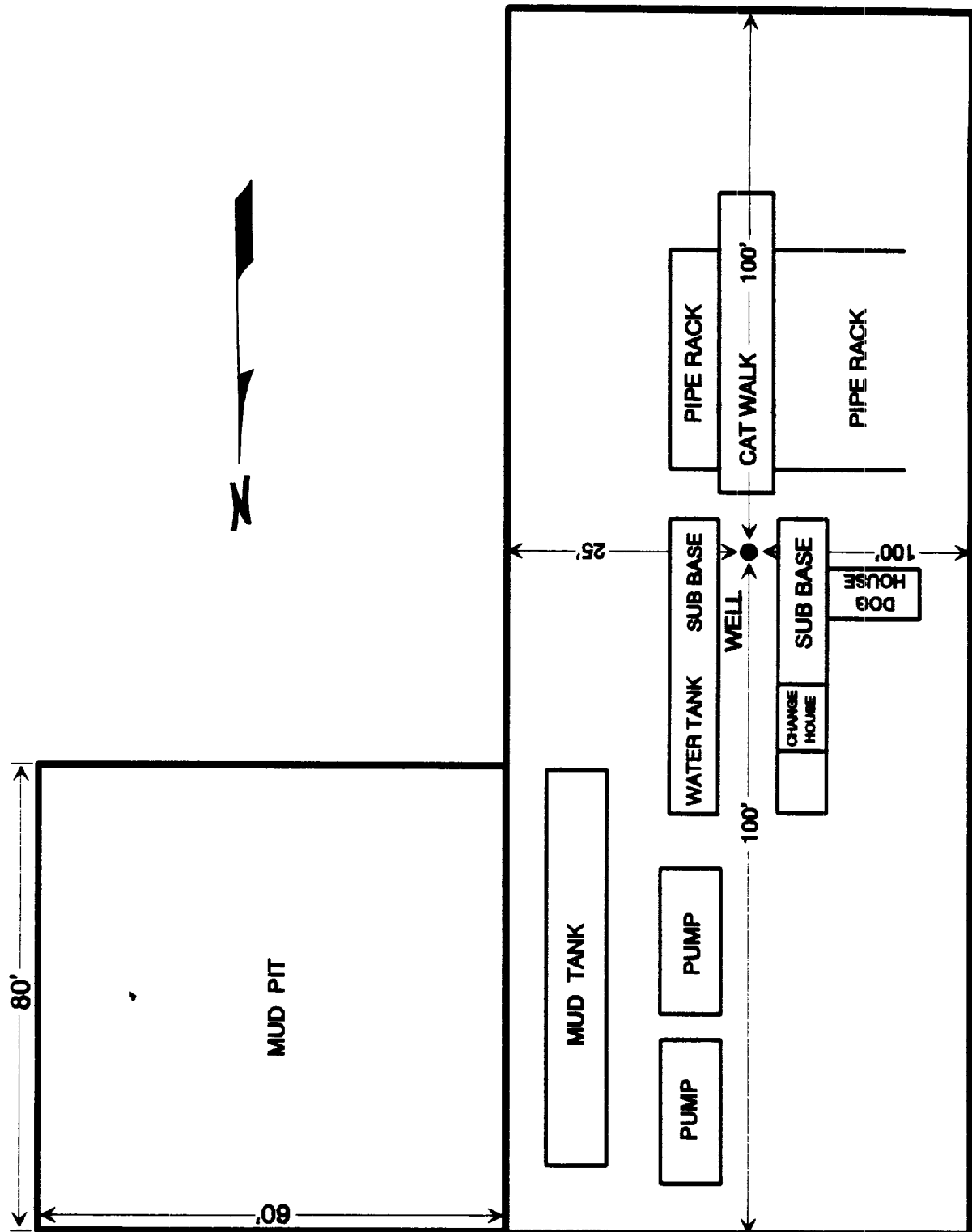
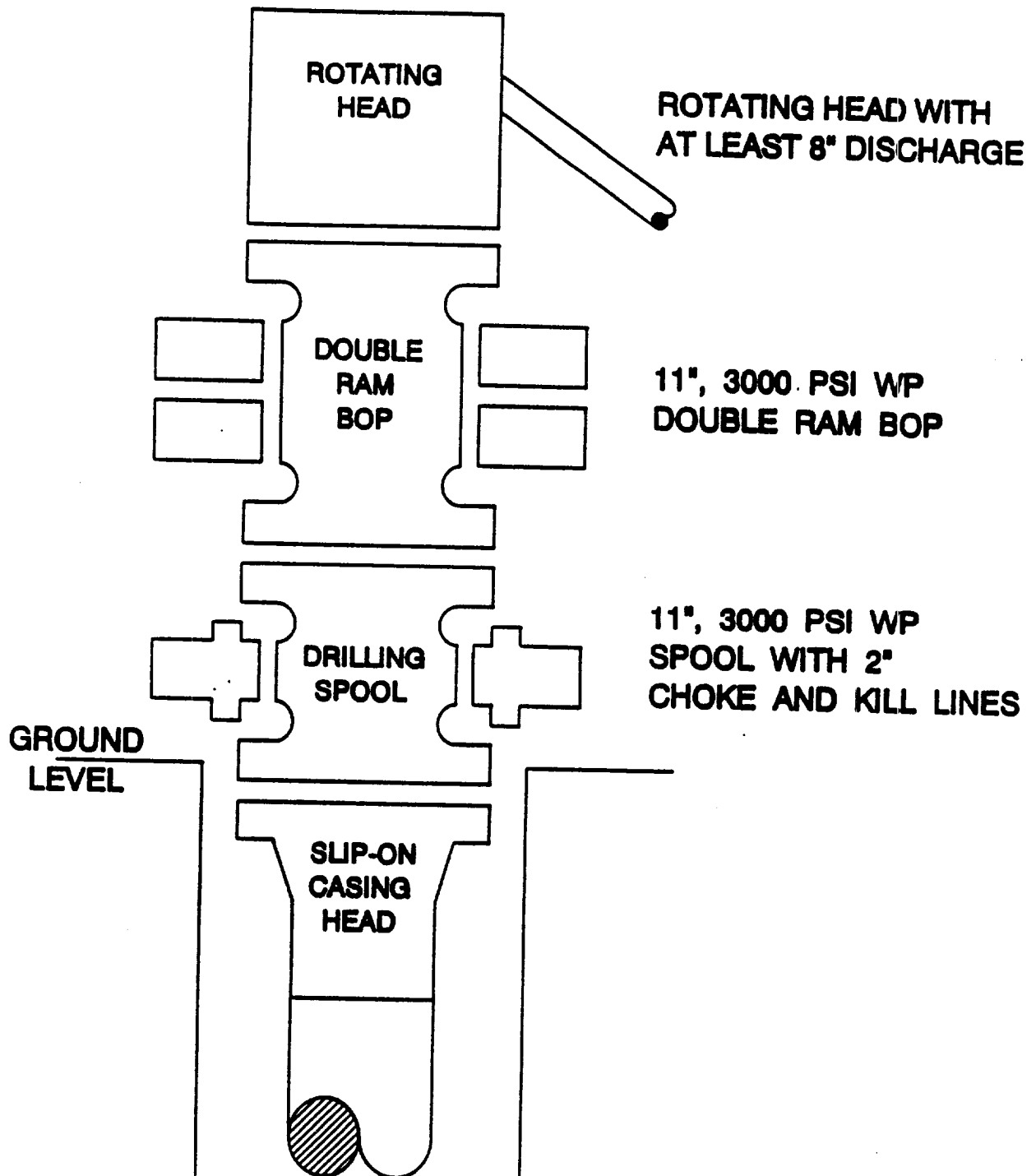
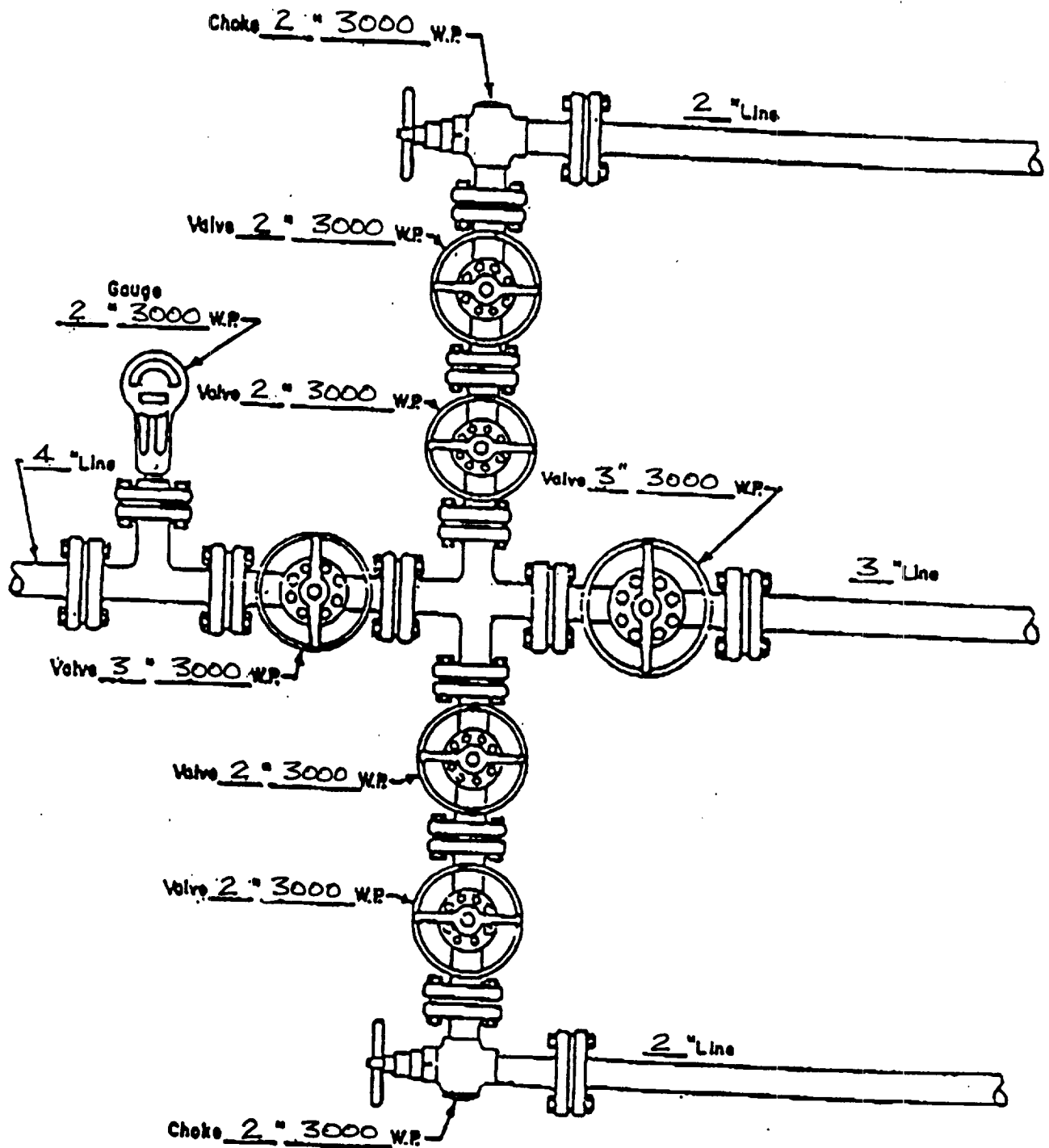


EXHIBIT D

BOP SPECIFICATIONS





MANIFOLD
3000 #W.P.

☒ Manual
☐ Hydraulic

H2S DRILLING OPERATIONS PLAN

Britt B No. 31

I. Hydrogen Sulfide Training

All contractors and subcontractors employed by Conoco will receive or have received training from a qualified instructor within the last twelve months in the following areas prior to commencing drilling operations on this well.

1. The hazards and characteristics of hydrogen sulfide (H₂S)
2. Safety precautions
3. Operations of safety equipment and life support systems.

In addition, contractor supervisory personnel will be trained or prepared in the following areas:

1. The effect of H₂S on metal components in the system, especially high tensile strength tubulars are to be used.
2. Corrective action and shut-down procedures when drilling or reworking a well, blowout prevention and well control procedures, if the nature of work performed involves these items.
3. The contents and requirements of the contingency plan when such plan is required.

All personnel will be required to carry documentation of the above training on their person.

II. H2S EQUIPMENT AND SYSTEMS

1. Safety Equipment

The following safety equipment will be on location:

- A. Wind direction indicators as seen in attached diagram.
- B. Automatic H₂S detection alarm equipment (both audio and visual).
- C. Clearly visible warning signs as seen on the attached diagram. Signs will use the words "POISON GAS" and "CAUTION" with a strong color contrast.
- D. Protective breathing equipment will be located in the dog house and at briefing areas as seen in the attached diagram.

2. Well Control Systems

A. Blowout Prevention Equipment

Equipment includes but is not limited to:

- a. pipe rams to accomodate all pipe sizes
- b. blind rams
- c. choke manifold
- d. closing unit
- e. flare line and means of ignition

B. Communication

The rig contractor will be required to have two-way communication capability. Conoco will have either land-line or mobile telephone capabilities.

C. Mud Program

The mud program has been designed to minimize the volume of H₂S circulated to surface. Proper mud weight, safe drilling practices, and the use of H₂S scavengers when appropriate will minimize hazards when penetrating H₂S bearing zones.

D. Drill Stem Tests

There are no drill stem tests proposed for this well.

III. WELL SITE DIAGRAM

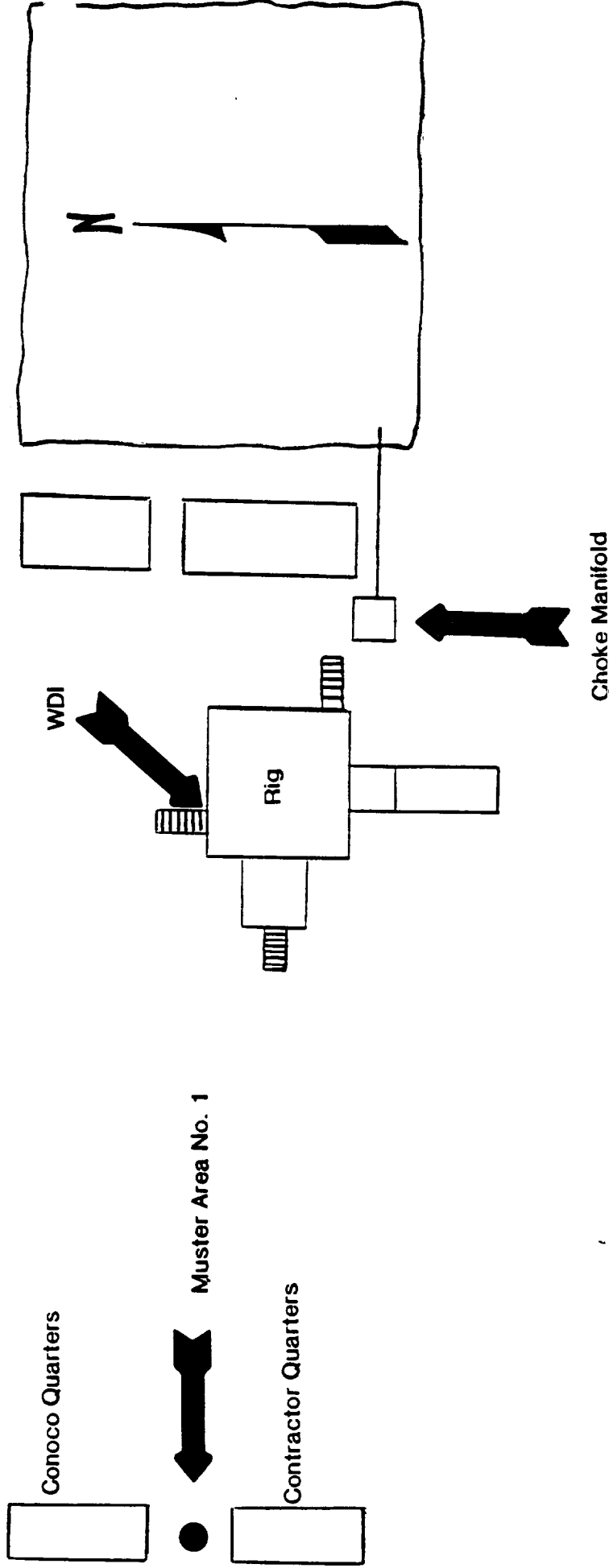
A complete well site diagram including the following information is attached:

- 1. Rig orientation
- 2. Terrain
- 3. Briefing areas
- 4. Ingress and egress
- 5. Pits and flare lines
- 6. Caution and danger signs
- 7. Wind indicators and prevailing wind direction

WDI



Terrain is flat, and covered with native grasses
Two of the three WDI (wind direction indicator) locations will be utilized
(Prevailing winds are SW to NE)



Muster Area No. 2
WDI



RECEIVED

4/3/95



U.S. DEPARTMENT OF JUSTICE
OFFICE OF THE ATTORNEY GENERAL