

APPLICATION FOR PERMIT TO DRILL, DEEPEN, OR PLUG BACK

1a. TYPE OF WORK

DRILL ☒

DEEPEN ☐

PLUG BACK ☐

b. TYPE OF WELL

OIL  
WELL ☐

GAS  
WELL ☒

OTHER

SINGLE  
ZONE ☒

MULTIPLE  
ZONE ☐

2. NAME OF OPERATOR

Conoco, Inc.

3a. Area Code & Phone No.

(915) 686-6548

3. ADDRESS OF OPERATOR

10 Desta Dr. Ste 100W, Midland, TX 79705

4. LOCATION OF WELL (Report location clearly and in accordance with any State requirements.)

At surface

2203' FSL & 2058' FEL

At proposed prod. zone

2203' FSL & 2058' FEL

14. DISTANCE IN MILES AND DIRECTION FROM NEAREST TOWN OR POST OFFICE

15. DISTANCE FROM PROPOSED LOCATION TO NEAREST PROPERTY OR LEASE LINE, FT. (Also to nearest drg. unit line, if any)

13. DISTANCE FROM PROPOSED LOCATION TO NEAREST WELL, DRILLING, COMPLETED, OR APPLIED FOR, ON THIS LEASE, FT.

16. NO. OF ACRES IN LEASE

19. PROPOSED DEPTH

6975'

17. NO. OF ACRES ASSIGNED TO THIS WELL

40

20. ROTARY OR CABLE TOOLS

Rotary

21. ELEVATIONS (Show whether DP, RT, GR, etc.)

3533'

Lea County Controlled Water Basin

22. APPROX. DATE WORK WILL START

9/1/94

PROPOSED CASING AND CEMENTING PROGRAM

HOLE SIZE	CASING SIZE	WEIGHT/FOOT	GRADE	THREAD TYPE	SETTING DEPTH	QUANTITY OF CEMENT
12-1/4"	9-5/8"	36#	K-55	ST&C	1500'	700 sx/circ.
8-3/4"	7"	23#	K-55	LT&C	6975'	1870 sx/circ.

It is proposed to drill this Drinkard gas well according to the drilling plan submitted in the following attachments:

1. Well Location and Acreage Dedication Plat (C-102)
2. Proposed Well Plan Outline
3. Casing & Cementing Program
4. Surface Use Plan
5. EXHIBIT A.1 & A.2: Vicinity and Lease Road Maps
6. EXHIBIT B.1: 7.5" Quadrangle Topo map
7. EXHIBIT B.2: Well Location Map
8. EXHIBIT C: Trailer-mounted Rig Layout
9. BOP and Choke Manifold Specifications
10. H2S Drilling Operations Plan
11. Letter verifying negotiations with surface land owner.

IN ABOVE SPACE DESCRIBE PROPOSED PROGRAM: If proposal is to deepen or plug back, give data on present productive zone and proposed new productive zone. If proposal is to drill or deepen directionally, give pertinent data on subsurface locations and measured and true vertical depths. Give blowout preventer program, if any.

24.

SIGNED

*[Signature]*

TITLE

Sr. Conservation Coordinator

DATE

7/28/94

(This space for Federal or State office use)

PERMIT NO.

APPROVAL DATE

APPROVED BY

*[Signature]*

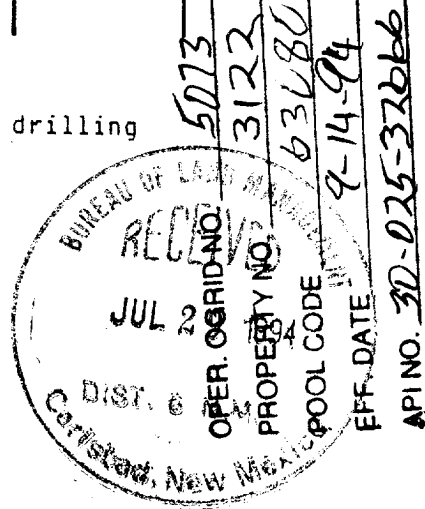
TITLE

(acting) AREA MANAGER

DATE

9-8-94

CONDITIONS OF APPROVAL, IF ANY:



\*See Instructions On Reverse Side

RECEIVED

SEP 12 1994

UCD LIBRARY

District I  
PO Box 1980, Hobbs, NM 88241-1980  
District II  
PO Drawer DD, Artesia, NM 88211-0719  
District III  
1000 Rio Brazos Rd., Aztec, NM 87410  
District IV  
PO Box 2088, Santa Fe, NM 87504-2088

OIL CONSERVATION DIVISION  
PO Box 2088  
Santa Fe, NM 87504-2088

☐ AMENDED REPORT

WELL LOCATION AND ACREAGE DEDICATION PLAT

<sup>1</sup> API Number		<sup>2</sup> Pool Code 63080 62945	<sup>3</sup> Pool Name Warren Drinkard Warren Blinberry-Tubb
<sup>4</sup> Property Code 002123	<sup>5</sup> Property Name WARREN UNIT		<sup>6</sup> Well Number 108
<sup>7</sup> OGRIID No. 005073	<sup>8</sup> Operator Name CONOCO INC.		<sup>9</sup> Elevation 3533

<sup>10</sup>Surface Location

UL or lot no.	Section	Township	Range	Lot Idn	Feet from the	North/South line	Feet from the	East/West line	County
J	28	20-S	38-E		2203	SOUTH	2058	EAST	LEA

<sup>11</sup>Bottom Hole Location If Different From Surface

UL or lot no.	Section	Township	Range	Lot Idn	Feet from the	North/South line	Feet from the	East/West line	County

<sup>12</sup> Dedicated Acres 40	<sup>13</sup> Joint or Infill	<sup>14</sup> Consolidation Code	<sup>15</sup> Order No.
-------------------------------------	-------------------------------	----------------------------------	-------------------------

NO ALLOWABLE WILL BE ASSIGNED TO THIS COMPLETION UNTIL ALL INTERESTS HAVE BEEN CONSOLIDATED  
OR A NON-STANDARD UNIT HAS BEEN APPROVED BY THE DIVISION

16				<p><sup>17</sup> OPERATOR CERTIFICATION</p> <p>I hereby certify that the information contained herein is true and complete to the best of my knowledge and belief.</p> <p><i>[Signature]</i> Signature JERRY W. HOOVER Printed Name SR. CONSERVATION COORDINATOR Title 7/28/94 Date</p>
				<p><sup>18</sup> SURVEYOR CERTIFICATION</p> <p>I hereby certify that the well location shown on this plat was plotted from field notes of actual surveys made by me or under my supervision, and that the same is true and correct to best of my belief.</p> <p>2058'</p> <p>2203'</p> <p>7 EARL FOOTE NEW MEXICO REGISTERED PROFESSIONAL LAND SURVEYOR 8278</p> <p>Date of Survey Signature and Seal of Professional Surveyor <i>[Signature]</i> Certificate Number 8278</p>

NOT RECORDED

SEP 12 1994

JOHN R. B. 1

# PROPOSED WELL PLAY OUTLINE

WELL NAME **WARREN UNIT NO.108**

LOCATION **2203'FSL & 2058'FEL SECT. 28 T-20S R-38E LEA CO.**

TVD IN 1000'	MD	FORMATION TOPS & TYPE	DRILLING PROBLEMS	TYPE OF FORMATION EVALUATION	HOLE SIZE	CASING SIZE DEPTH	FRAC GRAD	FORMATION PRESSURE GRADIENT	MUD WT TYPE	DAYS
0			POSSIBLE HOLE ENLARGEMENT & SLOUGHING		12-1/4"				8.4 FRESH	
1		RUSTLER 1430'			8-3/4"	9-5/8" 1500'			10 BRINE	3
2		BASE SALT 2525'		2-MAN MUD LOGGERS 2500' - TD						
3		YATES 2730'								
		7-RIVERS 2805'								5
		GRAYBURG 3375'								
4		SAN ANDRES 4040'		H2S MONITORS AT 4000'				LESS THAN 8.3		
5		GLOBETTA 5155'	POSSIBLE LOST CIRCULATION OR SEEPAGE. W.U.35 HAD STUCK PIPE DUE TO DIFFERENTIAL STICKING WHILE DRILLING THRU GLOBETTA							8
6		BLINNEY 5805'	POSSIBLE SEEPAGE FROM BLINNEY - TD						9.2 BRINE STARCH	10
		TUBS 6015'		GR-CAL-DOL-MSFL FROM 2500' - TD						
		DRINKARD 6605'		GR-CAL-FDC-CNL-PE-DIELEC, NUBAR FROM 2500' - TD						
7		TD 6975'		BRING GR-CAL TO SURFACE ON ONE SUITE	7"	6975'		LESS THAN 8.3		17
8										

DATE **11 JULY 1994**

APPROVED \_\_\_\_\_  
DRILLING ENGINEER

\_\_\_\_\_  
DIVISION DRILLING SUPERVISOR

WELL NAME: WARREN UNIT NO. 108  
LOCATION : 2105' FNL 660' FWL s-28 T-20S R-38E Lea Co.

Casing Program

Surface 9-5/8" inch in 12-1/4 hole at 1500 ft.  
Inter inch in hole at ft.  
Prod 7 inch in 8-3/4 hole at 6975 ft.

Cementing Program

Surface

Lead 500 sxs Class C Mixed at 13.7 ppg  
Additives 4% GEL 2% A-7 0.2% SMS  
Tail 280 sxs Class C Mixed at 14.8 ppg  
Additives 2% A-7

Intermediate (first stage)

Lead        sxs Class        Mixed at        ppg  
Additives         
Tail        sxs Class        Mixed at        ppg  
Additives         
Percent free water        Water loss        cc

(second stage)

Lead        sxs Class        Mixed at        ppg  
Additives         
Tail        sxs Class        Mixed at        ppg  
Additives         
Percent free water        Water loss        cc

Production (first stage)

Lead 150 sxs Class C Mixed at 12.8 ppg  
Additives 0.2% SMS  
Tail 350 sxs Class C Mixed at 14.8 ppg  
Additives 1% RA-10 0.2% SMS 1% A-7  
Percent free water        Water loss        cc

(second stage)

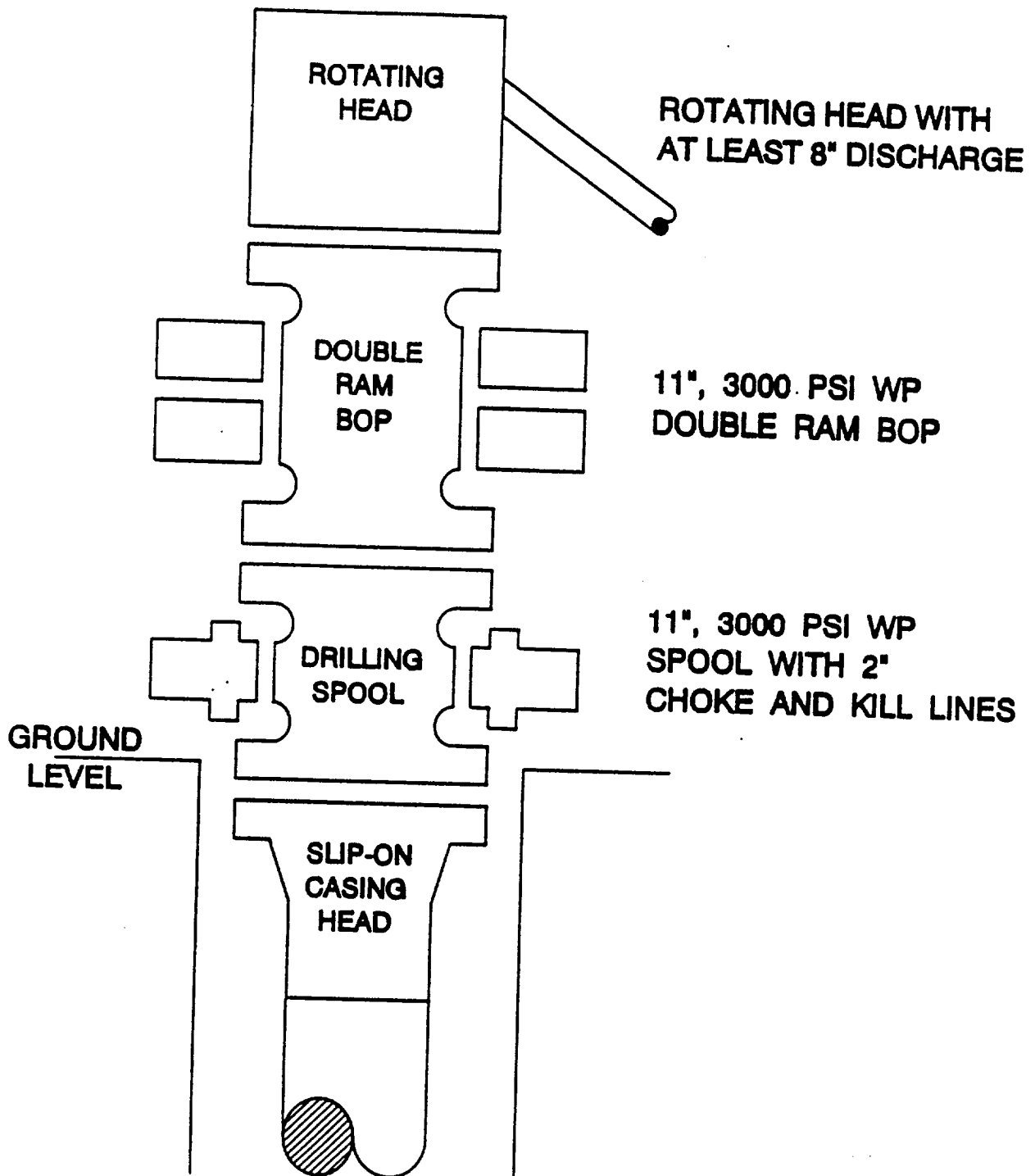
Lead 1070 sxs Class C Mixed at 14.2 ppg  
Additives 8% A-10 0.25% FL-62 0.2% SMS  
Tail 300 sxs Class C Mixed at 14.8 ppg  
Additives 1% BA-10 0.2% SMS 1% A-7  
Percent free water        Water loss        cc

ARMED & DANGEROUS

SEP 16 1994

RECEIVED  
OFFICE

# BOP SPECIFICATIONS





5/1/92

RECEIVED

SEP 12 1994

U.S. DEPARTMENT OF JUSTICE  
FEDERAL BUREAU OF INVESTIGATION