

UNITED STATES  
DEPARTMENT OF THE INTERIOR  
BUREAU OF LAND MANAGEMENT

SUBMIT IN THE FOLLOWING MANNER:  
N.M. OIL & GAS COMMISSION  
P.O. BOX 1980  
HOBBS, NEW MEXICO 88240  
Budget Bureau No. 1004-0136  
Expires August 31, 1985  
APPLICATION AND SERIAL NO.

APPLICATION FOR PERMIT TO DRILL, DEEPEN, OR PLUG BACK

1a. TYPE OF WORK

DRILL ☒

DEEPEN ☐

PLUG BACK ☐

b. TYPE OF WELL

OIL WELL ☒

GAS WELL ☐

OTHER

SINGLE ZONE ☒

MULTIPLE ZONE ☐

2. NAME OF OPERATOR

POGO PRODUCING COMPANY

3. ADDRESS OF OPERATOR

P. O. BOX 10340, MIDLAND, TEXAS 79702

4. LOCATION OF WELL (Report location clearly and in accordance with any State requirements.)

At surface

1980' FSL AND 1980' FEL OF SECTION 27

At proposed prod. zone

14. DISTANCE IN MILES AND DIRECTION FROM NEAREST TOWN OR POST OFFICE\*

30 AIR MILES WEST OF EUNICE, NEW MEXICO

15. DISTANCE FROM PROPOSED\*

LOCATION TO NEAREST  
PROPERTY OR LEASE LINE, FT.  
(Also to nearest drlg. unit line, if any)

660'

16. NO. OF ACRES IN LEASE

640

17. NO. OF ACRES ASSIGNED  
TO THIS WELL

40

18. DISTANCE FROM PROPOSED LOCATION\*

TO NEAREST WELL, DRILLING, COMPLETED,  
OR APPLIED FOR, ON THIS LEASE, FT.

1320'

19. PROPOSED DEPTH

9000'

20. ROTARY OR CABLE TOOLS

ROTARY

21. ELEVATIONS (Show whether DF, RT, GR, etc.)

3641.8

**Carlsbad Controlled Water Basin**

22. APPROX. DATE WORK WILL START\*

UPON APPROVAL

23. PROPOSED CASING AND CEMENTING PROGRAM

SIZE OF HOLE	SIZE OF CASING	WEIGHT PER FOOT	SETTING DEPTH	QUANTITY OF CEMENT
17-1/2"	13-3/8"	54.5#	800'	SUFFICIENT TO CIRCULATE
11"	8-5/8"	32#	4600'	SUFFICIENT TO CIRCULATE
7-7/8"	5-1/2"	17#	9000'	TO TIE BACK 200 FEET INTO 8-5/8"

AFTER SETTING PRODUCTION CASING, PAY ZONE WILL BE PERFORATED  
AND STIMULATED AS NECESSARY.

SEE ATTACHED FOR: SUPPLEMENTAL DRILLING DATA  
BOP SKETCH  
SURFACE USE AND OPERATIONS PLAN  
HYDROGEN SULFIDE DRILLING OPERATIONS PLAN

OPER. OGRID NO. 17891

PROPERTY NO. 13460

POOL CODE 51683

EFF DATE 9-30-94

SPIN NO. 30-225-32685

**Approval Subject to  
General Requirements and  
Special Stipulations  
Attached**

IN ABOVE SPACE DESCRIBE PROPOSED PROGRAM: If proposal is to deepen or plug back, give data on present productive zone and proposed new productive zone. If proposal is to drill or deepen directionally, give pertinent data on subsurface locations and measured and true vertical depths. Give blowout preventer program, if any.

24.

SIGNED

*Richard L. Dwyer*

TITLE Division Operations Mgr.

DATE August 31, 1994

(This space for Federal or State office use)

PERMIT NO.

APPROVAL DATE

APPROVED BY

TITLE

**AREA MANAGER**

DATE

9/27/94

CONDITIONS OF APPROVAL, IF ANY:

APPROVAL OF THIS APPLICATION DOES NOT WARRANT  
OR CERTIFY THAT THE APPLICANT HOLDS LEGAL OR  
COURTABLE TITLE TO THOSE RIGHTS IN THE SUBJECT  
LEASE WHICH WOULD ENTITLE THE APPLICANT TO  
\*See Instructions On Reverse Side

Title 18 U.S.C. Section 1001, makes it a crime for any person knowingly and willfully to make to any department or agency of the United States any false, fictitious or fraudulent statements or representations as to any matter within its jurisdiction.

Submit to Appropriate  
District Office  
State Lease - 4 copies  
Fee Lease - 3 copies

State of New Mexico  
Energy, Minerals and Natural Resources Department

Form C-102  
Revised 1-1-89

OIL CONSERVATION DIVISION

P.O. Box 2088  
Santa Fe, New Mexico 87504-2088

DISTRICT I

P.O. Box 1980, Hobbs, NM 88240

DISTRICT II

P.O. Drawer DD, Artesia, NM 88210

DISTRICT III

1000 Rio Brazos Rd., Aztec, NM 87410

WELL LOCATION AND ACREAGE DEDICATION PLAT

All Distances must be from the outer boundaries of the section

Operator <b>POGO PRODUCING CO.</b>			Lease <b>PRIZE FEDERAL</b>		Well No. <b>8</b>
Unit Letter <b>J</b>	Section <b>27</b>	Township <b>22 SOUTH</b>	Range <b>32 EAST</b>	NMPM	County <b>LEA</b>
Actual Footage Location of Well: <b>1980</b> feet from the <b>SOUTH</b> line and <b>1980</b> feet from the <b>EAST</b> line					
Ground Level Elev. <b>3641.8'</b>	Producing Formation <b>BONE SPRINGS</b>		Pool <b>RED TANK BONE SPRINGS</b>		Dedicated Acreage: <b>40</b> Acres

1. Outline the acreage dedicated to the subject well by colored pencil or hachure marks on the plat below.

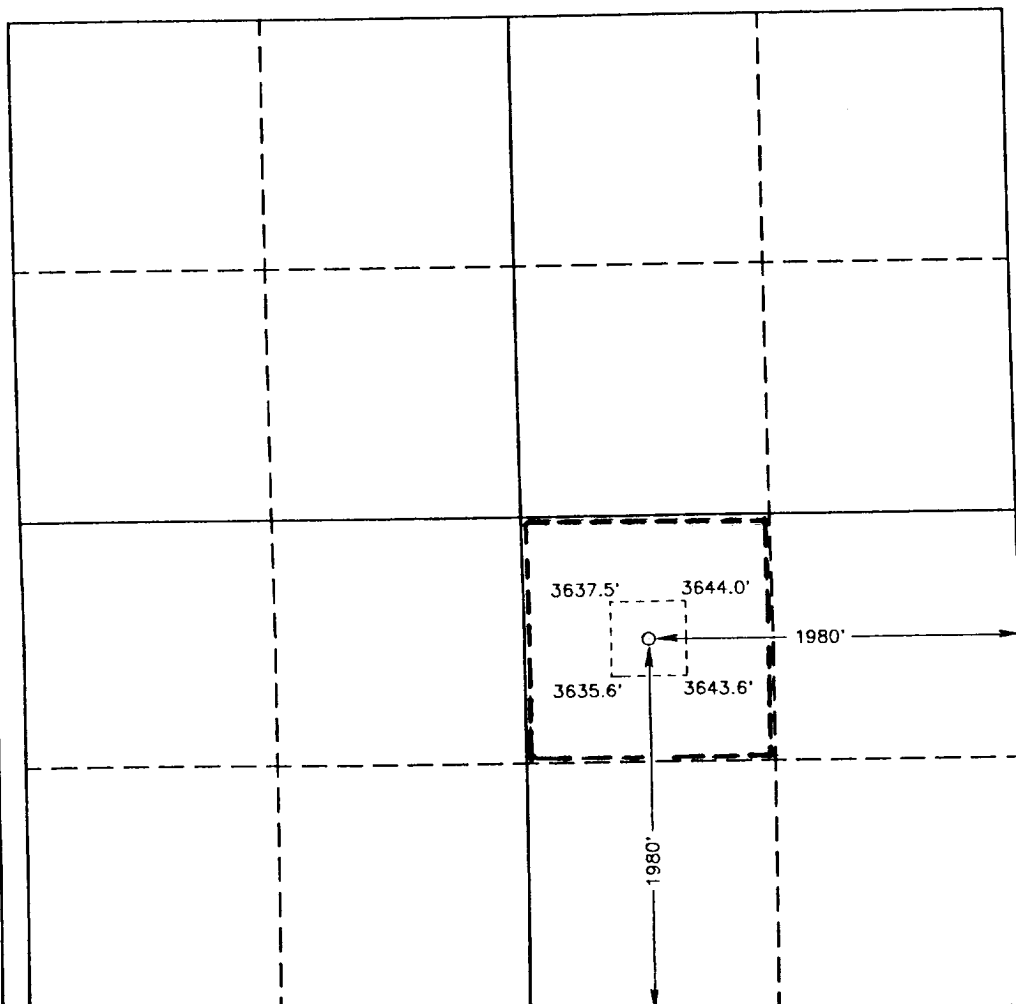
2. If more than one lease is dedicated to the well, outline each and identify the ownership thereof (both as to working interest and royalty).

3. If more than one lease of different ownership is dedicated to the well, have the interest of all owners been consolidated by communitization, unitization, force-pooling, etc.?

☐ Yes ☐ No If answer is "yes" type of consolidation \_\_\_\_\_

If answer is "no" list of owners and tract descriptions which have actually been consolidated. (Use reverse side of this form necessary. \_\_\_\_\_)

No allowable will be assigned to the well unit all interests have been consolidated (by communitization, unitization, forced-pooling, otherwise) or until a non-standard unit, eliminating such interest, has been approved by the Division.



OPERATOR CERTIFICATION

I hereby certify the the information contained herein is true and complete to the best of my knowledge and belief.

Signature  
*Richard L. Wright*  
Printed Name  
**Richard L. Wright**  
Position  
**Division Operations Mgr.**  
Company  
**POGO PRODUCING COMPANY**  
Date  
**August 10, 1994**

SURVEYOR CERTIFICATION

I hereby certify that the well location shown on this plat was plotted from field notes of actual surveys made by me or under my supervision, and that the same is true and correct to the best of my knowledge and belief.

Date Surveyed  
**MAY 13, 1993**

Signature & Seal of  
Professional Surveyor

*[Signature]*  
GARY L. JONES  
NEW MEXICO  
7977  
Certified by  
JOHN W. WEST 676  
RONALD J. EIDSON 3239  
DON L. JONES 7977  
93-11-0868

SUPPLEMENTAL DRILLING DATA

POGO PRODUCING COMPANY

PRIZE FEDERAL WELL NO. 8

1. SURFACE FORMATION: Quaternary.

2. ESTIMATED TOPS OF GEOLOGIC MARKERS:

Anhydrite	850'
Delaware Lime	4800'
Cherry Canyon	6100'
Brushy Canyon	7400'
Bone Springs	8800'

3. ANTICIPATED POSSIBLE HYDROCARBON BEARING ZONES:

Delaware	Oil
Bone Springs	Oil

4. PROPOSED CASING AND CEMENTING PROGRAM:

CASING SIZE	SETTING DEPTH		WEIGHT	GRADE	JOINT
	FROM	TO			
13-3/8"	0	800'	54.5#	J-55	STC
8-5/8"	0	4300'	32#	J-55	STC
"	4300'	4600'	32#	S-80	STC
5-1/2"	0	1000'	17#	N-80	LTC
"	1000'	7000'	17#	J-55	LTC
"	7000'	9000'	17#	N-80	LTC

MINIMUM  
DESIGN FACTORS: COLLAPSE 1.1 BURST 1.1 TENSION 1.2

13-3/8" casing to be cemented with 500 sacks of light cement tailed in with 200 sacks of Class "C" with 2% CaCl. Cement to circulate.

8-5/8" casing to be cemented with 1200 sacks of light cement with 10% salt tailed in with 200 sacks of premium cement with 1% CaCl. Cement to circulate.

5-1/2" production casing is to be cemented with approximately 500 sacks

of light cement followed by 400 sacks of premium cement. Cement to tie back 200 feet into 8-5/8" casing.

If, during drilling operations, need for stage cementing of casing is indicated, staging tool(s) will be run and positioned to best suit hole conditions at time casing is run.

Cement volumes may be adjusted and cement may have lost circulation and/or other additives depending on hole conditions at the time casing is run.

#### 5. PRESSURE CONTROL EQUIPMENT:

Blowout prevention equipment, while drilling the 11" hole, will be either a 3000 psi working pressure double ram type preventer or a 3000 psi working pressure annular type preventer.

Blow-out prevention equipment, while drilling below the 8-5/8" casing seat, will be a 3000 psi working pressure BOP stack. A BOP sketch is attached.

#### 6. CIRCULATING MEDIUM:

Surface to 800 feet: Fresh water spud mud. Viscosity 30 to 36 as required for hole cleaning.

800 feet to 4600 feet: Brine conditioned as necessary for control of viscosity. Weight 9.8 to 10. pH 9 to 10. Viscosity 32 to 36.

4600 feet to T.D.: Water base drilling fluid conditioned as necessary for control of weight, viscosity, pH and water-loss. Weight 9 to 10. Viscosity 38-45. pH 9 to 10. Filtrate while drilling pay zone 6 to 15.

#### 7. AUXILIARY EQUIPMENT:

A mud logging trailer will be in use while drilling below the intermediate casing.

8. TESTING, LOGGING, AND CORING PROGRAM:

Drill stem tests will be made when well data indicate a test is warranted.

It is planned that electric logs will include GR-CNL-Density logs and GR-DLL logs.

No coring is planned.

9. ABNORMAL PRESSURES, TEMPERATURES, OR HYDROGEN SULFIDE GAS:

No abnormal pressures or temperatures are expected.

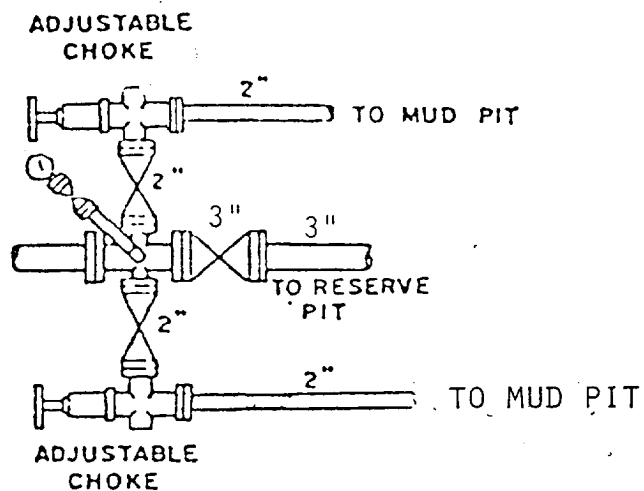
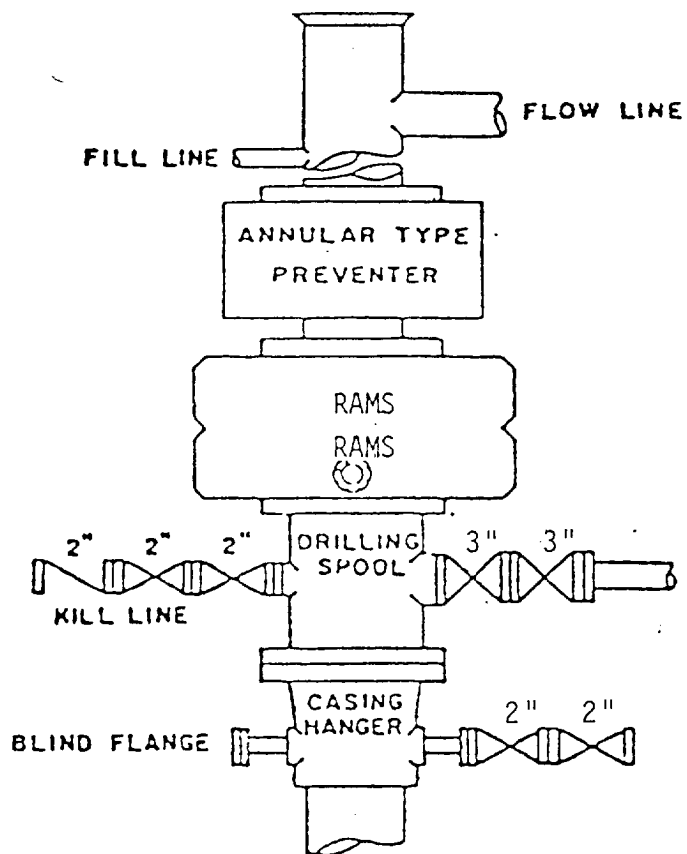
Expected bottom hole pressure is about 3500 psi.

Expected bottom hole temperature is about 125 degrees Fahr.

No hydrogen sulfide gas is expected. The production stream of Pogo Producing Company's wells in this area have been tested specifically for hydrogen sulfide gas and test results were negative. However, since it is possible that low-volume hydrogen sulfide gas may be present in permeable water zones of the Castile formation, drilling operations below the surface casing will be in accordance with the attached "HYDROGEN SULFIDE DRILLING OPERATIONS PLAN" until intermediate casing is set and cemented and this possible source of hydrogen sulfide gas is cased off.

10. ANTICIPATED STARTING DATE:

It is planned that operations will commence upon approval of this application, with drilling and completion operations lasting about 30 days.



BOP STACK

3000 PSI WORKING PRESSURE

BOP ARRANGEMENT

7/7/1  
111

1978-1979

1979-1980

1980-1981