

District I
PO Box 1980, Hobbs, NM 88241-1980
District II
PO Drawer DD, Artesia, NM 88211-0719
District III
1000 Rio Brazos Rd., Aztec, NM 87410
District IV
PO Box 2088, Santa Fe, NM 87504-2088

OIL CONSERVATION DIVISION
P.O. Box 2088
Santa Fe, NM 87504-2088

☐ AMENDED REPORT

APPLICATION FOR PERMIT TO DRILL, RE-ENTER, DEEPEN, PLUGBACK, OR ADD A ZONE

¹ Operator name and Address MERIDIAN OIL INC. P.O. Box 51810 Midland, TX 79710-1810		² OGRID Number 26485
		³ API Number 30-025-32833
⁴ Property Code 16453	⁵ Property Name EAST CHECKERBOARD '19' STATE	⁶ Well Number NO. 1

⁷ Surface Location									
UL or lot no.	Section	Township	Range	Lot. Idn	Feet from the	North/South Line	Feet from the	East/West line	County
G	19	22S	33E		1980'	NORTH	1980'	EAST	LEA

⁸ Proposed Bottom Hole Location If Different From Surface									
UL or lot no.	Section	Township	Range	Lot. Idn	Feet from the	North/South Line	Feet from the	East/West line	County
⁹ Proposed Pool 1 BOOTLEG RIDGE DELAWARE					¹⁰ Proposed Pool 2				

¹¹ Work Type Code NW	¹² Well Type Code OIL	¹³ Cable/Rotary ROTARY	¹⁴ Lease Type Code STATE	¹⁵ Ground Level Elevation 3654'
¹⁶ Multiple N/A	¹⁷ Proposed Depth 5300'	¹⁸ Formations DELAWARE	¹⁹ Contractor UNKNOWN	²⁰ Spud Date UPON APPROVAL

²¹ Proposed Casing and Cement Program					
Hole Size	Casing Size	Casing weight/foot	Setting Depth	Sacks of Cement	Estimated TOC
12 1/4"	8 5/8"	28#	850'	1000 SXS	CIRC.
7 7/8"	5 1/2"	15.5#	5300'	1600 SXS	CIRC

²² Describe the proposed program. If this application is to DEEPEN or PLUG BACK give the data on the present productive zone and proposed new productive zone. Describe the blowout prevention program, if any. Use additional sheets if necessary

11" 3m WP BOP W/ROTATING HEAD TO BE INSTALLED ON THE 8 5/8" CSG.

Permit Expires 6 Months From Approval
Date Unless Drilling Underway.

²³ I hereby certify that the information given above is true and complete to the best of my knowledge and belief

Signature:

Printed name: **DONNA WILLIAMS**

Title: **REGULATORY ASSISTANT**

Date:
1/24/95

Phone:
915-688-6943

OIL CONSERVATION DIVISION

Approved by: **DAVID L. SEXTON**

Title:

Approval Date: **JAN 20 1995** Expiration Date:

Conditions of Approval:

Attached ☐

District I
PO Box 1980, Hobbs, NM 88241-1980
District II
PO Drawer DD, Artesia, NM 88211-0719
District III
1000 Rio Brazos Rd., Aztec, NM 87410
District IV
PO Box 2088, Santa Fe, NM 87504-2088

State of New Mexico
Energy, Minerals & Natural Resources Department

OIL CONSERVATION DIVISION
PO Box 2088
Santa Fe, NM 87504-2088

Form C-102
Revised February 21, 1994
Instructions on back
Submit to Appropriate District Office
State Lease - 4 Copies
Fee Lease - 3 Copies

☐ AMENDED REPORT

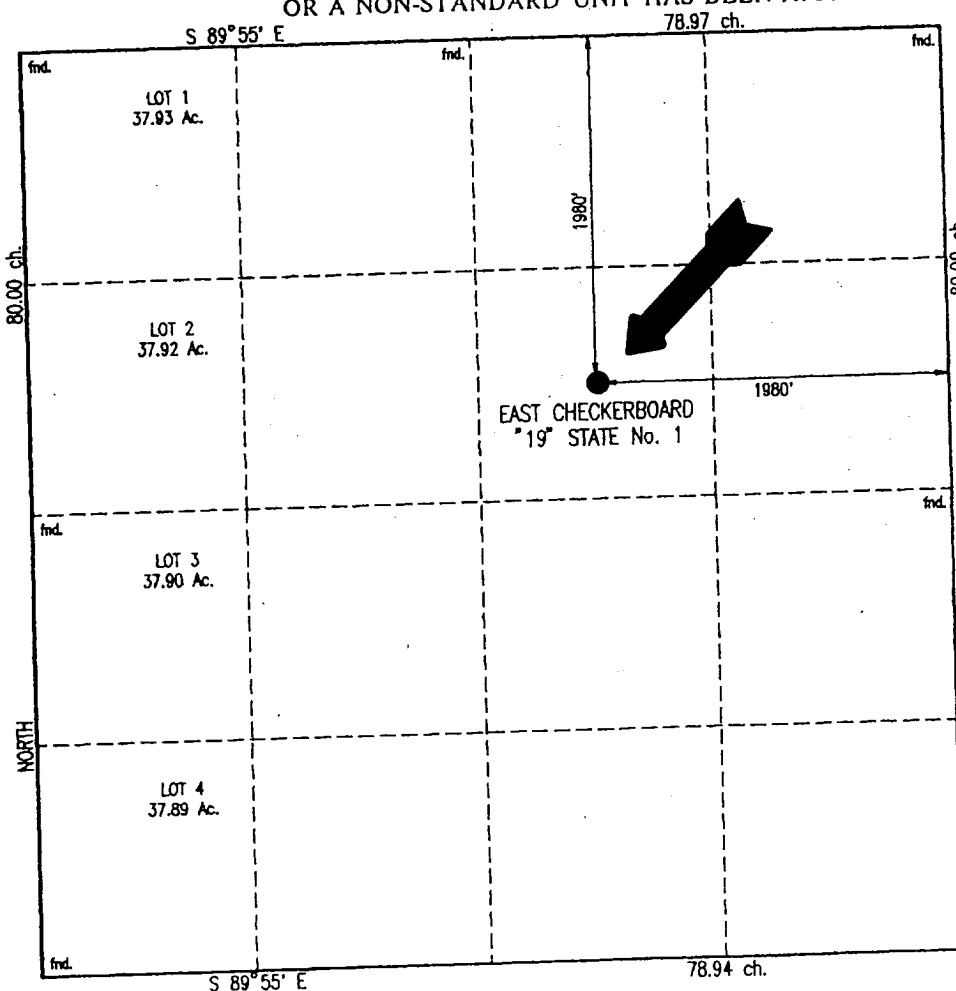
WELL LOCATION AND ACREAGE DEDICATION PLAT

¹ API Number 30-D-25-32833		² Pool Code 206930		³ Pool Name Bootleg Ridge Delaware	
⁴ Property Code 16453		⁵ Property Name EAST CHECKERBOARD '19' STATE			⁶ Well Number 1
⁷ OGRID No. 26485		⁸ Operator Name MERIDIAN OIL INC.			⁹ Elevation 3654

¹⁰ Surface Location									
UL or lot no.	Section	Township	Range	Lot Idn	Feet from the	North/South line	Feet from the	East/West line	County
G	19	22 S	33 E		1980	NORTH	1980	EAST	LEA

¹¹ Bottom Hole Location If Different From Surface									
UL or lot no.	Section	Township	Range	Lot Idn	Feet from the	North/South line	Feet from the	East/West line	County
SAME AS SURFACE									
¹² Dedicated Acres 40	¹³ Joint or Infill	¹⁴ Consolidation Code	¹⁵ Order No.						

NO ALLOWABLE WILL BE ASSIGNED TO THIS COMPLETION UNTIL ALL INTERESTS HAVE BEEN CONSOLIDATED
OR A NON-STANDARD UNIT HAS BEEN APPROVED BY THE DIVISION



17 OPERATOR CERTIFICATION	
I hereby certify that the information contained herein is true and complete to the best of my knowledge and belief.	
Signature	Donna Williams
Printed Name	Regulatory Assistant
Title	
Date	1/24/95
18 SURVEYOR CERTIFICATION	
I hereby certify that the well location shown on this plat was plotted from field notes of actual surveys made by me or under my supervision, and that the same is true and correct to the best of my belief.	
JANUARY 23, 1995	
Date of Survey	
Signature and Seal of Professional Surveyor:	
Certificate Number 8466	

RECEIVED

JUN 11 1977

INTELLIGENCE
OFFICE