

N.M. OFFICE FOR LAND MANAGEMENT
P.O. BOX 10000
UNITED STATES DEPARTMENT OF THE INTERIOR
BUREAU OF LAND MANAGEMENT

CONTACT RECEIVING
OFFICE FOR NUMBER
OF COPIES JUNE
(Other instructions on
reverse side)

BLM Roswell District
Modified Form No.
NM060-3160-2

APPLICATION FOR PERMIT TO DRILL, DEEPEN, OR PLUG BACK

1a. TYPE OF WORK DRILL <input checked="" type="checkbox"/> DEEPEN <input type="checkbox"/> PLUG BACK <input type="checkbox"/>		5. LEASE DESIGNATION AND SERIAL NO. LC 031695B	
b. TYPE OF WELL OIL WELL <input checked="" type="checkbox"/> GAS WELL <input type="checkbox"/> OTHER <input type="checkbox"/>		6. IF INDIAN, ALLOTTEE OR TRIBE NAME	
2. NAME OF OPERATOR Conoco, Inc.		7. UNIT AGREEMENT NAME Warren Unit <i>RI-Tubb</i>	
3. ADDRESS OF OPERATOR 10 Desta Dr. Ste 100W, Midland, TX 79705		8. FARM OR LEASE NAME	
4. LOCATION OF WELL (Report location clearly and in accordance with any State requirements.) At surface 760' FSL & 660' FWL At proposed prod. zone 760' FSL & 660' FWL <i>Unit M</i>		9. WELL NO. 118	
14. DISTANCE IN MILES AND DIRECTION FROM NEAREST TOWN OR POST OFFICE		10. FIELD AND POOL OR WILDCAT Warren Blinbry-Tubb	
15. DISTANCE FROM PROPOSED LOCATION TO NEAREST PROPERTY OR LEASE LINE, FT. (Also to nearest dir. unit line, if any)		11. SEC., T., R., M., OR SLE. AND SURVEY OR AREA Sec. 28, T-20S, R-38E	
16. NO. OF ACRES IN LEASE		12. COUNTY OR PARISH Lea	
17. NO. OF ACRES ASSIGNED TO THIS WELL 40		13. STATE NM	
18. DISTANCE FROM PROPOSED LOCATION TO NEAREST WELL, DRILLING, COMPLETED, OR APPLIED FOR, ON THIS LEASE, FT. 6975'		19. PROPOSED DEPTH 6975'	
20. ROTARY OR CABLE TOOLS Rotary		21. APPROX. DATE WORK WILL START 2/15/95	
22. ELEVATIONS (Show whether DP, RT, GR, etc.) 3516'		23. APPROX. DATE WORK WILL START 2/15/95	

PROPOSED CASING AND CEMENTING PROGRAM

HOLE SIZE	CASING SIZE	WEIGHT/FOOT	GRADE	THREAD TYPE	SETTING DEPTH	QUANTITY OF CEMENT
12-1/4"	8-5/8"	24#	K-55	ST&C	1500'	920 sx/circ.
7-7/8"	5-1/2"	15.5#	K-55	LT&C	6975'	1940 sx/circ.

It is proposed to drill this well according to the drilling plan submitted in the following attachments:

- Well Location and Acreage Dedication Plat (C-102)
- Proposed Well Plan Outline
- Surface Use Plan
- EXHIBIT A.1 & A.2: Vicinity and Lease Road Maps
- EXHIBIT B: 7.5" Quadrangle Topo Map
- EXHIBIT C.1 - C.4: Road, electric line, and flowlines
- EXHIBIT D: Trailer-mounted Rig Layout
- BOP and Choke Manifold Specifications
- H2S Drilling Operations Plan
- Letter verifying negotiations with surface land owner.

IN ABOVE SPACE DESCRIBE PROPOSED PROGRAM: If proposal is to deepen or plug back, give data on present productive zone and proposed new productive zone. If proposal is to drill or deepen directionally, give pertinent data on subsurface locations and proposed, and true vertical depths. Give blowout preventer program, if any.

SIGNED *[Signature]* TITLE Sr. Conservation Coordinator DATE 1/9/95
(This space for Federal or State office use)

PERMIT NO. _____ APPROVAL DATE _____
APPROVED BY *[Signature]* TITLE AREA MANAGER DATE 2-9-95
CONDITIONS OF APPROVAL, IF ANY:

APPROVAL SUBJECT TO
GENERAL REQUIREMENTS AND
SPECIAL STIPULATIONS
ATTACHED

*See Instructions On Reverse Side

RECEIVED

RECEIVED
O O B HOBBS
OFFICE

State of New Mexico
Energy, Minerals & Natural Resources Department

District I
PO Box 1980, Hobbs, NM 88241-1980
District II
PO Drawer DD, Artesia, NM 88211-0719
District III
1000 Rio Brazos Rd., Aztec, NM 87410
District IV
PO Box 2088, Santa Fe, NM 87504-2088

OIL CONSERVATION DIVISION
PO Box 2088
Santa Fe, NM 87504-2088

Form C-102
Revised February 21, 1994
Instructions on back
Submit to Appropriate District Office
State Lease - 4 Copies
Fee Lease - 3 Copies

☐ AMENDED REPORT

WELL LOCATION AND ACREAGE DEDICATION PLAT

¹ API Number 30-025-32853		² Pool Code 62965	³ Pool Name Warren Blinebry-Tubb
⁴ Property Code 3127 3127	⁵ Property Name WARREN UNIT Blinebry-Tubb		⁶ Well Number 118
⁷ OGRID No. 005073	⁸ Operator Name CONOCO INC.		⁹ Elevation 3516

¹⁰Surface Location

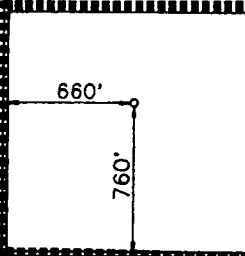
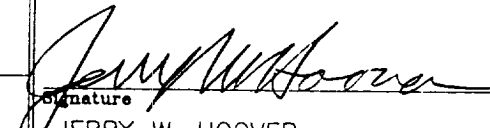
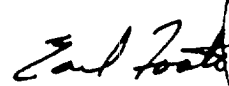
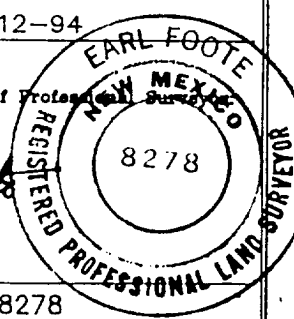
UL or lot no.	Section	Township	Range	Lot Idn	Feet from the	North/South line	Feet from the	East/West line	County
M	28	20-S	38-E		760	SOUTH	660	WEST	LEA

¹¹Bottom Hole Location If Different From Surface

UL or lot no.	Section	Township	Range	Lot Idn	Feet from the	North/South line	Feet from the	East/West line	County

¹² Dedicated Acres 40	¹³ Joint or Infill	¹⁴ Consolidation Code	¹⁵ Order No.
-------------------------------------	-------------------------------	----------------------------------	-------------------------

NO ALLOWABLE WILL BE ASSIGNED TO THIS COMPLETION UNTIL ALL INTERESTS HAVE BEEN CONSOLIDATED
OR A NON-STANDARD UNIT HAS BEEN APPROVED BY THE DIVISION

¹⁶ 					¹⁷ OPERATOR CERTIFICATION I hereby certify that the information contained herein is true and complete to the best of my knowledge and belief.  Signature JERRY W. HOOVER Printed Name SR. CONSERVATION COORDINATOR Title 1/9/95 Date
¹⁸ SURVEYOR CERTIFICATION I hereby certify that the well location shown on this plat was plotted from field notes of actual surveys made by me or under my supervision, and that the same is true and correct to best of my belief. 7-12-94 Date of Survey Signature and Seal of Professional Surveyor   Certificate Number 8278					

PROPOSED WELL PLAN OUTLINE

WELL NAME **WARREN UNIT NO.118**

LOCATION **760' FSL & 660' FWL SECT. 28 T-20S R-38E LEA CO.**

TVD IN 1000'	MD	FORMATION TOPS & TYPE	DRILLING PROBLEMS	TYPE OF FORMATION EVALUATION	HOLE SIZE	CASING SIZE DEPTH	FRAC GRAD	FORMATION PRESSURE GRADIENT	WT	MUD TYPE	DAYS
0			POSSIBLE HOLE ENLARGEMENT & SLOUGHING		12-1/4"				8.4	FRESH	
1		RUSTLER 1430'			7-7/8"	1500' 8-5/8" 24#, K-55 ST&C 920 xxx circ			10	BRINE	3
2		BASE SALT 2525'		2500' - TD							
		YATES 2730'									
3		7-RIVERS 2965'									5
		GRAYBURG 3575'									
4		SAN ANDRES 4040'		H2S MONITORS AT 4000'							
			POSSIBLE LOST CIRCULATION OR SEEPAGE. W.U.35 HAD STUCK PIPE DUE TO DIFFERENTIAL STICKING WHILE DRILLING THRU GLORIETTA					LESS THAN 8.3			8
5		GLORIETTA 5355'									
		BLINEBRY 5805'	POSSIBLE SEEPAGE FROM BLINEBRY - TD						9.2	BRINE STARCH	10
6		TUBB 6315'		GR-CAL-DDL-MSFL FROM 2500' - TD							
		DRINKARD 6605'		GR-CAL-FDC-CNL-PE FROM 2500' - TD							
7		TD 6975'		DI-Electric BRING GR-CAL TO SURFACE ON ONE SUITE		6975' 5 1/2" 15.5#, K-55, LT&C 1940 xxx, attempt to circ		LESS THAN 8.3			17
8											

DATE 4 January, 1995

APPROVED _____

DRILLING ENGINEER

DIVISION DRILLING SUPERVISOR

RECEIVED

**OCC ROBBE
OFFICE**

WELL NAME: Warren Unit No. 118

RECEIVED

JAN 23 11 47 AM '85

C E M E N T I N G P R O G R A M

SURFACE CASING STRING

LEAD 650 sxs Class C Mixed at 13.7 ppg
Additives 4 % Gel + 2 % CaCl2 + .2% SMS

TAIL 270 sxs Class C Mixed at 14.8 ppg
Additives 2 % CaCl

PRODUCTION CASING STRING

1st STAGE

LEAD 100 sxs Class C Mixed at 12.8 ppg
Additives 65:35:6 BJ Lite, .2 % SMS

TAIL 400 sxs Class C Mixed at 14.8 ppg
Additives 1 % BAIO, .2 % SMS, 1 % A-7

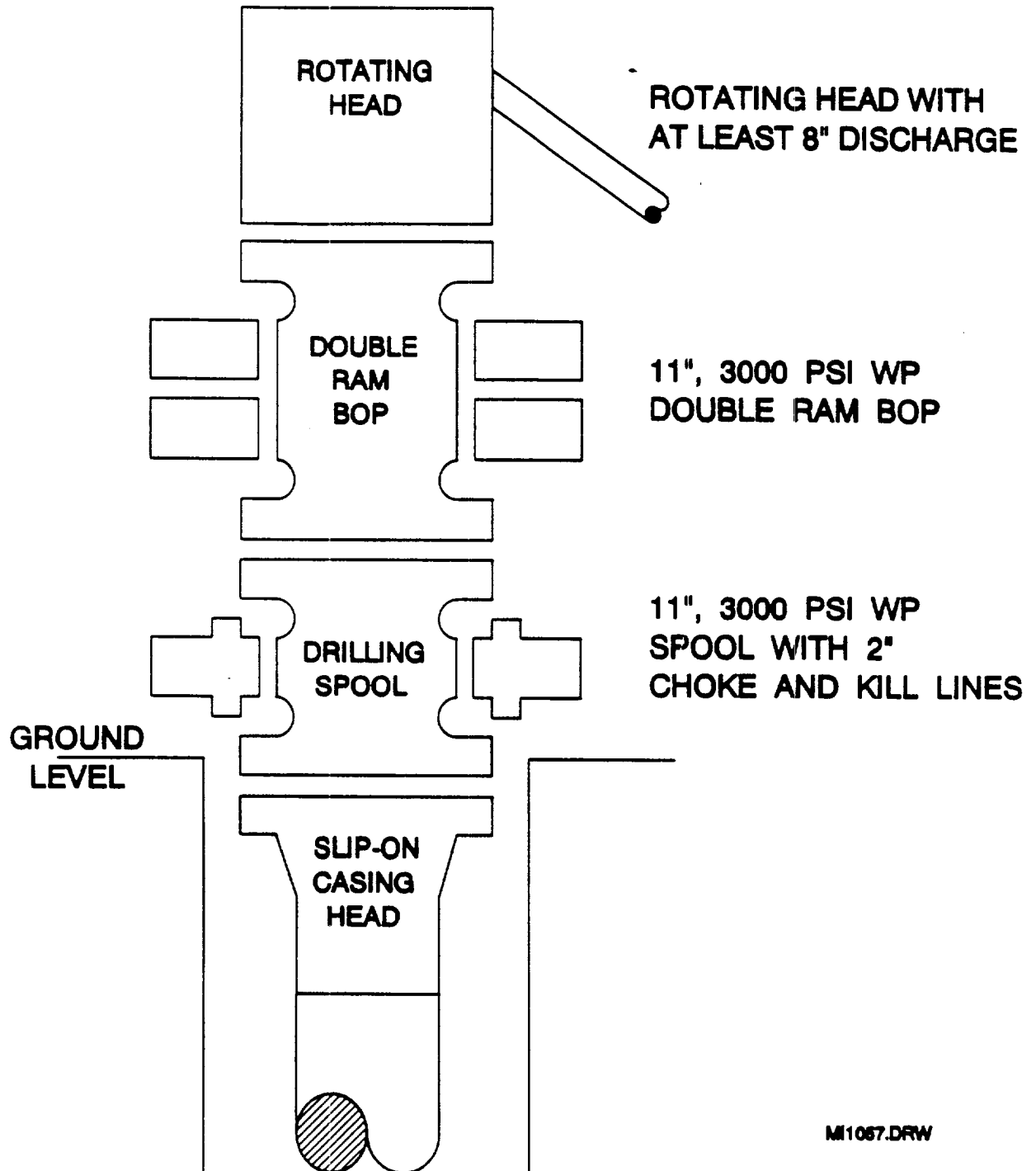
2nd STAGE

LEAD 690 sxs Class C Mixed at 12.8 ppg
Additives 65:35:6 BJ Lite, .2 % SMS

TAIL 750 sxs Class C Mixed at 14.8 ppg
Additives 1 % BAIO, .2 % SMS, 1 % A-7

ANTICIPATED BOTTOM HOLE PRESSURE: 2000 psi

BOP SPECIFICATIONS



M11067.DRW

8/22/95



RECEIVED