

DISTRICT I
P. O. Box 1980, Hobbs, NM 88240

DISTRICT II
P. O. Drawer DD, Artesia, NM 88210

DISTRICT III
1000 Rio Brazos Rd., Aztec, NM 87410

DISTRICT IV
P. O. Box 2088, Santa Fe, NM 87504-2088

State of New Mexico
Energy, Minerals and Natural Resources Department

OIL CONSERVATION DIVISION

PO Box 2088
Santa Fe, NM 87504-2088

Form C-102
Revised February 10, 1994

Instructions on back

Submit to Appropriate District Office

State Lease-4 copies

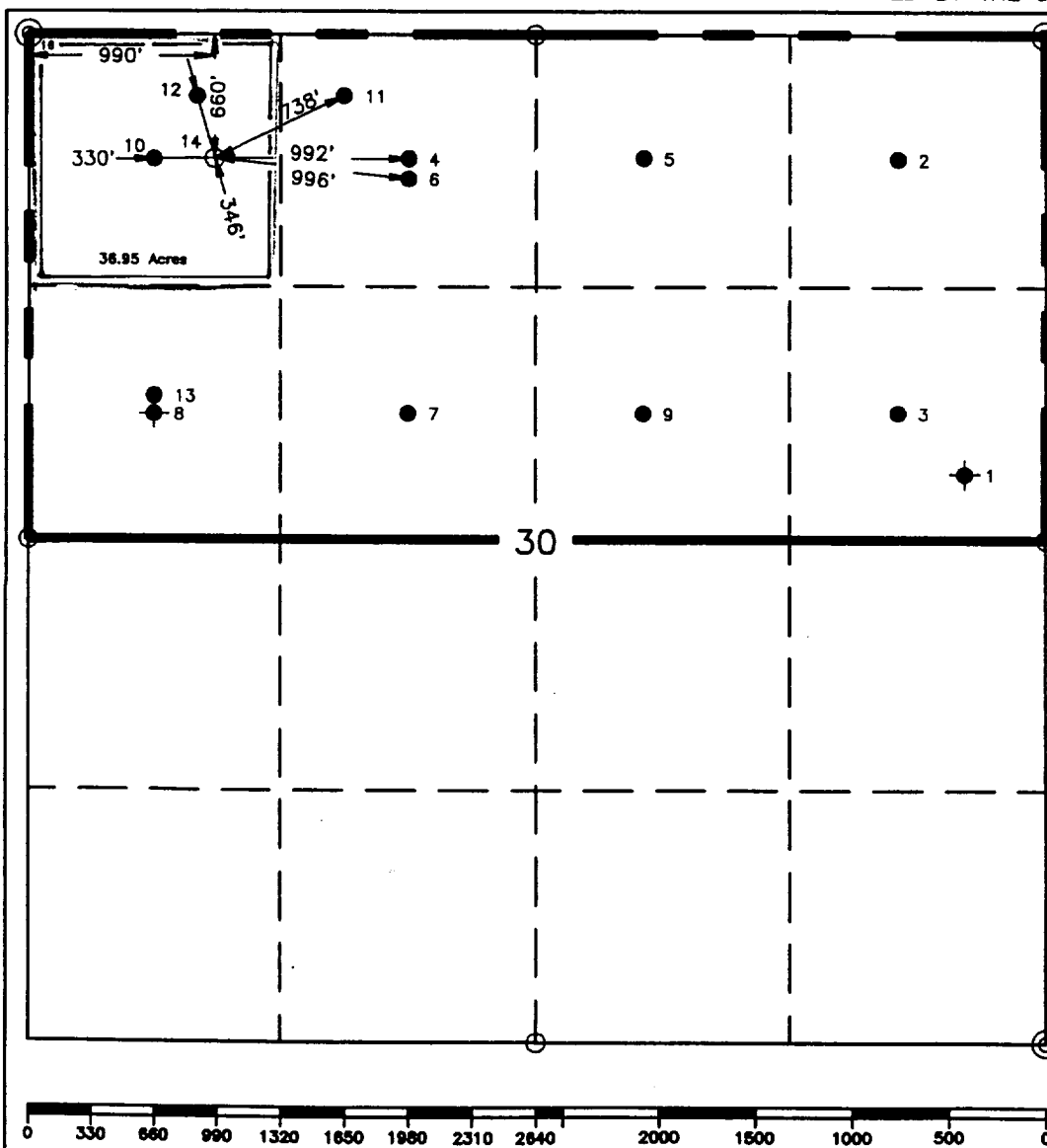
Fee Lease-3 copies

☐ AMENDED REPORT

WELL LOCATION AND ACREAGE DEDICATION PLAT

¹ API Number 30-025-33012		² Well Code 49210		³ Pool Name Paddock			
⁴ Property Code 10963		⁵ Property Name V. M. Henderson			⁶ Well Number 14		
⁷ OGRID No. 22351		⁸ Operator Name TEXACO EXPLORATION & PRODUCTION, INC.			⁹ Elevation 3498'		
¹⁰ Surface Location							
UL or lot no. D	Section 30	Township 21-S	Range 37-E	Lot Idn 660'	Feet from the North/South line North 990'	East/West line West	⁷ County Lea
¹¹ Bottom Hole Location If Different From Surface							
UL or lot no.	Section	Township	Range	Lot Idn	Feet from the	North/South line	⁷ County
¹² Dedicated Acres 36.95		¹³ Joint or Infill		¹⁴ Consolidation Code		¹⁵ Order No.	

NO ALLOWABLE WILL BE ASSIGNED TO THIS COMPLETION UNTIL ALL INTERESTS HAVE BEEN CONSOLIDATED
OR A NON-STANDARD UNIT HAS BEEN APPROVED BY THE DIVISION.



¹⁶OPERATOR CERTIFICATION

I hereby certify that the information contained herein is true and complete to the best of my knowledge and belief.

Signature

Printed Name

C. Wade Howard

Position

Engineer's Assistant

Company

Texaco Expl. & Prod. Inc.

Date

June 29, 1995

¹⁷SURVEYOR CERTIFICATION

I hereby certify that the well location shown on this plat was plotted from field notes of actual surveys made by me or under my supervision, and that the same is true and correct to the best of my knowledge and belief.

Date Surveyed

June 27, 1995

Signature & Seal of
Professional Surveyor

Certificate No.

7254 John S. Piper

Sheet

○ = Staked Location ● = Producing Well = Injection Well ◇ = Water Supply Well ◆ = Plugged & Abandon Well