

District I
PO Box 1980, Hobbs, NM 88241-1980
District II
PO Drawer DD, Artesia, NM 88211-0719
District III
1000 Rio Brazos Rd., Aztec, NM 87410
District IV
PO Box 2088, Santa Fe, NM 87504-2088

State of New Mexico
Energy, Minerals & Natural Resources Department

OIL CONSERVATION DIVISION
PO Box 2088
Santa Fe, NM 87504-2088

Form C-101
Revised February 21, 1994
Instructions on back
Submit to Appropriate District Office
State Lease - 6 Copies
Fee Lease - 5 Copies

☐ AMENDED REPORT

APPLICATION FOR PERMIT TO DRILL, RE-ENTER, DEEPEN, PLUGBACK, OR ADD A ZONE

¹ Operator Name and Address. CONOCO INC. 10 DESTA DRIVE STE 100W MIDLAND, TEXAS 79705		² OGRID Number 005073
⁴ Property Code 013396	³ Property Name Hardy 36 State	⁵ API Number 30-025-33622
		⁶ Well No. 18

⁷ Surface Location

UL or lot no.	Section	Township	Range	Lot Ida	Feet from the	North/South line	Feet from the	East/West line	County
A	36	20S	37E		330	North	330	East	Lea

⁸ Proposed Bottom Hole Location If Different From Surface

UL or lot no.	Section	Township	Range	Lot Ida	Feet from the	North/South line	Feet from the	East/West line	County
⁹ Proposed Pool 1 North Hardy Tubb-Drinkard					¹⁰ Proposed Pool 2				

¹¹ Work Type Code N	¹² Well Type Code O	¹³ Cable/Rotary R	¹⁴ Lease Type Code S	¹⁵ Ground Level Elevation 3504'
¹⁶ Multiple No	¹⁷ Proposed Depth 6990'	¹⁸ Formation Tubb-Drinkard	¹⁹ Contractor NA	²⁰ Spud Date 7/31/95

²¹ Proposed Casing and Cement Program

Hole Size	Casing Size	Casing weight/foot	Setting Depth	Sacks of Cement	Estimated TOC
12-1/4"	8-5/8"	24#	1500'	920	Surface
7-7/8"	5-1/2"	15.5#	6990'	1395	Surface

²² Describe the proposed program. If this application is to DEEPEN or PLUG BACK give the data on the present productive zone and proposed new productive zone. Describe the blowout prevention program, if any. Use additional sheets if necessary.

It is proposed to drill this well vertically through the Granite Wash formation according to the plan outlined in the following attachments:

1. Well Location & Acreage Dedication Plat (C-102)
2. Proposed Well Plan Outline
3. Cementing Program
4. BOP & Choke Manifold Specifications

Permit Expires 6 Months From Approval Date Unless Drilling Underway.

²³ I hereby certify that the information given above is true and complete to the best of my knowledge and belief. Signature: <i>Jerry W. Hoover</i> Printed Name: Jerry W. Hoover Title: Sr. Conservation Coordinator		OIL CONSERVATION DIVISION Approved by: ORIGINAL SIGNED BY JERRY SEXTON Title: DISTRICT I SUPERVISOR Approval Date: JUL 18 1995 Expiration Date: Conditions of Approval: Attached <input type="checkbox"/>	
Date: 7/14/95	Phone: 915-686-6548		

State of New Mexico
Energy, Minerals & Natural Resources Department

District I
PO Box 1980, Hobbs, NM 88241-1980
District II
PO Drawer DD, Artesia, NM 88211-0719
District III
1000 Rio Brazos Rd., Aztec, NM 87410
District IV
PO Box 2088, Santa Fe, NM 87504-2088

OIL CONSERVATION DIVISION
PO Box 2088
Santa Fe, NM 87504-2088

Form C-102
Revised February 21, 1994
Instructions on back
Submit to Appropriate District Office
State Lease - 4 Copies
Fee Lease - 3 Copies

☐ AMENDED REPORT

WELL LOCATION AND ACREAGE DEDICATION PLAT

¹ API Number 30-025- 330-27	² Pool Code 96350	³ Pool Name North Hardy Tubb-Drinkard
⁴ Property Code 013396	⁵ Property Name HARDY 36 STATE	⁶ Well Number 18
⁷ GRID No. 005073	⁸ Operator Name CONOCO INC.	⁹ Elevation 3504

¹⁰Surface Location

UL or lot no.	Section	Township	Range	Lot Idn	Feet from the	North/South line	Feet from the	East/West line	County
A	36	20-S	37-E		330	NORTH	330	EAST	LEA

¹¹Bottom Hole Location If Different From Surface

UL or lot no.	Section	Township	Range	Lot Idn	Feet from the	North/South line	Feet from the	East/West line	County

¹² Dedicated Acres 40	¹³ Joint or Infill	¹⁴ Consolidation Code	¹⁵ Order No.
-------------------------------------	-------------------------------	----------------------------------	-------------------------

NO ALLOWABLE WILL BE ASSIGNED TO THIS COMPLETION UNTIL ALL INTERESTS HAVE BEEN CONSOLIDATED
OR A NON-STANDARD UNIT HAS BEEN APPROVED BY THE DIVISION

18					¹⁷ OPERATOR CERTIFICATION
					I hereby certify that the information contained herein is true and complete to the best of my knowledge and belief.
					Signature Printed Name JERRY W. HOOVER Title SR. CONSERVATION COORDINATOR Date 7/14/95
					¹⁸ SURVEYOR CERTIFICATION
					I hereby certify that the well location shown on this plat was plotted from field notes of actual surveys made by me or under my supervision, and that the same is true and correct to best of my belief.
					Date of Survey JUNE 20, 1995 Signature and Seal of Professional Surveyor Certificate Number 8278

RECEIVED

JUL 17 1995

UCC HOBBS
OFFICE

PROPOSED WELL PLAN OUTLINE

WELL NAME **HARDY 36 STATE NO. 18**

LOCATION **330' FNL 330' FEL SECT. 36 T-20S R-37E LEA CO.**

TVD IN 1000'	MD	FORMATION TOPS & TYPE	DRILLING PROBLEMS	TYPE OF FORMATION EVALUATION	HOLE SIZE	CASING SIZE DEPTH	FRAC GRAD	FORMATION PRESSURE GRADIENT	MUD WT TYPE	DAYS
0			POSSIBLE HOLE ENLARGEMENT AND SLOUGHING		12-1/4"				8.4 FRESH	
1										
2		RUSTLER 1430'				8-5/8" 1500' 24# K-55, ST&C 920 sz, cl w cmt			10 BRINE	3
3		B/SALT 2550' YATES 2710'		2-MAN MUD LOGGERS ON AT 3500'						
4		7-RIVERS 2930' QUEEN 3530' PENROSE 3685' GRAYBURG 3830' SAN ANDRES 4060'		H2S MONITOR ON AT 4000'						
5			POSSIBLE LOST CIRCULATION AND SEEPAGE TO TOTAL DEPTH		7-7/8"			Less than 8.3		
6		GLORIETTA 5320' BLINEBRY 5790'	CASES OF DIFFERENTIAL STICKING THROUGH GLORIETTA						BRINE STARCH 10 - 10.2	
7		TUBB 6330' DRINKARD 6640' ABO 6950' TD 6990'		GR-CAL-DDL-MSFL 3500' - TD GR-CAL-FDC-CNL-PE 3500' - TD DI-Electric 2000' min		5 1/2" TD 6990' 15.5#, K-55, LT&C 1395 sz, cl w cmt		Less than 8.3 BHP = 2650 psi		17
8										
9										
10										
11										
12										
13										
14										
15										
16										

DATE JULY 13, 1995

APPROVED BILLY GOODWIN
DRILLING ENGINEER

Well Name: HARDY 36 STATE No. 18

CEMENTING PROGRAM

Surface Casing String:

LEAD 650 sxs Class C Mixed at 13.7 ppg
Additives 4% GEL, 2% CaCl₂, .2% SMS

TAIL 270 sxs Class C Mixed at 14.8 ppg
Additives 2% CaCl₂

Intermediate Casing String:

1st Stage

LEAD _____ sxs Class _____ Mixed at _____ ppg
Additives _____

TAIL _____ sxs Class _____ Mixed at _____ ppg
Additives _____
Percent free water _____ Water Loss _____ cc

2nd Stage

LEAD _____ sxs Class _____ Mixed at _____ ppg
Additives _____

TAIL _____ sxs Class _____ Mixed at _____ ppg
Additives _____
Percent free water _____ Water Loss _____ cc

Production Casing String:

1st Stage

LEAD 685 sxs Class C Mixed at 12.1 ppg
Additives 2.5% SMS

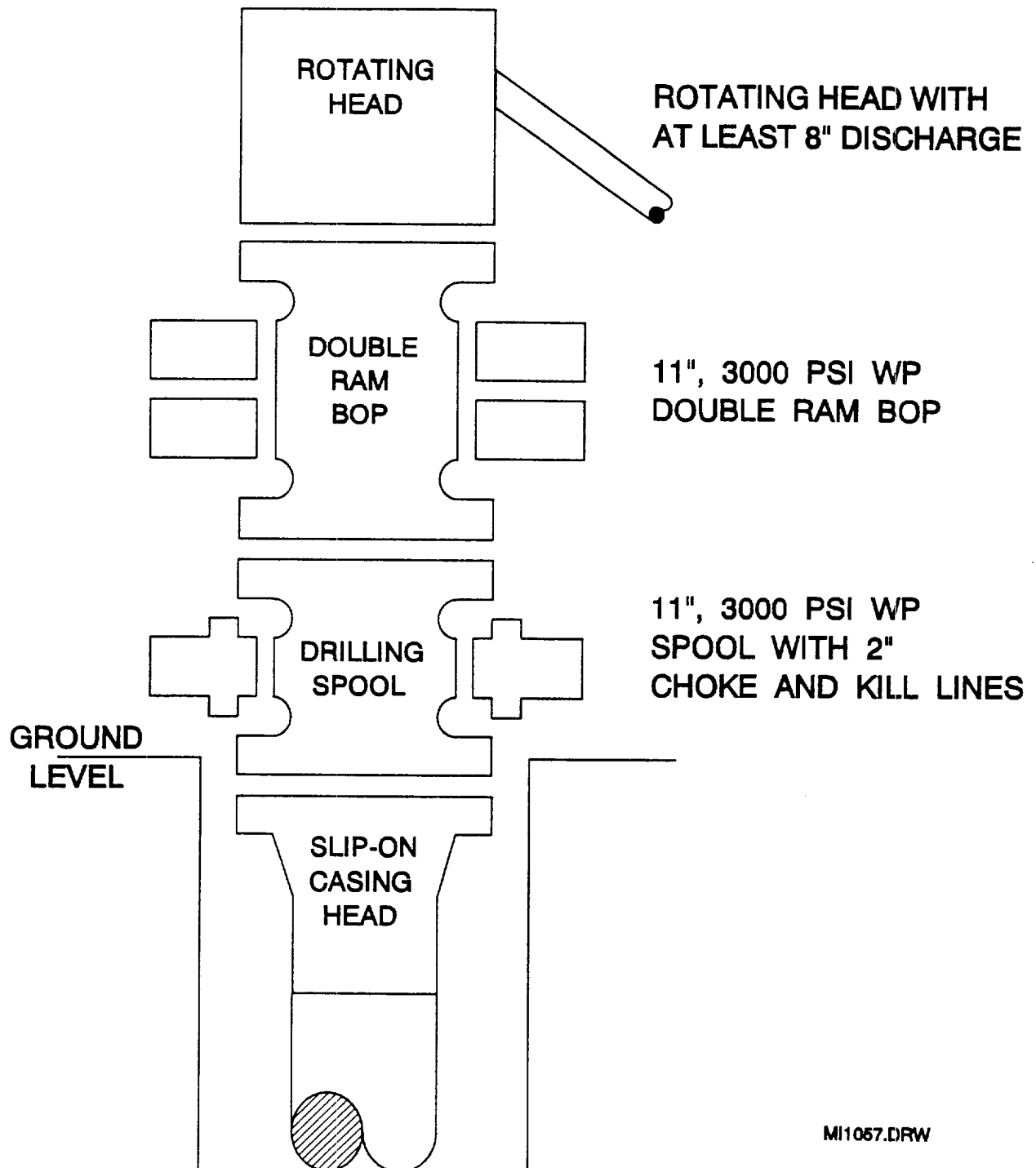
TAIL 710 sxs Class C Mixed at 14.8 ppg
Additives 1.1% FL-62 + 2% BA-90 + 3% A-5 + .3% CD-32 + .2% SMS
Percent free water 0 Water Loss 51 cc

2nd Stage

LEAD _____ sxs Class _____ Mixed at _____ ppg
Additives _____

TAIL _____ sxs Class _____ Mixed at _____ ppg
Additives _____
Percent free water _____ Water Loss _____ cc

BOP SPECIFICATIONS

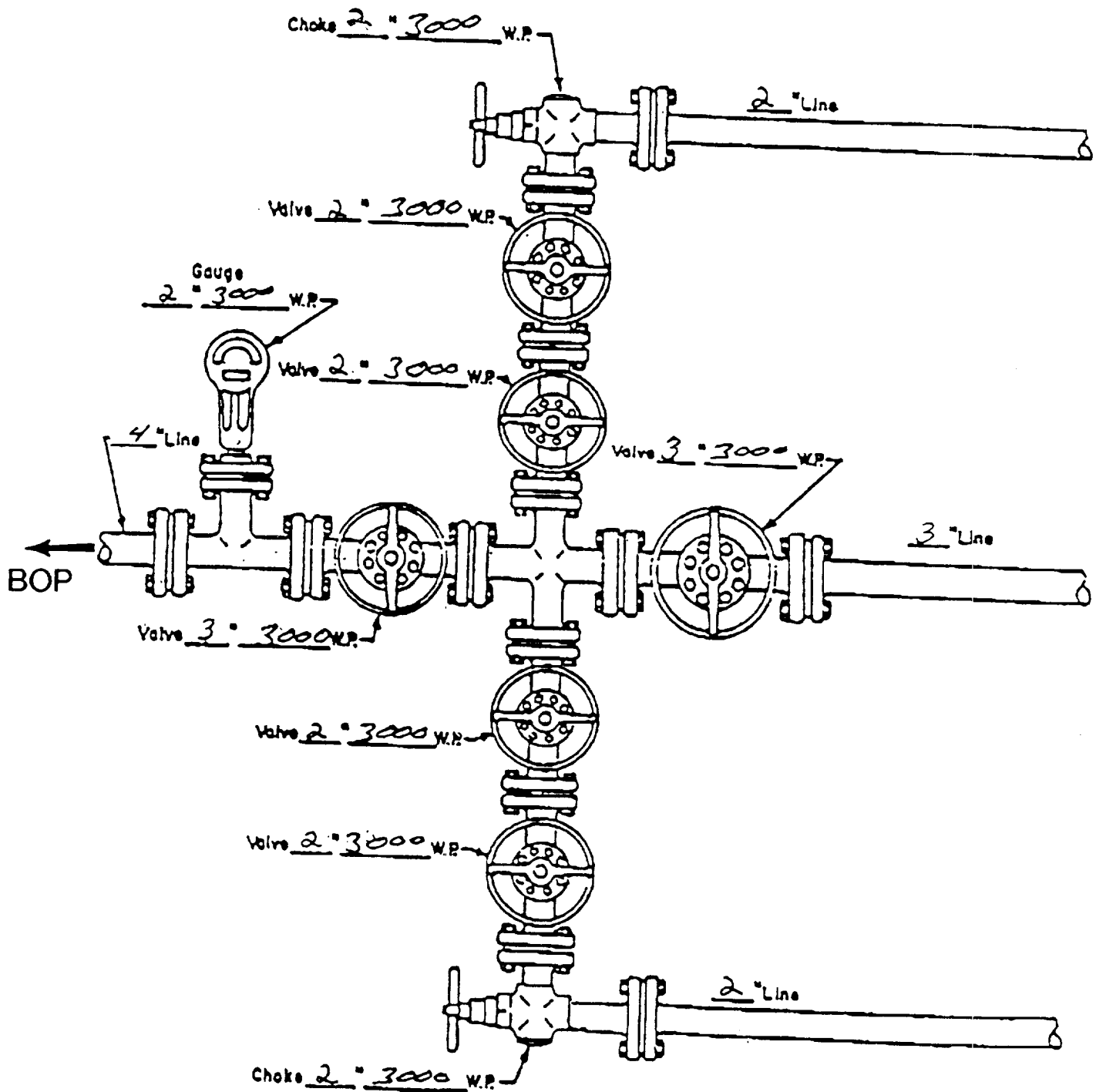


RECEIVED

JUL 17 1990

**U C D HOBBS
OFFICE**

CHOKE MANIFOLD DIAGRAM



MANIFOLD
3000 #W.P.

- ☒ Manual
- ☐ Hydraulic