

N.M. OIL OPER. OGRID NO. 5073
O. BOX PROPERTY NO. 312
UNITED STATES DEPARTMENT OF POOL CODE 62965
BUREAU OF LAND EFF. DATE 9/14/95
APPLICATION FOR PERMIT TO DRILLING NO. 3D-025-33099

N.M. Roswell District
Modified Form No.
NMO60-3160-2

1A. TYPE OF WORK
DRILL ☒ DEEPEN ☐ PLUG BACK ☐

B. TYPE OF WELL
OIL WELL ☒ GAS WELL ☐ OTHER ☐ SINGLE ZONE ☒ MULTIPLE ZONE ☐

2. NAME OF OPERATOR
Conoco, Inc.

3a. Area Code & Phone No.
(915) 686-6548

3. ADDRESS OF OPERATOR
10 Desta Dr. Ste 100W, Midland, TX 79705

4. LOCATION OF WELL (Report location clearly and in accordance with any State requirements.)
At surface 660' FNL & 1980' FWL
At proposed prod. zone 660' FNL & 1980' FWL

14. DISTANCE IN MILES AND DIRECTION FROM NEAREST TOWN OR POST OFFICE*

15. DISTANCE FROM PROPOSED* LOCATION TO NEAREST PROPERTY OR LEASE LINE, FT. (Also to nearest drg. unit line, if any)

16. NO. OF ACRES IN LEASE

17. NO. OF ACRES ASSIGNED TO THIS WELL
40

18. DISTANCE FROM PROPOSED* LOCATION TO NEAREST WELL, DRILLING COMPLETED, OR APPLIED FOR, ON THIS LEASE, FT.

19. PROPOSED DEPTH
6925'

20. ROTARY OR CABLE TOOLS
Rotary

21. ELEVATIONS (Show whether DP, RT, GR, etc.)
3549'

22. APPROX. DATE WORK WILL START*
9/11/95

3. LEASE DESIGNATION AND SERIAL NO.
LC 031670B

6. IF INDIAN, ALLOTTEE OR TRIBE NAME

7. UNIT AGREEMENT NAME
Warren Unit Blinebry-Tubb

8. FARM OR LEASE NAME

9. WELL NO.
123

10. FIELD AND POOL OR WILDCAT
Warren Blinebry-Tubb

11. SEC., T., R., M., OR S.E. AND SURVEY OR AREA
Sec. 27, T-20S, R-38E

12. COUNTY OR PARISH
Lea

13. STATE
NM

PROPOSED CASING AND CEMENTING PROGRAM

HOLE SIZE	CASING SIZE	WEIGHT/FOOT	GRADE	THREAD TYPE	SETTING DEPTH	QUANTITY OF CEMENT
12-1/4"	8-5/8"	24#	K-55	ST&C	1500'	900 sx/circ.
7-7/8"	5-1/2"	15.5#	K-55	LT&C	6925'	1380 sx/circ.

It is proposed to drill this well according to the drilling plan submitted in the following attachments:

1. Well Location and Acreage Dedication Plat (C-102)
2. Proposed Well Plan Outline
3. Cementing Program
4. Surface Use Plan
5. EXHIBIT A: Vicinity and Lease Road Maps
6. EXHIBIT B: 7.5" Quadrangle Topo Map
7. EXHIBIT C.1 - C.7: Road, Pipeline, and Electric line plats
8. EXHIBIT D: Trailer-mounted Rig Layout
10. BOP and Choke Manifold Specifications
11. H2S Drilling Operations Plan
12. Letter verifying negotiations with surface land owner
13. Archeological survey has been ordered & will be filed as soon as completed.



IN ABOVE SPACE DESCRIBE PROPOSED PROGRAM: If proposal is to deepen or plug back, give data on present productive zone and proposed new productive zone. If proposal is to drill or deepen directionally, give pertinent data on subsurface locations and measured and true vertical depths. Give blowout preventer program, if any.

24. SIGNED James M. Hoover TITLE Sr. Conservation Coordinator DATE 8/7/95
(This space for Federal or State office use)

PERMIT NO. _____ APPROVAL DATE _____
APPROVED BY IS/THOMAS J. GURRILL TITLE Acting Area Manager DATE SEP 07 1995
CONDITIONS OF APPROVAL, IF ANY:

APPROVAL SUBJECT TO
GENERAL REQUIREMENTS AND
SPECIAL STIPULATIONS
ATTACHED

*See Instructions On Reverse Side

RECEIVED
SEP 11 1995
JCD HOBBS
OFFICE

District I
PO Box 1980, Hobbs, NM 88241-1980
District II
PO Drawer DD, Artesia, NM 88211-0719
District III
1000 Rio Brazos Rd., Aztec, NM 87410
District IV
PO Box 2088, Santa Fe, NM 87504-2088

State of New Mexico
Energy, Minerals & Natural Resources Department

OIL CONSERVATION DIVISION
PO Box 2088
Santa Fe, NM 87504-2088

Form C-1
Revised February 21, 1991
Instructions on back
Submit to Appropriate District Office
State Lease - 4 Copies
Fee Lease - 3 Copies

☐ AMENDED REPORT

WELL LOCATION AND ACREAGE DEDICATION PLAT

'API Number 30-025- 33089	'Pool Code 62965	'Pool Name Warren Blinebry-Tubb
'Property Code 003127	'Property Name WARREN UNIT Blinebry-Tubb WF	'Well Number 123
'OGRD No. 005073	'Operator Name CONOCO, INC.	'Elevation 3549'

¹⁰ Surface Location

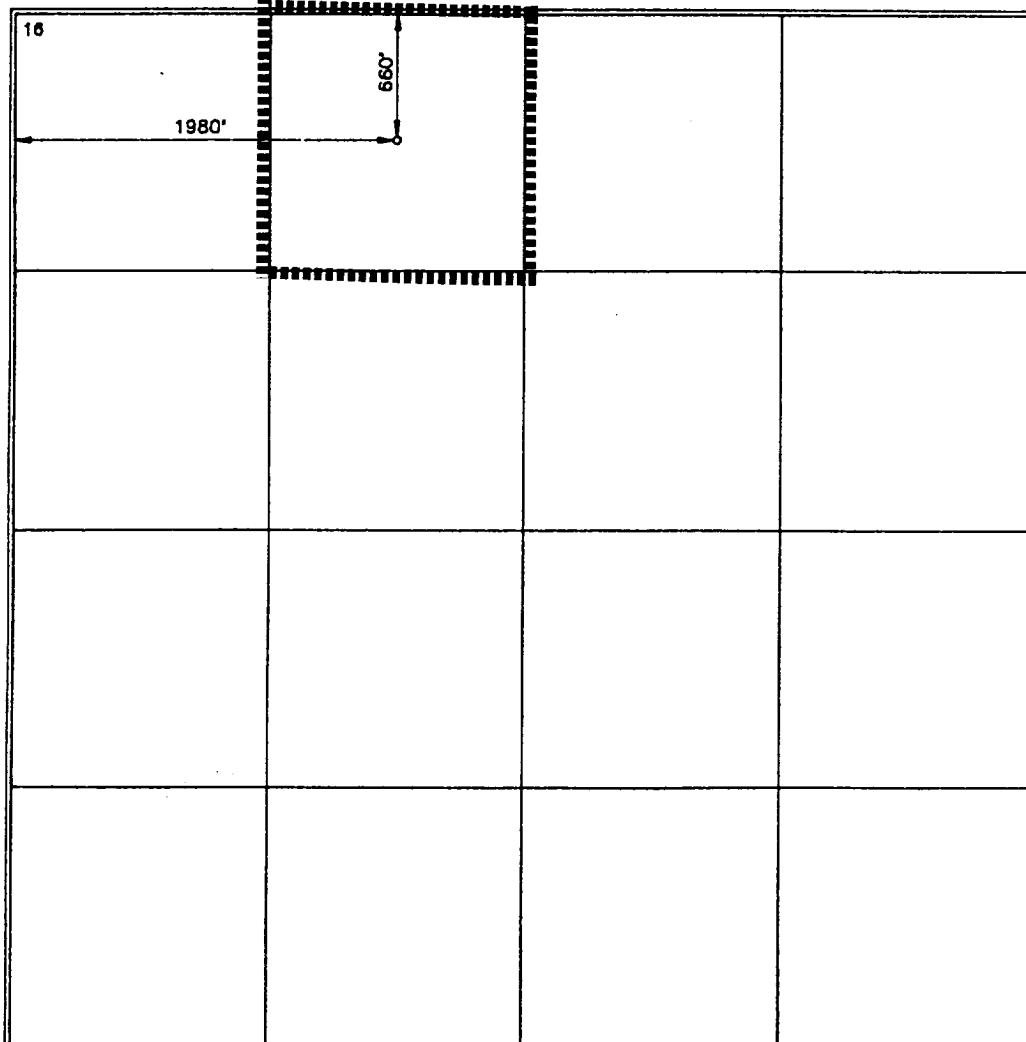
UL or lot no.	Section	Township	Range	Lot Idn	Feet from the	North/South line	Feet from the	East/West line	County
C	27	20-S	38-E		660	NORTH	1980	WEST	LEA

¹¹ Bottom Hole Location If Different From Surface

UL or lot no.	Section	Township	Range	Lot Idn	Feet from the	North/South line	Feet from the	East/West line	County

'Dedicated Acres 40	'Joint or Infill	'Consolidation Code	'Order No.
------------------------	------------------	---------------------	------------

NO ALLOWABLE WILL BE ASSIGNED TO THIS COMPLETION UNTIL ALL INTERESTS HAVE BEEN CONSOLIDATED
OR A NON-STANDARD UNIT HAS BEEN APPROVED BY THE DIVISION



¹⁷ OPERATOR CERTIFICATION

I hereby certify that the information contained herein is true and complete to the best of my knowledge and belief.

Jerry W. Hoover
Signature

JERRY W. HOOVER

Printed Name

SR. CONSERVATION COORDINATOR

Title

8/7/95

Date

¹⁸ SURVEYOR CERTIFICATION

I hereby certify that the well location shown on this plat was plotted from field notes of actual surveys made by me or under my supervision, and that the same is true and correct to best of my belief.

APR 1995

Date of Survey

Signature and

of Professional Surveyor

8278

Certificate Number

8278

RECEIVED
SEP 11 1965
UCD MODEL
OFFICE

PROPOSED WELL PLAN OUTLINE

WELL NAME **WARREN UNIT NO. 123**

LOCATION **660' FNL & 1980' FWL SECT. 27 T-20S R-38E LEA CO.**

TVD IN 1000'	MO	FORMATION TOPS & TYPE	DRILLING PROBLEMS	TYPE OF FORMATION EVALUATION	HOLE SIZE	CASING SIZE DEPTH	FRAC GRAD	FORMATION PRESSURE GRADIENT	WT	MUD TYPE	DAYS
0			POSSIBLE HOLE ENLARGEMENT & SLOUGHING		12-1/4"				8.4	FRESH	
1		RUSTLER 1430'			7-7/8"	8-5/8" 1500' 24#, K-55, ST&C 920 sz, c/s cmt			10	BRINE	3
2		BASE SALT 2525'		2-man mudloggers 2500' - TD							
3		YATES 2825'									
4		7-RIVERS 3098'									5
5		QUEEN 3669'									
6		PENROSE 3805'									
7		GRAYBURG 3990'									
8		SAN ANDRES 4220'		H2S MONITORS AT 4000'				LESS THAN 8.3			
9			POSSIBLE LOST CIRCULATION OR SEEPAGE. W.U. 35 HAD STUCK PIPE DUE TO DIFFERENTIAL STICKING WHILE DRILLING THRU GLORIETTA								6
10		GLORIETTA 5524'							10.1	BRINE STARCH	
11		BLINEBRY 5985'	POSSIBLE SEEPAGE FROM BLINEBRY - TD								10
12		TUBB 6467'		GR-CAL-DDL-MSFL FROM 2500' - TD							
13		DRINKARD 6756'		GR-CAL-FDC-CNL-PE FROM 2500' - TD				LESS THAN 8.3			17
14		ABO 7040'		DI-Electric BRING GR-CAL TO SURFACE ON ONE SUITE		5-1/2" 6925' 15.5#, K-55, LT&C 1380 sz, c/s cmt (Cover Blinebry w/Tail)		BHP = 2100 psi			
15		TD 6925'									

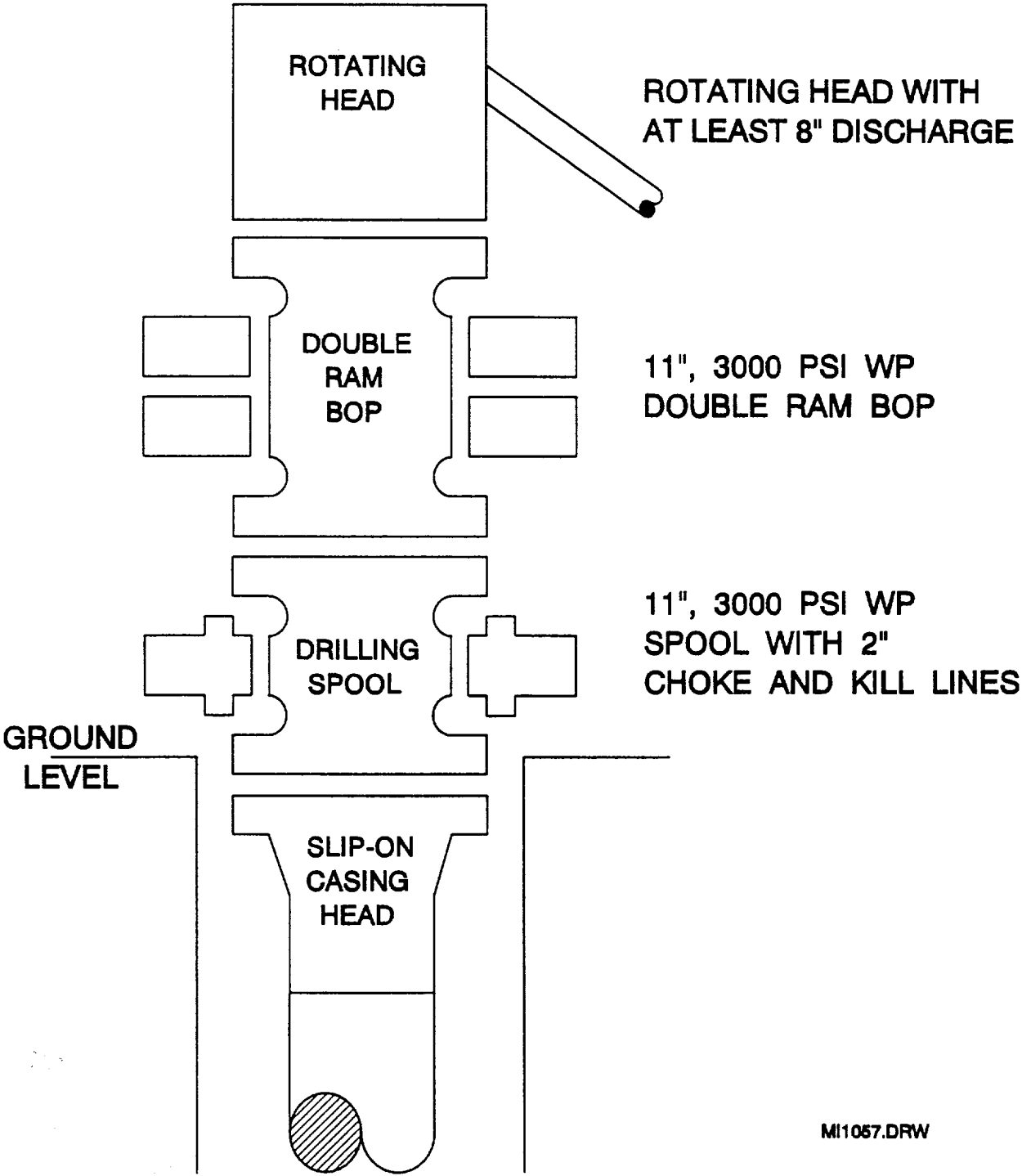
DATE July 12, 1995

APPROVED BILLY GOODWIN

DRILLING ENGINEER

RECEIVED
JUN 14 1995
JUN 14 1995

BOP SPECIFICATIONS



[Handwritten signature]

RECEIVED
SEP 11 1995
JOE HOBBS
OFFICE