

UNITED STATES  
DEPARTMENT OF THE INTERIOR  
BUREAU OF LAND MANAGEMENT

BLM. O&A  
P.O. BOX  
SUBMIT IN DUPLICATE  
HOODS, (Other instructions on reverse side)

FORM APPROVED  
OMB NO. 1004-0136  
Expires: February 28, 1995

APPLICATION FOR PERMIT TO DRILL OR DEEPEN

|   |                                |   |
|---|--------------------------------|---|
| 1a. TYPE OF WORK<br>DRILL <input checked="" type="checkbox"/> DEEPEN <input type="checkbox"/>   |                                | 5. LEASE DESIGNATION AND SERIAL NO.<br>NM-2379                                  |
| b. TYPE OF WELL<br>OIL WELL <input checked="" type="checkbox"/> GAS WELL <input type="checkbox"/> OTHER <input type="checkbox"/> SINGLE ZONE <input checked="" type="checkbox"/> MULTIPLE ZONE <input type="checkbox"/> |                                | 6. IF INDIAN, ALLOTTEE OR TRIBE NAME  |
| 2. NAME OF OPERATOR<br>POGO PRODUCING COMPANY   |                                | 7. UNIT AGREEMENT NAME  |
| 3. ADDRESS AND TELEPHONE NO.<br>P.O. BOX 10340, MIDLAND, TEXAS 79702 (915-682-6822)   |                                | 8. FARM OR LEASE NAME, WELL NO.<br>COVINGTON "A" FEDERAL #13                    |
| 4. LOCATION OF WELL (Report location clearly and in accordance with any State requirements.)<br>At surface 2310' FSL AND 1980' FEL OF SECTION 25<br>At proposed prod. zone Unit J                                       |                                | 9. API WELL NO.   |
| 14. DISTANCE IN MILES AND DIRECTION FROM NEAREST TOWN OR POST OFFICE*<br>29 MILES WEST OF EUNICE, NEW MEXICO  |                                | 10. FIELD AND POOL, OR WILDCAT UNDES.<br>RED TANK BONE SPRINGS                  |
| 15. DISTANCE FROM PROPOSED* LOCATION TO NEAREST PROPERTY OR LEASE LINE, FT. (Also to nearest drlg. unit line, if any) 1980'   | 16. NO. OF ACRES IN LEASE 1280 | 11. SEC., T., R., M., OR BLK. AND SURVEY OR AREA<br>SEC. 25, T. 22 S., R. 32 E. |
| 18. DISTANCE FROM PROPOSED LOCATION* TO NEAREST WELL, DRILLING, COMPLETED, OR APPLIED FOR, ON THIS LEASE, FT. 990'  | 19. PROPOSED DEPTH 10,200'     | 12. COUNTY OR PARISH 13. STATE<br>LEA COUNTY NEW MEXICO                         |
| 21. ELEVATIONS (Show whether DF, RT, GR, etc.)<br>3759' GR  |                                | 20. ROTARY OR CABLE TOOLS<br>ROTARY   |
| 22. APPROX. DATE WORK WILL START*<br>UPON APPROVAL  |                                |   |

| 23. PROPOSED CASING AND CEMENTING PROGRAM |                       |                 |               |                              |
|---|-----------------------|-----------------|---------------|------------------------------|
| SIZE OF HOLE                              | GRADE, SIZE OF CASING | WEIGHT PER FOOT | SETTING DEPTH | QUANTITY OF CEMENT           |
| 17-1/2"                                   | 13-3/8"               | 54.5#           | 800'          | SUFFICIENT TO CIRCULATE      |
| 11"                                       | 8-5/8"                | 32#             | 4600'         | SUFFICIENT TO CIRCULATE      |
| 7-7/8"                                    | 5-1/2"                | 17#             | 10,200'       | TO TIE BACK 200' INTO 8-5/8" |

AFTER SETTING PRODUCTION CASING, PAY ZONE WILL BE PERFORATED AND STIMULATED AS NECESSARY.

SEE ATTACHED FOR: SUPPLEMENTAL DRILLING DATA

OPER. OGRID NO. 17891  
PROPERTY NO. 9316  
POOL CODE 51683  
EFF. DATE 10/10/95  
API NO. 30-025-33142

BOP SKETCH  
SURFACE USE AND OPERATIONS PLAN  
HYDROGEN SULFIDE DRILLING OPERATIONS PLAN

IN ABOVE SPACE DESCRIBE PROPOSED PROGRAM: If proposal is to deepen, give data on present productive zone and proposed new productive zone. If proposal is to drill or deepen directionally, give pertinent data on subsurface locations and measured and true vertical depths. Give blowout preventer program, if any.

24. SIGNED Richard L. Wright TITLE Division Operations Mgr. DATE September 7, 1995  
(This space for Federal or State office use)

APPROVAL SUBJECT TO  
GENERAL REQUIREMENTS AND  
SPECIAL STIPULATIONS  
ATTACHED

PERMIT NO. \_\_\_\_\_ APPROVAL DATE \_\_\_\_\_  
Application approval does not warrant or certify that the applicant holds legal or equitable title to those rights in the subject lease which would entitle the applicant to conduct operations thereon.  
CONDITIONS OF APPROVAL, IF ANY:  
APPROVED BY James H. [Signature] TITLE \_\_\_\_\_ DATE OCT 10 1995

\*See Instructions On Reverse Side

DISTRICT I  
P.O. Box 1980, Hobbs, NM 88240

DISTRICT II  
P.O. Drawer DD, Artesia, NM 88210

DISTRICT III  
1000 Rio Brazos Rd., Artec, NM 87410

DISTRICT IV  
PO BOX 2088, SANTA FE, NM 87504-2088

State of New Mexico  
Energy, Minerals and Natural Resources Department

Form C-102  
Revised February 10, 1994  
Instruction on back  
Submit to Appropriate District Office  
State Lease - 4 Copies  
Fee Lease - 3 Copies

OIL CONSERVATION DIVISION

P.O. Box 2088  
Santa Fe, New Mexico 87504-2088

☐ AMENDED REPORT

WELL LOCATION AND ACREAGE DEDICATION PLAT

|                                   |  |  |
|-----------------------------------|--|--|
| API Number<br><b>30-025-33142</b> | Pool Code<br><b>51683</b>                      | Pool Name<br><b>UNDES. RED TANK BONE SPRINGS</b> |
| Property Code<br><b>009316</b>    | Property Name<br><b>COVINGTON "A" FEDERAL</b>  | Well Number<br><b>13</b>                         |
| OGRID No.<br><b>17891</b>         | Operator Name<br><b>POGO PRODUCING COMPANY</b> | Elevation<br><b>3759</b>                         |

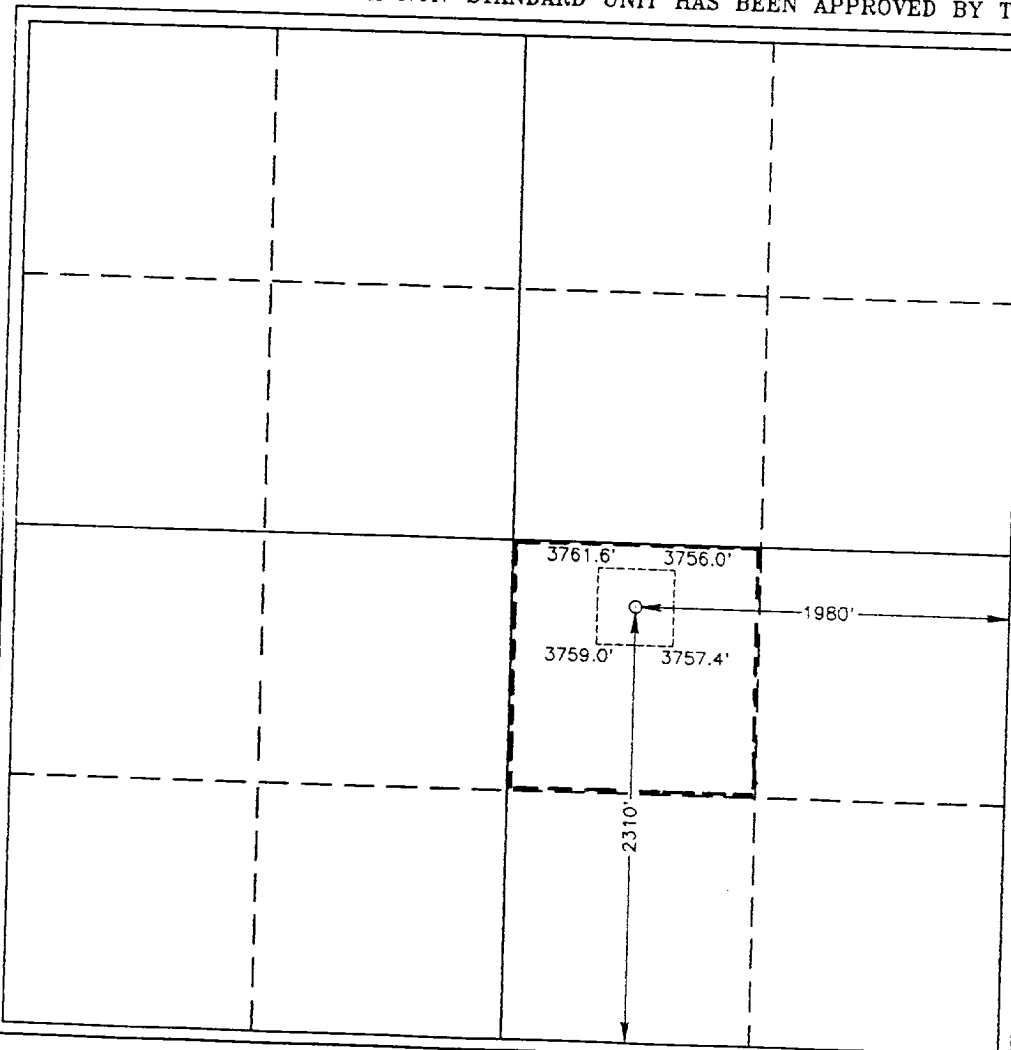
Surface Location

|                           |                      |                         |                      |         |                              |                                  |                              |                               |                      |
|---------------------------|----------------------|-------------------------|----------------------|---------|------------------------------|----------------------------------|------------------------------|-------------------------------|----------------------|
| UL or lot No.<br><b>J</b> | Section<br><b>25</b> | Township<br><b>22 S</b> | Range<br><b>32 E</b> | Lot Idn | Feet from the<br><b>2310</b> | North/South line<br><b>SOUTH</b> | Feet from the<br><b>1980</b> | East/West line<br><b>EAST</b> | County<br><b>LEA</b> |
|---------------------------|----------------------|-------------------------|----------------------|---------|------------------------------|----------------------------------|------------------------------|-------------------------------|----------------------|

Bottom Hole Location If Different From Surface

|                              |                             |                    |           |         |               |                  |               |                |        |
|------------------------------|-----------------------------|--------------------|-----------|---------|---------------|------------------|---------------|----------------|--------|
| UL or lot No.                | Section                     | Township           | Range     | Lot Idn | Feet from the | North/South line | Feet from the | East/West line | County |
| Dedicated Acres<br><b>40</b> | Joint or Infill<br><b>N</b> | Consolidation Code | Order No. |         |               |                  |               |                |        |

NO ALLOWABLE WILL BE ASSIGNED TO THIS COMPLETION UNTIL ALL INTERESTS HAVE BEEN CONSOLIDATED  
OR A NON-STANDARD UNIT HAS BEEN APPROVED BY THE DIVISION



OPERATOR CERTIFICATION

I hereby certify the the information  
contained herein is true and complete to the  
best of my knowledge and belief.

*Richard L. Wright*  
Signature

**Richard L. Wright**  
Printed Name

**Division Operations Mgr.**  
Title

**August 31, 1995**  
Date

SURVEYOR CERTIFICATION

I hereby certify that the well location shown  
on this plat was plotted from field notes of  
actual surveys made by me or under my  
supervision, and that the same is true and  
correct to the best of my belief.

**July 17, 1995**  
Date Surveyed

*Ronald J. Eidson*  
Signature & Seal of  
Professional Surveyor

**7-2795**  
Num. 95-1122

**RONALD J. EIDSON**  
Certificate No. 1122

**GARY EIDSON**  
7-2795

**WEST**  
676

**RONALD J. EIDSON**  
3239

**GARY EIDSON**  
12641

SUPPLEMENTAL DRILLING DATA  
POGO PRODUCING COMPANY  
COVINGTON "A" FEDERAL WELL NO.13

1. SURFACE FORMATION: Quaternary.

2. ESTIMATED TOPS OF GEOLOGIC MARKERS:

|               |       |
|---------------|-------|
| Anhydrite     | 850'  |
| Delaware Lime | 4800' |
| Cherry Canyon | 6100' |
| Brushy Canyon | 7400' |
| Bone Springs  | 8800' |

3. ANTICIPATED POSSIBLE HYDROCARBON BEARING ZONES:

|              |     |
|--------------|-----|
| Delaware     | Oil |
| Bone Springs | Oil |

4. PROPOSED CASING AND CEMENTING PROGRAM:

| CASING SIZE | SETTING DEPTH |         | WEIGHT | GRADE | JOINT |
|-------------|---------------|---------|--------|-------|-------|
|             | FROM          | TO      |        |       |       |
| 13-3/8"     | 0             | 800'    | 54.5#  | J-55  | STC   |
| 8-5/8"      | 0             | 4300'   | 32#    | J-55  | STC   |
| "           | 4300'         | 4600'   | 32#    | S-80  | STC   |
| 5-1/2"      | 0             | 1000'   | 17#    | N-80  | LTC   |
| "           | 1000'         | 7000'   | 17#    | J-55  | LTC   |
| "           | 7000'         | 10,200' | 17#    | N-80  | LTC   |

MINIMUM

DESIGN FACTORS: COLLAPSE 1.1 BURST 1.1 TENSION 1.2

13-3/8" casing to be cemented with 500 sacks of light cement tailed in with 200 sacks of Class "C" with 2% CaCl. Cement to circulate.

8-5/8" casing to be cemented with 1200 sacks of light cement with 10% salt tailed in with 200 sacks of premium cement with 1% CaCl. Cement to circulate.

5-1/2" production casing is to be cemented with approximately 700 sacks

of light cement followed by 400 sacks of premium cement. Cement to tie back 200 feet into the 8-5/8" casing.

If, during drilling operations, need for stage cementing of casing is indicated, staging tool(s) will be run and positioned to best suit hole conditions at time casing is run.

Cement volumes may be adjusted and cement may have lost circulation and/or other additives depending on hole conditions at the time casing is run.

5. PRESSURE CONTROL EQUIPMENT:

Blowout prevention equipment, while drilling the 11" hole, will be either a 3000 psi working pressure double ram type preventer or a 3000 psi working pressure annular type preventer.

Blow out prevention equipment, while drilling below the 8-5/8" casing seat, will be a 3000 psi working pressure BOP stack. A BOP sketch is attached.

6. CIRCULATING MEDIUM:

Surface to 800 feet: Fresh water base fluid with gel and paper sweeps for hole cleaning.  
Mud wgt 8.4 ppg - 8.6 ppg  
Viscosity 28 - 32 seconds per quart.

800 feet to 4600 feet: Brine water base fluid with salt gel and paper sweeps for hole cleaning.  
Mud wgt 10.0 ppg - 10.2 ppg  
Viscosity 28 - 32 seconds per quart.

4600 feet to T.D.: Fresh water base fluid with gel and paper sweeps for hole cleaning.  
Mud wgt 8.4 ppg - 8.6 ppg  
Viscosity 28 - 32 seconds per quart.

7. AUXILIARY EQUIPMENT:

A mud logging trailer will be in use while drilling below the interdediate casing.



8. TESTING, LOGGING, AND CORING PROGRAM:

Drill stem tests will be made when well data indicate a test is warranted.

It is planned that electric logs will include GR-CNL-Density logs and GR-DLL logs.

No coring is planned.

9. ABNORMAL PRESSURES, TEMPERATURES, OR HYDROGEN SULFIDE GAS:

No abnormal pressures or temperatures are expected.

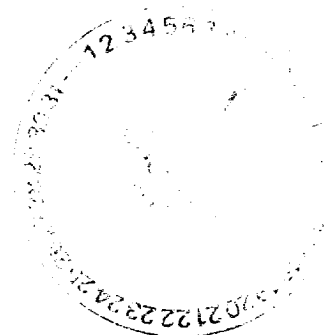
Expected bottom hole pressure is about 3900 psi.

Expected bottom hole temperature is about 135 degrees Fahr.

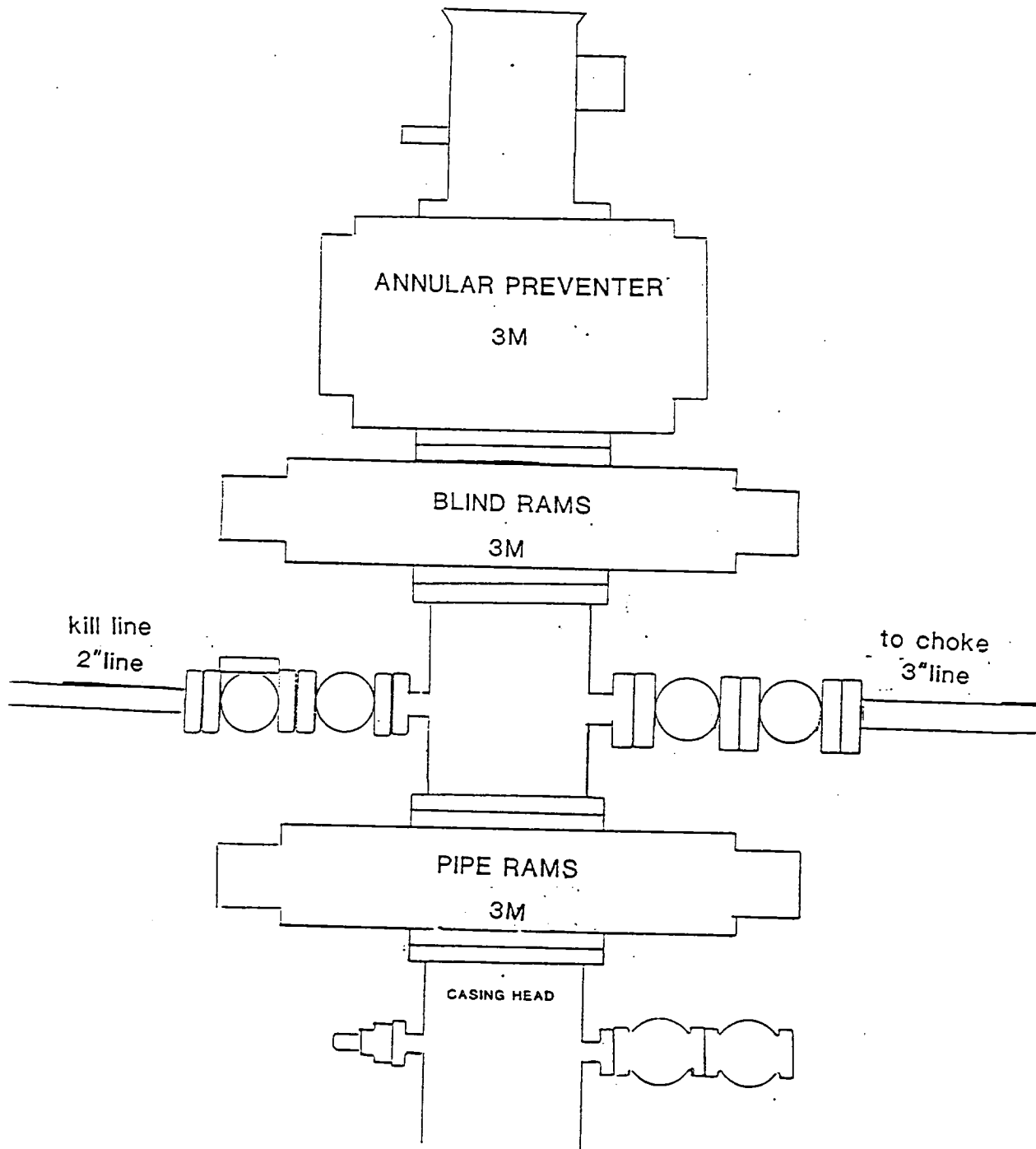
No hydrogen sulfide gas is expected. The production stream of Pogo Producing Company's wells in this area have been tested specifically for hydrogen sulfide gas and test results were negative. However, since it is possible that low-volume hydrogen sulfide gas may be present in permeable water zones of the Castile formation, drilling operations below the surface casing will be in accordance with the attached "HYDROGEN SULFIDE DRILLING OPERATIONS PLAN" until intermediate casing is set and cemented and this possible source of hydrogen sulfide gas is cased off.

10. ANTICIPATED STARTING DATE:

It is planned that operations will commence upon approval of this application, with drilling and completion operations lasting about 30 days.



POGO PRODUCING COMPANY  
COVINGTON "A" FEDERAL WELL NO.13





1/15/12

