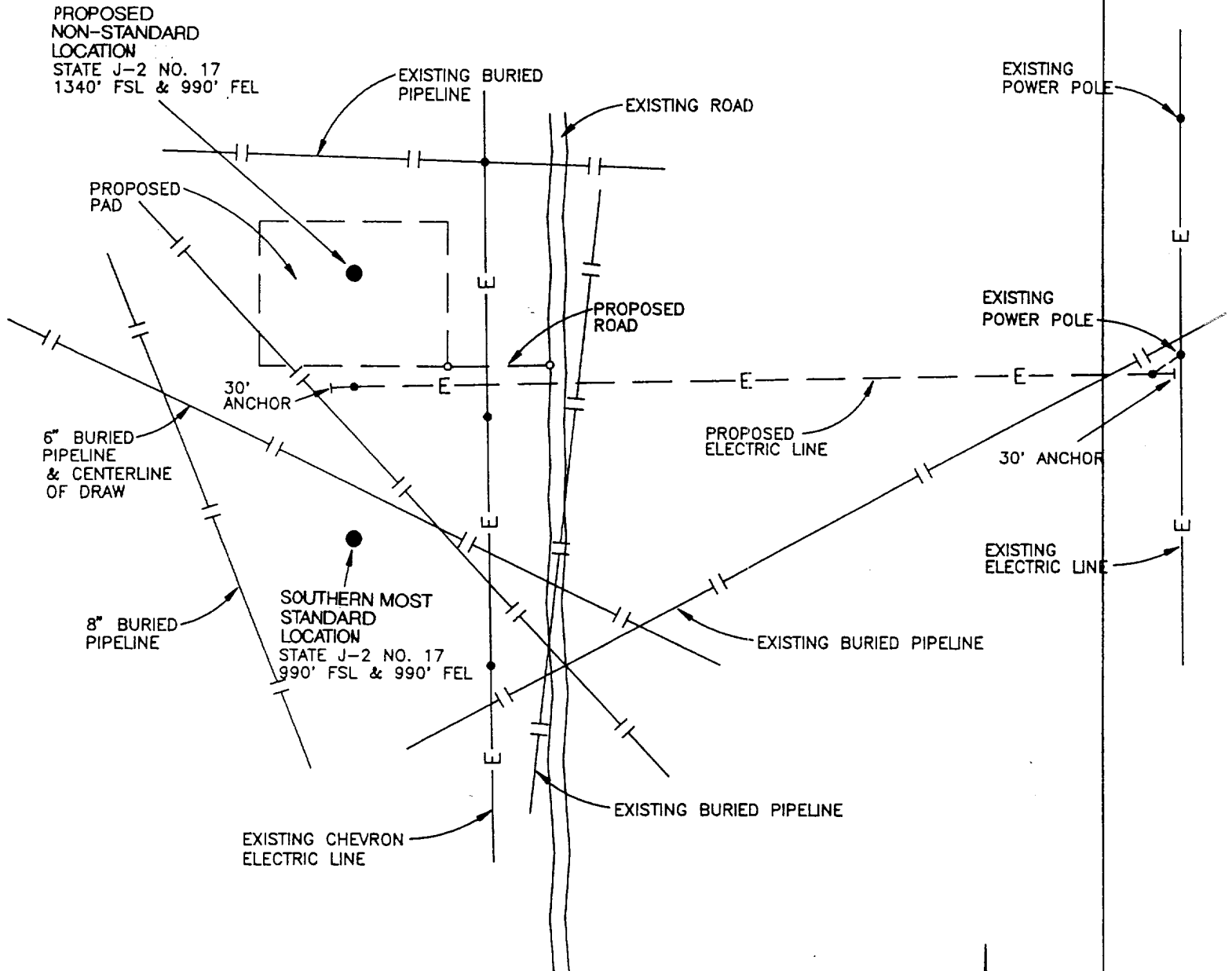


STATE LAND

2



PIPELINES, ELECTRIC LINES AND OTHER OBSTRUCTIONS
AFFECTING THE 990 FEET FROM THE SOUTH LINE
AND THE 990 FEET FROM THE EAST LINE POSITIONING
OF PROPOSED CONOCO, INC WELL STATE J-2 NO. 17
IN SECTION 2, T-22-S, R-36-E, N.M.P.M.
LEA COUNTY, NEW MEXICO

SCALE: 1" = 200'

VEST TEXAS CONSULTANTS, INC.
ENGINEERS - PLANNERS - SURVEYORS
801 N. INDUSTRIAL AVE.
MIDLAND, TEXAS

EXHIBIT D