

District I
PO Box 1980, Hobbs, NM 88241-1980
District II
PO Drawer DD, Artesia, NM 88211-0719
District III
1000 Rio Brazos Rd., Aztec, NM 87410
District IV
PO Box 2088, Santa Fe, NM 87504-2088

State of New Mexico
Energy, Minerals & Natural Resources Department

OIL CONSERVATION DIVISION
PO Box 2088
Santa Fe, NM 87504-2088

Form C-101
Revised February 21, 1994
Instructions on back
Submit to Appropriate District Office
State Lease - 6 Copies
Fee Lease - 5 Copies

☐ AMENDED REPORT

APPLICATION FOR PERMIT TO DRILL, RE-ENTER, DEEPEN, PLUGBACK, OR ADD A ZONE

Operator Name and Address: CONOCO INC. 10 DESTA DRIVE STE 100W MIDLAND, TEXAS 79705		OGRID Number 005073
Property Code 003099	Property Name 18377	API Number 30-025-33284
Well No. 1		

7 Surface Location

UL or lot no.	Section	Township	Range	Lot Idn	Feet from the	North/South line	Feet from the	East/West line	County
C	16	20S	37E		330	North	2080	West	Lea

8 Proposed Bottom Hole Location If Different From Surface

UL or lot no.	Section	Township	Range	Lot Idn	Feet from the	North/South line	Feet from the	East/West line	County

Proposed Pool 1 Monument Tubb	Proposed Pool 2
----------------------------------	-----------------

Work Type Code N	Well Type Code 0	Cable/Rotary R	Lease Type Code S	Ground Level Elevation 3533'
Multiple No	Proposed Depth 7000'	Formation Tubb	Contractor NA	Spud Date 2/15/96

21 Proposed Casing and Cement Program

Hole Size	Casing Size	Casing weight/foot	Setting Depth	Sacks of Cement	Estimated TOC
12 1/4"	8-5/8"	24H	1150'	770	surface
7-7/8"	5-1/2"	17H	7000'	1395	surface

Describe the proposed program. If this application is to DEEPEN or PLUG BACK give the data on the present productive zone and proposed new productive zone. Describe the blowout prevention program, if any. Use additional sheets if necessary.

It is proposed to drill this well vertically through the top of the Abo for a proposed Tubb completion according to the plan outlined in the following attachments:

1. Well Location & Acreage Dedication Plat (C-102)
2. Proposed Well Plan Outline
3. Cementing Program
4. BOP & Choke Manifold Specifications

Permit Expires 6 Months From Approval
Date Unless Drilling Underway.

I hereby certify that the information given above is true and complete to the best of my knowledge and belief.

Signature:

Printed name: Jerry W. Hoover

Title: Sr. Conservation Coordinator

Date: 1/30/96

Phone: (915) 686-6548

OIL CONSERVATION DIVISION

Approved by: ORIGINAL SIGNED BY

Title: JERRY WINK
DIST. II

Approval Date: FEB 02 1995

Expiration Date:

Conditions of Approval:

Attached ☐

District I
PO Box 1980, Hobbs, NM 88241-1980
District II
PO Drawer DD, Artesia, NM 88211-0719
District III
1000 Rio Brazos Rd., Aztec, NM 87410
District IV
PO Box 2088, Santa Fe, NM 87504-2088

State of New Mexico
Energy, Minerals & Natural Resources Department
OIL CONSERVATION DIVISION
PO Box 2088
Santa Fe, NM 87504-2088

Form C-102
Revised February 21, 1994
Instructions on back
Submit to Appropriate District Office
State Lease - 4 Copies
Fee Lease - 3 Copies

☐ AMENDED REPORT

WELL LOCATION AND ACREAGE DEDICATION PLAT

'API Number 30-025- 33284	'Pool Code 47090	'Pool Name Monument Tubb
'Property Code 13377 003099	'Property Name STATE CC 16	'Well Number 1
'GRID No. 005073	'Operator Name CONOCO, INC.	'Elevation 3533'

¹⁰ Surface Location

UL or lot no.	Section	Township	Range	Lot Idn.	Feet from the	North/South line	Feet from the	East/West line	County
C	16	20-S	37-E		330	NORTH	2080	WEST	LEA

¹¹ Bottom Hole Location If Different From Surface

UL or lot no.	Section	Township	Range	Lot Idn.	Feet from the	North/South line	Feet from the	East/West line	County

"Dedicated Acres 80-40	"Joint or Infill	"Consolidation Code	"Order No.
---------------------------	------------------	---------------------	------------

NO ALLOWABLE WILL BE ASSIGNED TO THIS COMPLETION UNTIL ALL INTERESTS HAVE BEEN CONSOLIDATED
OR A NON-STANDARD UNIT HAS BEEN APPROVED BY THE DIVISION

16 2080' 330'						17 OPERATOR CERTIFICATION I hereby certify that the information contained herein is true and complete to the best of my knowledge and belief. Signature JERRY W. HOOVER Printed Name SR. CONSERVATION COORDINATOR Title 1/30/96 Date
						18 SURVEYOR CERTIFICATION I hereby certify that the well location shown on this plat was plotted from field notes of actual surveys made by me or under my supervision, and that the same is true and correct to best of my belief. DECEMBER 8, 1995 Date of Survey Signature and Seal of Professional Surveyor: Earl Foote 8278 Certificate Number 8278

PROPOSED WELL PLAN OUTLINE

WELL NAME

STATE CC-16 NO. 1

LOCATION

330' FNL 2080' FWL SECT. 16 T-20S R-37E LEA CO.

TVD IN 1000'	MD	FORMATION TOPS & TYPE	DRILLING PROBLEMS	TYPE OF FORMATION EVALUATION	HOLE SIZE	CASING SIZE DEPTH	FRAC GRAD	FORMATION PRESSURE GRADIENT	MUD WT TYPE	DAYS
0			POSSIBLE HOLE ENLARGEMENT AND SLOUGHING		12-1/4"				8.4 FRESH	
1		T/ANHYDRITE 1120'				8-5/8" 1115'				3
2		T/SALT 1600'				24# K-55, ST&C 770 ex, circ cmt			10 BRINE	
3		B/SALT 2400'								
4		YATES 2730'								
5		7-RIVERS 3040'								
6		QUEEN 3210'								
7		GRAYBURG 3500'								
8			POSSIBLE LOST CIRCULATION AND SEEPAGE TO TOTAL DEPTH	H2S MONITOR ON AT 3500'	7-7/8"			Less than 8.3	BRINE STARCH 10 - 10.2	
9		GLORIETTA 5040'		2-MAN MUD LOGGERS ON AT 5000'						
10		BLINEBRY 5570'								
11		TUBB MARKER 6290'								
12		TUBB 6370'								
13		DRINKARD 6590'								
14		ABO 6900'								
15		TD 7000'		GR-CAL-DDL-MSFL 7000' - 5000'		5 1/2" TD 7000'		Less than 8.3 BHP = 2650 psi		17
16				GR-CAL-FDC-CNL-PE 7000' - 5000'		17# L-80, LT&C 1395 ex, circ cmt				
17				Dx-Electric 2000' min						

DATE JANUARY 1, 1996

APPROVED

BILLY GOODWIN

DRILLING ENGINEER

Well Name : State CC-16 #1

Location : Sec 28, T-20S, R-38E, Lea County, New Mexico

Casing Program

Surface : 8 5/8" casing in 12 1/4" Hole at 1150 ft.

Production : 5 1/2" casing in 7 7/8" Hole at 7000 ft.

Cementing Program

Surface

Lead 420 sacks Class C Mixed at 13.7 ppg

Additives 4% Gel + 2% A7P + 0.2% Sodium Metasilicate.

Tail 200 sacks Class C Mixed at 14.8 ppg

Additives 2% A-7P.

Production

Lead 765 sacks Class C Mixed at 12 ppg

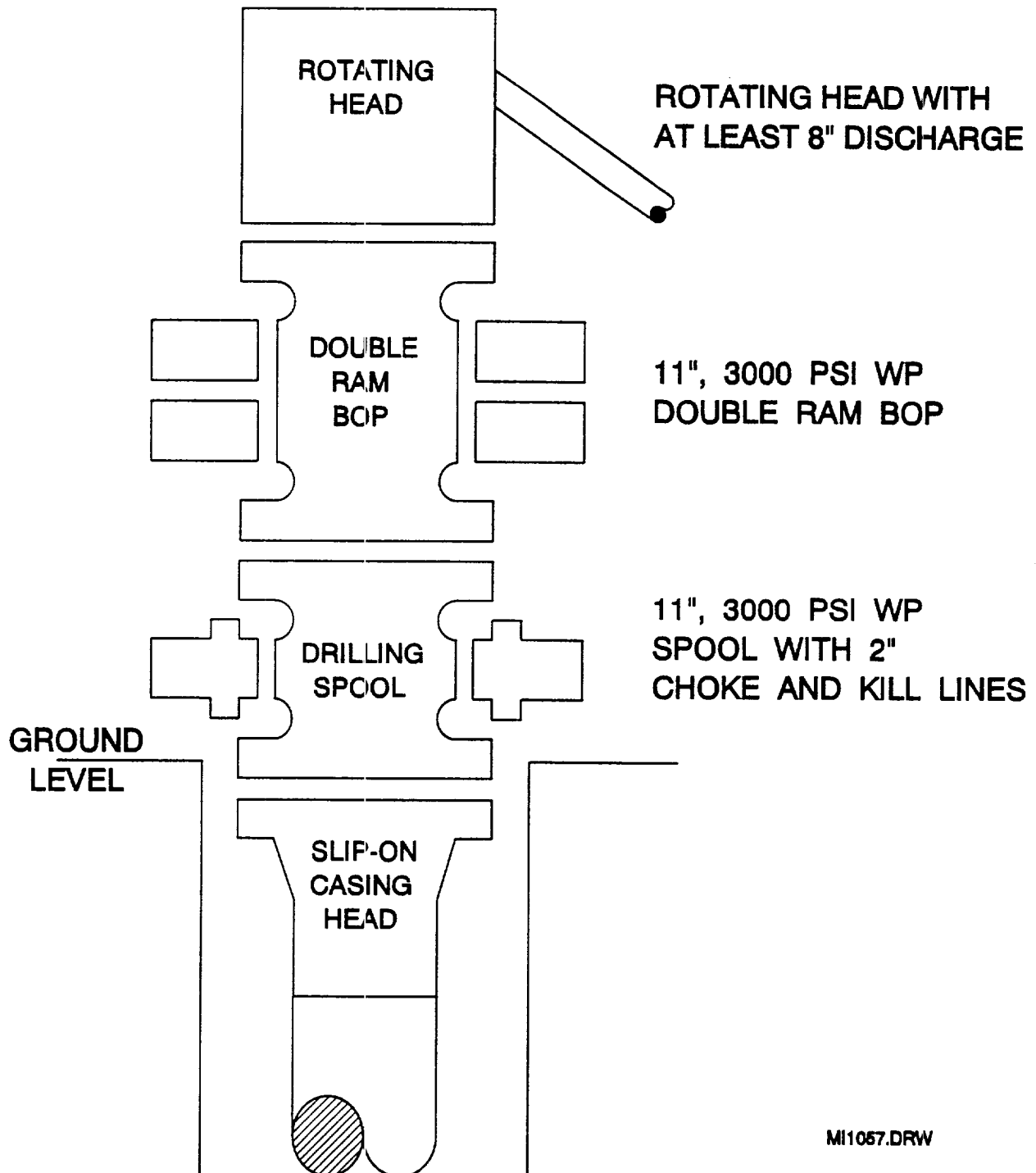
Additives 16% Gel + 3% Salt + 0.3% CD-32 + 0.3% SMS.

Tail 555 sacks Class C Mixed at 14.8 ppg

Additives 1.1% FL-62 + 2% BA-90 + 3% Salt + 0.3% CD-32
+ 0.2% SMS.

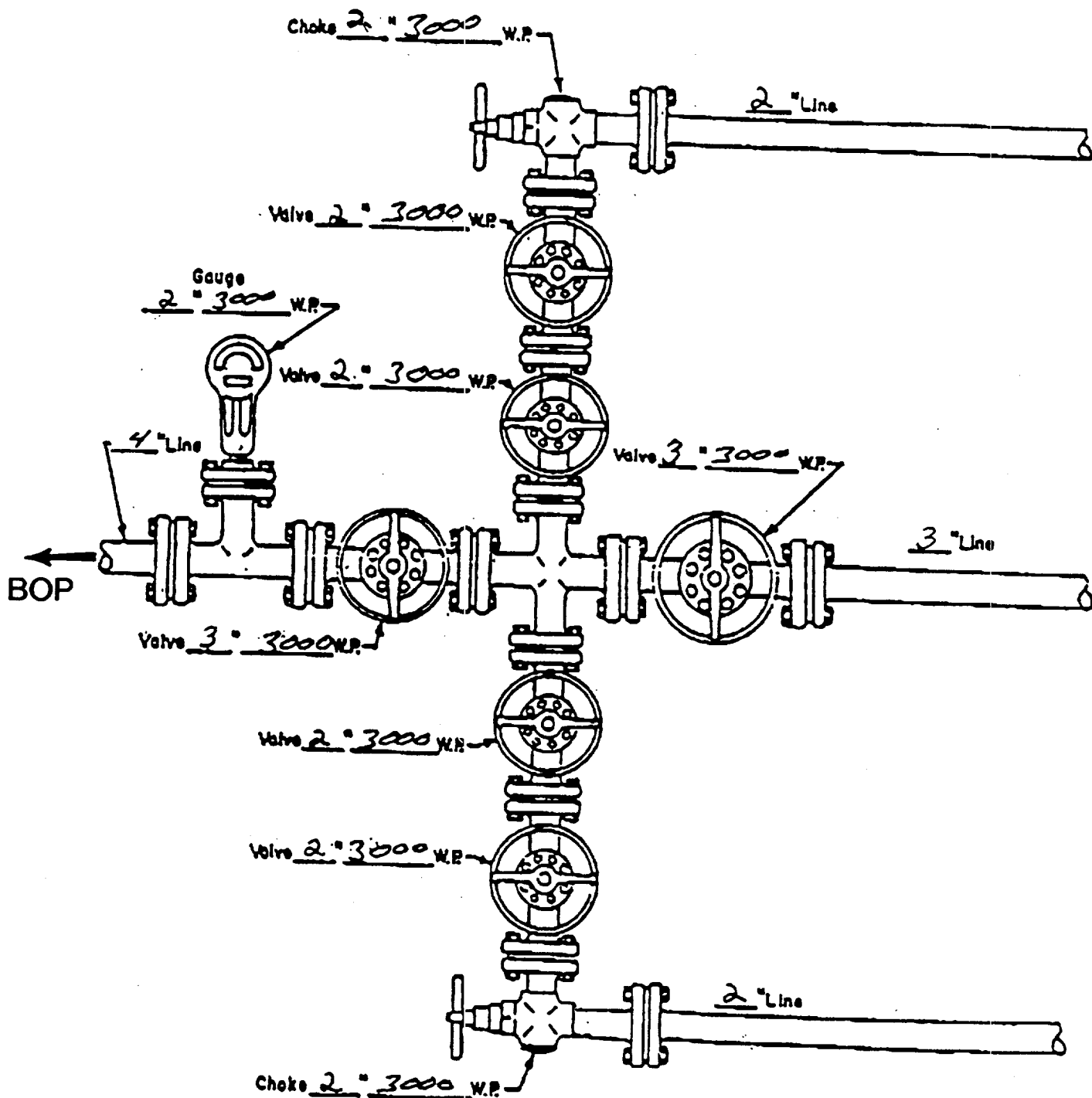
Free Water 0 % Fluid Loss 50 cc/30 min.

BOP SPECIFICATIONS



MI1057.DRW

CHOKE MANIFOLD DIAGRAM



MANIFOLD
3000 #W.P.

- ☒ Manual
- ☐ Hydraulic