

District I
PO Box 1980, Hobbs, NM 88241-1980
District II
PO Drawer DD, Artesia, NM 88211-0719
District III
1000 Rio Brazos Rd., Aztec, NM 87410
District IV
PO Box 2088, Santa Fe, NM 87504-2088

State of New Mexico
Energy, Minerals & Natural Resources Department

OIL CONSERVATION DIVISION
PO Box 2088
Santa Fe, NM 87504-2088

Form C-101
Revised February 10, 1994
Instructions on back
Submit to Appropriate District Office
State Lease - 6 Copies
Fee Lease - 5 Copies

☐ AMENDED REPORT

APPLICATION FOR PERMIT TO DRILL, RE-ENTER, DEEPEN, PLUGBACK, OR ADD A ZONE

Operator Name and Address: Pogo Producing Company P.O. Box 10340 Midland, Texas 79702		OGRID Number 017891
		API Number 30-025-33431
Property Code 17440	Property Name Red Tank "31" State	Well No. 2

7 Surface Location

UL or lot no.	Section	Township	Range	Lot Ida	Feet from the	North/South line	Feet from the	East/West line	County
E/ Lot 2	31	22S	33E	2	1650'	North	330'	West	Lea

8 Proposed Bottom Hole Location If Different From Surface

UL or lot no.	Section	Township	Range	Lot Ida	Feet from the	North/South line	Feet from the	East/West line	County
Proposed Pool 1 RED TANK; Bone Springs, EAST					Proposed Pool 2				

Work Type Code N	Well Type Code O	Cable/Rotary R	Lease Type Code S	Ground Level Elevation 3744'
Multiple S	Proposed Depth 9300'	Formation Bone Springs	Contractor N/A	Spud Date Upon Approval

21 Proposed Casing and Cement Program

Hole Size	Casing Size	Casing weight/foot	Setting Depth	Sacks of Cement	Estimated TOC
14-3/4"	10 3/4"	32# J-55	800'	650 sks.	Surface
9-7/8"	7 5/8"	26# J55+N80	4650'	1300 sks.	"
6-3/4"	4 1/2"	11.60#J55+N80	9300'	1100 sks.	4100'

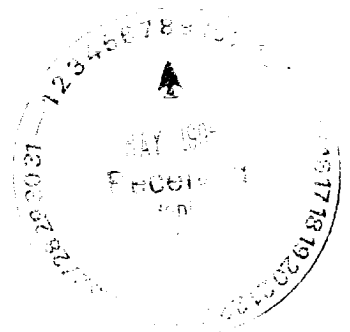
Describe the proposed program. If this application is to DEEPEN or PLUG BACK give the data on the present productive zone and proposed new productive zone. Describe the blowout prevention program, if any. Use additional sheets if necessary.

This proposed well is a Delaware/Bone Springs test.

B.O.P. Sketch is attached.

Permit Expires 1 Year From Approval
Date Unless Drilling Underway

I hereby certify that the information given above is true and complete to the best of my knowledge and belief. Signature: <i>James M.C. Ritchie, Jr.</i>		OIL CONSERVATION DIVISION	
Printed name: James M.C. Ritchie, Jr.		Approved by: ORIGINAL SIGNED BY	
Title: Agent		Title: GARY WINK FIELD REP. II	
Date: 5/03/96		Approval Date: MAY 09 1996 Expiration Date:	
Phone: (915) 682-6601		Conditions of Approval: Attached <input type="checkbox"/>	



DISTRICT I
P.O. Box 1980, Hobbs, NM 88241-1980

State of New Mexico
Energy, Minerals and Natural Resources Department

Form C-102
Revised February 10, 1994
Submit to Appropriate District Office
State Lease - 4 Copies
Fee Lease - 3 Copies

DISTRICT II
P.O. Drawer DD, Artesia, NM 88211-0719

DISTRICT III
1000 Rio Brazos Rd., Aztec, NM 87410

DISTRICT IV
P.O. BOX 2068, SANTA FE, N.M. 87504-2068

OIL CONSERVATION DIVISION

P.O. Box 2088
Santa Fe, New Mexico 87504-2088

☐ AMENDED REPORT

WELL LOCATION AND ACREAGE DEDICATION PLAT

API Number 30-025-33431	Pool Code 51687	Pool Name Red Tank; Bone Springs, East
Property Code 17440	Property Name RED TANK "31" STATE	Well Number 2
OGRID No. 017891	Operator Name POGO PRODUCING COMPANY	Elevation 3744

Surface Location

UL or lot No. E/ LOT 2	Section 31	Township 22 S	Range 33 E	Lot Idn 2	Feet from the 1650	North/South line NORTH	Feet from the 330	East/West line WEST	County LEA
----------------------------------	----------------------	-------------------------	----------------------	---------------------	------------------------------	----------------------------------	-----------------------------	-------------------------------	----------------------

Bottom Hole Location If Different From Surface

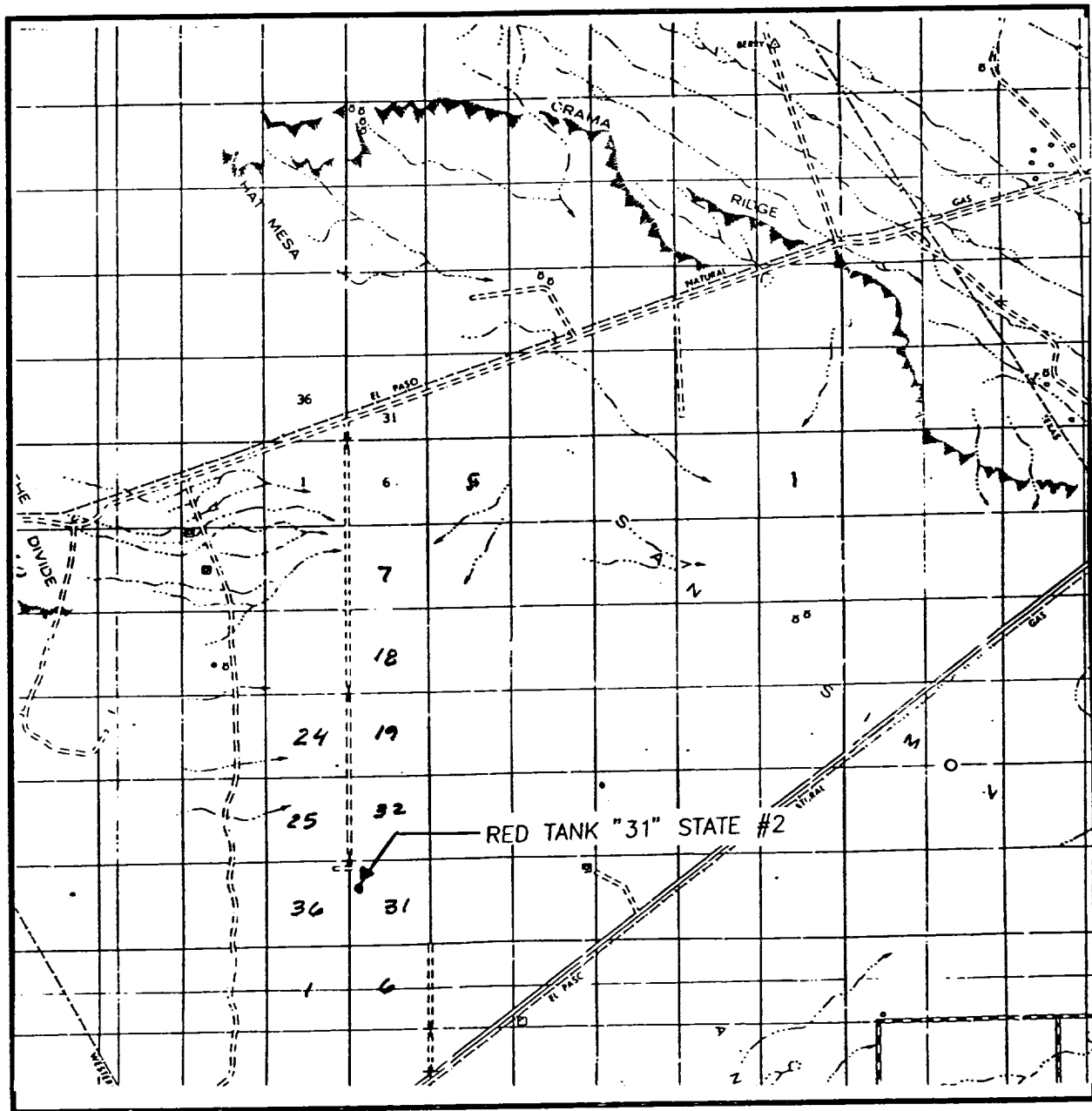
UL or lot No.	Section	Township	Range	Lot Idn	Feet from the	North/South line	Feet from the	East/West line	County
Dedicated Acres 40	Joint or Infill	Consolidation Code	Order No.						

NO ALLOWABLE WILL BE ASSIGNED TO THIS COMPLETION UNTIL ALL INTERESTS HAVE BEEN CONSOLIDATED
OR A NON-STANDARD UNIT HAS BEEN APPROVED BY THE DIVISION

	<p>OPERATOR CERTIFICATION</p> <p>I hereby certify the the information contained herein is true and complete to the best of my knowledge and belief.</p> <p><i>James M.C. Ritchie, Jr.</i> Signature James M.C. Ritchie, Jr. Printed Name Agent Title May 3, 1996 Date</p> <p>SURVEYOR CERTIFICATION</p> <p>I hereby certify that the well location shown on this plat was plotted from field notes of actual surveys made by me or under my supervision, and that the same is true and correct to the best of my belief.</p> <p>APRIL 22, 1996</p> <p>Date Surveyed DMCC Signature & Seal of Professional Surveyor <i>Ronald B. Eidson</i> RONALD B. EIDSON Certificate No. JOHN W. WEST 676 RONALD B. EIDSON 3239 CARL EIDSON 12641</p>
--	---



VICINITY MAP



SCALE: 1" = 2 MILES

SEC. 31 TWP. 22-S RGE. 33-E

SURVEY N.M.P.M.

COUNTY LEA

DESCRIPTION 1650' FNL & 330' FWL

ELEVATION 3744

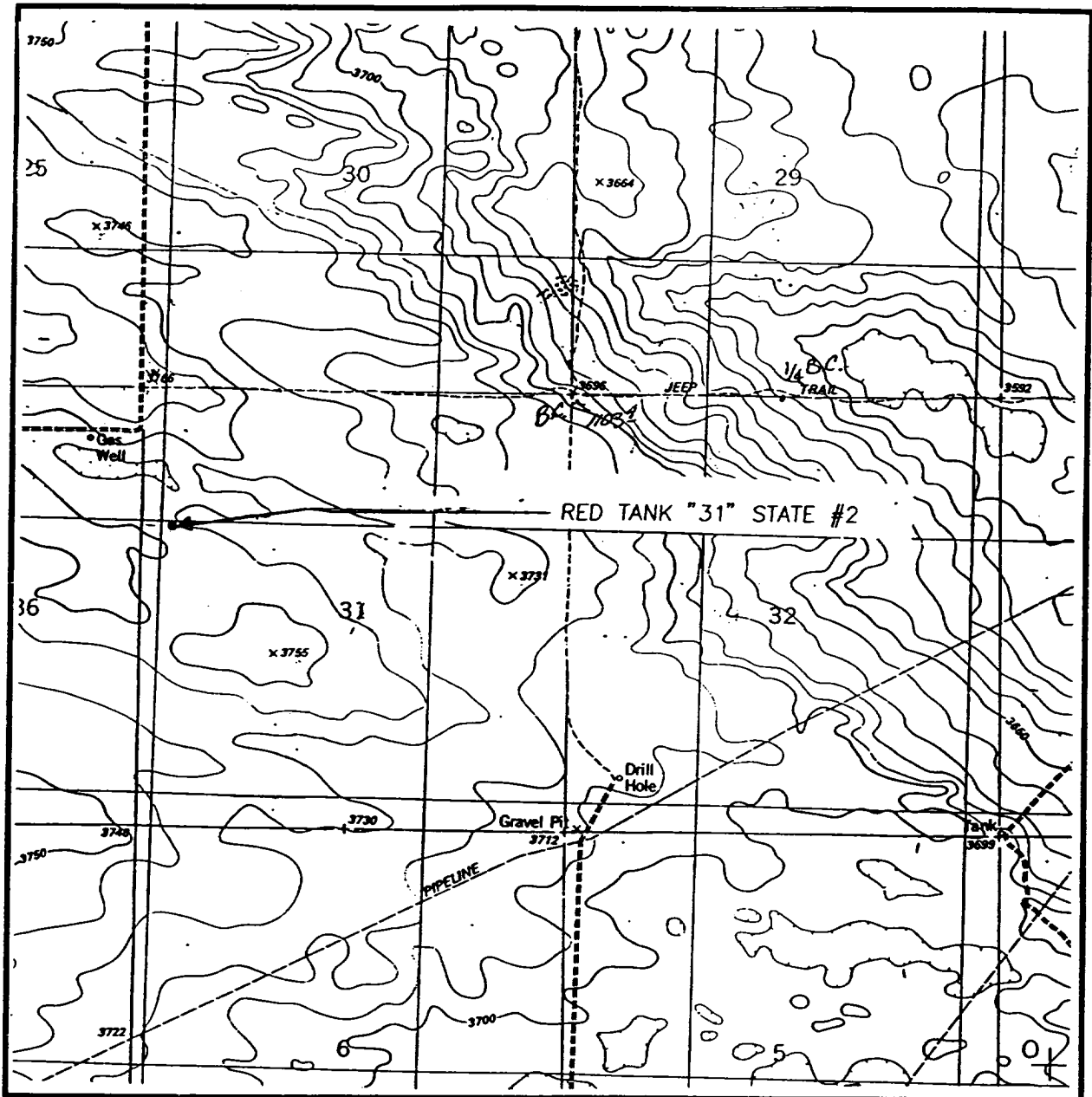
OPERATOR POGO PRODUCING COMPANY

LEASE RED TANK "31" STATE

JOHN WEST ENGINEERING
HOBBS, NEW MEXICO
(505) 393-3117



LOCATION VERIFICATION MAP



SCALE: 1" = 2000'

CONTOUR INTERVAL:
TIP TOP WELLS - 10'

SEC. 31 TWP. 22-S RGE. 33-E

SURVEY N.M.P.M.

COUNTY LEA

DESCRIPTION 1650' FNL & 330' FWL

ELEVATION 3744

OPERATOR POGO PRODUCING COMPANY

LEASE RED TANK "31" STATE

U.S.G.S. TOPOGRAPHIC MAP

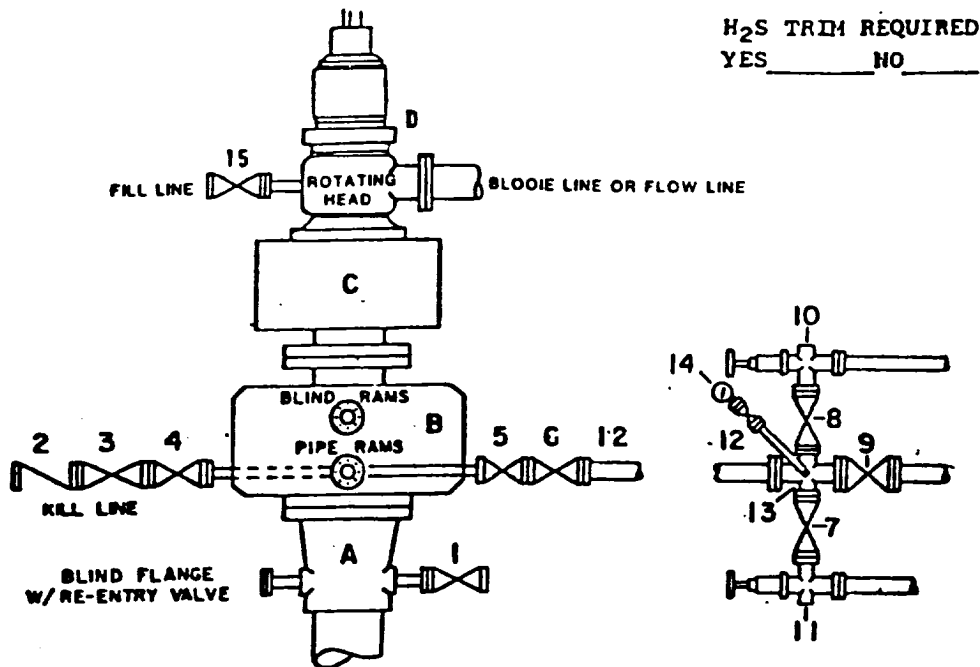
TIP TOP WELLS, N.M.

**JOHN WEST ENGINEERING
HOBBS, NEW MEXICO**

(505) 393-3117



DRILLING CONTROL **CONDITION III-B 3000 PSI WP**



H₂S TRIM REQUIRED
 YES _____ NO _____

DRILLING CONTROL

MATERIAL LIST - CONDITION III - B

- | | |
|------------|---|
| A | Wellhead |
| B | 3000# W.P. Dual ram type preventer, hydraulic operated with 1" steel, 3000# W.P. control lines (where sub-structure height is adequate, 2 - 3000# W.P. single ram preventers may be utilized with 3000# W.P. drilling spool with 2" minimum flanged outlet for kill line and 3" minimum flanged outlet for choke line. The drilling spool is to be installed below the single ram type preventers). |
| C | 3000# W.P. Annular Preventer with 1" steel, 3000# W.P. control lines. |
| D | Rotating Head with fill up outlet and extended Bleeed line. |
| 1,3,4,7,8, | 2" minimum 3000# W.P. flanged full opening steel gate valve, or Halliburton Lo Torc Plug valve. |
| 2 | 2" minimum 3000# W.P. back pressure valve. |
| 5,6,9 | 3" minimum 3000# W.P. flanged full opening steel gate valve, or Halliburton Lo Torc Plug valve. |
| 12 | 3" minimum Schedule 80, Grade B, seamless line pipe. |
| 13 | 2" minimum x 3" minimum 3000# W.P. flanged cross. |
| 10,11 | 2" minimum 3000# W.P. adjustable choke bodies. |
| 14 | Cameron Mud Gauge or equivalent (location optional in Choke line). |
| 15 | 2" minimum 3000# W.P. flanged or threaded full opening steel gate valve, or Halliburton Lo Torc Plug valve. |

SCALE	DATE	EST NO	DRG NO.
DRAWN BY			
CHECKED BY			
APPROVED BY			

EXHIBIT E

ELF

ABOVE DATE DO NOT
INDICATE WHEN
CONFIDENTIAL L
WILL BE RELEA

