

UNITED
DEPARTMENT OF
BUREAU OF LANDOPER. OGRID NO. 7412
PROPERTY NO. 312
POOL CODE 96343
EFF. DATE 6/14/96
API NO. 30-025-33487STATE COMMISSION FORM APPROVED
NO. 1004-0136
Expires: February 28, 1995MEXICO-88240
L-88240 INFORMATION AND SERIAL NO.
LC 031695B
6. IF INDIAN, ALLOTTEE OR TRIBE NAME
7. UNIT AGREEMENT NAME
8. FARM OR LEASE NAME, WELL NO.
Warren Unit No. 134
9. API WELL NO.
30-025-
10. FIELD AND POOL, OR WILDCAT
Warren San Andres
11. SEC., T., R., M., OR BLK.
AND SURVEY OR AREA
Sec. 28, T-20S, R-38E
12. COUNTY OR PARISH
Lea
13. STATE
NM

APPLICATION FOR PERMIT

1A. TYPE OF WORK

DRILL ☒

B. TYPE OF WELL

OIL
WELL ☒GAS
WELL ☐OTHER ☐SINGLE
ZONE ☒MULTIPLE
ZONE ☐

2. NAME OF OPERATOR

Conoco, Inc.

(915) 686-6548

3. ADDRESS AND TELEPHONE NO.

10 Desta Dr. Ste 100W, Midland, TX 79705

4. LOCATION OF WELL (Report location clearly and in accordance with any State requirements.)

At surface

2180' FNL & 890' FEL

At proposed prod. zone 2180' FNL & 890' FEL

14. DISTANCE IN MILES AND DIRECTION FROM NEAREST TOWN OR POST OFFICE*

15. DISTANCE FROM PROPOSED*

LOCATION TO NEAREST
PROPERTY OR LEASE LINE, FT.
(Also to nearest drilg. unit line, if any)

16. NO. OF ACRES IN LEASE

17. NO. OF ACRES ASSIGNED
TO THIS WELL

40

18. DISTANCE FROM PROPOSED LOCATION*
TO NEAREST WELL, DRILLING, COMPLETED,
OR APPLIED FOR, ON THIS LEASE, FT.

19. PROPOSED DEPTH

4650'

20. ROTARY OR CABLE TOOLS

Rotary

21. ELEVATIONS (Show whether DF, RT, GR, etc.)

3543'

22. APPROX. DATE WORK WILL START*

6/15/96

23.

PROPOSED CASING AND CEMENTING PROGRAM

SIZE OF HOLE	GRADE SIZE OF CASING	WEIGHT PER FOOT	SETTING DEPTH	QUANTITY OF CEMENT
12-1/4"	8-5/8"	24#	420'	350 circulated
7-7/8"	5-1/2"	15.5#	4650'	935 circulated

It is proposed to drill a vertical wellbore through the San Andres according to the plan submitted in the following attachments:

1. Well Location and Acreage Dedication Plat (C-102)
2. Proposed Well Plan Outline.
3. Surface Use Plan
4. EXHIBIT A: Vicinity and Lease Road Maps
5. EXHIBIT B: 7.5" Quadrangle Topo Map.
6. EXHIBITS C.1 & C.2: powerline right-of-ways.
7. EXHIBIT D: Trailer-mounted rig layout
8. BOP and Choke Manifold Specifications
9. H2S Drilling Operations Plan
10. Letter verifying negotiations with surface land owner.
11. An archeological survey has been ordered and will be filed as soon as completed.

COPY SUBJECT TO
GENERAL REQUIREMENTS AND
SPECIAL STIPULATIONS
ATTACHED

IN ABOVE SPACE DESCRIBE PROPOSED PROGRAM: If proposal is to deepen, give data on present productive zone and proposed new productive zone. If proposal is to drill or deepen directionally, give pertinent data on subsurface locations and measured and true vertical depths. Give blowout preventer program, if any.

24.

SIGNED

Sr. Conservation Coordinator

TITLE

DATE 5/6/96

(This space for Federal or State office use)

PERMIT NO.

APPROVAL DATE

Application approval does not warrant or certify that the applicant holds legal or equitable title to those rights in the subject lease which would entitle the applicant to conduct operations thereon.

CONDITIONS OF APPROVAL, IF ANY:

APPROVED BY (ORIG. SGD.) RICHARD L. MANUS

TITLE

Area Manager

DATE

6-10-96

*See Instructions On Reverse Side

Title 18 U.S.C. Section 1001, makes it a crime for any person knowingly and willfully to make to any department or agency of the United States any false, fictitious or fraudulent statements or representations as to any matter within its jurisdiction.

District I
PO Box 1980, Hobbs, NM 88241-1980
District II
PO Drawer DD, Artesia, NM 88211-0719
District III
1000 Rio Brazos Rd., Artec, NM 87410
District IV
PO Box 2088, Santa Fe, NM 87504-2088

State of New Mexico
Energy, Minerals & Natural Resources Department

OIL CONSERVATION DIVISION
PO Box 2088
Santa Fe, NM 87504-2088

Form C-102
Revised February 21, 1994
Instructions on back
Submit to Appropriate District Office
State Lease - 4 Copies
Fee Lease - 3 Copies

☐ AMENDED REPORT

WELL LOCATION AND ACREAGE DEDICATION PLAT

'API Number 30-025- 331127		'Pool Code 96343		'Pool Name Warren San Andres	
'Property Code 003122		'Property Name WARREN UNIT			'Well Number 134
'OGRID No. 005073		'Operator Name CONOCO, INC.			'Elevation 3543'

¹⁰ Surface Location

UL or lot no. H	Section 28	Township 20-S	Range 38-E	Lot Idn	Feet from the 2180	North/South line NORTH	Feet from the 890	East/West line EAST	County LEA
--------------------	---------------	------------------	---------------	---------	-----------------------	---------------------------	----------------------	------------------------	---------------

¹¹ Bottom Hole Location If Different From Surface

UL or lot no.	Section	Township	Range	Lot Idn	Feet from the	North/South line	Feet from the	East/West line	County
"Dedicated Acres 40		"Joint or Infill		"Consolidation Code		"Order No.			

NO ALLOWABLE WILL BE ASSIGNED TO THIS COMPLETION UNTIL ALL INTERESTS HAVE BEEN CONSOLIDATED
OR A NON-STANDARD UNIT HAS BEEN APPROVED BY THE DIVISION

<div>16</div>				<div>17 OPERATOR CERTIFICATION</div> <p>I hereby certify that the information contained herein is true and complete to the best of my knowledge and belief.</p> <p><i>Jerry W. Hoover</i> Signature JERRY W. HOOVER Printed Name SR. CONSERVATION COORDINATOR Title 5/7/96 Date</p>	
				<div>18 SURVEYOR CERTIFICATION</div> <p>I hereby certify that the well location shown on this plat was plotted from field notes of actual surveys made by me or under my supervision, and that the same is true and correct to best of my belief.</p> <p>DECEMBER 8, 1995 Date of Survey Signature and Seal of <i>Earl Foote</i> REGISTERED PROFESSIONAL LAND SURVEYOR 8278 Certificate Number</p>	

PROPOSED WELL PLAN OUTLINE

WELL NAME
LOCATION

WARREN UNIT NO. 134
2180' FNL & 890' FEL, SEC.28, T-20S, R-38E, LEA CO.

TVD IN 1000'	MD	FORMATION TOPS & TYPE	DRILLING PROBLEMS	TYPE OF FORMATION EVALUATION	HOLE SIZE	CASING SIZE	DEPTH	FRAC GRAD	FORMATION PRESSURE GRADIENT	MUD WT	MUD TYPE	DAY
0			POSSIBLE HOLE ENLARGEMENT & SLOUGHING		12-1/4"		420"			8.4	FRESH	
1		RUSTLER 1430'			7-7/8"	8-5/8" 24#, K-55, ST&C 350 sxs circ				10	BRINE STARCH	3
2		BASE SALT 2546'							LESS THAN 8.3			
3		YATES 2712'										
3		7-RIVERS 2970'										5
		QUEEN 3334'										
		PENROSE 3520'										8
		GRAYBURG 3836'										
4		SAN ANDRES 4016'										
		TD = 4650'		GR-CAL-DDL-MSFL from 2500' - TD GR-CAL-FDC-CNL-PE from 2500' - TD RFT's, Numar? bring GR-CAL to SURFACE ON ONE SUITE		5 1/2" 15.5#, K-55, LT&C 935 sxs, attempt to circulate	4650		BHP = 1400 psi			14
5												
6												
7												
8												

DATE 29 April, 1996

APPROVED Billy Goodwin
DRILLING ENGINEER

Well Name : Warren Unit #134

Location : 2180' FNL & 890' FEL Sec 28, T-20S, R-38E, Lea County, New Mexico

Casing Program :

Surface 8 5/8" casing in 12 1/4" Hole at 420 ft.

Production 5 1/2" casing in 7 7/8" Hole at 4650 ft.

Cementing Program :

Surface

Lead 250 sacks Class C Mixed at 13.7 ppg
Additives 4% Gel + 2% A7P + 0.2% Sodium Metasilicate

Tail 100 sacks Class C Mixed at 14.8 ppg
Additives 2% A-7P

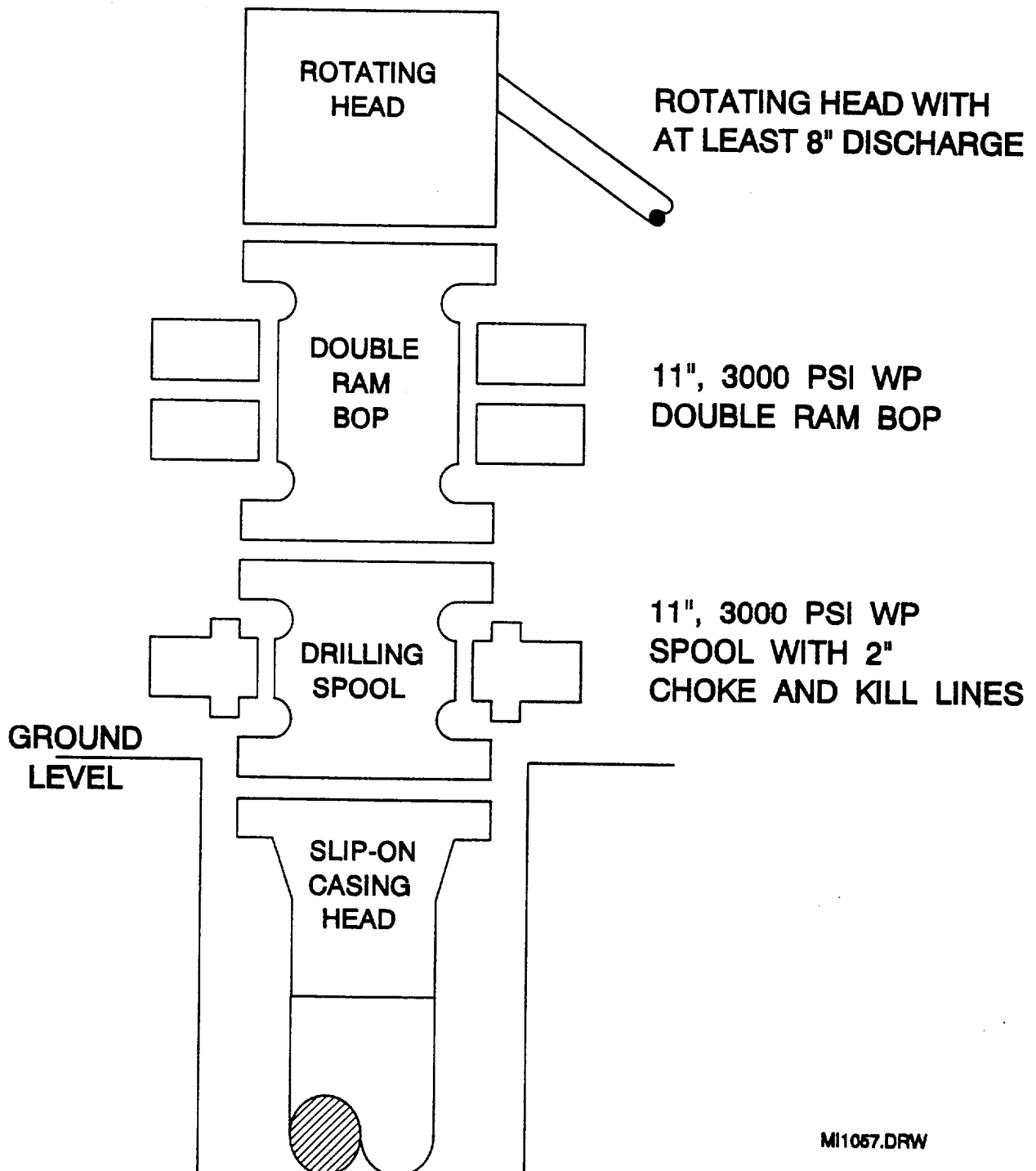
Production

Lead 455 sacks Class C Mixed at 12 ppg
Additives 16% Gel + 3% Salt + 0.3% CD-32 + 0.3% SMS

Tail 480 sacks Class C Mixed at 14.8 ppg
Additives 1.1% FL-62 + 2% BA-90 + 3% Salt + 0.3% CD-32
+ 0.2% SMS

Free Water 0 % Fluid Loss 80 cc/30 min.

BOP SPECIFICATIONS



MI1057.DRW