

N.M. OIL
O. BOX OPER. CORR. NO. 5072
OBBS. I PROPERTY NO. 3121
UNITED POOL CODE 62965
DEPARTMENT OF BUREAU OF LAND MANAGEMENT
EFF. DATE 9/8/96
APPLICATION FOR PERMIT API NO. 30-025-33619DATE
ONFORM APPROVED
OMB NO. 1004-0136
Expires: February 28, 1995

1a. TYPE OF WORK

DRILL ☒DEEPEN ☐

b. TYPE OF WELL

OIL WELL ☒GAS WELL ☐OTHER ☐SINGLE ZONE ☒MULTIPLE ZONE ☐

2. NAME OF OPERATOR

Conoco, Inc. --- 005073

(915) 686-6548

3. ADDRESS AND TELEPHONE NO.

10 Desta Dr. Ste 100W, Midland, TX 79705

4. LOCATION OF WELL (Report location clearly and in accordance with any State requirements.)

At surface

2630' FNL & 1330' FWL UNORTHODOX

At proposed prod. zone

2630' FNL & 1330' FWL

LOCATION:

Unit F

Submitted
for Approval
By State

14. DISTANCE IN MILES AND DIRECTION FROM NEAREST TOWN OR POST OFFICE*

15. DISTANCE FROM PROPOSED*

LOCATION TO NEAREST
PROPERTY OR LEASE LINE, FT.
(Also to nearest drlg. unit line, if any)

16. NO. OF ACRES IN LEASE

17. NO. OF ACRES ASSIGNED
TO THIS WELL

40

18. DISTANCE FROM PROPOSED LOCATION*
TO NEAREST WELL, DRILLING, COMPLETED,
OR APPLIED FOR, ON THIS LEASE, FT.

19. PROPOSED DEPTH

6700'

20. ROTARY OR CABLE TOOLS

Rotary

21. ELEVATIONS (Show whether DF, RT, GR. etc.)

3518

22. APPROX. DATE WORK WILL START*

ASAP

23.

PROPOSED CASING AND CEMENTING PROGRAM

SIZE OF HOLE	GRADE SIZE OF CASING	WEIGHT PER FOOT	SETTING DEPTH	QUANTITY OF CEMENT
12-1/4"	K-55 8-5/8"	24#	1500'	835 SK CIRCULATE
7-7/8"	K-55 5-1/2"	15.5#	6700'	1240 SK

It is proposed to drill a vertical Wellbore as an infill Blinbry-Tubb Producer according to the plan submitted in the following attachments:

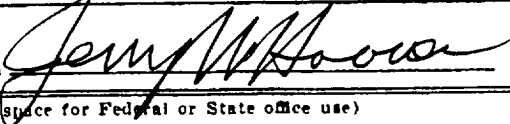
1. Well Location and Acreage Dedication Plat (C-102)
2. Proposed Well Plan Outline.
3. Surface Use Plan
4. EXHIBIT A: Vicinity and Lease Road Map
5. EXHIBIT B: 7.5" Quadrangle Topo Map.
6. EXHIBITS C.1 - C.4: Road, Pipeline, & Powerline plats.
7. EXHIBIT D: Trailer-mounted rig layout.
8. BOP and choke Manifold Specifications.
9. H2S Drilling Operations Plan.
10. An archeological survey will be submitted as soon as completed.

Even though this is normally an unorthodox location, as an infill location in a secondary recovery project it will automatically be approved as orthodox according to the recently revised NMOC Rule 104.

IN ABOVE SPACE DESCRIBE PROPOSED PROGRAM: If proposal is to deepen, give data on present productive zone and proposed new productive zone. If proposal is to drill or deepen directionally, give pertinent data on subsurface locations and measured and true vertical depths. Give blowout preventer program, if any.

24.

SIGNED



TITLE Sr. Conservation Coordinator

DATE 8/30/96

(This space for Federal or State office use)

PERMIT NO.

APPROVAL DATE

Application approval does not warrant or certify that the applicant holds legal or equitable title to those rights in the subject lease which would entitle the applicant to conduct operations thereon.
CONDITIONS OF APPROVAL, IF ANY:

APPROVED BY (ORIG. SGD.) RICHARD L. MANUS

TITLE

DATE

OCT 4 1996

*See Instructions On Reverse Side

Title 18 U.S.C. Section 1001, makes it a crime for any person knowingly and willfully to make to any department or agency of the United States any false, fictitious or fraudulent statements or representations as to any matter within its jurisdiction.



District I
PO Box 1980, Hobbs, NM 88241-1980

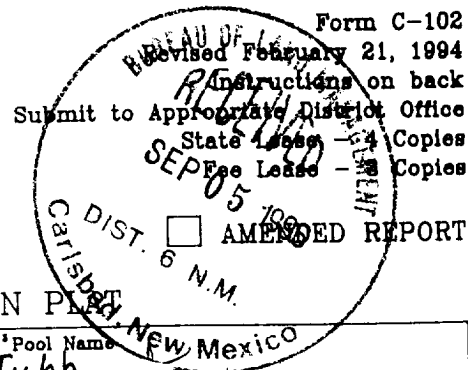
District II
PO Drawer DD, Artesia, NM 88211-0719

District III
1000 Rio Brazos Rd., Aztec, NM 87410

District IV
PO Box 2088, Santa Fe, NM 87504-2088

State of New Mexico
Energy, Minerals & Natural Resources Department

OIL CONSERVATION DIVISION
PO Box 2088
Santa Fe, NM 87504-2088



WELL LOCATION AND ACREAGE DEDICATION PLAN

*API Number 30-025-33619		*Pool Code 62965	*Pool Name Warren Blinbry-Tubb
*Property Code 003127	*Property Name WARREN UNIT Blinbry-Tubb WF		*Well Number 207
*GRID No. 005073	*Operator Name CONOCO, INC.		*Elevation 3518'

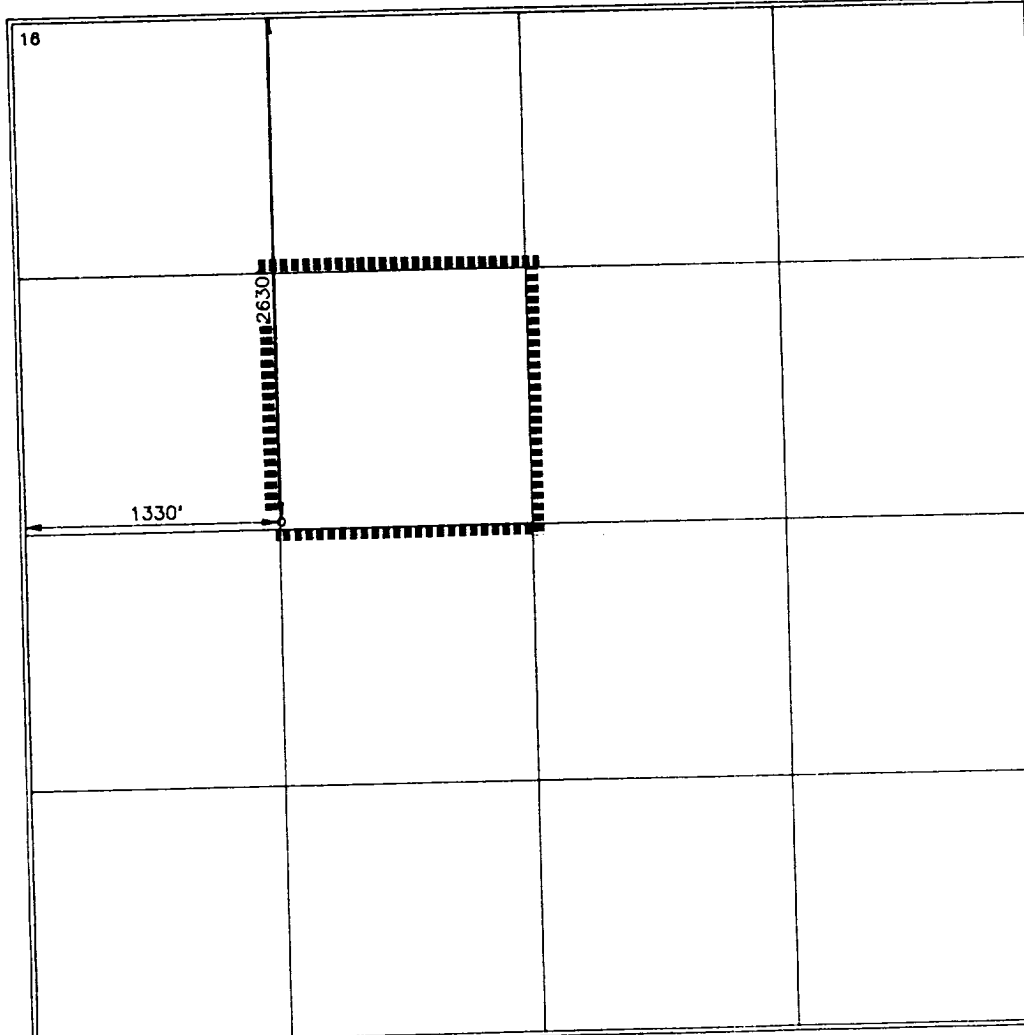
10 Surface Location

UL or lot no.	Section	Township	Range	Lot Idn	Feet from the	North/South line	Feet from the	East/West line	County
F	34	20-S	38-E		2630	NORTH	1330	WEST	LEA

11 Bottom Hole Location If Different From Surface

UL or lot no.	Section	Township	Range	Lot Idn	Feet from the	North/South line	Feet from the	East/West line	County
*Dedicated Acres 40		*Joint or Infill		*Consolidation Code		*Order No.			

NO ALLOWABLE WILL BE ASSIGNED TO THIS COMPLETION UNTIL ALL INTERESTS HAVE BEEN CONSOLIDATED OR A NON-STANDARD UNIT HAS BEEN APPROVED BY THE DIVISION



17 OPERATOR CERTIFICATION

I hereby certify that the information contained herein is true and complete to the best of my knowledge and belief.

[Signature]
Signature

JERRY W. HOOVER

Printed Name

SR. CONSERVATION COORDINATOR

Title

8/30/96

Date

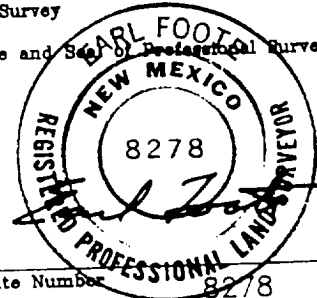
18 SURVEYOR CERTIFICATION

I hereby certify that the well location shown on this plat was plotted from field notes of actual surveys made by me or under my supervision, and that the same is true and correct to best of my belief.

APRIL 12, 1995

Date of Survey

Signature and Seal of Professional Surveyor:



Certificate Number 8278

PROPOSED WELL PLAN OUTLINE

WELL NAME
LOCATION

WARREN UNIT NO. 207
2630' FNL & 1330' FWL, SEC. 34, T-20S, R-38E, LEA CO.

TVD IN 1000'	MD	FORMATION TOPS & TYPE	DRILLING PROBLEMS	TYPE OF FORMATION EVALUATION	HOLE SIZE	CASING SIZE	DEPTH	FRAC GRAD	FORMATION PRESSURE GRADIENT	MUD WT	MUD TYPE	DAY
0			POSSIBLE HOLE ENLARGEMENT AND SLOUGHING		12-1/4"				NORMAL	8.4 - 9.5	FRESH	
1		RUSTLER 1430'	WASHOUTS IN SALT SECTION F/1400' - 2600'			8-5/8" 24#, K-55, ST&C 835 sx, circ cmt	1500'			10	BRINE	3
2		YATES 2716'										
3		SEVEN RIVERS 2974'			7-7/8"							
		QUEEN 3538' PENROSE 3680'		MUDLOGGERS ON @ 3500' H2S MONITOR ON @ 3500'								
4		GRAYBURG 3862' SAN ANDRES 4128'	POSSIBLE LOSSES AND SEEPAGE TO TOTAL DEPTH						LESS THAN 8.3			7
5		GLORIETA 5338'	CASES OF DIFFERENTI STICKING THROUGH GLORIETA									
6		BLINEBRY MKR. 5794' TUBB 6368' DRINKARD 6670'										
		TD @ 6700'		GR-CAL-DLL-MLL and FDC-CNL-PE-Spect GR 2700'-TD. Pull GR-CAL to surface casing. Only run SG across Blinebry-Tubb		5-1/2" 15.5#, K-55, LT&C 1240 sx, circ cmt	6700'		LESS THAN 8.3 BHP = 2650 psi	10	STARCH- GEL @ TD	17
7												
8												

DATE 30 JULY 1996

APPROVED Roger Williamson
DRILLING ENGINEER

Joe Miller
RESERVOIR ENGINEER

Well Name : Warren Unit #207

Location : 2630' FNL & 1330' FWL Sec 34, T-20S, R-38E, Lea County, New Mexico

Casing Program :

Surface 8 5/8" casing in 12 1/4" Hole at 1500 ft.

Production 5 1/2" casing in 7 7/8" Hole at 6700 ft.

Cementing Program :

Surface

Lead 610 sacks Class C Mixed at 12.7 ppg
Additives 35:65:6 (Poz:Cem:Gel) + 2% CACL2
+ 0.25 pps Cello-Flake

Tail 225 sacks Class C Mixed at 14.8 ppg
Additives 2% A-7P

Production

Lead 585 sacks Class C Mixed at 12 ppg
Additives 16% Gel + 3% Salt + 0.3% CD-32 + 0.3% SMS

Tail 655 sacks Class C Mixed at 14.8 ppg
Additives 1.1% FL-62 + 2% BA-90 + 3% Salt + 0.3% CD-32
+ 0.2% SMS

Free Water 0 % **Fluid Loss** 80 cc/30 min.

BOP SPECIFICATIONS

