

State of New Mexico
Energy, Minerals and Natural Resources

DISTRICT I

1625 N French Dr., Hobbs, NM 88240

DISTRICT II

811 South First, Artesia, NM 88210

DISTRICT III

1060 Rio Brazos Rd., Aztec, NM 87410

DISTRICT IV

2040 South Pacheco, Santa Fe, NM 87505

OIL CONSERVATION DIVISION

2040 South Pacheco
Santa Fe, NM 87505FORM C-103
Revised March 25, 1999

SUNDRY NOTICES AND REPORTS ON WELLS (DO NOT USE THIS FORM FOR PROPOSALS TO DRILL OR TO DEEPEN OR PLUG BACK TO A DIFFERENT RESERVOIR. USE "APPLICATION FOR PERMIT" (FORM C-101) FOR SUCH PROPOSALS.)		WELL API NO. 30-025-33706
1. Type of Well <input checked="" type="checkbox"/> OIL WELL <input type="checkbox"/> GAS WELL <input type="checkbox"/> OTHER		5. Indicate Type of Lease <input type="checkbox"/> STATE <input checked="" type="checkbox"/> FEE
2. Name of Operator Apache Corporation		6. State Oil & Gas Lease No.
3. Address of Operator 2000 Post Oak Blvd., Ste. 100, Houston, Texas 77056-4400		7. Lease Name or Unit Agreement Name PAYDAY
4. Well Location Unit Letter L : 1980' Feet From The S Line and 660' Feet From The W Line Section 24 Township 20S Range 38E NMPM LEA County		8. Well No. 1
10. Elevation (Show whether DF, RKB, RT, GR, etc.) 3570' GR		9. Pool name or Wildcat BLINEBRY / WARREN TUBB

11. Check Appropriate Box to Indicate Nature of Notice, Report, or Other Data

NOTICE OF INTENTION TO:

SUBSEQUENT REPORT OF:

- ☐ Perform Remedial Work ☐ Plug and Abandon
☐ Temporarily Abandon ☐ Change Plans
☐ Pull or Alter Casing
☒ Other **DOWNHOLE COMMINGLED PERMIT**

- ☐ Remedial Work ☐ Altering Casing
☐ Commence Drilling Operations ☐ Plug and Abandonment
☐ Casing Test and Cement Job
☐ Other

12. Describe proposed or completed operations. (Clearly state all pertinent details, and give pertinent dates, including estimated date of starting any proposed work). SEE RULE 1103. For Multiple Completions: Attach wellbore diagram of proposed completion or recompletion.

East APACHE PROPOSES TO DOWNHOLE COMMINGLED PRODUCTION FROM THE BLINEBRY OIL & GAS POOL (06660) AND THE WARREN TUBB POOL (87080) WHICH HAVE BEEN ESTABLISHED AS PRE-APPROVED POOLS BY THE NM OIL CONSERVATION DIVISION. *8/25/95*

TO SUPPORT THIS PROPOSAL WE ARE SUBMITTING THE FOLLOWING:

- 1) DIVISION ORDER NO. **R-11363**
 2) BLINEBRY PERFORATIONS: **5982' - 6100' CODE #06660**
 WARREN TUBB PERFORATIONS: **6488' - 6814' CODE #87080**
 3) ALLOCATION FORMULA IS BASED ON CURRENT BLINEBRY & TUBB PRODUCTION
East BLINEBRY ALLOCATION: **14 BOPD x 85 MCPD 71% OIL x 75% GAS**
 WARREN TUBB ALLOCATION: **9 BOPD x 25 MCPD 29% OIL x 25% GAS**
 4) COMMINGLING OF THE PRODUCTION FROM EACH POOL WILL NOT REDUCE THE VALUE OF THE TOTAL REMAINING PRODUCTION.
 5) THE OWNERSHIP & PERCENTAGES BETWEEN THE POOLS TO BE COMMINGLED ARE IDENTICAL.

I hereby certify that the information above is true and complete to the best of my knowledge and belief.

SIGNATURE

Francis M. Byers
FRANCES M. BYERS

TITLE

SR. ENGINEERING TECH

DATE

8/25/2000

TYPE OR PRINT NAME

TELEPHONE NO.

(713) 296-6361

(This space for State Use)

APPROVED BY

TITLE

DATE

CONDITIONS OF APPROVAL, IF ANY:

District I
1625 N. French Drive, Hobbs, NM 88240

District II
P.O. Drawer DD, Artesia, NM 88210

District III
1000 Rio Brazos Rd., Aztec, NM 87410

District IV
2040 South Pacheco, Santa Fe, NM 87505

State of New Mexico
Energy, Minerals and Natural Resources Department

OIL CONSERVATION DIVISION

2040 S. Pacheco
Santa Fe, New Mexico 87505

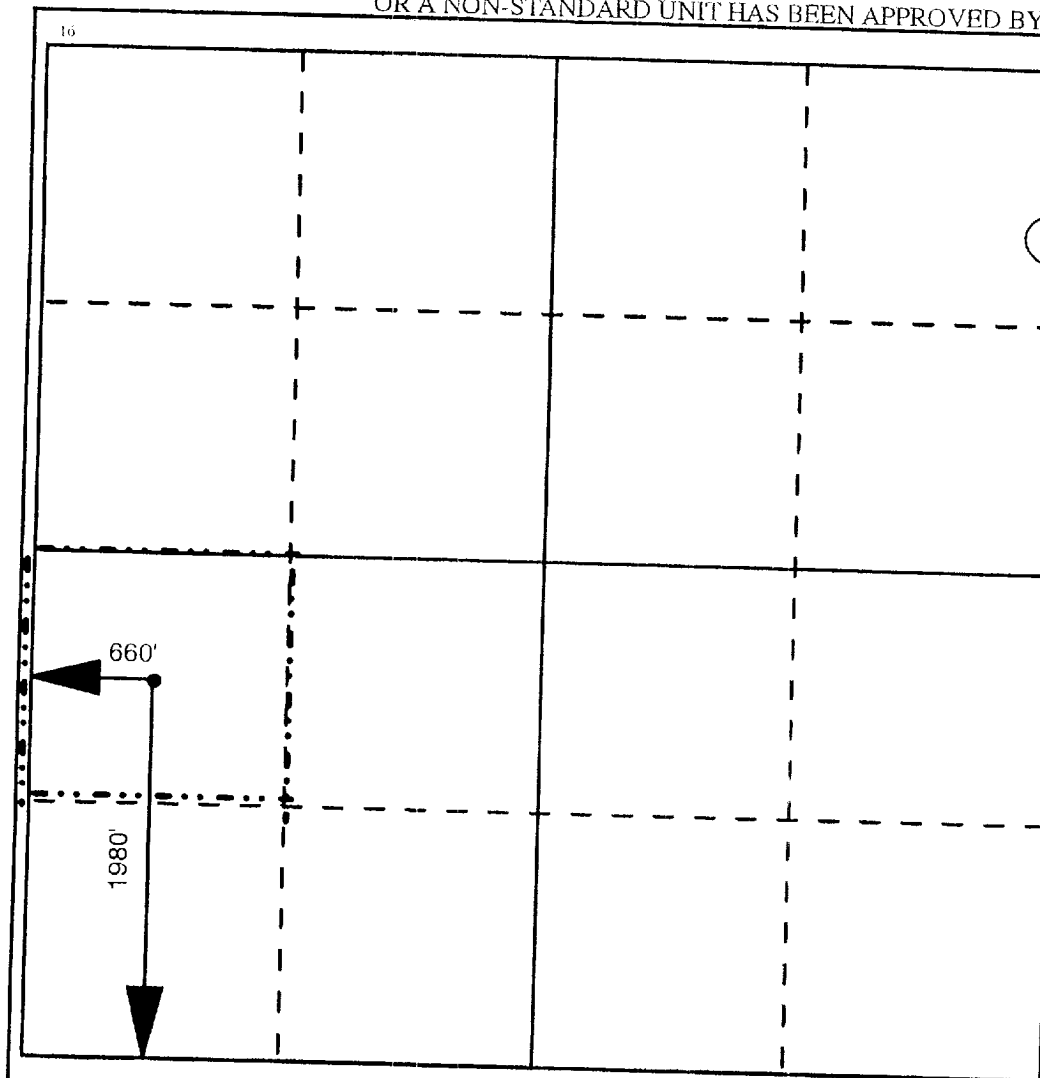
Form C-10
Revised October 18, 1999
Instruction on Back
Submit to Appropriate District Office
State Lease - 4 Copies
Fee Lease - 3 Copies

☐ AMENDED REPORT

WELL LOCATION AND ACREAGE DEDICATION PLAT


¹ API Number 30-025-33706		² Pool Code 06660		³ Pool Name Blinebry Oil & Gas					
⁴ Property Code 20034		⁵ Property Name Payday						⁶ Well Number 1	
⁷ OGRID No. 004874		⁸ Operator Name Apache Corporation						⁹ Elevation 3570'	
¹⁰ Surface Location									
UL or Lot No. L	Section 24	Township 20S	Range 38E	Lot Idn	Feet from the 1980'	North/South line South	Feet from the 660'	East/West line West	County Lea
¹¹ Bottom Hole Location If Different From Surface									
UL or Lot No.	Section	Township	Range	Lot Idn	Feet from the	North/South line	Feet from the	East/West line	County
¹² Dedicated Acres 40		¹³ Joint or Infill		¹⁴ Consolidation Code		¹⁵ Order No.			

NO ALLOWABLE WILL BE ASSIGNED TO THIS COMPLETION UNTIL ALL INTERESTS HAVE BEEN CONSOLIDATED
OR A NON-STANDARD UNIT HAS BEEN APPROVED BY THE DIVISION



17 OPERATOR CERTIFICATION

I hereby certify that the information contained herein is true and complete to the best of my knowledge and belief.


Signature

Printed Name
Frances M. Byers

Title
Sr. Engineering Technician

Date
8/25/00

18 SURVEYOR CERTIFICATION

I hereby certify that the well location shown on this plat was plotted from field notes of actual surveys made by me or under my supervision, and that the same is true and correct to the best of my belief.

Date Surveyed

Signature and Seal of Professional Surveyor

Certificate Number

District I
1625 N. French Drive, Hobbs, NM 88240

District II
P O Drawer DD, Artesia, NM 88210

District III
1000 Rio Brazos Rd., Aztec, NM 87410

District IV
2040 South Pacheco, Santa Fe, NM 87505

State of New Mexico
Energy, Minerals and Natural Resources Department

OIL CONSERVATION DIVISION

2040 S. Pacheco
Santa Fe, New Mexico 87505

Form C-10
Revised October 18, 1999
Instruction on Back
Submit to Appropriate District Office
State Lease - 4 Copies
Fee Lease - 3 Copies

☐ AMENDED REPORT

WELL LOCATION AND ACREAGE DEDICATION PLAT

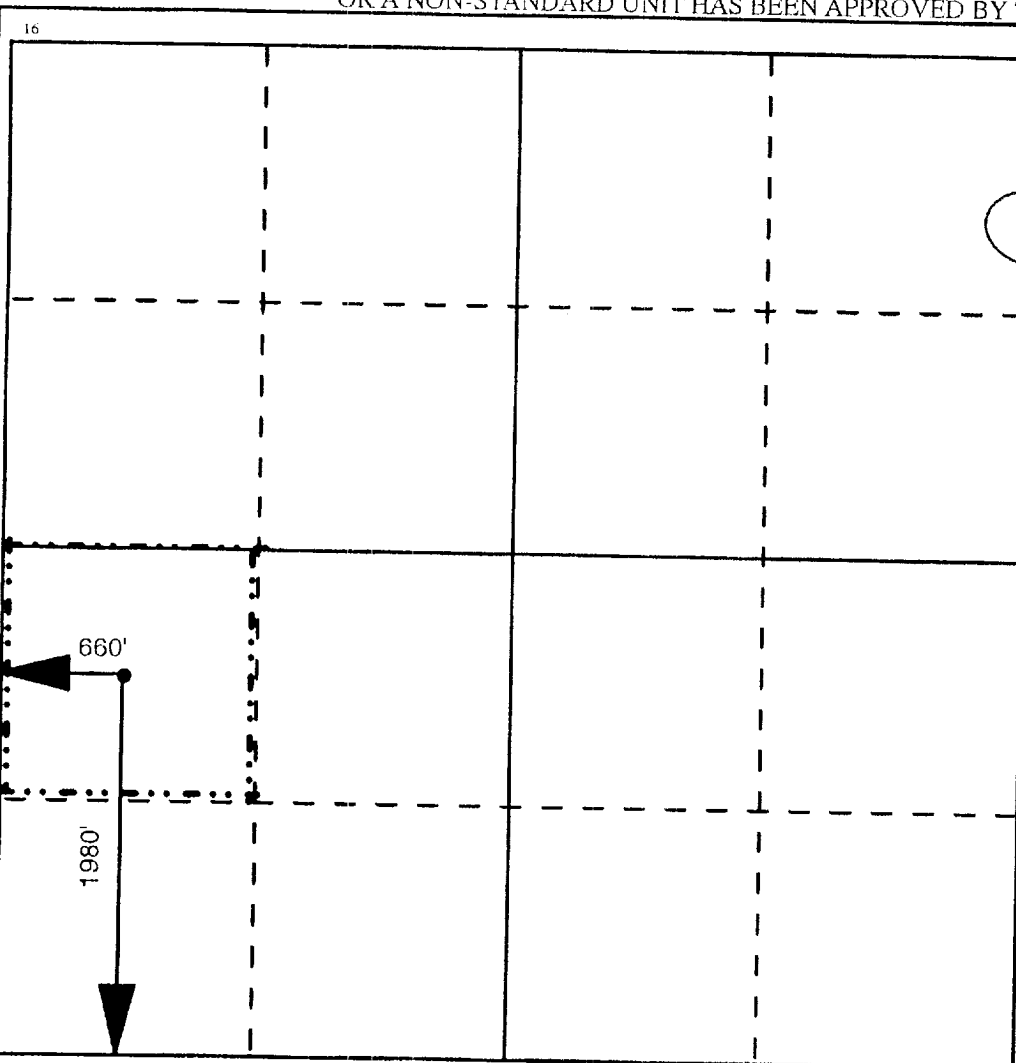
¹ API Number 30-025-33706	² Pool Code 87080-3-LS5	³ Pool Name East Warren Tubb
⁴ Property Code 20034	⁵ Property Name Payday	⁶ Well Number 1
⁷ OGRID No. 004874	⁸ Operator Name Apache Corporation	⁹ Elevation 3570'

¹⁰ Surface Location									
UL or Lot No. L	Section 24	Township 20S	Range 38E	Lot Idn	Feet from the 1980'	North/South line South	Feet from the 660'	East/West line West	County Lea

¹¹ Bottom Hole Location If Different From Surface									
UL or Lot No.	Section	Township	Range	Lot Idn	Feet from the	North/South line	Feet from the	East/West line	County

¹² Dedicated Acres 40	¹³ Joint or Infill	¹⁴ Consolidation Code	¹⁵ Order No.
-------------------------------------	-------------------------------	----------------------------------	-------------------------

NO ALLOWABLE WILL BE ASSIGNED TO THIS COMPLETION UNTIL ALL INTERESTS HAVE BEEN CONSOLIDATED
OR A NON-STANDARD UNIT HAS BEEN APPROVED BY THE DIVISION



¹⁷ OPERATOR CERTIFICATION

I hereby certify that the information contained herein is true and complete to the best of my knowledge and belief.

Signature

Printed Name

Frances M. Byers

Title

Sr. Engineering Technician

Date

8/25/00

¹⁸ SURVEYOR CERTIFICATION

I hereby certify that the well location shown on this plat was plotted from field notes of actual surveys made by me or under my supervision, and that the same is true and correct to the best of my belief.

Date Surveyed

Signature and Seal of Professional Surveyor

Certificate Number